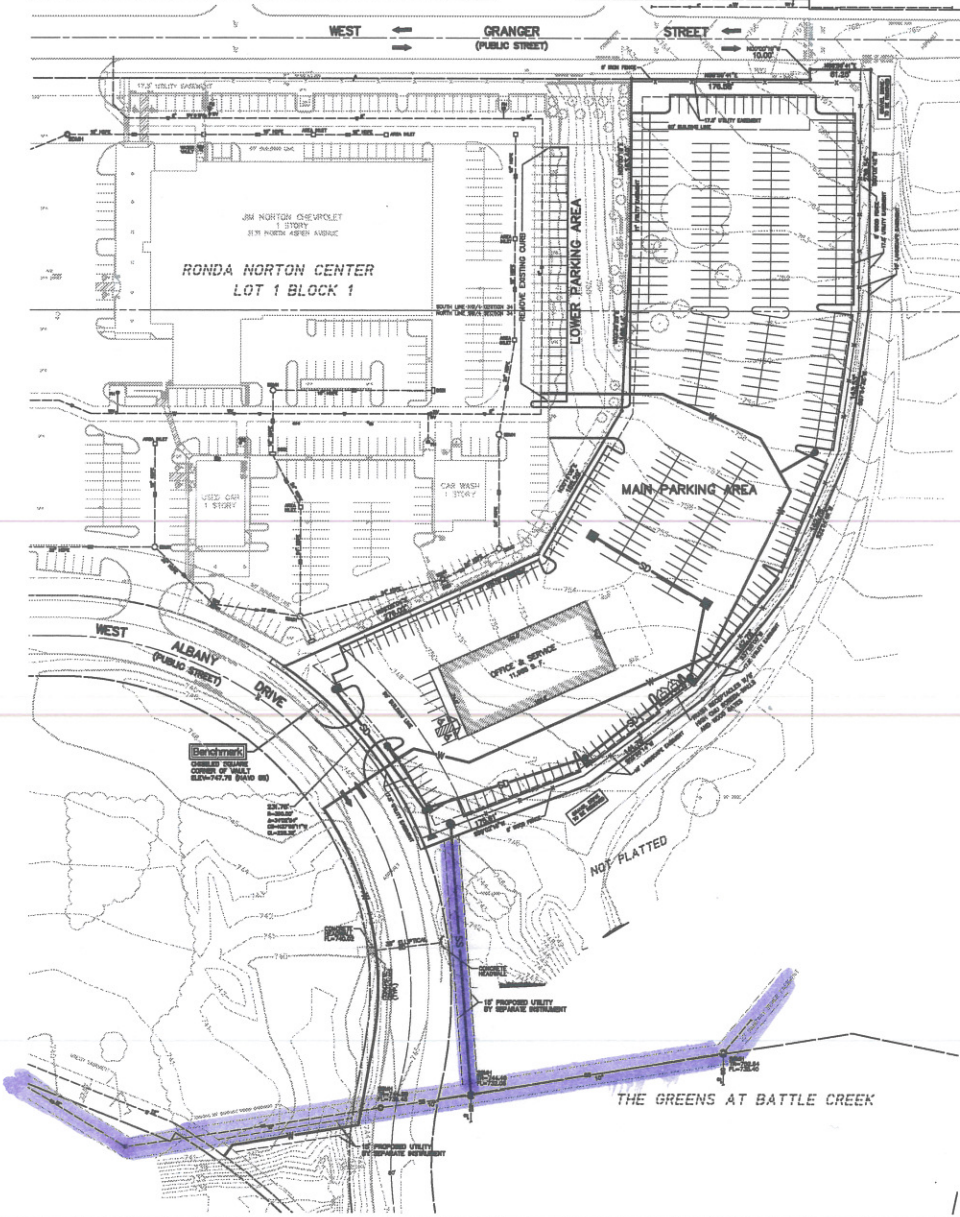


Copyright © 1999-2017 Sack and Associates, Inc.

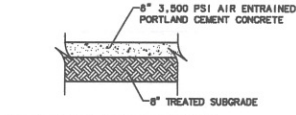
### THE CHURCH AT BATTLE CREEK (LOT 1 BLOCK 1, OUTLET MALL)



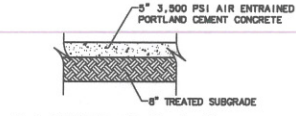
**Owner**  
 TAHOE PROPERTIES LLC  
 ATTN: JAMES C. NORTON  
 9909 SOUTH MEMORIAL DRIVE  
 TULSA, OKLAHOMA 74133  
 PHONE: (918) 250-6888

#### Legend

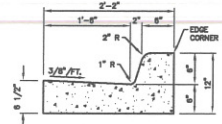
- FH EXISTING FIRE HYDRANT
- W --- EXISTING WATERLINE
- SS --- EXISTING SANITARY SEWER
- SD --- EXISTING STORM SEWER
- OE --- EXISTING OVERHEAD POWER
- UE --- EXISTING UNDERGROUND POWER
- SD --- PROPOSED STORM SEWER
- SS --- PROPOSED 6" SANITARY SEWER LINE
- W --- PROPOSED 6" WATERLINE
- ← PROPOSED DRAINAGE FLOW



Typical Heavy Duty Paving Section  
NOT TO SCALE



Typical Light Duty Paving Section  
NOT TO SCALE



6" Barrier Curb and Gutter  
NOT TO SCALE

### JIM NORTON CHEVROLET EXPANSION RONDA NORTON CENTER II

#### CONCEPTUAL IMPROVEMENTS PLAN

9/28/17

#### CITY OF BROKEN ARROW

**SACK AND ASSOCIATES, INC.**  
 7401 WEST 21<sup>ST</sup> TULSA, OKLAHOMA 74116  
 (918) 438-2211 FAX (918) 438-2212 www.sackandassociates.com  
 (A Division of S&A Group, Inc. and S&A Group, Inc.)



THIS DOCUMENT IS PRELIMINARY  
 IN NATURE AND SHOULD BE  
 REVIEWED AND SEALED  
 ERIC C. SACK  
 20008  
 OKLAHOMA

REVISION	BY	DATE	FILE SCALE	DATE	APPROVED
1"	BT		DATE: 9/14/2017		
1"			ORDER: 0313A		
1"			SM FILE: 1914-34		
1"			RECOMMENDED		
1"			DEVELOPMENT SERVICES		
1"			RECOMMENDED		
1"			ENGINEERING SERVICES		
FILE	DRAWING	DATE			PUBLIC WORKS DIRECTOR
ATLAS PAGE NO.					SHEET 1 OF 1 SHEETS



Project: ALABAMA AND MISSISSIPPI RIVER REGION  
 Printed: JULY 07, 2017 AT 1:43 PM  
 2017 © SACK AND ASSOCIATES, INC.