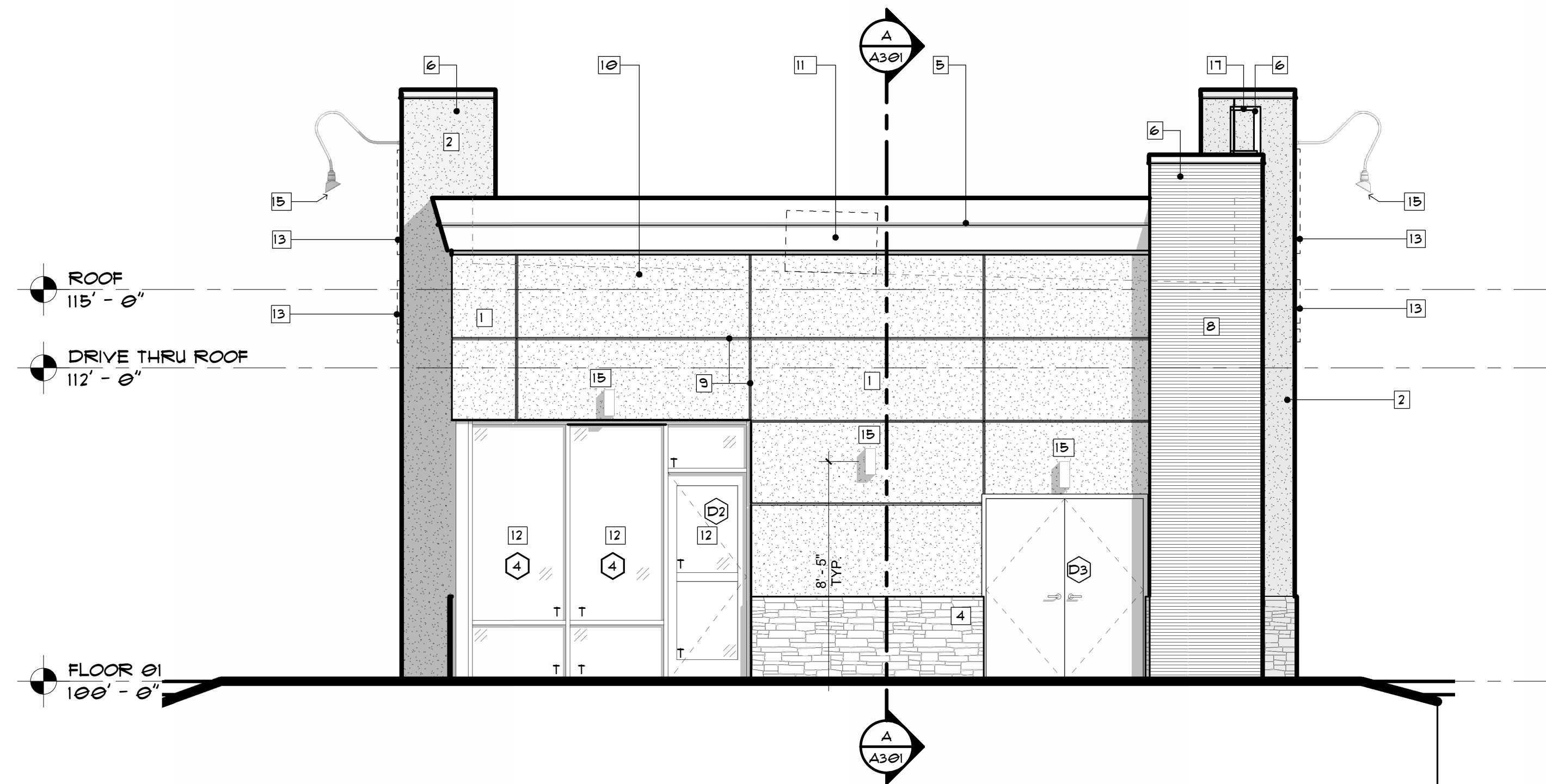


**EXTERIOR ELEVATION NOTES**

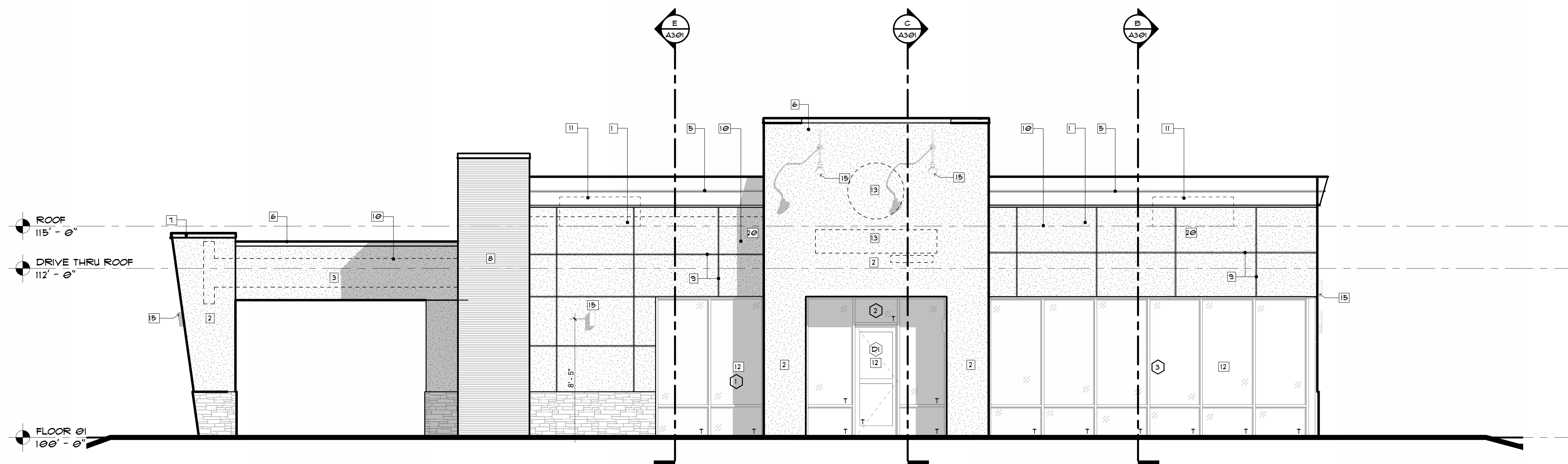
1. EIFS STUCCO VENEER SYSTEM PAREX OR DRYVIT EQUAL TO BE ACCENT COLOR 2-MATCH SHERWIN WILLIAMS, SW 1521, HEADOLARK
2. EIFS STUCCO VENEER SYSTEM PAREX OR DRYVIT EQUAL TO BE ACCENT COLOR 1-MATCH SHERWIN WILLIAMS, SW 9183, DARK CLOVE
3. EIFS STUCCO VENEER SYSTEM PAREX OR DRYVIT EQUAL TO BE FIELD COLOR-MATCH SHERWIN WILLIAMS, SW 1559, PATIENCE
4. STONE VENEER AS INDICATED. PROVIDE PRE-MANUFACTURED CORNER STONES AT ALL OUTSIDE CORNERS. FOR WAINSCOT, PROVIDE PRECAST WATER TABLE INSTALLED TO A TOTAL HEIGHT OF 3" - 3" A.F.F. AS SCHEDULED. STONE VENEER TO BE EL DORADO MOUNTAIN LEDGE, YUKON
5. METAL PARAPET CAP WITH 4" RETURN AT BACK SIDE OF WALL AND 2" - 0" CUSTOM PROFILE RETURN AT FRONT SIDE OF WALL. COLOR TO BE PAC CLAD, SLATE GREY. TYPICAL AT BUILDING PARAPET WALLS
6. PRE-FINISHED METAL PARAPET CAP WITH 4" RETURN BOTH SIDES OF WALL. TYPICAL AT CANOPY PARAPET WALLS AND SIGNAGE PARAPET. COLOR: PRE-FINISHED TO MATCH ADJACENT EIFS FINISH COLOR AT WALL BELOW. AT LOCATIONS ADJACENT GALVANIZED METAL PANELS, COLOR TO MATCH PAC CLAD, SLATE GREY FINISH
7. METAL PARAPET CAP WITH 4" RETURN ALL SIDES. SLOPES TO DRAIN FROM A HIGH POINT IN THE CENTER OF THE CAP. COLOR: PRE-FINISHED TO MATCH ADJACENT EIFS FINISH COLOR AT WALL BELOW
8. PRE-FINISHED METAL WALL PANELS: GALVANIZED CORRUGATED METAL PANEL(S) AND ASSOCIATED 18" x 14" x 1/4" CORRUGATED METAL PANEL(S). INSTALL HORIZONTALLY AS INDICATED
9. CONTROL JOINT INSET INTO EIFS AS SHOWN
10. LINE OF SINGLE-PLY MEMBRANE ROOFING OVER TAPERED INSULATION BEYOND
11. ROOFTOP UNIT WITH CURB BEYOND SEE MECHANICAL
12. NEW ALUMINUM STOREFRONT GLAZING SYSTEM WITH INTEGRAL DOOR(S) AS SCHEDULED
13. APPROX. LOCATION FOR BUILDING SIGNAGE BY OTHERS. SIGNAGE TO BE SUBMITTED UNDER A SEPARATE PERMIT. IN-WALL BLOCKING AND POWER FOR SIGNAGE TO BE FURNISHED AND INSTALLED BY GENERAL CONTRACTOR. COORDINATE FINAL LOCATION(S) FOR BLOCKING AND POWER AS REQUIRED WITH SIGN VENDOR
14. PRE-MANUFACTURED COMBINATION SERVICE WINDOW AND DOOR WITH SEPARATE OPERABLE UPPER AND LOWER SLIDING PANELS AS SCHEDULED. CALK JOINT AT CONNECTION TO BUILDING AND EXTERIOR FINISH MATERIALS AS REQUIRED
15. LOCATION FOR EXTERIOR BUILDING LIGHT FIXTURE AS SCHEDULED. LIGHT FIXTURE TO BE CENTERED BETWEEN EIFS JOINTS
16. METAL DOORS AS SCHEDULED. PAINT SHERWIN WILLIAMS, SW 9183, DARK CLOVE
17. METAL ROOF ACCESS LADDER. LADDER SIZING CONSTRUCTION AND RUNG SPACING TO COMPLY WITH APPLICABLE REQUIREMENTS OF IMC. SECURE LADDER TO BUILDING AS REQUIRED. LOCATE BOTTOM OF LADDER AT 8" - 0" ABOVE GRADE. EXTEND SIDE RAILS TO 36" ABOVE TOP OF PARAPET WALL AND TIE CONTINUOUSLY INTO SIDE RAILS OF RETURN LADDER AT BACK SIDE OF PARAPET WALL. PAINT SHERWIN WILLIAMS, SW 9183, DARK CLOVE
18. 4" x 14" STEEL SCUPPER TO ACT AS PRIMARY ROOF DRAIN. SCUPPER TO DRAIN TO GALVANIZED METAL DOWNSPOUT TO DAYLIGHT AT DRIVE AISLE BELOW
19. APPROX. LOCATION FOR ELECTRICAL/PLUMBING EQUIPMENT. SEE ENGINEERING DRAWINGS. PAINT TO MATCH ADJACENT WALL FINISHES. AT LOCATIONS ADJACENT WOOD VENEER AND/OR STONE VENEER, COLOR TO MATCH SHERWIN WILLIAMS, SW 9183, DARK CLOVE
20. LOCATION FOR NEW EXTERIOR WALL-MOUNTED SPEAKER
21. PRE-FINISHED GALVANIZED METAL DOWNSPOUT. COLOR: PRE-FINISHED TO MATCH ADJACENT EIFS FINISH COLOR. WHEN PLACED AGAINST STONE OR WOOD SIDING, COLOR TO MATCH SHERWIN WILLIAMS, SW 9183, DARK CLOVE. PROVIDE CONCRETE SPLASH BLOCK AT LANDSCAPE LOCATIONS
22. 4" x 14" STEEL SCUPPER TO ACT AS SECONDARY ROOF DRAIN
23. NEW ALUMINUM OVERHEAD ROLL-UP DOOR W/ TEMP. GLASS INSERTS AND TRACK AS SCHEDULED

**EXTERIOR MATERIAL LEGEND**

| EXTERIOR FINISHES (NOTE)                          | SQUARE FOOTAGES |      |       |      | PERCENTAGE  | MATERIAL TOTAL PERCENTAGE |
|---|-----------------|------|-------|------|-------------|---------------------------|
|   | SOUTH           | EAST | NORTH | WEST |             |                           |
| <b>DRAINABLE EXTERIOR INSULATED FINISH SYSTEM</b> |                 |      |       |      |             |                           |
| EIFS FIELD (1)                                    | 192             | 541  | 248   | 328  | 1309        | 31.99%                    |
| EIFS ACCENT (2)                                   | 200             | 353  | 18.5  | 305  | 957         | 22.90%                    |
| EIFS CANOPY (3)                                   | 109             | 689  | -     | 66   | 206         | 5.03%                     |
| <b>STONE VENEER</b>                               |                 |      |       |      |             |                           |
| STONE (4)   | 911             | 202  | 33.9  | 46.3 | 373         | 9.12%                     |
| <b>METAL PARAPET CAP</b>                          |                 |      |       |      |             |                           |
| DECORATIVE METAL CAP (5)                          | 55.8            | 81.5 | 51.2  | 86.1 | 287         | 7.02%                     |
| <b>METAL WALL PANELS</b>                          |                 |      |       |      |             |                           |
| METAL PANEL (6)                                   | 103             | 103  | 81.4  | 103  | 395         | 9.67%                     |
| <b>STOREFRONT</b>                                 |                 |      |       |      |             |                           |
| STOREFRONT (12)                                   | 14.4            | -    | 114   | 410  | 539         | 13.17%                    |
| <b>HM DOORS</b>                                   |                 |      |       |      |             |                           |
| HM DOORS (16)                                     | -               | -    | 45.1  | -    | 45.1        | 1.10%                     |
| <b>TOTAL</b>                                      |                 |      |       |      | <b>4091</b> | <b>100.00%</b>            |



**B NORTH ELEVATION**  
1/4" = 1'-0"



**A WEST ELEVATION**  
1/4" = 1'-0"

**INTERIM REVIEW ONLY**

THESE DOCUMENTS ARE INCOMPLETE. THEY ARE NOT INTENDED TO BE USED FOR PERMIT, BIDDING, OR CONSTRUCTION.  
2/13/2025 3:00:48 PM

**ZIGGI'S COFFEE BA**  
NORTH 23RD STREET & EAST ALBANY

**A201**  
EXTERIOR ELEVATIONS

**GH2 ARCHITECTS**

GH2.COM

GH2 PROJECT NUMBER:

**20240170**

ISSUE DATE:

**12/06/2024**

ISSUE:

**BID SET**

OTHER ISSUE DATES:

| NO. | DESCRIPTION  | DATE       |
|-----|--------------|------------|
| 1   | Addendum #01 | 01/17/2025 |

SHEET NAME:

**EXTERIOR ELEVATIONS**

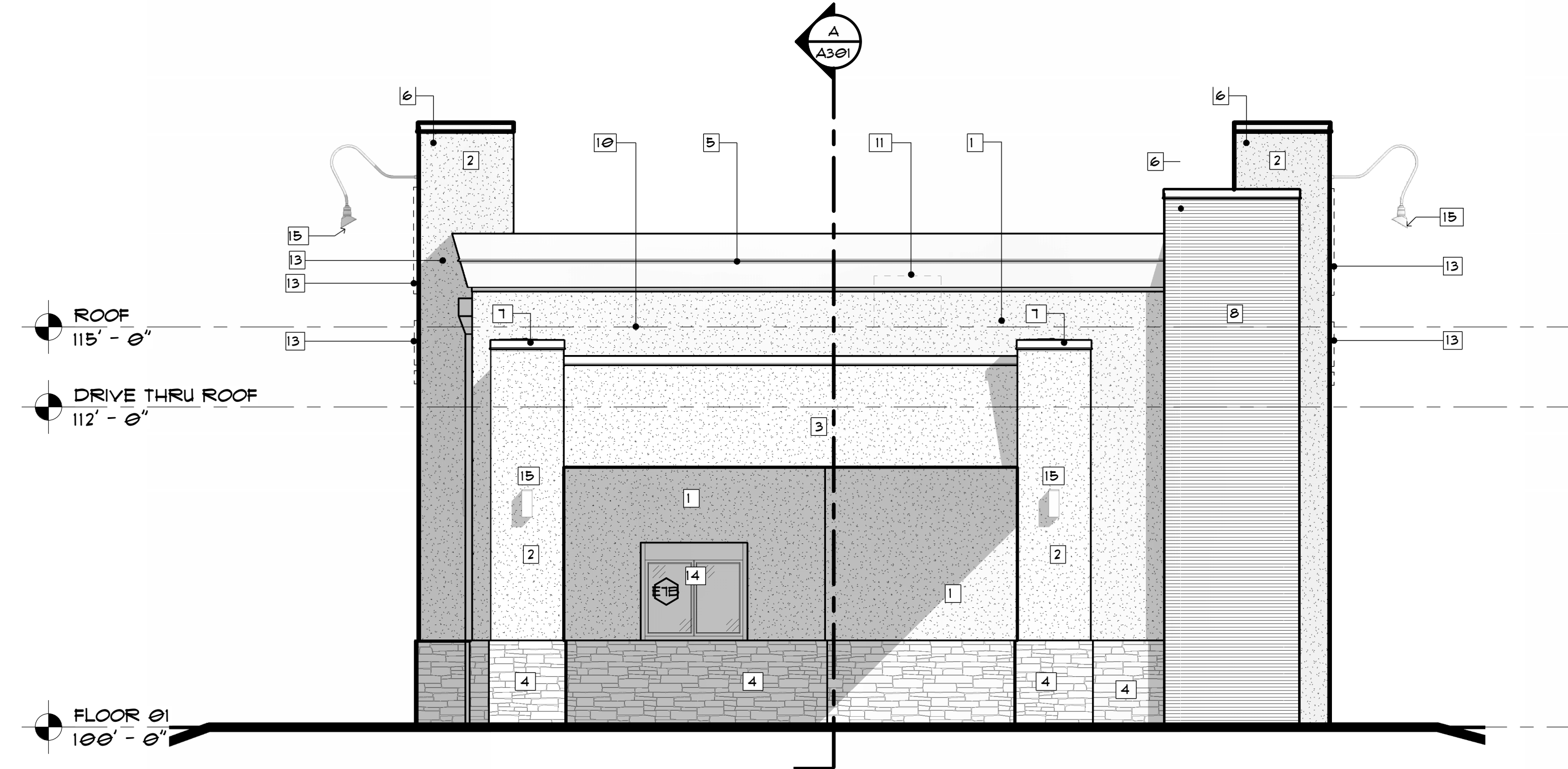
SHEET NUMBER:

**A201**

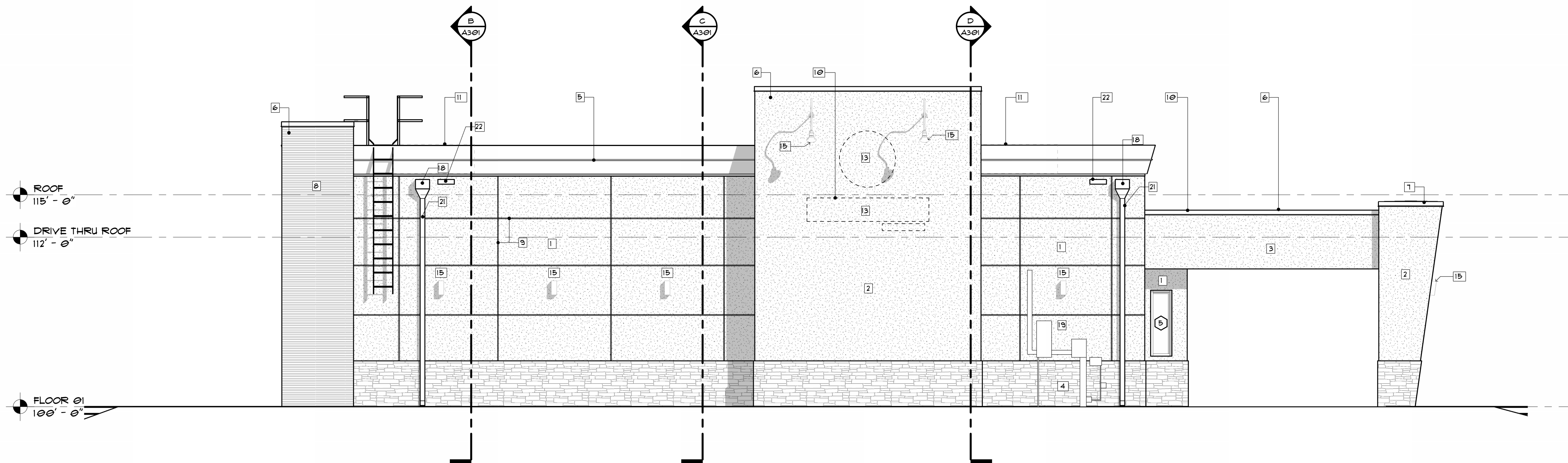
© 2024 COPYRIGHT GH2 ARCHITECTS, LLC

**EXTERIOR ELEVATION NOTES**

1. EIFS STUCCO VENEER SYSTEM FAREX OR DRYVIT EQUAL TO BE ACCENT COLOR 2-MATCH SHERWIN WILLIAMS, SW 1522, MEADOWLARK.
2. EIFS STUCCO VENEER SYSTEM FAREX OR DRYVIT EQUAL TO BE ACCENT COLOR 1-MATCH SHERWIN WILLIAMS, SW 9183, DARK CLOVE.
3. EIFS STUCCO VENEER SYSTEM FAREX OR DRYVIT EQUAL TO BE FIELD COLOR-MATCH SHERWIN WILLIAMS, SW 1535, PATIENCE.
4. STONE VENEER AS INDICATED. PROVIDE PRE-MANUFACTURED CORNER STONES AT ALL OUTSIDE CORNERS. FOR WANSCOT, PROVIDE PRECAST WATER TABLE INSTALLED TO A TOTAL HEIGHT OF 3" - 3" A.F.F. AS SCHEDULED. STONE VENEER TO BE ELKORADO MOUNTAIN LEDGE, YUKON.
5. METAL PARAPET CAP WITH 4" RETURN AT BACK SIDE OF WALL AND 2" - 0" CUSTOM PROFILE RETURN AT FRONT SIDE OF WALL. COLOR TO BE PAC CLAD, SLATE GREY. TYPICAL AT BUILDING PARAPET WALLS.
6. PRE-FINISHED METAL PARAPET CAP WITH 4" RETURN BOTH SIDES OF WALL. TYPICAL AT CANOPY PARAPET WALLS AND SIGNAGE PARAPET. COLOR: PRE-FINISHED TO MATCH ADJACENT EIFS FINISH COLOR AT WALL BELOW. AT LOCATIONS ADJACENT GALVANIZED METAL PANELS, COLOR TO MATCH PAC CLAD, SLATE GREY FINISH.
7. METAL PARAPET CAP WITH 4" RETURN ALL SIDES. SLOPES TO DRAIN FROM A HIGH POINT IN THE CENTER OF THE CAP. COLOR: PRE-FINISHED TO MATCH ADJACENT EIFS FINISH COLOR AT WALL BELOW.
8. PRE-FINISHED METAL WALL PANELS: GALVANIZED CORRUGATED METAL PANEL(S) AND ASSOCIATED TRIM 1/4" X 1/4" CORRUGATED METAL PANEL(S). INSTALL HORIZONTALLY AS INDICATED.
9. CONTROL JOINT INSET INTO EIFS AS SHOWN.
10. LINE OF SINGLE-PLY MEMBRANE ROOFING OVER TAPERED INSULATION BEYOND.
11. ROOFTOP UNIT WITH CURB BEYOND SEE MECHANICAL.
12. NEW ALUMINUM STOREFRONT GLAZING SYSTEM WITH INTEGRAL DOOR(S) AS SCHEDULED.
13. APPROX. LOCATION FOR BUILDING SIGNAGE BY OTHERS. SIGNAGE TO BE SUBMITTED UNDER A SEPARATE PERMIT. IN-WALL BLOCKING AND POWER FOR SIGNAGE TO BE FURNISHED AND INSTALLED BY GENERAL CONTRACTOR. COORDINATE FINAL LOCATION(S) FOR BLOCKING AND POWER AS REQUIRED WITH SIGN VENDOR.
14. PRE-MANUFACTURED COMBINATION SERVICE WINDOW AND DOOR WITH SEPARATE OPERABLE UPPER AND LOWER SLIDING PANELS AS SCHEDULED. CALK JOINT AT CONNECTION TO BUILDING AND EXTERIOR FINISH MATERIALS AS REQUIRED.
15. LOCATION FOR EXTERIOR BUILDING LIGHT FIXTURE AS SCHEDULED. LIGHT FIXTURE TO BE CENTERED BETWEEN EIFS JOINTS.
16. METAL DOORS AS SCHEDULED. PAINT SHERWIN WILLIAMS, SW 9183, DARK CLOVE.
17. METAL ROOF ACCESS LADDER. LADDER SIZING CONSTRUCTION, AND RUNG SPACING TO COMPLY WITH APPLICABLE REQUIREMENTS OF IBC. SECURE LADDER TO BUILDING AS REQUIRED. LOCATE BOTTOM OF LADDER AT 8" - 0" ABOVE GRADE. EXTEND SIDE RAILS TO 36" ABOVE TOP OF PARAPET WALL AND BE CONTINUOUSLY INTO SIDE RAILS OF RETURN LADDER AT BACK SIDE OF PARAPET WALL. PAINT SHERWIN WILLIAMS, SW 9183, DARK CLOVE.
18. 4" X 14" STEEL SCUPPER TO ACT AS PRIMARY ROOF DRAIN. SCUPPER TO DRAIN TO GALVANIZED METAL DOWNSPOUT TO DAYLIGHT AT DRIVE AISLE BELOW.
19. APPROX. LOCATION FOR ELECTRICAL/PLUMBING EQUIPMENT. SEE ENGINEERING DRAWINGS. PAINT TO MATCH ADJACENT WALL FINISHES. AT LOCATIONS ADJACENT WOOD VENEER AND/OR STONE VENEER, COLOR TO MATCH SHERWIN WILLIAMS, SW 9183, DARK CLOVE.
20. LOCATION FOR NEW EXTERIOR WALL-MOUNTED SPEAKER.
21. PRE-FINISHED GALVANIZED METAL DOWNSPOUT. COLOR: PRE-FINISHED TO MATCH ADJACENT EIFS FINISH COLOR WHEN PLACED AGAINST STONE OR WOOD SIDING, COLOR TO MATCH SHERWIN WILLIAMS, SW 9183, DARK CLOVE. PROVIDE CONCRETE SPLASH BLOCK AT LANDSCAPE LOCATIONS.
22. 4" X 14" STEEL SCUPPER TO ACT AS SECONDARY ROOF DRAIN.
23. NEW ALUMINUM OVERHEAD ROLL-UP DOOR W/ TEMP. GLASS INSERTS AND TRACK AS SCHEDULED.



**B SOUTH ELEVATION**  
1/4" = 1'-0"



**A EAST ELEVATION**  
1/4" = 1'-0"

| EXTERIOR FINISHES (NOTE)                          | SQUARE FOOTAGES |      |       |      |             | PERCENTAGE | MATERIAL TOTAL PERCENTAGE |
|---|-----------------|------|-------|------|-------------|------------|---------------------------|
|   | SOUTH           | EAST | NORTH | WEST | TOTAL       |            |                           |
| <b>DRAINABLE EXTERIOR INSULATED FINISH SYSTEM</b> |                 |      |       |      |             |            |                           |
| EIFS FIELD (1)                                    | 192             | 541  | 248   | 328  | 1309        | 31.99%     | 59.92%                    |
| EIFS ACCENT (2)                                   | 200             | 353  | 10.5  | 305  | 931         | 22.90%     |                           |
| EIFS CANOPY (3)                                   | 103             | 68.3 | -     | 66   | 236         | 5.83%      |                           |
| <b>STONE VENEER</b>                               |                 |      |       |      |             |            |                           |
| STONE (4)   | 91.1            | 202  | 33.3  | 46.3 | 373         | 9.12%      | 9.12%                     |
| <b>METAL PARAPET CAP</b>                          |                 |      |       |      |             |            |                           |
| DECORATIVE METAL CAP (5)                          | 55.8            | 81.5 | 51.2  | 86.1 | 274         | 7.02%      | 7.02%                     |
| <b>METAL WALL PANELS</b>                          |                 |      |       |      |             |            |                           |
| METAL PANEL (6)                                   | 103             | 103  | 81.4  | 103  | 390         | 9.61%      | 9.61%                     |
| <b>STOREFRONT</b>                                 |                 |      |       |      |             |            |                           |
| STOREFRONT (12)                                   | 14.4            | -    | 11.4  | 410  | 535         | 13.17%     | 13.17%                    |
| <b>HM DOORS</b>                                   |                 |      |       |      |             |            |                           |
| HM DOORS (16)                                     | -               | -    | 45.1  | -    | 45.1        | 1.10%      | 1.10%                     |
| <b>TOTAL</b>                                      |                 |      |       |      | <b>4091</b> |            | <b>100.00%</b>            |

**INTERIM REVIEW ONLY**

THESE DOCUMENTS ARE INCOMPLETE. THEY ARE NOT INTENDED TO BE USED FOR PERMIT, BIDDING, OR CONSTRUCTION.  
2/13/2025 3:00:52 PM

**GH2 ARCHITECTS**  
GH2.COM

GH2 PROJECT NUMBER:  
**20240170**  
ISSUE DATE:  
**12/06/2024**  
ISSUE:  
**BID SET**

| NO. | DESCRIPTION  | DATE       |
|-----|--------------|------------|
| 1   | Addendum #01 | 01/17/2025 |

SHEET NAME:  
**EXTERIOR ELEVATIONS**

SHEET NUMBER:  
**A202**