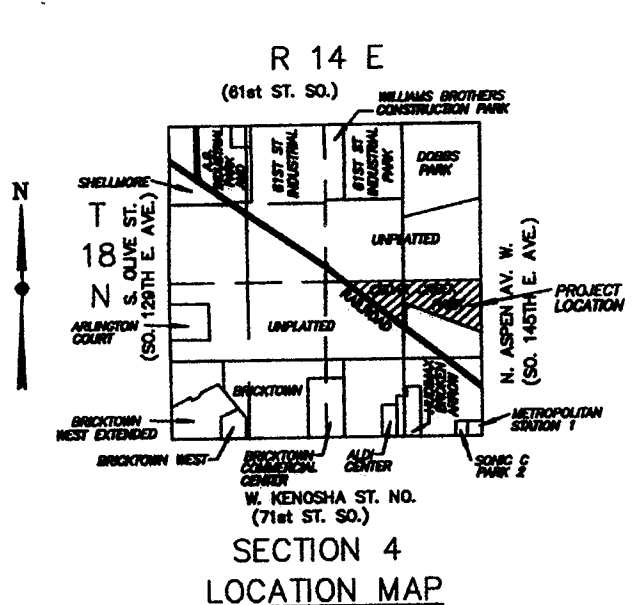
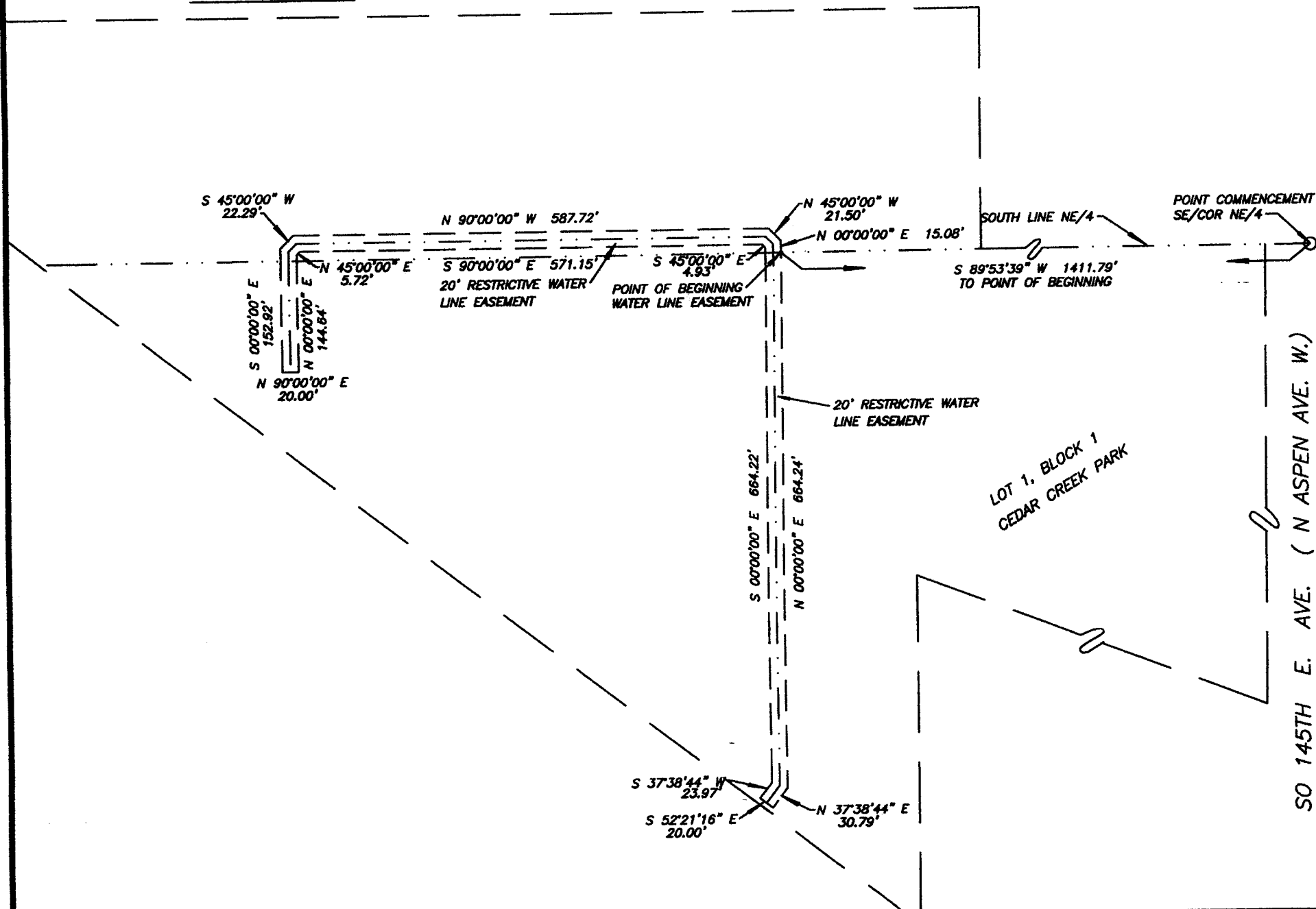


# EASEMENT EXHIBIT 'B'



OWNER:  
 MULTI-STATE HOLDINGS, LLC  
 3730 TERWILLGER  
 TULSA, OKLAHOMA 74105  
 MANAGING PARTNER:  
 CLARK WIENS

BUSINESS:  
 CEDAR CREEK  
 6500 S. 145TH E. AVE.  
 BROKEN ARROW, OK. 74012  
 CONTACT PERSON: KEMP MILLER  
 918-258-9688



## LEGAL DESCRIPTION

### PROPERTY DESCRIPTION

CEDAR CREEK PARK, LOT 1, BLOCK 1, A SUBDIVISION IN THE NORTH HALF OF THE SOUTHEAST QUARTER (N2,SE/4) OF SECTION 4, T-18-N, R-14-E OF THE INDIAN BASE AND MERIDIAN, CITY OF BROKEN ARROW, TULSA COUNTY, OKLAHOMA, AND THE SOUTH 300 FEET OF THE NORTHEAST QUARTER, LESS THE EAST 1240 FEET THEREOF, LYING IN THE SOUTH HALF OF THE NORTHEAST QUARTER (S/2, NE/4), IN SECTION 4, T-18-N, R-14-E, CITY OF BROKEN ARROW, OKLAHOMA.

### DESCRIPTION OF 20' RESTRICTIVE WATER LINE EASEMENT

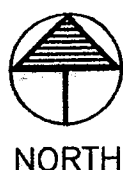
A 20 FOOT WIDE RESTRICTIVE WATER LINE EASEMENT, DESCRIBED BY METES AND BOUNDS, AS FOLLOWS, TO-WIT: COMMENCING AT THE SOUTHEAST CORNER OF THE NORTHEAST QUARTER OF SECTION 4, T-18-N, R-14-E; THENCE N 89°53'39\" W AND ALONG THE SOUTH LINE OF THE NORTHEAST QUARTER (NE/4) OF THE NORTHEAST QUARTER OF SECTION 4, T-18-N, R-14-E; THENCE N 00°00'00\" E, A DISTANCE OF 15.08 FEET; THENCE N 45°00'00\" W, A DISTANCE OF 1411.79 FEET TO THE POINT OF BEGINNING; THENCE N 00°00'00\" E, A DISTANCE OF 587.72 FEET; THENCE S 45°00'00\" W, A DISTANCE OF 22.29 FEET; THENCE S 00°00'00\" E, A DISTANCE OF 152.92 FEET; THENCE N 90°00'00\" E, A DISTANCE OF 20.00 FEET; THENCE N 00°00'00\" E, A DISTANCE OF 144.64 FEET; THENCE N 45°00'00\" E, A DISTANCE OF 5.72 FEET; THENCE S 90°00'00\" E, A DISTANCE OF 571.15 FEET; THENCE S 45°00'00\" E, A DISTANCE OF 4.93 FEET; THENCE S 00°00'00\" E, A DISTANCE OF 664.22 FEET; THENCE S 37°38'44\" W, A DISTANCE OF 23.97 FEET; THENCE S 52°21'16\" E, A DISTANCE OF 20.00 FEET; THENCE N 37°38'44\" E, A DISTANCE OF 30.79 FEET; THENCE N 00°00'00\" E, A DISTANCE OF 664.24 FEET TO THE POINT OF BEGINNING.

## CERTIFICATE

I, CHARLES K. HOWARD, A REGISTERED SURVEYOR BY THE STATE OF OKLAHOMA, DO HEREBY CERTIFY THAT THIS IS NOT A LAND OR BOUNDARY SURVEY AND THAT NO EFFORT WAS MADE TO RESEARCH FOR ANY OTHER EASEMENTS AT THE COUNTY CLERK OR OTHER RECORDS OFFICE.

WITNESS MY HAND AND SEAL THIS 7 DAY OF APRIL, 2017

*Charles K. Howard*  
 CHARLES K. HOWARD P.L.S. NO. 297



JR DONELSON, INC.  
 PLANNING and DESIGN

12820 SO. MEMORIAL DR., #100  
 Bixby, Oklahoma 74008

C.A. NO. 5611  
 EX. DATE: 6/30/17

PHONE: (918) 394-3030  
 Fax (918) 394-3030

Scale: NTS DATE: 4/1/2017

CEDARCREEK DRAWN BY: JD

JOB # REVISED:

SITE LAST VISTED: