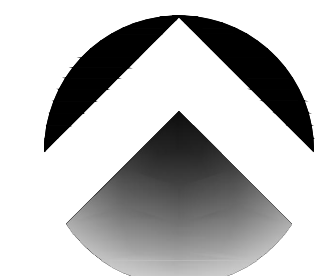
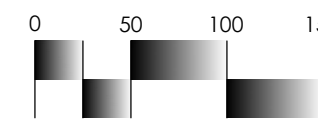


Aspen Ridge

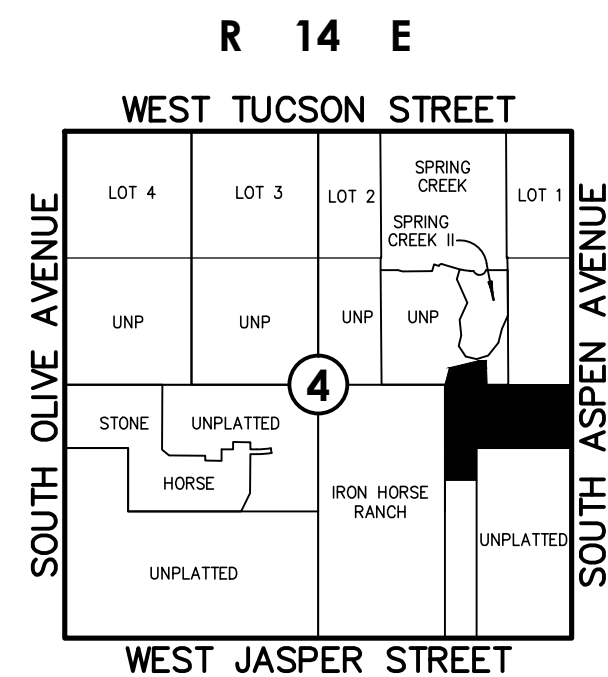
PART OF THE EAST HALF OF THE SOUTHEAST QUARTER (E/2 SE/4) AND PART OF THE SOUTHEAST QUARTER OF THE NORTHEAST QUARTER (SE/4 NE/4) OF SECTION FOUR (4), TOWNSHIP SEVENTEEN (17) NORTH, RANGE FOURTEEN (14) EAST OF THE INDIAN MERIDIAN, A SUBDIVISION IN THE CITY OF BROKEN ARROW, TULSA COUNTY, STATE OF OKLAHOMA



NORTH



Scale: 1"= 100'
Tanner Consulting



Location Map

Scale: 1"= 2000'



SUBDIVISION CONTAINS:

FIFTY-SIX (56) LOTS
IN THREE (3) BLOCKS & FOUR (4) RESERVES
GROSS SUBDIVISION AREA: 26.293 ACRES

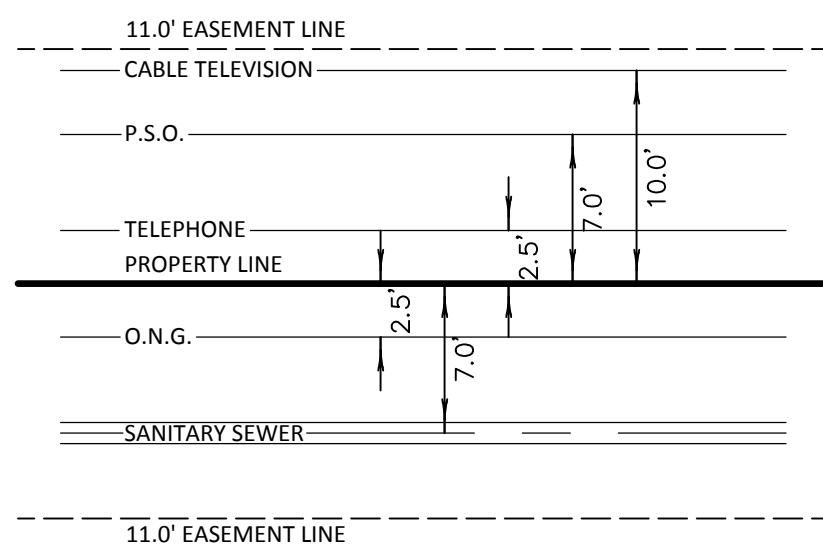
SURVEYOR/ENGINEER:
Tanner Consulting, L.L.C.

DAN E. TANNER, P.L.S. NO. 1435
OK CA NO. 2661, EXPIRES 6/30/2017
5323 South Lewis Avenue
Tulsa, Oklahoma 74105
Phone: (918)745-9929

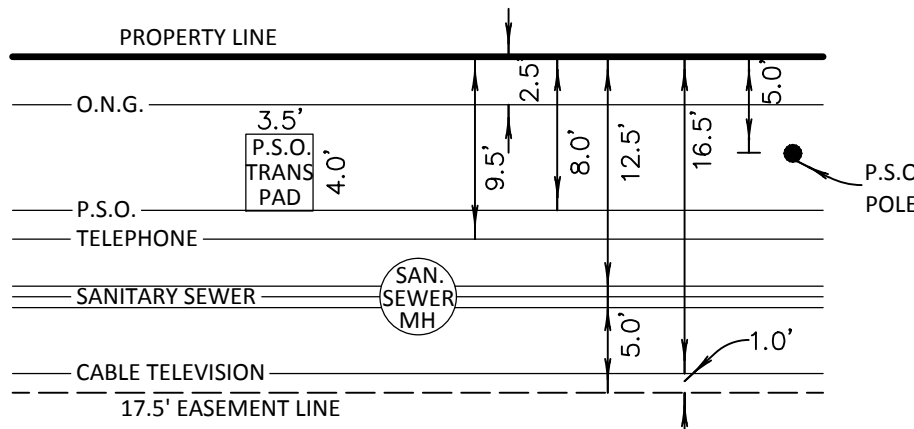
OWNER:
Aspen Crossing, LLC

CONTACT: DANIEL RUHL
11029 South Memorial Drive
Tulsa, Oklahoma 74133
Phone: 918-814-0881

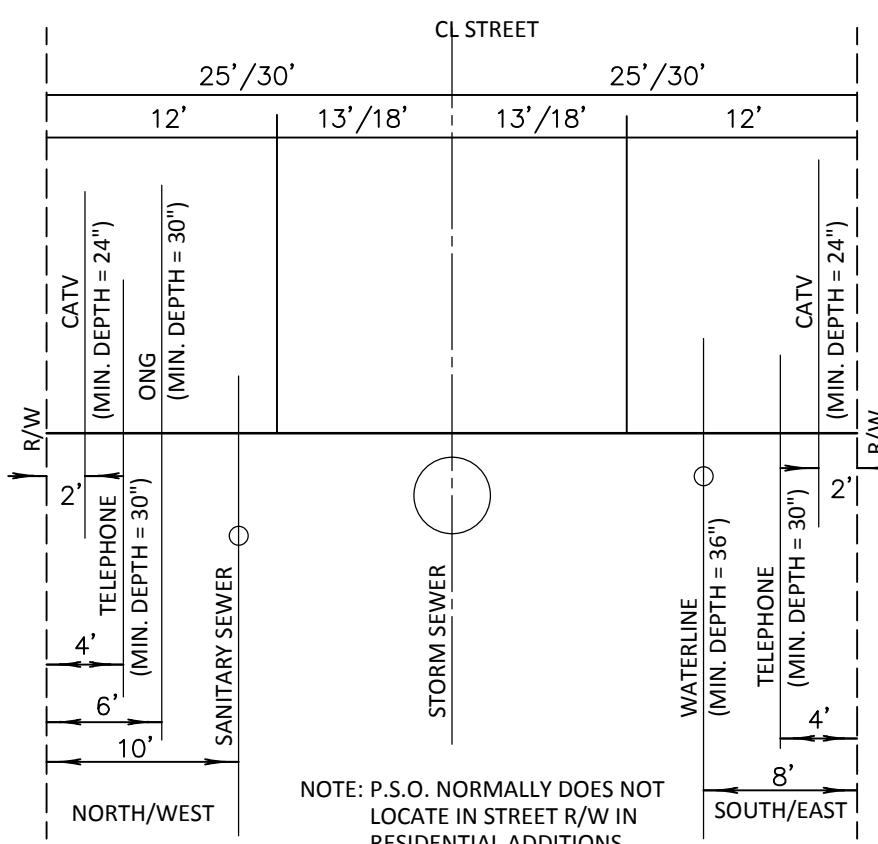
Aspen Crossing
CASE NO. BAZ-1949
DEVELOPMENT NO. 00-000



BACK TO BACK 11.0' EASEMENTS
STANDARD LOCATION OF UNDERGROUND UTILITIES



17.5' PERIMETER EASEMENT
STANDARD LOCATION OF UNDERGROUND UTILITIES



STANDARD LOCATION OF
UNDERGROUND UTILITY LINES FOR
RESIDENTIAL STREETS

