

# Monarch Waystation

[Certification Requirements](#)

[U.S. Fish and Wildlife](#)

[Smithsonian Information](#)

[Natural History Museum](#)

[Info. from Texas City](#)

## More plant info

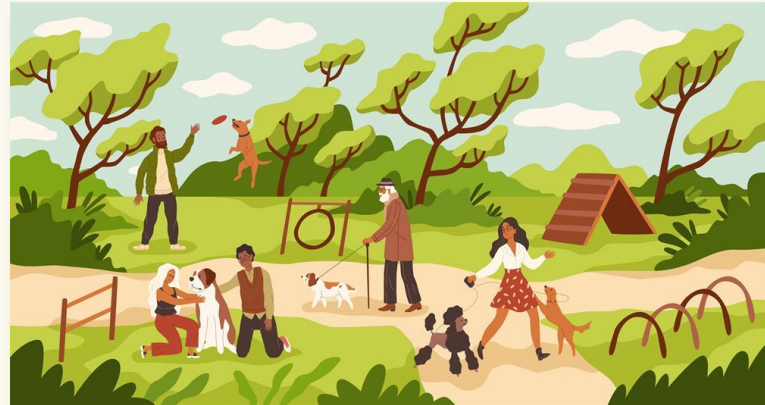
<https://extension.okstate.edu/fact-sheets/oklahoma-proven-plant-selections-for-oklahoma.html> - plants good for conditions in Oklahoma

<https://www.missouribotanicalgarden.org/gardens-gardening/your-garden/help-for-the-home-gardener/advice-tips-resources/visual-guides/selected-perennials-for-oklahoma> - perennial flowers that will come back consistently

<https://coloroklahoma.com> - info on native OK wildflowers and has a program for matching cost of wildflower purchases

# Broken Arrow Dog Park Project Support

Presented by:  
Broken Arrow Youth City Council



# Overview

**01**

**Objectives**

**02**

**Youth Perspective**

**03**

**Budget**

**04**

**Involvement of Parks  
Department**

**05**

**Conclusion**



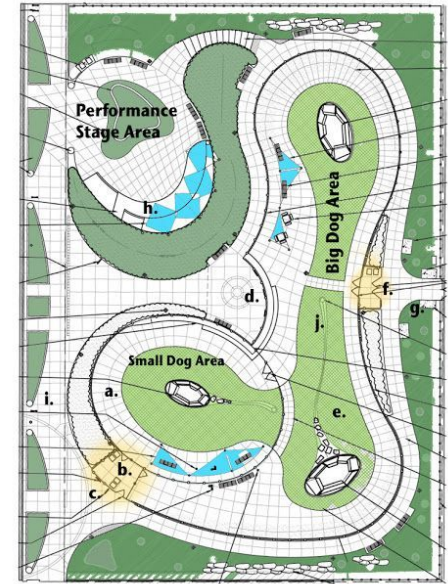


# Objectives

- Support the Parks and Recreations Departments proposal for a future dog park to be included in the upcoming bond issue.
- Fulfill the need of a dog park in Northeast Broken Arrow.
- Provide a safe and inviting space for dog owners and ordinary citizens alike to gather and enjoy
  - Potential for flower garden with monarch waystation certified flowers.

# Vision

The photos displayed aligned with an aesthetic that appealed to a youth audience.



# Youth Perspective

- With the inclusion of a flower garden, the dog park will provide a space for youth citizens to gather for photography (e.g. Prom, Senior Photos)
- Proves to youth population that the city is willing and able to invest in open green spaces.
  - Uplifts youth opinion of city and encourages retaining youth post-high school.





# Budget

Per the Parks and Recreation Department's recommendation, a total of \_\_\_\_\_\$ should be assigned in the upcoming Bond Issue to design and build a dog park in Broken Arrow per current material and land acquisition costs.





Estimated Cost of Project



Estimated # of Visitors to Park



Dog Population in Broken Arrow

# Involvement of Parks Department

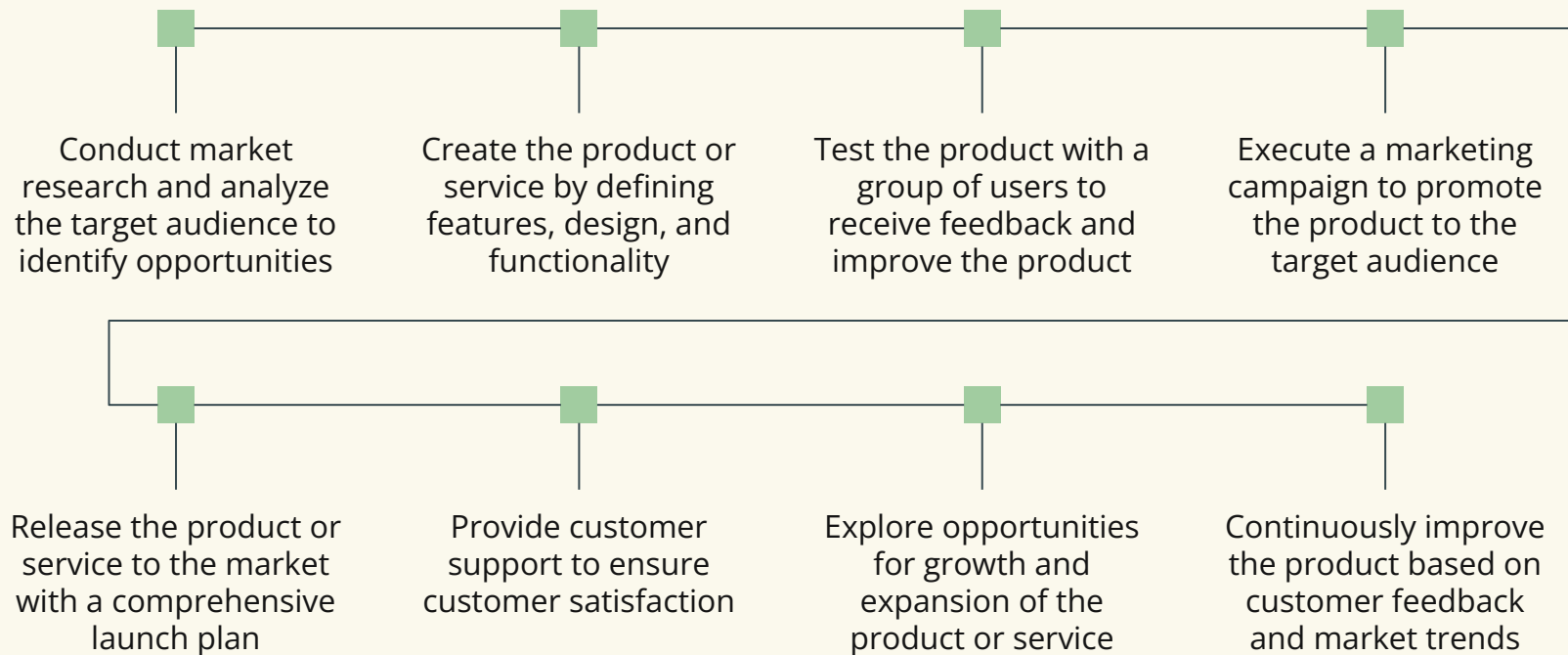




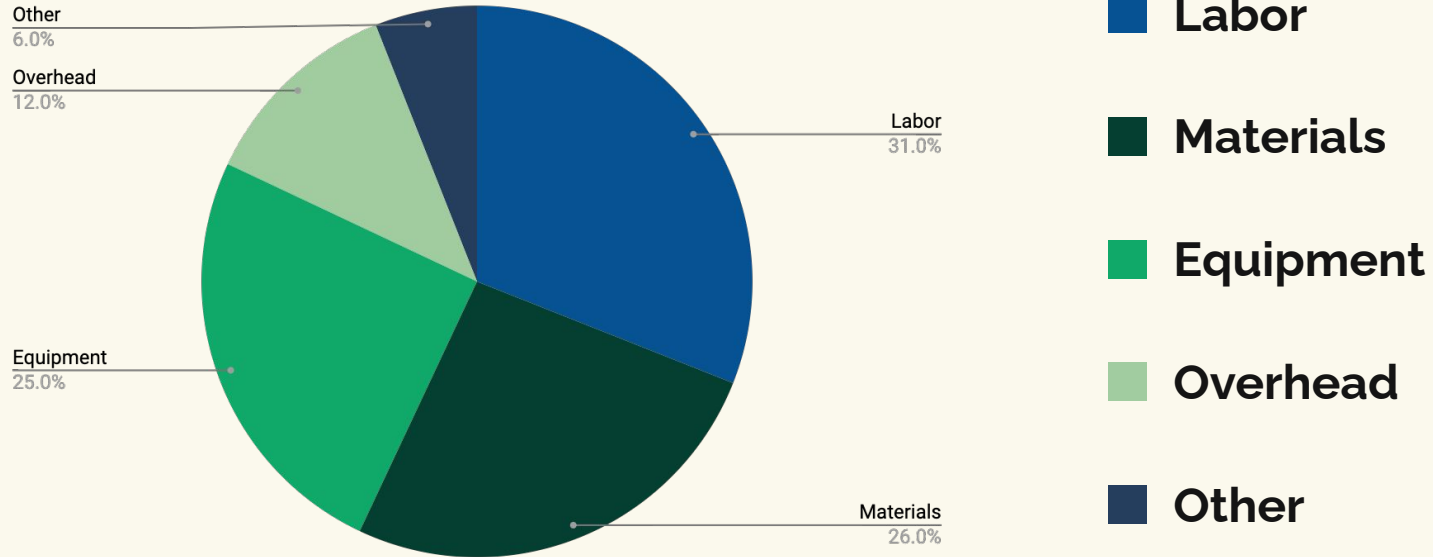
# Conclusion

We thank you for your support over the year!  
Look forward to the Youth City Council continuing to  
serve as a valued youth voice in  
Broken Arrow municipal government.

# Project timeline



# Project expenses



Follow the link in the graph to modify its data and then paste the new one here. [For more info, click here](#)