

PRELIMINARY PLAT

# The Villages at Seven Oaks South

PUD \_\_\_\_

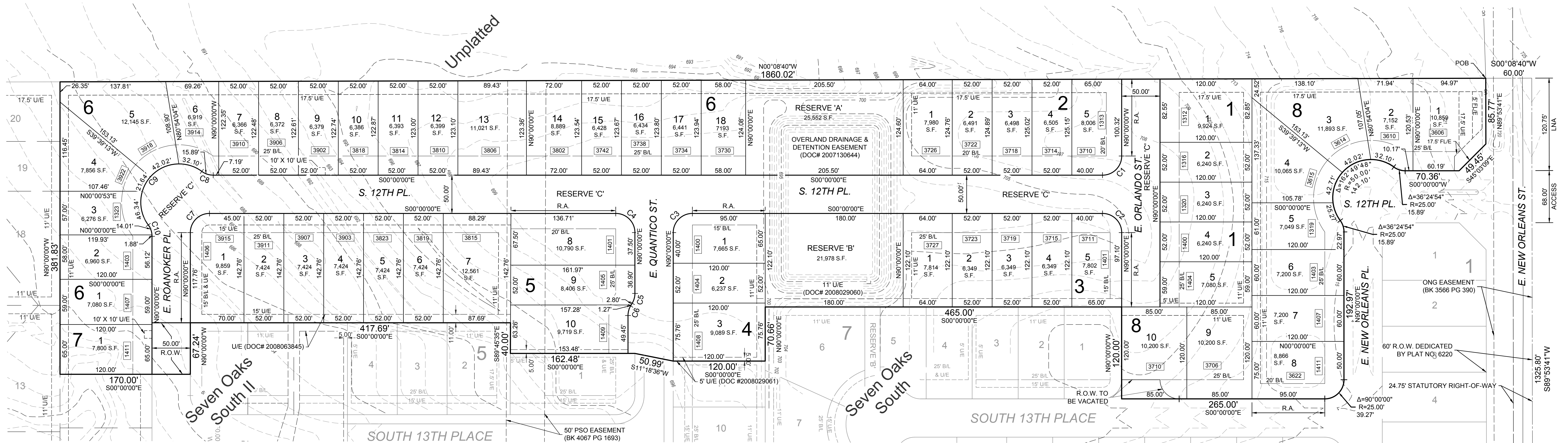
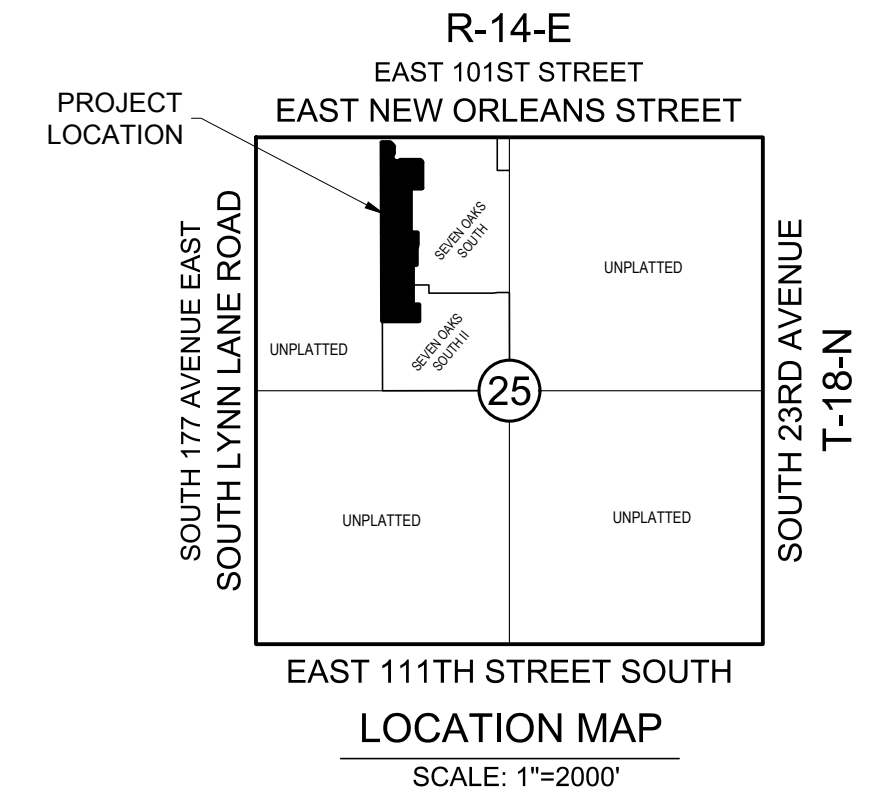
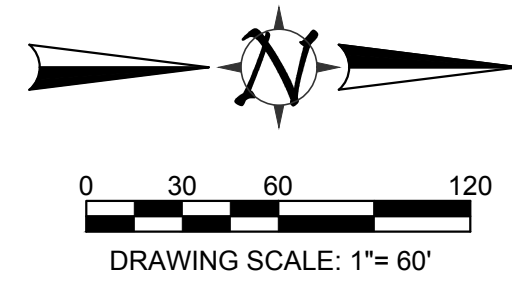
A SUBDIVISION IN THE CITY OF BROKEN ARROW, TULSA COUNTY, OKLAHOMA BEING A PART OF THE E/2 NW/4 OF SECTION TWENTY-FIVE (25), TOWNSHIP 18 NORTH, RANGE 14 EAST, OF THE INDIAN BASE AND MERIDIAN.

## OWNER/DEVELOPER

SEVEN OAKS SOUTH, LLC  
1420 WEST KENOSHIA  
BROKEN ARROW, OK 74012  
PHONE: 918-261-5200  
ATTN: CHUCK RAMSAY

## ENGINEER/SURVEYOR

AAB ENGINEERING LLC  
CERTIFICATE OF AUTHORIZATION NO. 6318, EXP. JUNE, 30, 2020  
PO BOX 2136  
SAND SPRINGS, OK 74063  
PHONE: 918.514.4283  
FAX: 918.514.4288  
EMAIL: ALAN@AABENG.COM



## LEGEND

B/L.....	BUILDING LINE
LNA.....	LIMITS OF NO ACCESS
POB.....	POINT OF BEGINNING
POC.....	POINT OF COMMENCEMENT
U/E.....	UTILITY EASEMENT
OD/E.....	OVERLAND DRAINAGE EASEMENT
R.O.W.....	RIGHT-OF-WAY
DOD.....	DEED OF DEDICATION
R.A.....	RESTRICTED ACCESS
XXXX	ADDRESSES

## SITE DATA

**BENCHMARK**  
3" ALUMINUM CAP-FLUSH-SET IN CONCRETE-STAMPED  
"TUL 4", SET WEST OF 23RD STREET, AND APPROXIMATELY 0.10  
MILES NORTH EAST OF FLORENCE STREET.  
ELEV = 633.40' (NAVD 1929)

**BASIS OF BEARINGS**  
THE BASIS OF BEARING FOR SAID TRACT IS S 89°53'41" W ALONG  
THE NORTH LINE OF THE NORTHWEST QUARTER (NW/4) OF  
SECTION 25, TOWNSHIP 18 NORTH, RANGE 14 EAST OF THE  
INDIAN BASE AND MERIDIAN, CITY OF BROKEN ARROW, TULSA  
COUNTY, STATE OF OKLAHOMA.

**MONUMENTATION**  
A 3/8" X 18" REBAR WITH A YELLOW PLASTIC CAP STAMPED  
"CA6318" TO BE SET AT ALL LOT CORNERS, POINTS OF CURVE,  
POINTS OF TANGENT, POINTS OF COMPOUND CURVE, POINTS OF  
REVERSE CURVE, UNLESS NOTED OTHERWISE.

**ADDRESSES**  
ADDRESSES SHOWN ON THIS PLAT WERE ACCURATE AT THE  
TIME THIS PLAT WAS FILED. ADDRESSES ARE SUBJECT TO  
CHANGE AND SHOULD NEVER BE RELIED ON IN PLACE OF LEGAL  
DESCRIPTION.

**CERTIFICATE OF SURVEY**  
THIS PLAT OF SURVEY MEETS THE OKLAHOMA MINIMUM  
STANDARDS FOR THE PRACTICE OF LAND SURVEYING AS  
ADOPTED BY THE OKLAHOMA STATE BOARD OF LICENSURE FOR  
PROFESSIONAL ENGINEER AND LAND SURVEYORS.

## CONTACTS

**MUNICIPAL AUTHORITY**  
CITY OF BROKEN ARROW  
210 SOUTH 1ST STREET  
BROKEN ARROW, OK 74012

### UTILITY CONTACTS

OKLAHOMA NATURAL  
GAS COMPANY  
5848 EAST 15TH STREET  
TULSA, OK 74112  
PHONE: 918.831.8293

WINDSTREAM TELECOM COMPANY  
2300 EAST 1ST PLACE  
BROKEN ARROW, OK 74012  
PHONE: 918.451.3427

AEP / PSO  
212 EAST 6TH STREET  
TULSA, OK 74119  
PHONE: 918.599.2351

COX COMMUNICATIONS  
11811 EAST 51ST STREET  
TULSA, OK 74145  
PHONE: 918.286.4658

## CURVE TABLE

CURVE #	LENGTH	RADIUS	DELTA
C1	39.27'	25.00'	90°00'00"
C2	39.27'	25.00'	90°00'00"
C3	39.27'	25.00'	90°00'00"
C4	39.27'	25.00'	90°00'00"
C5	13.32'	25.00'	30°31'44"
C6	13.32'	25.00'	30°31'44"
C7	39.27'	25.00'	90°00'00"
C8	15.89'	25.00'	36°24'54"
C9	142.10'	50.00'	162°49'48"
C10	15.89'	25.00'	36°24'54"

## SUBDIVISION STATISTICS

SUBDIVISION CONTAINS FIFTY SEVEN (57) LOTS IN EIGHT (8) BLOCKS AND TWO (2) RESERVE AREAS	
BLOCK 1.....	0.82 ACRES - 5 LOTS
BLOCK 2.....	0.81 ACRES - 5 LOTS
BLOCK 3.....	0.80 ACRES - 5 LOTS
BLOCK 4.....	0.53 ACRES - 3 LOTS
BLOCK 5.....	2.03 ACRES - 10 LOTS
BLOCK 6.....	3.03 ACRES - 18 LOTS
BLOCK 7.....	0.18 ACRES - 1 LOT
BLOCK 8.....	2.08 ACRES - 10 LOTS
STREET R.O.W.....	2.31 ACRES
RESERVE A.....	0.59 ACRES
RESERVE B.....	0.50 ACRES
SUBDIVISION CONTAINS.....13.68 ACRES	

NORTHEAST CORNER OF THE  
NW/4 OF SECTION 25 T-18-N R-14-E

APPROVED BY THE CITY COUNCIL OF THE  
CITY OF BROKEN ARROW, OKLAHOMA.

MAYOR \_\_\_\_\_

ATTEST: CITY CLERK \_\_\_\_\_

**THE VILLAGES AT SEVEN OAKS SOUTH**  
Case No. \_\_\_\_\_  
Development No. ###-###  
Sheet 1 of 3





FILED: PLANNED SEVEN OAKS SOUTH, RESERVE AREAS SOUTH VILLAGES  
NOT DATE: MAY 14, 2024

PRELIMINARY PLAT

# The Villages at Seven Oaks South

PUD \_\_\_\_

A SUBDIVISION IN THE CITY OF BROKEN ARROW, TULSA COUNTY, OKLAHOMA BEING A PART OF THE E/2 NW/4 OF SECTION TWENTY-FIVE (25), TOWNSHIP 18 NORTH, RANGE 14 EAST, OF THE INDIAN BASE AND MERIDIAN.

OWNER/DEVELOPER

SEVEN OAKS SOUTH, LLC

1420 WEST KENOSHA  
BROKEN ARROW, OK 74012  
PHONE: 918-261-5200  
ATTN: CHUCK RAMSAY

ENGINEER/SURVEYOR

AAB ENGINEERING LLC

CERTIFICATE OF AUTHORIZATION NO. 6318, EXP. JUNE. 30, 2020  
PO BOX 2136  
SAND SPRINGS, OK 74063  
PHONE: 918.514.4283  
FAX: 918.514.4288  
EMAIL: ALAN @ AABENG.COM

DEED OF DEDICATION AND RESTRICTIVE COVENANTS

NOW ALL MEN BY THESE PRESENTS:

SEVEN OAKS SOUTH, LLC, AN OKLAHOMA LIMITED LIABILITY COMPANY, HERINAFTER TOGETHER REFERRED TO AS THE "OWNER/DEVELOPER" IS THE OWNER OF THE FOLLOWING DESCRIBED LAND IN THE CITY OF BROKEN ARROW, BROKEN ARROW COUNTY, STATE OF OKLAHOMA, TO-WIT:

A TRACT OF LAND SITUATED IN THE EAST HALF OF THE NORTHWEST QUARTER (E/2 NW/4) OF SECTION 25, TOWNSHIP 18 NORTH, RANGE 14 EAST OF THE INDIAN BASE AND MERIDIAN, CITY OF BROKEN ARROW, TULSA COUNTY, STATE OF OKLAHOMA, ACCORDING TO THE U.S. GOVERNMENT THEREOF, MORE PARTICULARLY DESCRIBED AS FOLLOWS:

COMMENCING AT THE NORTHWEST CORNER OF SAID SECTION 25, THENCE NORTH 89°53'41" EAST ALONG THE NORTH LINE OF SAID SECTION 25, A DISTANCE OF 1325.62 FEET; THENCE SOUTH 00°08'40" EAST, A DISTANCE OF 60.00 FEET TO THE POINT OF BEGINNING, SAID POINT OF BEGINNING ALSO BEING ON THE BOUNDARY OF SEVEN OAKS SOUTH, A SUBDIVISION IN THE CITY OF BROKEN ARROW AND THENCE ALONG SAID BOUNDARY OF SEVEN OAKS SOUTH FOR THE FOLLOWING SEVENTEEN CALLS; THENCE NORTH 89°53'41" EAST, A DISTANCE OF 85.77 FEET; THENCE SOUTH 45°03'09" EAST, A DISTANCE OF 49.45 FEET; THENCE SOUTH 00°00'00" WEST, A DISTANCE OF 70.36 FEET; THENCE ON A CURVE TO THE RIGHT WITH A RADIUS OF 25.00 FEET AND A DELTA OF 36°24'54", HAVING A CHORD BEARING OF SOUTH 18°12'27" WEST AND A CHORD DISTANCE OF 15.62 FEET, AN ARC DISTANCE OF 15.89 FEET; THENCE ON A CURVE TO THE LEFT WITH A RADIUS OF 50.00 FEET AND A DELTA OF 162°49'48", HAVING A CHORD BEARING OF SOUTH 45°00'00" EAST AND A CHORD DISTANCE OF 98.88 FEET, AN ARC DISTANCE OF 142.10 FEET; THENCE ON A CURVE TO THE RIGHT WITH A RADIUS OF 25.00 FEET AND A DELTA OF 36°24'54", HAVING A CHORD BEARING OF NORTH 71°47'33" EAST AND A CHORD DISTANCE OF 15.92 FEET, AN ARC DISTANCE OF 15.89 FEET; THENCE NORTH 90°00'00" EAST, A DISTANCE OF 182.97 FEET; THENCE ON A CURVE TO THE RIGHT WITH A RADIUS OF 25.00 FEET AND A DELTA OF 90°00'00", HAVING A CHORD BEARING OF SOUTH 45°00'00" EAST AND A CHORD DISTANCE OF 35.36 FEET, AN ARC DISTANCE OF 39.27 FEET; THENCE SOUTH 00°00'00" WEST, A DISTANCE OF 265.00 FEET; THENCE SOUTH 90°00'00" WEST, A DISTANCE OF 120.00 FEET; THENCE SOUTH 00°00'00" WEST, A DISTANCE OF 485.00 FEET; THENCE NORTH 90°00'00" EAST, A DISTANCE OF 70.66 FEET; THENCE SOUTH 00°00'00" WEST, A DISTANCE OF 120.00 FEET; THENCE SOUTH 11°18'36" WEST, A DISTANCE OF 50.99 FEET; THENCE SOUTH 00°00'00" WEST, A DISTANCE OF 162.48 FEET; THENCE NORTH 89°45'35" WEST A DISTANCE OF 40.00 FEET; THENCE SOUTH 00°00'00" WEST A DISTANCE OF 417.69 FEET ALONG THE BOUNDARY OF SAID SEVEN OAKS SOUTH AND ALONG THE BOUNDARY OF SEVEN OAKS SOUTH II, A SUBDIVISION IN THE CITY OF BROKEN ARROW AND THENCE ALONG SAID BOUNDARY OF SEVEN OAKS SOUTH FOR THE FOLLOWING THREE CALLS; THENCE SOUTH 90°00'00" EAST A DISTANCE OF 67.24 FEET; THENCE SOUTH 00°00'00" WEST, A DISTANCE OF 170.00 FEET; THENCE NORTH 90°00'00" WEST, A DISTANCE OF 381.83 TO THE NORTHWEST CORNER OF SAID SEVEN OAKS SOUTH II; THENCE NORTH 00°08'40" WEST, A DISTANCE OF 1860.02 FEET TO THE POINT OF BEGINNING.

SAID TRACT CONTAINS 595,971.88 SQUARE FEET OR 13.68 ACRES

AND HAS CAUSED THE ABOVE DESCRIBED TRACT OF LAND TO BE SURVEYED, STAKED, PLATTED AND SUBDIVIDED INTO 57 LOTS IN 8 BLOCKS, IN CONFORMITY WITH THE ACCOMPANYING PLAT, AND HAS DESIGNATED THE SUBDIVISION AS "THE VILLAGES AT SEVEN OAKS SOUTH," A SUBDIVISION IN THE CITY OF BROKEN ARROW, BROKEN ARROW COUNTY, OKLAHOMA (HEREINAFTER REFERRED TO AS "THE VILLAGES AT SEVEN OAKS SOUTH" OR THE "SUBDIVISION").

SECTION I. PUBLIC STREETS, EASEMENTS AND UTILITIES

- A. **PUBLIC STREETS AND GENERAL UTILITY EASEMENTS**  
THE OWNER/DEVELOPER DOES HEREBY DEDICATE FOR PUBLIC USE THE STREETS DEPICTED ON THE ACCOMPANYING PLAT AND DOES FURTHER DEDICATE FOR PUBLIC USE THE UTILITY EASEMENTS AS DEPICTED ON THE ACCOMPANYING PLAT AS "UT" OR "UTILITY EASEMENT", FOR OWNER/DEVELOPER AND ALL UTILITY SERVICES WITH FRANCHISE RIGHTS WITHIN THE CITY OF BROKEN ARROW FOR THE SEVERAL PURPOSES OF CONSTRUCTING, MAINTAINING, OPERATING, REPAIRING, REPLACING, AND/OR REMOVING ANY AND ALL PUBLIC UTILITIES, INCLUDING STORM SEWERS, SANITARY SEWERS, TELEPHONE AND COMMUNICATION LINES, ELECTRIC POWER LINES AND TRANSFORMERS, GAS LINES, WATER LINES AND CABLE TELEVISION LINES, TOGETHER WITH ALL FITTINGS, INCLUDING THE POLES, WIRES, CONDUITS, PIPES, VALVES, METERS AND EQUIPMENT FOR EACH OF SUCH FACILITIES AND ANY OTHER APPURTENANCES THERETO, WITH THE RIGHTS OF INGRESS AND EGRESS TO AND UPON THE UTILITY EASEMENTS FOR THE USES AND PURPOSES AFORESAID, PROVIDED HOWEVER, THE OWNER/DEVELOPER HEREBY RESERVES THE RIGHT TO CONSTRUCT, MAINTAIN, OPERATE, LAY AND RE-LAY ALL UTILITY LINES, INCLUDING WATER LINES AND SEWER LINES, TOGETHER WITH THE RIGHT OF INGRESS AND EGRESS FOR SUCH CONSTRUCTION, MAINTENANCE, OPERATION, LAYING AND RE-LAYING OVER, ACROSS AND ALONG ALL OF THE UTILITY EASEMENTS DEPICTED ON THE PLAT, FOR THE PURPOSE OF FURNISHING WATER SERVICE, SEWER SERVICE AND ALL UTILITY SERVICES TO THE AREA INCLUDED IN THE PLAT AND ELSEWHERE, AS MAY BE REQUIRED. THE OWNER/DEVELOPER HEREIN IMPOSES A RESTRICTIVE COVENANT, WHICH COVENANT SHALL BE BINDING ON EACH LOT OWNER AND SHALL BE ENFORCEABLE BY THE CITY OF BROKEN ARROW, OKLAHOMA, AND BY THE SUPPLIER OF ANY AFFECTED UTILITY SERVICE, THAT WITHIN THE UTILITY EASEMENTS DEPICTED ON THE ACCOMPANYING PLAT NO BUILDING, STRUCTURE OR OTHER ABOVE OR BELOW GROUND OBSTRUCTION SHALL BE PLACED, ERECTED, INSTALLED OR MAINTAINED, PROVIDED HOWEVER, NOTHING HEREIN SHALL BE DEEMED TO PROHIBIT DRIVES, PARKING AREAS, CURBING, LANDSCAPING, CUSTOMARY SCREENING FENCES AND WALLS THAT DO NOT CONSTITUTE AN OBSTRUCTION.
- B. **UNDERGROUND SERVICE**  
1. OVERHEAD LINES FOR THE SUPPLY OF ELECTRIC, TELEPHONE AND CABLE TELEVISION SERVICES MAY BE LOCATED ALONG THE PERIMETER EASEMENTS OF THE SUBDIVISION, STREET LIGHT POLES OR STANDARDS MAY BE SERVED BY OVERHEAD LINE OR UNDERGROUND CABLE AND ELSEWHERE THROUGHOUT THE SUBDIVISION. ALL SUPPLY LINES SHALL BE LOCATED UNDERGROUND IN THE GENERAL UTILITY EASEMENTS. SERVICE PEDESTALS AND TRANSFORMERS, AS SOURCES OF SUPPLY AT SECONDARY VOLTAGES, MAY ALSO BE LOCATED IN THE GENERAL UTILITY EASEMENTS.  
2. UNDERGROUND SERVICE CABLES TO ALL STRUCTURES WHICH MAY BE LOCATED WITHIN THE SUBDIVISION MAY BE RUN FROM THE NEAREST SERVICE PEDESTAL OR TRANSFORMER TO THE POINT OF USAGE DETERMINED BY THE LOCATION AND CONSTRUCTION OF SUCH STRUCTURE AS MAY BE LOCATED UPON THE LOT, PROVIDED THAT UPON THE INSTALLATION OF A SERVICE CABLE TO A PARTICULAR STRUCTURE, THE SUPPLIER OF SERVICE SHALL THEREAFTER BE DEEMED TO HAVE A DEFINITIVE, PERMANENT AND EFFECTIVE EASEMENT ON THE LOT, COVERING A 5 FOOT STRIP EXTENDING 2.5 FEET ON EACH SIDE OF THE SERVICE CABLE, EXTENDING FROM THE SERVICE PEDESTAL OR TRANSFORMER TO THE SERVICE ENTRANCE ON THE STRUCTURE.  
3. THE SUPPLIER OF ELECTRIC, TELEPHONE AND CABLE TELEVISION SERVICES, THROUGH ITS AGENTS AND EMPLOYEES, SHALL AT ALL TIMES HAVE RIGHT OF ACCESS TO ALL GENERAL UTILITY EASEMENTS DEPICTED ON THE ACCOMPANYING PLAT OR OTHERWISE PROVIDED FOR IN THIS DEED OF DEDICATION

- FOR THE PURPOSE OF INSTALLING, MAINTAINING, REMOVING OR REPLACING ANY PORTION OF THE UNDERGROUND ELECTRIC, TELEPHONE OR CABLE TELEVISION FACILITIES INSTALLED BY THE SUPPLIER OF THE UTILITY SERVICE.
4. THE OWNER OF THE LOT SHALL BE RESPONSIBLE FOR THE PROTECTION OF THE UNDERGROUND SERVICE FACILITIES LOCATED ON HIS LOT AND SHALL PREVENT THE ALTERATION OF GRADE OR ANY CONSTRUCTION ACTIVITY THAT WOULD INTERFERE WITH THE ELECTRIC, TELEPHONE OR CABLE TELEVISION FACILITIES. THE SUPPLIER OF SERVICE SHALL BE RESPONSIBLE FOR ORDINARY MAINTENANCE OF UNDERGROUND FACILITIES, BUT THE OWNER SHALL PAY FOR DAMAGE OR RELOCATION OF SUCH FACILITIES CAUSED OR NECESSITATED BY ACTS OF THE OWNER OR HIS AGENTS OR CONTRACTORS.
5. THE FOREGOING COVENANTS SET FORTH IN THIS PARAGRAPH B SHALL BE ENFORCEABLE BY THE SUPPLIER OF THE ELECTRIC, TELEPHONE OR CABLE TELEVISION SERVICE AND THE OWNER OF THE LOT AGREES TO BE BOUND HEREBY.
- C. **WATER, SANITARY SEWER AND STORM SEWER SERVICE**  
1. THE OWNER OF THE LOT SHALL BE RESPONSIBLE FOR THE PROTECTION OF THE PUBLIC WATER MAINS, SANITARY SEWER MAINS AND STORM SEWERS LOCATED ON THEIR LOT AND SHALL PREVENT THE ALTERATION OF GRADE OR ANY CONSTRUCTION ACTIVITY WHICH MAY INTERFERE WITH SAID PUBLIC WATER MAIN, PUBLIC SANITARY SEWER MAIN OR STORM SEWER.  
2. WITHIN THE UTILITY EASEMENT AREAS DEPICTED ON THE ACCOMPANYING PLAT, THE ALTERATION OF GRADE FROM THE CONTOURS EXISTING UPON THE COMPLETION OF THE INSTALLATION OF A PUBLIC WATER MAIN, SANITARY SEWER MAIN OR STORM SEWER, OR ANY CONSTRUCTION ACTIVITY WHICH WOULD INTERFERE WITH PUBLIC WATER MAINS, SANITARY SEWER MAINS AND STORM SEWERS SHALL BE PROHIBITED. THE CITY OF BROKEN ARROW MAY SPECIFICALLY ENFORCE THIS PROVISION.  
3. THE CITY OF BROKEN ARROW, OKLAHOMA, OR ITS SUCCESSORS, SHALL BE RESPONSIBLE FOR ORDINARY MAINTENANCE OF PUBLIC WATER AND SEWER MAINS, BUT THE OWNER SHALL PAY FOR DAMAGE OR RELOCATION OF SUCH FACILITIES CAUSED OR NECESSITATED BY ACTS OF THE OWNER, HIS AGENTS OR CONTRACTORS.  
4. THE CITY OF BROKEN ARROW, OKLAHOMA, OR ITS SUCCESSORS, SHALL AT ALL TIMES HAVE RIGHT OF ACCESS TO ALL EASEMENTS DEPICTED ON THE ACCOMPANYING PLAT, OR OTHERWISE PROVIDED FOR IN THIS DEED OF DEDICATION, FOR THE PURPOSE OF INSTALLING, MAINTAINING, REMOVING OR REPLACING ANY PORTION OF UNDERGROUND WATER OR SEWER FACILITIES.  
5. THE FOREGOING COVENANTS SET FORTH IN THIS PARAGRAPH C SHALL BE ENFORCEABLE BY THE CITY OF BROKEN ARROW, OKLAHOMA, OR ITS SUCCESSORS, AND THE OWNER OF THE LOT AGREES TO BE BOUND HEREBY.
- D. **PAVING AND LANDSCAPING WITHIN EASEMENTS**  
THE OWNER OF THE LOT AFFECTED SHALL BE RESPONSIBLE FOR THE REPAIR OF DAMAGE TO LANDSCAPING AND PAVING OCCASIONED BY NECESSARY INSTALLATION OR MAINTENANCE OF UNDERGROUND WATER, SEWER, STORM SEWER, NATURAL GAS, COMMUNICATION, CABLE TELEVISION OR ELECTRIC FACILITIES WITHIN THE EASEMENT AREAS DEPICTED UPON THE ACCOMPANYING PLAT, PROVIDED, HOWEVER, THE CITY OF BROKEN ARROW, OKLAHOMA, OR THE SUPPLIER OF THE UTILITY SERVICE SHALL USE REASONABLE CARE IN THE PERFORMANCE OF SUCH ACTIVITIES.
- E. **GAS SERVICE**  
1. THE OWNER OF THE LOT SHALL BE RESPONSIBLE FOR THE PROTECTION OF THE UNDERGROUND GAS FACILITIES LOCATED ON THE LOT.  
2. WITHIN THE DEPICTED UTILITY EASEMENT AREAS, THE ALTERATION OF GRADE OR ANY CONSTRUCTION ACTIVITY, WHICH MAY INTERFERE WITH THE UNDERGROUND GAS FACILITIES, SHALL BE PROHIBITED.  
3. THE SUPPLIER OF GAS SERVICE OR ITS SUCCESSORS SHALL BE RESPONSIBLE FOR ORDINARY MAINTENANCE OF THE GAS FACILITIES, BUT THE OWNER SHALL PAY FOR DAMAGE OR RELOCATION OF SUCH FACILITIES CAUSED OR NECESSITATED BY ACTS OF THE OWNER, HIS AGENTS OR CONTRACTORS.  
4. THE SUPPLIER OF GAS SERVICE OR ITS SUCCESSORS SHALL AT ALL TIMES HAVE RIGHT OF ACCESS WITH THEIR EQUIPMENT TO ALL EASEMENT, WAYS DEPICTED ON THE PLAT OR OTHERWISE PROVIDED FOR IN THIS DEED OF DEDICATION FOR THE PURPOSE OF INSTALLING, MAINTAINING, REMOVING OR REPLACING ANY PORTION OF UNDERGROUND GAS FACILITIES.  
5. UNDERGROUND GAS SERVICE LINES TO ALL STRUCTURES WHICH MAY BE LOCATED WITHIN THE SUBDIVISION MAY BE RUN FROM THE NEAREST GAS MAIN TO THE POINT OF USAGE DETERMINED BY THE LOCATION AND CONSTRUCTION OF SUCH STRUCTURE AS MAY BE LOCATED UPON THE LOT, PROVIDED THAT UPON THE INSTALLATION OF A SERVICE LINE TO A PARTICULAR STRUCTURE, THE SUPPLIER OF SERVICE SHALL THEREAFTER BE DEEMED TO HAVE A DEFINITIVE, PERMANENT AND EFFECTIVE EASEMENT ON THE LOT, COVERING A 5 FOOT STRIP EXTENDING 2.5 FEET ON EACH SIDE OF THE SERVICE LINE, EXTENDING FROM THE GAS MAIN TO THE SERVICE ENTRANCE ON THE STRUCTURE.  
6. THE FOREGOING COVENANTS SET FORTH IN THIS SUBSECTION D SHALL BE ENFORCEABLE BY THE SUPPLIER OF GAS SERVICE OR ITS SUCCESSORS AND THE OWNER OF THE LOT AGREES TO BE BOUND HEREBY.
- F. **LIMITS OF NO ACCESS**  
THE UNDERSIGNED OWNER/DEVELOPER HEREBY RELINQUISHES RIGHTS OF VEHICULAR INGRESS OR EGRESS FROM ANY PORTION OF THE PROPERTY ADJACENT TO EAST NEW ORLEANS STREET WITHIN THE BOUNDS DESIGNATED AS "LIMITS OF NO ACCESS" (L.N.A.) ON THE ACCOMPANYING PLAT, WHICH "LIMITS OF NO ACCESS" MAY BE AMENDED OR RELEASED BY THE BROKEN ARROW AREA PLANNING COMMISSION, OR ITS SUCCESSOR, WITH THE APPROVAL OF THE CITY OF BROKEN ARROW, OKLAHOMA, OR AS OTHERWISE PROVIDED BY THE STATUTES AND LAWS OF THE STATE OF OKLAHOMA PERTAINING THERETO, AND THE LIMITS OF NO ACCESS ABOVE ESTABLISHED SHALL BE ENFORCEABLE BY THE CITY OF BROKEN ARROW.
- G. **SURFACE DRAINAGE AND LOT GRADING RESTRICTION**  
EACH LOT SHALL RECEIVE AND DRAIN, IN AN UNOBSTRUCTED MANNER, THE STORM AND SURFACE WATERS FROM LOTS AND DRAINAGE AREAS OF HIGHER ELEVATION AND FROM PUBLIC STREETS AND EASEMENTS. NO LOT OWNER SHALL CONSTRUCT OR PERMIT TO BE CONSTRUCTED ANY FENCING OR OTHER OBSTRUCTIONS WHICH WOULD IMPAIR THE DRAINAGE OF STORM AND SURFACE WATERS OVER AND ACROSS HIS LOT. THE FOREGOING COVENANTS SET FORTH IN THIS PARAGRAPH F SHALL BE ENFORCEABLE BY ANY AFFECTED LOT OWNER AND BY THE CITY OF BROKEN ARROW, OKLAHOMA.
- H. **RESERVE AREAS A & B**  
1. THE USE OF RESERVE AREAS A & B SHALL BE LIMITED TO USE AS OPEN SPACE, LANDSCAPING, OVERLAND DRAINAGE, DETENTION AND UTILITY EASEMENTS AND IS RESERVED FOR SUBSEQUENT CONVEYANCE TO THE HOMEOWNERS' ASSOCIATION.  
2. THE OWNER DOES HEREBY DEDICATE TO THE PUBLIC A PERPETUAL EASEMENT ON, OVER, AND ACROSS THE PROPERTY DESIGNATED AND SHOWN ON THE ACCOMPANYING PLAT AS RESERVE "A" /STORMWATER DETENTION EASEMENT FOR THE PURPOSES OF PERMITTING THE FLOW, CONVEYANCE, RETENTION, DETENTION AND DISCHARGE OF STORMWATER RUNOFF FROM THE SUBDIVISION.

3. DETENTION, RETENTION AND OTHER DRAINAGE FACILITIES LOCATED WITHIN THE STORMWATER DETENTION EASEMENT SHALL BE CONSTRUCTED IN ACCORDANCE WITH STANDARDS AND SPECIFICATIONS APPROVED BY THE CITY OF BROKEN ARROW, OKLAHOMA.
4. NO FENCE, WALL, BUILDING, OR OTHER OBSTRUCTION MAY BE PLACED OR MAINTAINED IN THE STORMWATER DETENTION EASEMENT NOR SHALL THERE BE ANY ALTERATION OF GRADE IN SAID EASEMENTS UNLESS APPROVED BY THE CITY OF BROKEN ARROW, OKLAHOMA.
5. DETENTION, RETENTION, AND OTHER DRAINAGE FACILITIES SHALL BE MAINTAINED BY THE HOMEOWNERS' ASSOCIATION PROVIDED FOR IN THIS DEED OF DEDICATION, TO THE EXTENT NECESSARY TO ACHIEVE THE INTENDED DRAINAGE, RETENTION, AND DETENTION FUNCTIONS INCLUDING REPAIR OF APPURTENANCES AND REMOVAL OF OBSTRUCTIONS AND SILTATION. DETENTION FACILITIES SHALL BE MAINTAINED BY THE HOMEOWNERS ASSOCIATION IN ACCORDANCE WITH THE FOLLOWING MINIMUM STANDARDS:
- a. GRASS AREAS SHALL BE MOWED (IN SEASON) AT REGULAR INTERVALS OF FOUR WEEKS, OR LESS.
  - b. CONCRETE APPURTENANCES SHALL BE MAINTAINED IN GOOD CONDITION AND REPLACED IF DAMAGED.
  - c. THE DETENTION EASEMENT SHALL BE KEPT FREE OF DEBRIS.
  - d. CLEANING OF SILTATION AND VEGETATION FROM CHANNELS SHALL BE PREFORMED TWICE YEARLY.
6. LANDSCAPING, APPROVED BY THE CITY OF BROKEN ARROW, OKLAHOMA, SHALL BE ALLOWED WITHIN THE STORMWATER DETENTION EASEMENT.
7. IN THE EVENT THE HOMEOWNERS ASSOCIATION SHOULD FAIL TO PROPERLY MAINTAIN THE DETENTION, RETENTION, AND OTHER DRAINAGE FACILITIES OR, IN THE EVENT OF THE PLACEMENT OF AN OBSTRUCTION WITHIN, OR THE ALTERATION OF GRADE, THE CITY OF BROKEN ARROW, OKLAHOMA, OR ITS DESIGNATED CONTRACTOR MAY ENTER AND PERFORM MAINTENANCE NECESSARY TO ACHIEVE THE INTENDED DRAINAGE FUNCTIONS AND MAY REMOVE ANY OBSTRUCTION OR CORRECT ANY ALTERATION OF GRADE, AND THE COSTS THEREOF SHALL BE PAID BY THE HOMEOWNERS ASSOCIATION. IN THE EVENT THE HOMEOWNERS ASSOCIATION FAILS TO PAY THE COST OF MAINTENANCE AFTER COMPLETION OF THE MAINTENANCE AND RECEIPT OF A STATEMENT OF COSTS, THE CITY OF BROKEN ARROW, OKLAHOMA, MAY FILE OF RECORD A COPY OF THE STATEMENT OF COSTS IN THE LAND RECORDS OF THE BROKEN ARROW COUNTY CLERK, AND THEREAFTER THE COSTS SHALL BE A LIEN AGAINST EACH LOT IN THE SUBDIVISION, PROVIDED THAT THE LIEN AGAINST A LOT SHALL BE EQUAL TO 1/57TH OF THE COSTS. A LIEN ESTABLISHED AS ABOVE PROVIDED MAY BE FORECLOSED BY THE CITY OF BROKEN ARROW, OKLAHOMA.

- I. **RESERVE AREA C (PRIVATE STREETS)**  
THE OWNER/DEVELOPER HEREBY DEDICATES THE AREAS DEDICATED ON THE ACCOMPANYING PLAT AS RESERVE 'C' AS PRIVATE STREETS FOR THE COMMON USE AND ENJOYMENT OF THE PROPERTY OWNERS ADJACENT THERETO, AND THEIR HEIRS GUESTS AND INVITEES, FOR THE PURPOSE OF PROVIDING VEHICULAR AND PEDESTRIAN ACCESS TO AND FROM THE VARIOUS LOTS AND TO AND FORM THE PUBLIC STREETS. SAID STREETS SHALL BE MAINTAINED BY THE HOME OWNER'S ASSOCIATION AT THEIR SOLE COSTS.
- J. **SIDEWALKS**  
SIDEWALKS ARE REQUIRED ALONG STREETS DESIGNATED BY AND IN ACCORDANCE WITH SUBDIVISION REGULATIONS. REQUIRED SIDEWALKS SHALL BE CONSTRUCTED IN CONFORMANCE WITH CITY OF BROKEN ARROW ENGINEERING DESIGN STANDARDS. THE OWNER SHALL CONSTRUCT REQUIRED SIDEWALKS WITHIN RESERVE AREAS, COMMON AREAS AND ALONG ARTERIAL STREET FRONTAGES OF ABUTTING LOTS HAVING ACCESS ONTO MINOR STREETS. WHERE SIDEWALKS ARE NOT CONSTRUCTED BY THE OWNER, THE BUILDER OF EACH LOT SHALL CONSTRUCT THE REQUIRED SIDEWALK.
- K. **MINIMUM BUILDING SETBACKS AND YARDS**  
WHEREAS BLOCKS 1-6 AND RESERVES A, B & C OF THE VILLAGES AT SEVEN OAKS SOUTH WAS SUBMITTED AS A PLANNED UNIT DEVELOPMENT, DESIGNATED AS PUD \_\_\_\_ PURSUANT TO SECTION 3, ARTICLE VII OF THE ZONING ORDINANCE OF THE CITY OF BROKEN ARROW, OKLAHOMA, (ORDINANCE NO. 1560) AS AMENDED AND EXISTED ON MAY 2, 2005 (HEREINAFTER REFERRED TO AS THE "BROKEN ARROW ZONING ORDINANCE"), WHICH PUD - \_\_\_\_ WAS RECOMMENDED FOR APPROVAL BY THE PLANNING COMMISSION ON \_\_\_\_\_; AND WHEREAS THE PLANNED UNIT DEVELOPMENT PROVISIONS OF THE BROKEN ARROW ZONING CODE REQUIRE THE ESTABLISHMENT OF COVENANTS OF RECORD, INURING TO AND ENFORCEABLE BY THE CITY OF BROKEN ARROW, OKLAHOMA, SUFFICIENT TO ASSURE CONTINUED COMPLIANCE WITH THE APPROVED PLANNED UNIT DEVELOPMENT, AND WHEREAS, THE OWNER/DEVELOPER DESIRES TO ESTABLISH RESTRICTIONS FOR THE PURPOSE OF PROVIDING FOR AN ORDERLY DEVELOPMENT AND TO INURE ADEQUATE RESTRICTIONS FOR THE MUTUAL BENEFIT OF THE OWNER/DEVELOPER, ITS SUCCESSORS AND ASSIGNS, AND THE CITY OF BROKEN ARROW, OKLAHOMA; THEREFORE, THE OWNER/DEVELOPER DOES HEREBY IMPOSE THE FOLLOWING RESTRICTIONS AND COVENANTS WHICH SHALL BE COVENANTS RUNNING WITH THE LAND AND SHALL BE BIDDING UPON THE OWNER/DEVELOPER, ITS SUCCESSORS AND ASSIGNS, AND SHALL BE ENFORCEABLE AS HEREINAFTER SET FORTH. COVENANTS SET OUT IN SECTION II SHALL APPLY TO BLOCKS 1 THRU 6 AND RESERVES A, B & C ONLY.

SECTION II. PLANNED UNIT DEVELOPMENT RESTRICTIONS

- A. **PLANNED UNIT DEVELOPMENT RESTRICTIONS**  
WHEREAS BLOCKS 1-6 AND RESERVES A, B & C OF THE VILLAGES AT SEVEN OAKS SOUTH WAS SUBMITTED AS A PLANNED UNIT DEVELOPMENT, DESIGNATED AS PUD \_\_\_\_ PURSUANT TO SECTION 3, ARTICLE VII OF THE ZONING ORDINANCE OF THE CITY OF BROKEN ARROW, OKLAHOMA, (ORDINANCE NO. 1560) AS AMENDED AND EXISTED ON MAY 2, 2005 (HEREINAFTER REFERRED TO AS THE "BROKEN ARROW ZONING ORDINANCE"), WHICH PUD - \_\_\_\_ WAS RECOMMENDED FOR APPROVAL BY THE PLANNING COMMISSION ON \_\_\_\_\_; AND WHEREAS THE PLANNED UNIT DEVELOPMENT PROVISIONS OF THE BROKEN ARROW ZONING CODE REQUIRE THE ESTABLISHMENT OF COVENANTS OF RECORD, INURING TO AND ENFORCEABLE BY THE CITY OF BROKEN ARROW, OKLAHOMA, SUFFICIENT TO ASSURE CONTINUED COMPLIANCE WITH THE APPROVED PLANNED UNIT DEVELOPMENT, AND WHEREAS, THE OWNER/DEVELOPER DESIRES TO ESTABLISH RESTRICTIONS FOR THE PURPOSE OF PROVIDING FOR AN ORDERLY DEVELOPMENT AND TO INURE ADEQUATE RESTRICTIONS FOR THE MUTUAL BENEFIT OF THE OWNER/DEVELOPER, ITS SUCCESSORS AND ASSIGNS, AND THE CITY OF BROKEN ARROW, OKLAHOMA; THEREFORE, THE OWNER/DEVELOPER DOES HEREBY IMPOSE THE FOLLOWING RESTRICTIONS AND COVENANTS WHICH SHALL BE COVENANTS RUNNING WITH THE LAND AND SHALL BE BIDDING UPON THE OWNER/DEVELOPER, ITS SUCCESSORS AND ASSIGNS, AND SHALL BE ENFORCEABLE AS HEREINAFTER SET FORTH. COVENANTS SET OUT IN SECTION II SHALL APPLY TO BLOCKS 1 THRU 6 AND RESERVES A, B & C ONLY.

- B. **PERMITTED USES**  
SINGLE FAMILY DETACHED DWELLINGS
- C. **GROSS LAND AREA**  
11.34 ACRES FOR PUD- \_\_\_\_
- D. **MAXIMUM NUMBER OF DWELLING UNITS**  
47
- E. **MINIMUM LOT WIDTH**  
52 FEET
- F. **MINIMUM LOT AREA**  
6,200 SF
- G. **MAXIMUM BUILDING HEIGHT**  
PER RS-4 ZONING
- H. **YARD AND BUILDING SETBACKS**  
PER RS-4 ZONING
- I. **PRIVATE STREETS (RESERVE C)**  
ALL STREETS WITHIN THE PUD WILL BE PRIVATELY MAINTAINED BY THE HOMEOWNER'S ASSOCIATION. ALL STREETS SHALL BE CONSTRUCTED ACCORDING TO THE CITY OF BROKEN ARROW MINOR RESIDENTIAL PUBLIC STREET STANDARD AND WHOLLY CONTAINED WITHIN RESERVE 'C' WITH ONE EXCEPTION. SOUTH 12TH PLACE WILL BE ALLOWED TO EXCEED THE 900 MAXIMUM BLOCK LENGTH. STREETS SHALL BE DESIGNED IN ACCORDANCE WITH CITY OF BROKEN ARROW ENGINEERING DESIGN CRITERIA. STREETS SHALL BE GATED PROVIDED ALL SUCH GATES MEET THE ACCESS REQUIREMENTS OF THE CITY OF BROKEN ARROW FIRE MARSHAL. RESERVE AREAS 'C' SHALL BE CONVEYED TO THE HOMEOWNER'S ASSOCIATION WHICH SHALL BE RESPONSIBLE FOR THE MAINTENANCE OF ALL IMPROVEMENTS CONTAINED WITHIN THAT RESERVE.
- J. **LANDSCAPE AND SCREENING STANDARDS**  
LANDSCAPING AND SCREENING WILL BE PROVIDED ALONG NEW ORLEANS STREET AND SHALL CONFORM TO THE CITY OF BROKEN ARROW ZONING ORDINANCE 1930 AS IT PERTAINS TO RS-4 ZONING. FENCING PLANS SHALL BE PRESENTED TO AND APPROVED BY THE CITY OF BROKEN ARROW AT THE SAME TIME THE LANDSCAPE PLANS ARE SUBMITTED FOR REVIEW.

SECTION III. PRIVATE RESTRICTIONS

- A. **ARCHITECTURAL COMMITTEE**  
1. **PLAN REVIEW.** NO BUILDING, FENCE, WALL, OR EXTERIOR ANTENNA SHALL BE ERECTED, PLACED OR ALTERED (INCLUDING EXTERIOR PAINTING) ON ANY LOT UNTIL THE PLANS AND SPECIFICATIONS HAVE BEEN APPROVED IN WRITING BY THE OWNER/DEVELOPER OR ITS AUTHORIZED REPRESENTATIVES OR SUCCESSORS, WHICH ARE HERINAFTER REFERRED TO AS THE "ARCHITECTURAL COMMITTEE". FOR EACH BUILDING, THE REQUIRED PLANS AND SPECIFICATIONS SHALL BE SUBMITTED IN DUPLICATE AND INCLUDE A SITE PLAN, FLOOR PLAN, EXTERIOR ELEVATIONS, DRAINAGE AND GRADING PLANS, EXTERIOR MATERIALS AND COLOR SCHEME. IN THE EVENT THE ARCHITECTURAL COMMITTEE FAILS TO APPROVE OR DISAPPROVE PLANS AND SPECIFICATIONS SUBMITTED TO IT AS HEREIN REQUIRED WITHIN THIRTY (30) DAYS AFTER SUBMISSION, THE PLANS SO SUBMITTED SHALL BE DEEMED APPROVED. THE DEVELOPMENT AND USE OF THE SUBJECT LOT SHALL THEREAFTER BE IN SUBSTANTIAL COMPLIANCE WITH THE APPROVED PLANS OR APPROVED AMENDMENTS THERETO. IN THE EVENT NO SUIT TO ENJOIN THE ERECTION OF THE BUILDING OR STRUCTURE OR THE MAKING OF AN ALTERATION HAS BEEN COMMENCED PRIOR TO THE 30TH DAY FOLLOWING COMPLETION THEREOF, APPROVAL OF THE ARCHITECTURAL COMMITTEE SHALL NOT BE REQUIRED AND THIS COVENANT SHALL BE DEEMED TO HAVE BEEN FULLY COMPLIED WITH.  
2. **COMMITTEE PURPOSE.** THE ARCHITECTURAL COMMITTEE'S PURPOSE IS TO PROMOTE GOOD DESIGN AND COMPATIBILITY WITHIN THE SUBDIVISION AND IN ITS REVIEW OF PLANS OR DETERMINATION OF ANY WAIVER AS HEREINAFTER AUTHORIZED MAY TAKE INTO CONSIDERATION THE NATURE AND CHARACTER OF THE PROPOSED BUILDING OR STRUCTURE, THE MATERIALS OF WHICH IT IS TO BE BUILT, THE AVAILABILITY OF ALTERNATIVE MATERIALS, THE SITE UPON WHICH IT IS PROPOSED TO BE ERECTED AND THE HARMONY THEREOF WITH THE SURROUNDING AREA. THE ARCHITECTURAL COMMITTEE SHALL NOT BE LIABLE FOR ANY APPROVAL, DISAPPROVAL OR FAILURE TO APPROVE HEREUNDER, AND ITS APPROVAL OF BUILDING PLANS SHALL NOT CONSTITUTE A WARRANTY OR RESPONSIBILITY FOR BUILDING METHODS, MATERIALS, PROCEDURES, STRUCTURAL DESIGN, GRADING OR DRAINAGE OR CODE VIOLATIONS. THE APPROVAL OR FAILURE TO APPROVE BUILDING PLANS SHALL NOT BE DEEMED A WAIVER OF ANY RESTRICTION. NOTHING HEREIN CONTAINED SHALL BE DEEMED TO PREVENT ANY LOT OWNER IN THE SUBDIVISION FROM PROSECUTING ANY LEGAL ACTION RELATING TO IMPROVEMENTS WITHIN THE SUBDIVISION WHICH THEY WOULD OTHERWISE BE ENTITLED TO PROSECUTE.
3. **TRANSFER OF DUTIES.** THE POWERS AND DUTIES OF THE ARCHITECTURAL COMMITTEE SHALL, ON JANUARY 1, 2025, BE DEEMED TRANSFERRED TO THE SEVEN OAKS SOUTH HOMEOWNERS' ASSOCIATION, INC. (TO BE ESTABLISHED AS SET FORTH WITHIN SECTION III HEREOF), OR UPON WRITTEN ASSIGNMENT TO SAID HOMEOWNERS' ASSOCIATION BY THE ARCHITECTURAL COMMITTEE, WHICHEVER EVENT FIRST OCCURS, AND THEREAFTER THE FOREGOING POWERS AND DUTIES SHALL BE EXERCISED BY THE BOARD OF DIRECTORS OF THE ASSOCIATION.

- B. **USE**  
THE USE OF THE LOTS SHALL BE LIMITED TO DETACHED SINGLE-FAMILY RESIDENCES AND CUSTOMARY ACCESSORY USES. ONLY ONE RESIDENCE SHALL BE PERMITTED UPON A LOT.

THE VILLAGES AT SEVEN OAKS SOUTH

Case No. \_\_\_\_\_  
Development No. ##-###  
Sheet 2 of 3

# The Villages at Seven Oaks South

A SUBDIVISION IN THE CITY OF BROKEN ARROW, TULSA COUNTY, OKLAHOMA BEING A PART OF THE E/2 NW/4 OF SECTION TWENTY-FIVE (25), TOWNSHIP 18 NORTH, RANGE 14 EAST, OF THE INDIAN BASE AND MERIDIAN.

SEVEN OAKS SOUTH, LLC

EMAIL: ALAN @ AABENG.COM

THE OWNER/DEVELOPER HAS FORMED OR SHALL CAUSE TO BE FORMED AN ASSOCIATION OF THE OWNERS OF THE LOTS WITHIN THE VILLAGES AT SEVEN OAKS SOUTH (HEREINAFTER REFERRED TO AS THE "HOMEOWNERS' ASSOCIATION") TO BE ESTABLISHED IN ACCORDANCE WITH THE STATUTES OF THE STATE OF OKLAHOMA, AND TO BE FORMED FOR THE GENERAL PURPOSES OF MAINTAINING THE COMMON AREAS, INCLUDING BUT WITHOUT LIMITATION THE STORM WATER DETENTION FACILITIES AND RESERVE AREAS, AND ENHANCING THE VALUE, DESIRABILITY AND ATTRACTIVENESS OF ALL PHASES OF THE VILLAGES AT SEVEN OAKS SOUTH.

INVALIDATION OF ANY RESTRICTION SET FORTH HEREIN, OR ANY PART THEREOF, BY AN ORDER, JUDGMENT OR DECREE OF ANY COURT, OR OTHERWISE, SHALL NOT INVALIDATE OR AFFECT ANY OF THE OTHER RESTRICTIONS OR ANY PART THEREOF AS SET FORTH HEREIN, WHICH SHALL REMAIN IN FULL FORCE AND EFFECT.

NOTARY PUBLIC  
MY COMMISSION EXPIRES: NOVEMBER 20, 2019  
COMMISSION NUMBER: 11010522  
MY COMMISSION EXPIRES:  
COMMISSION NUMBER:





CONCEPTUAL IMPROVEMENTS

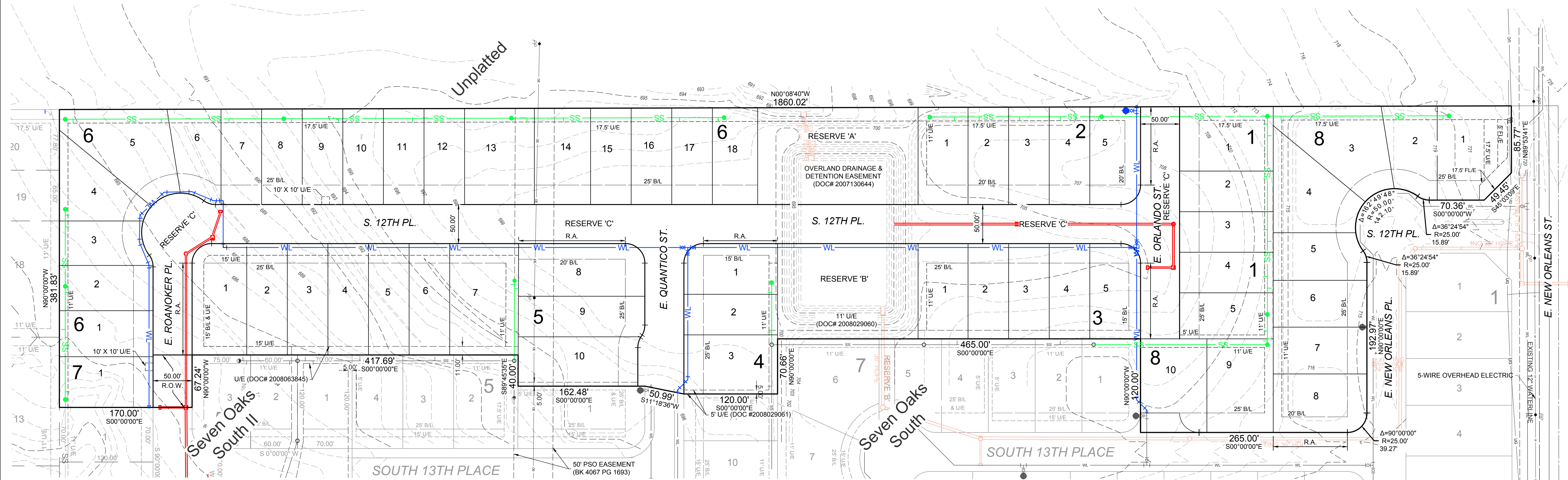
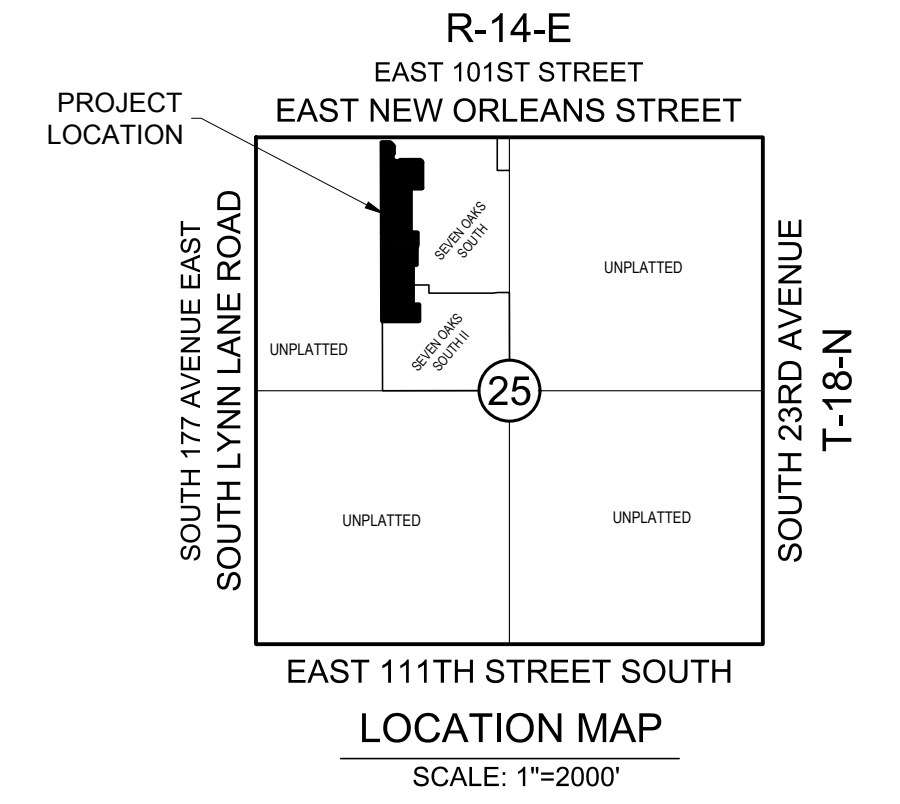
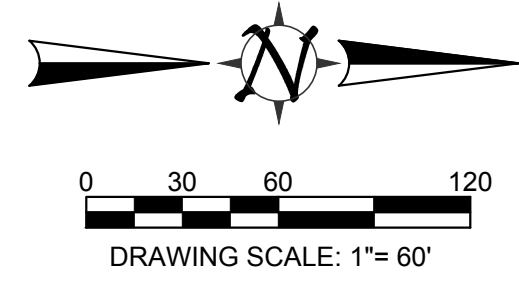
# The Villages at Seven Oaks South

PUD \_\_\_\_

A SUBDIVISION IN THE CITY OF BROKEN ARROW, TULSA COUNTY, OKLAHOMA BEING A PART OF THE E/2 NW/4 OF SECTION TWENTY-FIVE (25), TOWNSHIP 18 NORTH, RANGE 14 EAST, OF THE INDIAN BASE AND MERIDIAN.

**OWNER/DEVELOPER**  
SEVEN OAKS SOUTH, LLC  
1420 WEST KENOSHA  
BROKEN ARROW, OK 74012  
PHONE: 918-261-5200  
ATTN: CHUCK RAMSAY

**ENGINEER/SURVEYOR**  
AAB ENGINEERING LLC  
CERTIFICATE OF AUTHORIZATION NO. 6318, EXP. JUNE, 30, 2020  
PO BOX 2136  
SAND SPRINGS, OK 74063  
PHONE: 918.514.4283  
FAX: 918.514.4288  
EMAIL: ALAN@AABENG.COM



## CONTACTS

MUNICIPAL AUTHORITY  
CITY OF BROKEN ARROW  
210 SOUTH 1ST STREET  
BROKEN ARROW, OK 74012

### UTILITY CONTACTS

OKLAHOMA NATURAL GAS COMPANY 5848 EAST 16TH STREET TULSA, OK 74112 PHONE: 918.831.8293	AEP / PSO 212 EAST 6TH STREET TULSA, OK 74119 PHONE: 918.599.2351
WINDSTREAM TELECOM COMPANY 2300 EAST 1ST PLACE BROKEN ARROW, OK 74012 PHONE: 918.451.3427	COX COMMUNICATIONS 11811 EAST 51ST STREET TULSA, OK 74145 PHONE: 918.286.4658

## LEGEND

B/L.....	BUILDING LINE
LNA.....	LIMITS OF NO ACCESS
R.A.....	RESTRICTED ACCESS
U/E.....	UTILITY EASEMENT
F/E.....	FENCE EASEMENT
WL.....	PROPOSED WATER LINE
SS.....	PROPOSED SANITARY SEWER LINE
SS.....	EXISTING SANITARY SEWER LINE
SS.....	PROPOSED STORM SEWER LINE
SS.....	EXISTING STORM SEWER LINE

