

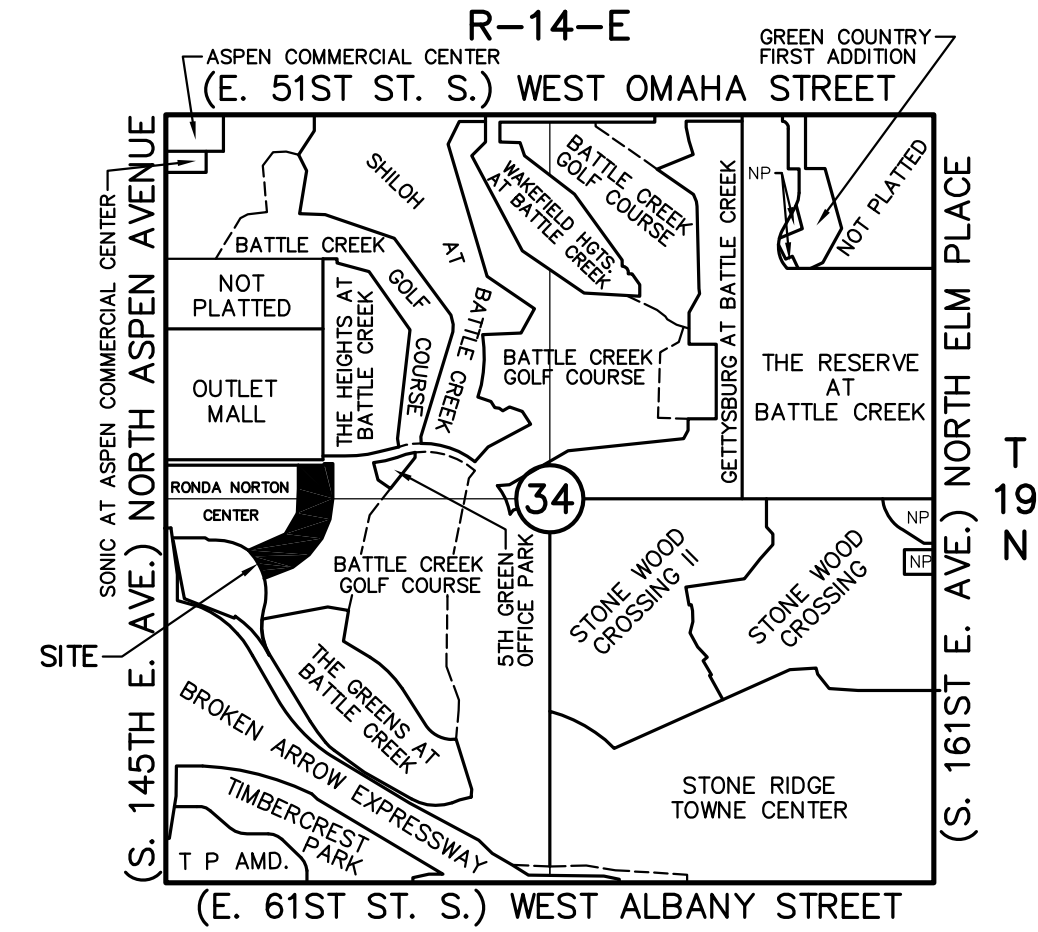
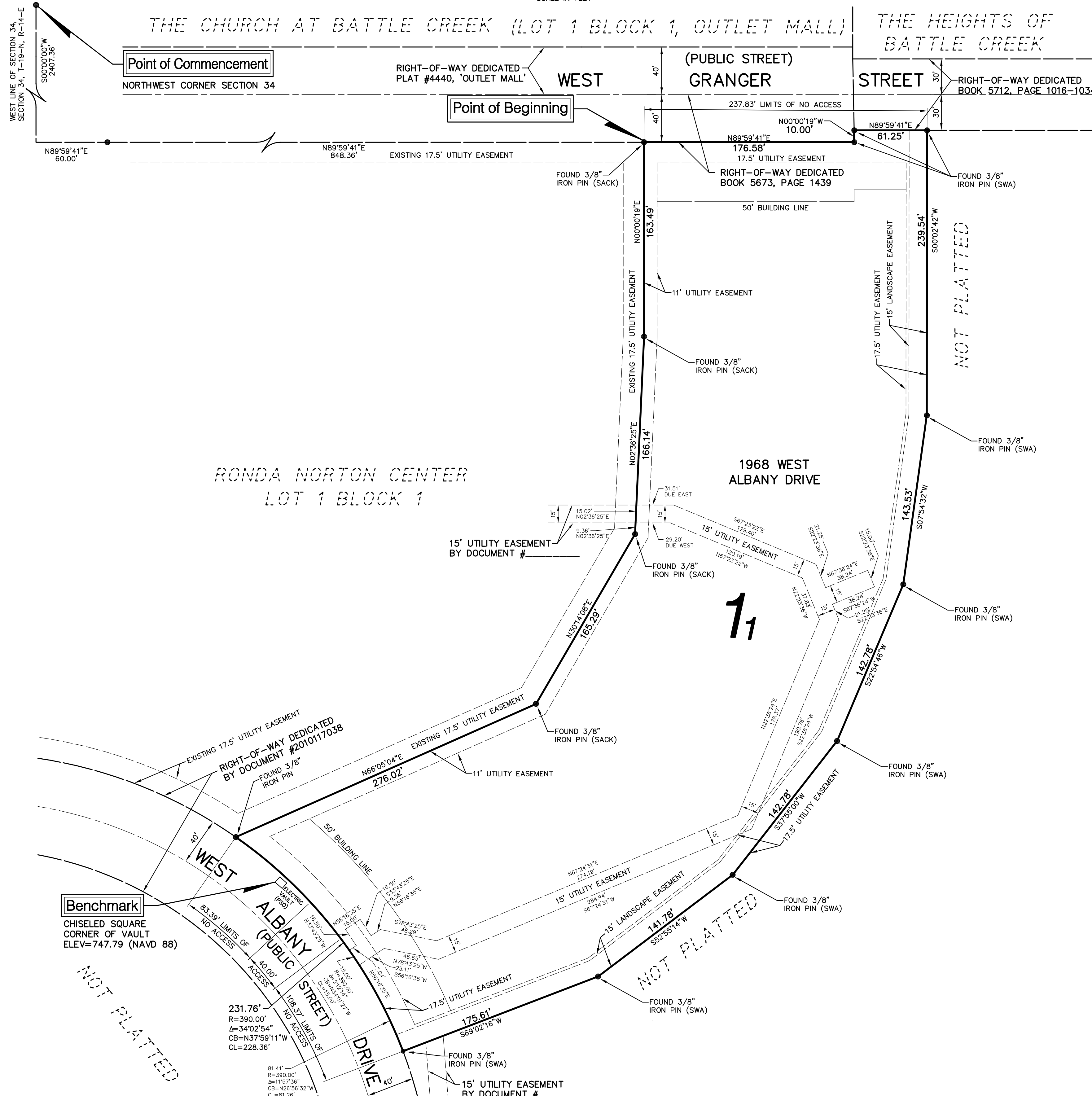
TREASURER'S STAMP
DO NOT USE THIS SPACE

PLAT NUMBER

APPROVED _____ by the City
Council of the City of Broken Arrow,
Oklahoma
Mayor _____
Attest: City Clerk _____

COUNTY CLERK STAMP
DO NOT USE THIS SPACE

'CONDITIONAL FINAL PLAT'
Ronda Norton Center II
AN ADDITION TO THE CITY OF BROKEN ARROW, TULSA COUNTY, OKLAHOMA
A SUBDIVISION OF PART OF THE NW/4 AND PART OF THE SW/4
OF
SECTION 34 T-19-N, R-14-E
Planned Unit Development Number 94S-1



Location Map

Owner
TAHOE PROPERTIES LLC
ATTN: JAMES C. NORTON
9809 SOUTH MEMORIAL DRIVE
TULSA, OKLAHOMA 74133
PHONE: (918) 250-6888

Engineer / Surveyor
SACK AND ASSOCIATES, INC.
3530 EAST 31ST STREET SOUTH, SUITE A
TULSA, OKLAHOMA 74135-1519
PHONE: (918) 592-4111
E-MAIL: SA@SACKANDASSOCIATES.COM
C.A. No. 1783

Subdivision Statistics
SUBDIVISION CONTAINS 1 LOT IN 1 BLOCK
BLOCK 1 CONTAINS 4.5517 ACRES (198,273 SF)

Monumentation
ALL CORNERS WERE SET USING A
3/8" IRON PIN WITH A YELLOW CAP
STAMPED 'SACK LS 1139', UNLESS
OTHERWISE NOTED.

Basis of Bearings
THE BEARINGS SHOWN HEREON ARE BASED ON
THE WEST LINE OF THE RECORDED PLAT OF
OUTLET MALL, PLAT NUMBER 4440, HAVING A
NON-ASTRONOMICAL BEARING OF DUE NORTH.

Legend
CB = CHORD BEARING
CL = CHORD LENGTH

Addresses
ADDRESSES SHOWN ON THIS PLAT ARE ACCURATE AT
THE TIME THE PLAT WAS FILED. ADDRESSES ARE
SUBJECT TO CHANGE AND SHOULD NEVER BE RELIED
ON IN PLACE OF THE LEGAL DESCRIPTION.

Note
'STORMWATER DETENTION ACCOMMODATIONS FOR THIS SITE
ARE PROVIDED IN ACCORDANCE WITH FEE-IN-LIEU OF
DETENTION DETERMINATION #DD-050917-08.'

Benchmark
CHISELED SQUARE
CORNER OF VAULT
ELEV=747.79 (NAVD 88)

