

Geographic Technologies Group

7815 S. Elm Place

JUN 05 2017

188 ft



OWNER
 MERRY CHURCH Baptist Church
 7515 S Elm Pl
 Broken Arrow, OK 74011
 (918) 426-1558

PARKING DATA

- Existing: 1200 sq ft
- Required: 1300 sq ft
- Notes: 1. No parking required for 1st floor retail
- 2. No parking required for 2nd floor retail
- 3. No parking required for 3rd floor retail
- 4. No parking required for 4th floor retail
- 5. No parking required for 5th floor retail
- 6. No parking required for 6th floor retail
- 7. No parking required for 7th floor retail
- 8. No parking required for 8th floor retail
- 9. No parking required for 9th floor retail
- 10. No parking required for 10th floor retail
- 11. No parking required for 11th floor retail
- 12. No parking required for 12th floor retail
- 13. No parking required for 13th floor retail
- 14. No parking required for 14th floor retail
- 15. No parking required for 15th floor retail
- 16. No parking required for 16th floor retail
- 17. No parking required for 17th floor retail
- 18. No parking required for 18th floor retail
- 19. No parking required for 19th floor retail
- 20. No parking required for 20th floor retail

SITE DATA

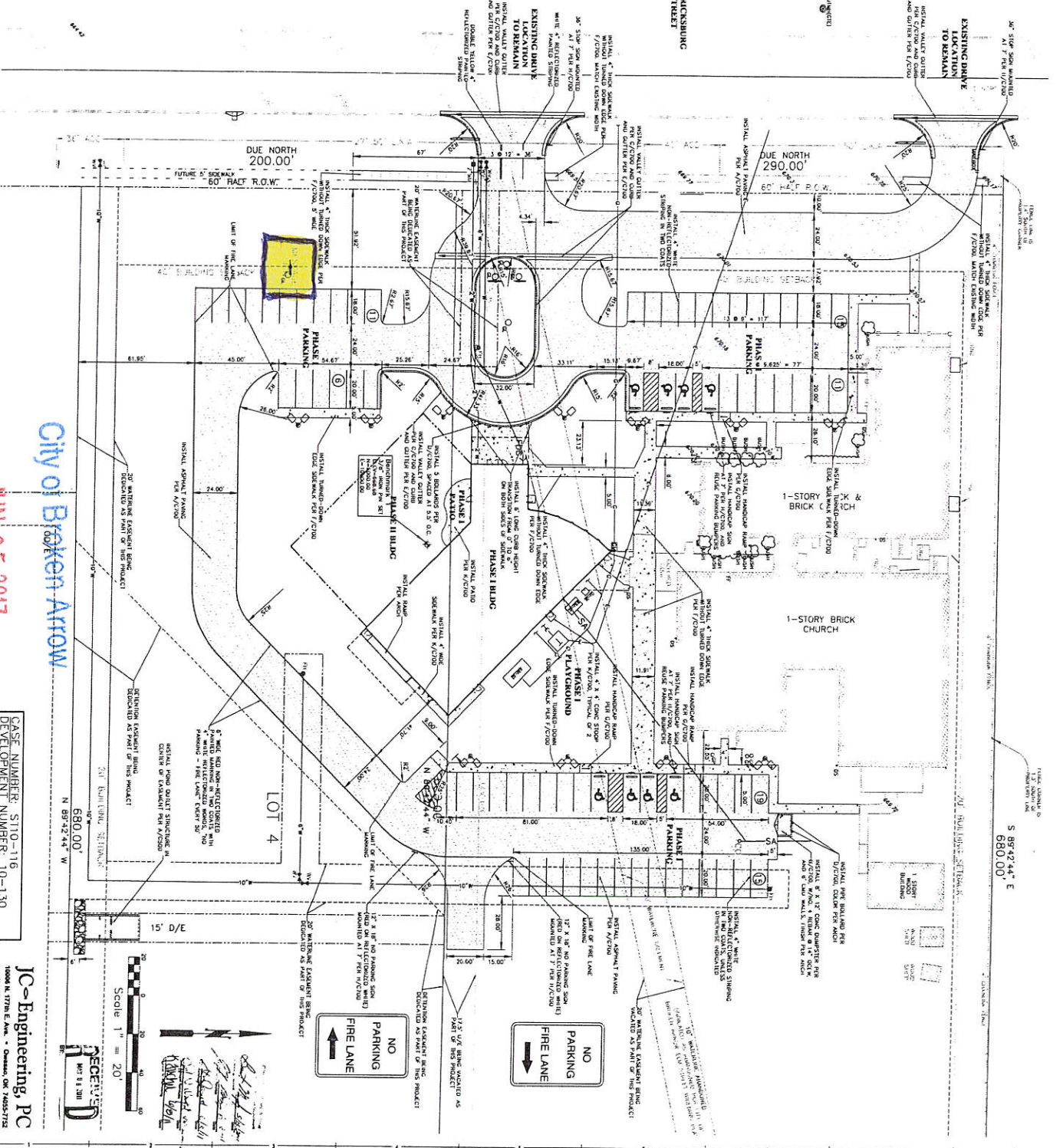
- LOT: 4
- OWNER: MERRY CHURCH
- PROJECT: 175
- DATE: 05/23/17
- SCALE: 1" = 20'
- DRAWN: JAMES B. ARCH

IMPERVIOUS AREA

Phase 1: 20,000 sq ft
 Phase 2: 20,000 sq ft

GENERAL NOTES

1. CONSTRUCTION SHALL BE IN ACCORDANCE WITH ALL CITY ORDINANCES AND REGULATIONS.
2. THE CONTRACTOR SHALL BE RESPONSIBLE FOR OBTAINING ALL NECESSARY PERMITS AND APPROVALS FROM THE CITY OF BROKEN ARROW.
3. THE CONTRACTOR SHALL BE RESPONSIBLE FOR OBTAINING ALL NECESSARY PERMITS AND APPROVALS FROM THE CITY OF BROKEN ARROW.
4. THE CONTRACTOR SHALL BE RESPONSIBLE FOR OBTAINING ALL NECESSARY PERMITS AND APPROVALS FROM THE CITY OF BROKEN ARROW.



City of Broken Arrow

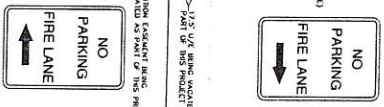
JUN 05 2017

CASE NUMBER: ST10-116
 DEVELOPMENT NUMBER: 10-130
 DEFINITION NUMBER: DD-101310-19

10000 N. 17TH E. AVE., Broken Arrow, OK 74012
 (918) 958-5211
 J.C. Engineering, PC

Scale 1" = 20'

(Handwritten notes and signatures)



100% CONSTRUCTION DOCUMENTS

INDIAN SPRINGS BAPTIST CHURCH

7615 S Elm Pl. Broken Arrow OK, 74011



C40