

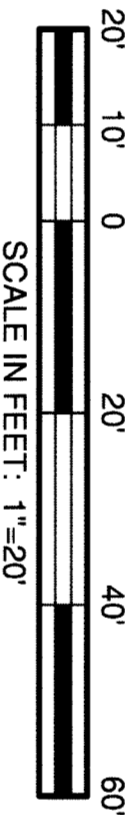
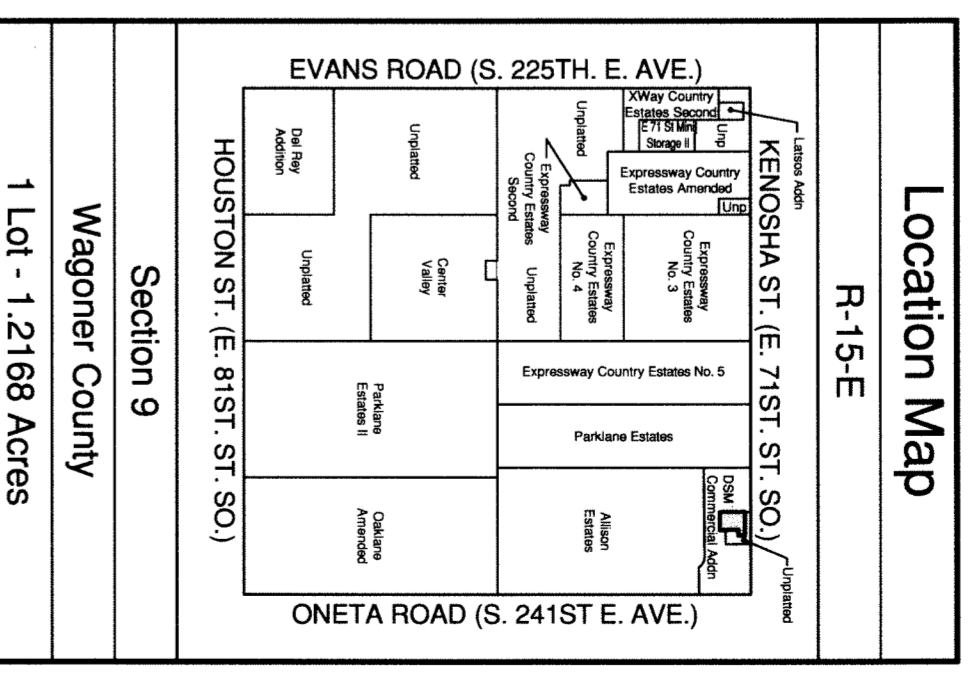
Dollar General at Kenosha & Oneta Centre

I, the undersigned, the duly qualified and acting county Treasurer, of Wagoner County, Wagoner, Oklahoma, hereby certify that, according to the plat tax rolls the taxes on the above description are paid.

Dana Patten, County Treasurer
 Dana Patten, County Treasurer



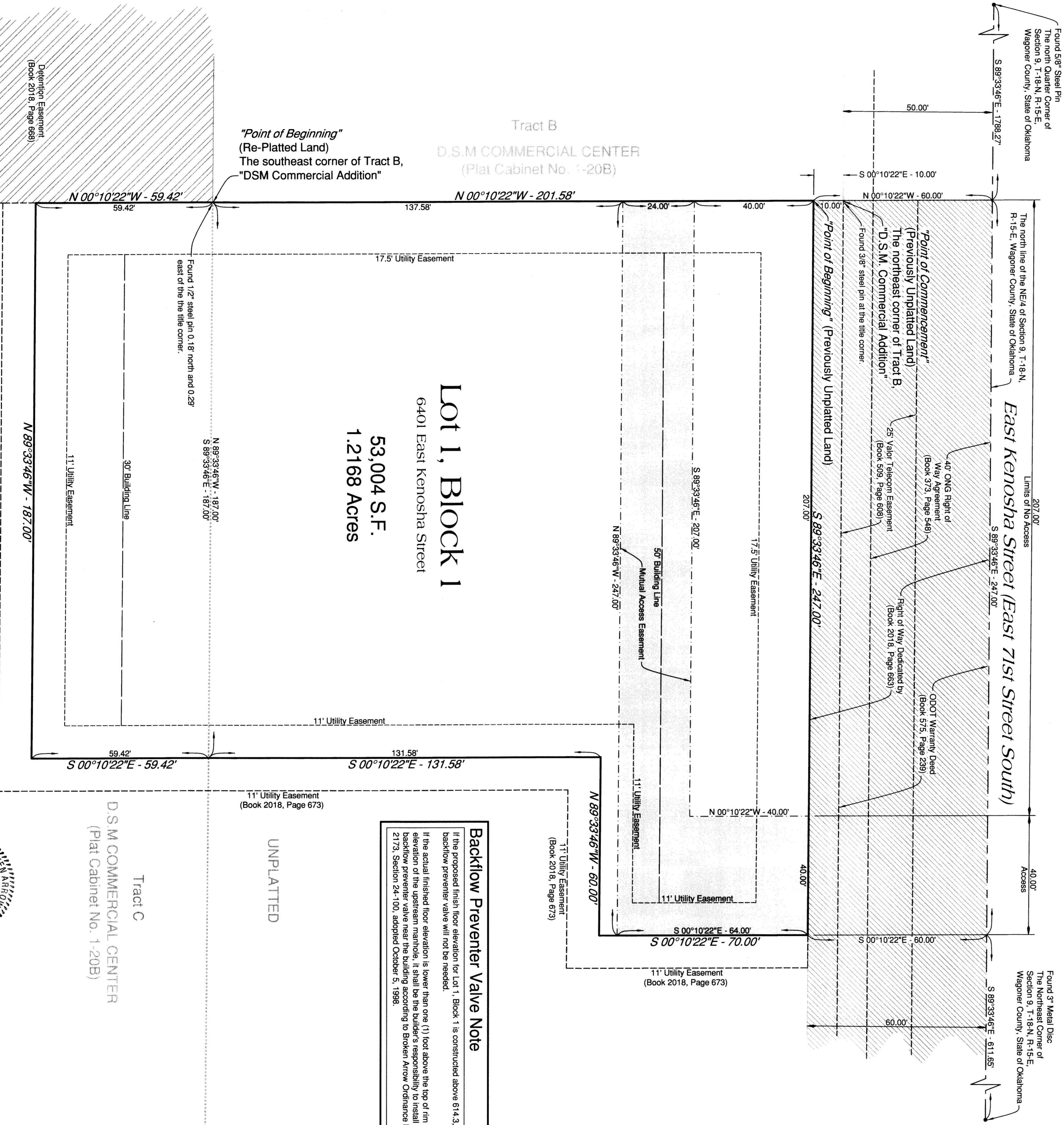
A re-subdivision of a portion of Tract C, "D.S.M. Commercial Addition", an addition to the City of Broken Arrow, and a part of the NE/4 of the NE/4 of Section 9, T-18-N, R-15-E of the Indian Meridian, Wagoner County, State of Oklahoma



OWNER
 First Priority Bank
 10632 South Memorial Drive
 Tulsa, OK 74133
 918.389.2424

ENGINEER / SURVEYOR
 Tulsa Engineering & Planning Associates, Inc.
 6737 South 89th East Avenue
 Tulsa, Oklahoma 74133
 918.252.9821
 jpe@tulaeng.com
 CERTIFICATE OF AUTHORIZATION NO. 931
 RENEWAL DATE: JUNE 30, 2013

- Legend**
- = Right-of-Way, Dedicated by Separate Instrument
 - = Mutual Access Easement
 - = Detention Easement by Separate Instrument
- Monument Notes**
- A 5/8" x 1/8" aluminum bar with a yellow plastic cap stamped "RLS 1253" to be set at all plat boundary corners, prior to recordation unless noted otherwise.
- Basis of Bearings**
- The non-astronomic bearings for this plat are based on a direct bearing of S 89°33'46" (and thereon) from the D.S.M. Commercial Addition, a subdivision in the City of Broken Arrow, Wagoner County, State of Oklahoma, according to the official recorded plat thereof, as filed in Plat Cabinet 1-208 in the Wagoner County Clerk's office.
- Benchmark**
- Top of a Metal Disk at the intersection of East Kenosha Street and North Oneta Road (Section Corner)
 Elevation = 616.15 NAVD 1988
- Notes**
- Water to be supplied by the City of Broken Arrow.
 - Sewerage to be received by the City of Broken Arrow.
- Stormwater Detention**
- Stormwater detention accommodations for this site are provided in accordance with Fee-In-Lieu of Detention Determination No. DD-049012-05.
- Lot Addresses**
- Addresses shown on this plat were provided by the City of Broken Arrow Engineering Department. Addresses are subject to change and should not be relied upon in place of the legal description.

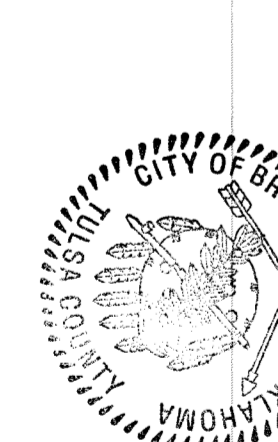


Backflow Preventer Valve Note

If the proposed finish floor elevation for Lot 1, Block 1 is constructed above 814.3, a backflow preventer valve will not be needed.

If the actual finished floor elevation is lower than one (1) foot above the top of firm elevation of the upstream manhole, it shall be the builder's responsibility to install a backflow preventer valve near the building according to Broken Arrow Ordinance No. 2173, Section 24-100, adopted October 5, 1998.

D.S.M. COMMERCIAL CENTER
 (Plat Cabinet No. 1-20B)



APPROVED [Signature] by the City Council of the City of Broken Arrow
 Dana Patten
 Mayor
 Henry E. Boyer
 Attest: City Clerk

Certified True Copy,
 LORI HENDRICKS, COUNTY CLERK
 Wagoner County, Okla.
 8/15/2012