



P.U.D. 161 Bricktown West Extended

A SUBDIVISION IN THE CITY OF BROKEN ARROW, TULSA COUNTY, OKLAHOMA
 BEING A REPLAT OF LOT ONE (1) BLOCK TWO (2), BRICKTOWN WEST (PLAT #5796) AND A
 SUBDIVISION OF A PART OF THE SOUTHWEST QUARTER OF THE SOUTHWEST QUARTER (SW/4 SW/4)
 OF SECTION FOUR (4), TOWNSHIP 18 NORTH, RANGE 14 EAST OF THE INDIAN BASE AND MERIDIAN.

Owner/Developer
 BRICKTOWN WEST, L.L.C.
 9708 EAST 55th PLACE
 TULSA, OKLAHOMA 74146
 (918) 663-6300
 MANAGER: MR. DARRELL G. JENKINS

Engineer/Surveyor
 HALL, ROSENBAUM, ALMON & ASSOCIATES, INC
 1913 WEST TACOMA, SUITE-C
 BROKEN ARROW, OKLAHOMA 74012-1472
 PHONE: (918) 258-3737
 FAX: (918) 258-2554
 C.A.#3643 EXPIRES JUNE 30, 2007

Legend

- B/L BUILDING LINE
- U/E UTILITY EASEMENT
- FL/E FENCE & LANDSCAPE EASEMENT
- MAE MUTUAL ACCESS EASEMENT
- R/W RIGHT OF WAY
- LNA LIMITS OF NO ACCESS
- POB POINT OF BEGINNING
- TCM TRAFFIC CONTROL MEDIAN

PLAT No.

5907

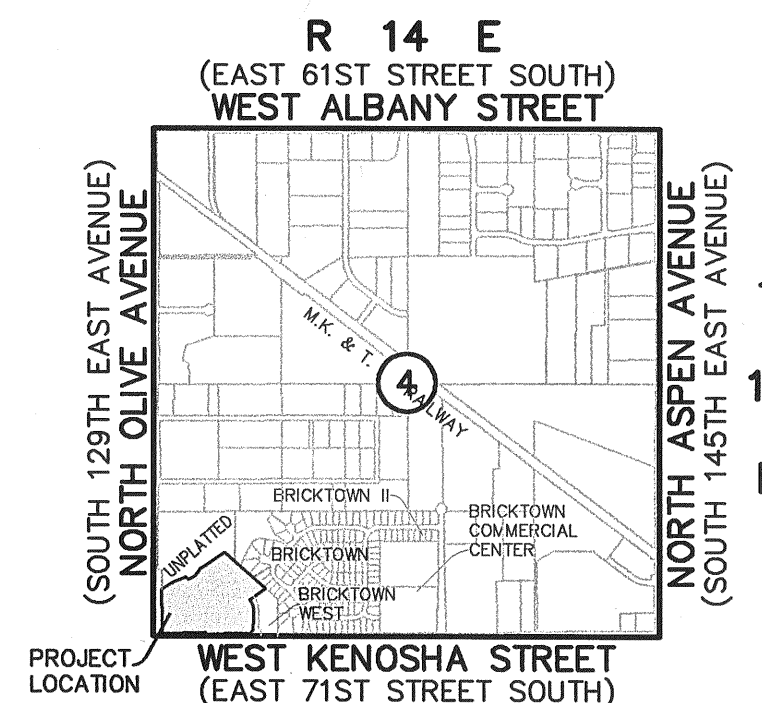
STORMWATER DETENTION ACCOMMODATIONS FOR THIS SITE ARE PROVIDED BY THE ONSITE DETENTION FACILITY AS SHOWN IN THE "NO EXCEPTIONS TAKEN" ENGINEERING PLANS IN ACCORDANCE WITH FEE-IN-LIEU OF DETENTION DETERMINATION #DD-122903-76.

Backflow Preventer Valve Table

BLOCK	LOTS	FINISH FLOOR ELEVATION	UPSTREAM MANHOLE	TOP OF RIM ELEVATION
1	1	697.00	C	685.37
1	2	698.50	5	696.75
1	3	701.00	A	699.58
2	1	697.00	D	692.40
2	2	698.00	LH-a	695.95
2	3	700.00	2	696.14

IF THE ACTUAL FINISH FLOOR ELEVATION IS LOWER THAN ONE (1) FOOT ABOVE THE TOP OF RIM ELEVATION OF THE UPSTREAM MANHOLE, IT SHALL BE THE BUILDER'S RESPONSIBILITY TO INSTALL A BACKFLOW PREVENTER VALVE NEAR THE BUILDING ACCORDING TO BROKEN ARROW ORDINANCE NO. 1777, SECTION 24-100, ADOPTED MAY 17, 1993.

* REQUIRES BACKFLOW PREVENTER VALVE.



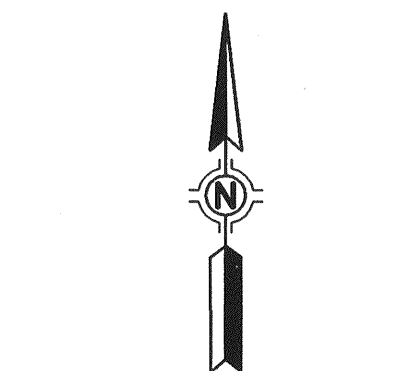
Location Map

SCALE: 1"=200'

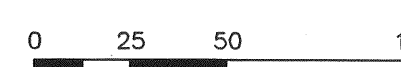
Subdivision Contains Six (6) Lots
 in Two (2) Blocks

Block 1 contains 3 lots
 Block 2 contains 3 lots

630,835.83 SF / 14.48 Acres



Scale: 1"=50'



Basis of Bearing

PLATTED BEARING OF S 89°23'04" W
 ALONG THE SOUTH LINE OF "BRICKTOWN"
 AN ADDITION TO THE CITY OF BROKEN
 ARROW, TULSA COUNTY, STATE OF
 OKLAHOMA (PLAT NO. 5231)

Benchmark

ADS 3" ALUMINUM CAP-FLUSH-SET IN
 CONCRETE POST-STAMPED "BA38", SET
 ON THE NORTH SIDE OF ALBANY AND
 EAST END OF EXPRESSWAY OVERPASS
 ELEVATION = 776.99 (NGVD 1929)

Notes

ADDRESSES SHOWN ON THIS PLAT WERE
 ACCURATE AT THE TIME THIS PLAT WAS
 FILED. ADDRESSES ARE SUBJECT TO
 CHANGE AND SHOULD NEVER BE RELIED
 ON IN PLACE OF LEGAL DESCRIPTION.

ALL WATER AND SANITARY SEWER
 SERVICES WILL BE SUPPLIED AND
 MAINTAINED BY THE CITY OF BROKEN
 ARROW.

Monumentation

ALL CORNERS SHOWN HEREON WERE
 SET USING A 3/8" X 18" STEEL PIN WITH
 A PLASTIC CAP STAMPED "PLS 1283" AT
 ALL CORNERS.

APPROVED 8-1-05 by the City
 Council of the City of Broken Arrow,
 Oklahoma.
Richard Carter
 Mayor
Dennis C. Sager
 Attest: City Clerk 10-4-05
 10-3-05

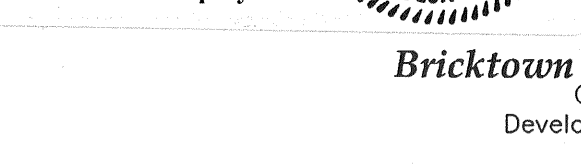
STATE OF OKLAHOMA }
 COUNTY OF TULSA }
 I, Earlene Wilson, Tulsa County Clerk, in and for the
 County and State above named, do hereby certify that
 the foregoing is a true and correct copy of a like instrument
 now on file in my office.
 Dated the 4th day of October, 2005
 EARLENE WILSON, Tulsa County Clerk
Jessie Cullison
 Deputy

CERTIFICATE

I hereby certify that all real estate taxes involved in
 this plat have been paid as reflected by the current tax
 rolls. Security as required has been provided in the
 amount of \$ 3,747.00 per trust receipt no.
 to be applied to 20 taxes. This
 certificate is NOT to be construed as payment of
 20 taxes in full but is given in order that this plat
 may be filed on record. 20 taxes have been paid
 the amount of the security deposit.

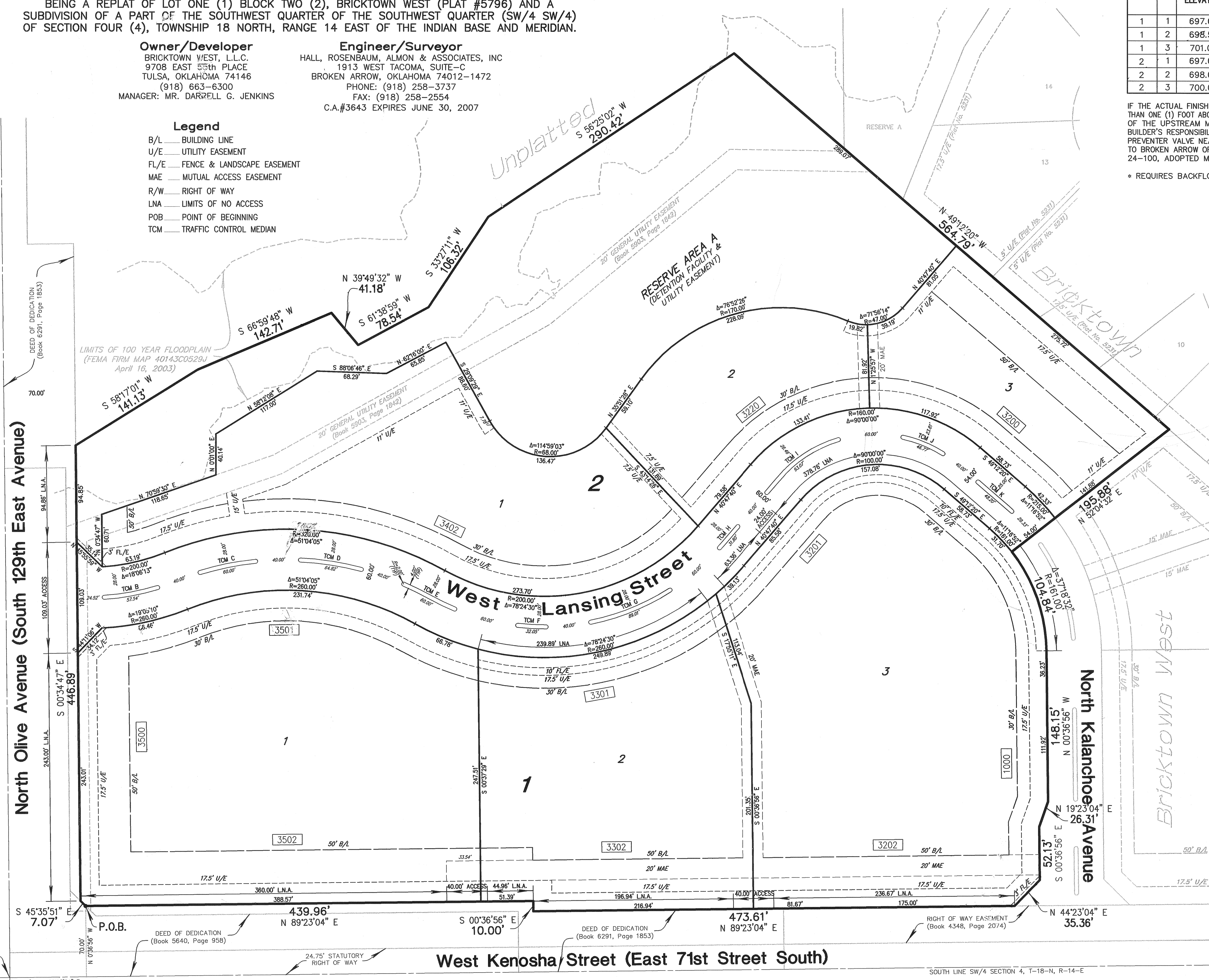
Dated 04-Oct-05

Dennis Semler
 Tulsa County Treasurer
 Deputy



Bricktown West Extended
 Case No. PT05-115
 Development No. 05-146
 Sheet 1 of 2

Date Prepared: September 19, 2005



POINT OF COMMENCEMENT
 FOUND 3" DISK
 SW CORNER OF SECTION 4,
 T-18-N, R-14-E, TULSA
 COUNTY, OKLAHOMA

DEED OF DEDICATION
 (Book 5640, Page 958)

DEED OF DEDICATION
 (Book 6291, Page 1853)

RIGHT OF WAY EASEMENT
 (Book 4348, Page 2074)

West Kenosha Street (East 71st Street South)

SOUTH LINE SW/4 SECTION 4, T-18-N, R-14-E