

Legend

- B/L BUILDING LINE
FL/E FENCE AND LANDSCAPE EASEMENT
LMA LIMITS OF NO ADDRESS
R/W RIGHT OF WAY
U/E UTILITY EASEMENT
STREET ADDRESS
CURVE/LINE TABLE CALLOUT

Seven Oaks South II

A SUBDIVISION IN THE CITY OF BROKEN ARROW, TULSA COUNTY, OKLAHOMA BEING A PART OF THE E/2 NW/4 OF SECTION TWENTY-FIVE (25), TOWNSHIP 18 NORTH, RANGE 14 EAST, OF THE INDIAN BASE AND MERIDIAN.



Basis of Bearings

ASSUMED BEARING OF S 89°53'41" W ALONG THE NORTH LINE OF THE NORTHWEST QUARTER (NW/4) OF SECTION 25, TOWNSHIP 18 NORTH, RANGE 14 EAST OF THE INDIAN BASE AND MERIDIAN.

Monumentation

ALL CORNERS SHOWN HEREON WERE SET USING A 3/8" X 18" STEEL PIN WITH A PLASTIC CAP STAMPED 'TULS 1285' AT ALL CORNERS.

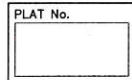
Owner/Developer SEVEN OAKS SOUTH, LLC 6314 EAST 26TH STREET TULSA, OKLAHOMA 74137 (918) 261-5200 MR. CLUCK RAMSAY

Engineer/Surveyor HROADK, INC. 1913 WEST TACOMA, SUITE-A BROKEN ARROW, OKLAHOMA 74012 PHONE: (918) 258-3737 FAX: (918) 258-2554 C.A.#3643 EXPIRES JUNE 30, 2009

Benchmark

3" ALUMINUM CAP-FLUSH-SET IN CONC-STAMPED 'TUL 4', SET WEST OF 23RD STREET AND APPROX. 0.10 MILES NORTH EAST FLORENCE STREET, ELEV. = 631.40 (NOVD 1929)

STORMWATER DETENTION ACCOMMODATIONS FOR THIS SITE ARE PROVIDED IN ACCORDANCE WITH THE RULES OF DETENTION DETERMINATION #200-207247

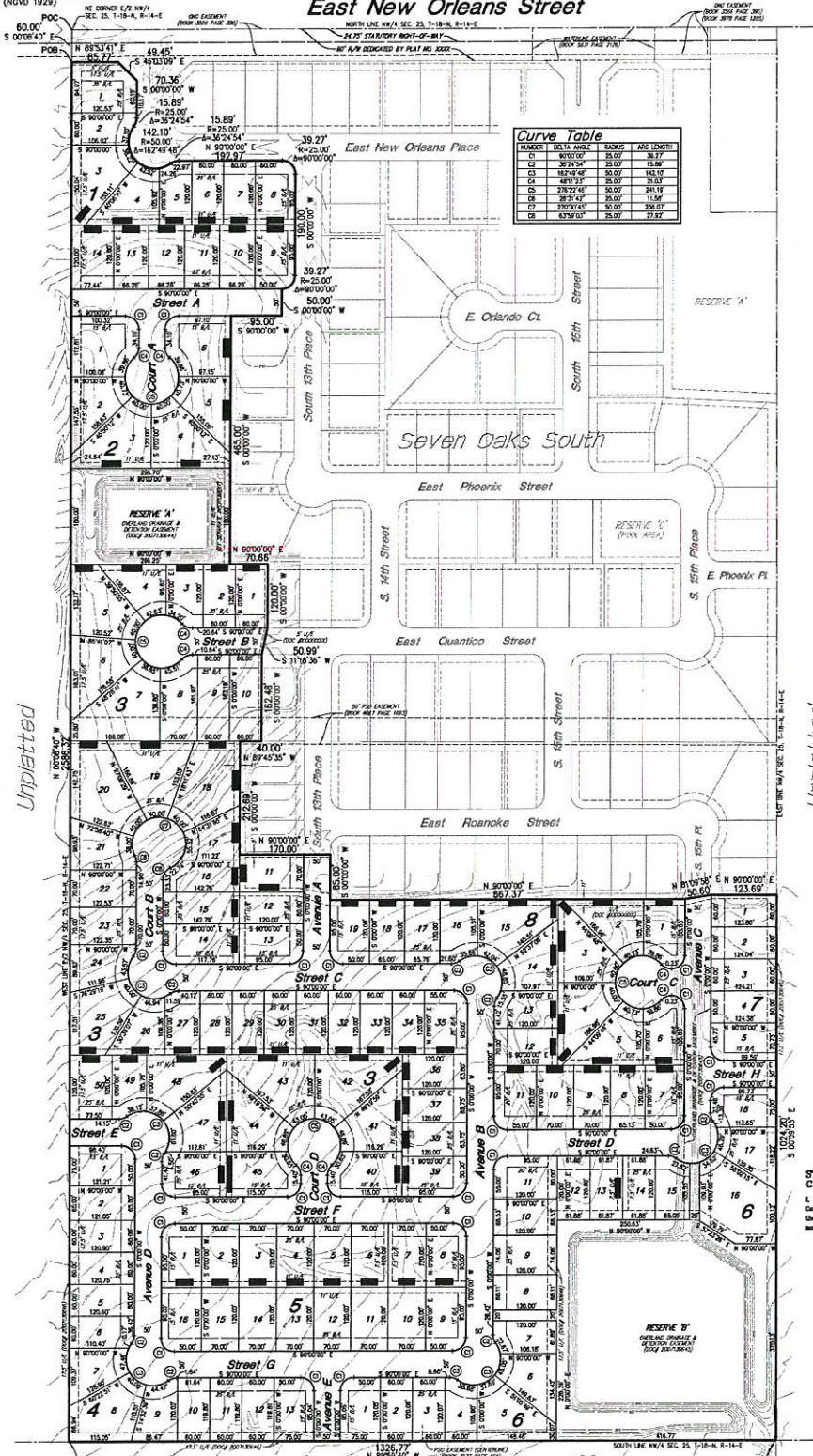


Location Map

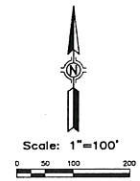
Scale: 1"=200'

- Subdivision Contains One Hundred & Forty-One (141) Lots in Eight (8) Blocks and Two (2) Reserve Areas
Block 1 14
Block 2 5
Block 3 50
Block 4 15
Block 5 16
Block 6 18
Block 7 5
Block 8 19

East New Orleans Street



Curve Table with columns for NUMBER, BEARING, RADIUS, and ARC LENGTH. Lists curves C1 through C7 with their respective measurements.



Notes

ALL STREET RIGHT-OF-WAY SHALL BE DEDICATED AS PUBLIC STREETS BY THIS PLAT. ADDRESSES SHOWN ON THIS PLAT WERE ACCURATE AT THE TIME THIS PLAT WAS FILED. ADDRESSES ARE SUBJECT TO CHANGE AND SHOULD NEVER BE RELIED ON IN PLACE OF LEGAL DESCRIPTION. ALL WATER AND SANITARY SEWER SERVICES WILL BE SUPPLIED AND MAINTAINED BY THE CITY OF BROKEN ARROW.

FINISHED FLOOR ELEVATION SHALL BE 1'-0" ABOVE FINISHED PAD ELEVATION

Backflow Preventer Valve Table with columns for BLOCK, LOT, FLOOR, and MANHOLE ELEVATION. Lists lot numbers and their corresponding elevations for backflow prevention valves.

IF THE ACTUAL FINISH FLOOR ELEVATION IS LOWER THAN ONE (1) FOOT ABOVE THE TOP OF FIN ELEVATION OF THE UPSTREAM MANHOLE, IT SHALL BE THE BUYER'S RESPONSIBILITY TO INSTALL A BACKFLOW PREVENTER VALVE NEAR THE BUILDING ACCORDING TO BROKEN ARROW ORDINANCE NO. 1777, SECTION 34-150, ADOPTED MAY 17, 1995. *REQUIRES BACKFLOW PREVENTER VALVE.

STATE OF OKLAHOMA)) COUNTY OF TULSA

I, Barbara Wilson, Tulsa County Clerk, do hereby certify that the foregoing is a true and correct copy of a plat as the same now on file in my office.

APPROVED by the City Council of the City of Broken Arrow, Oklahoma. Mayor Attest: City Clerk

County Treasurer Stamp area with fields for Date and County Treasurer name.