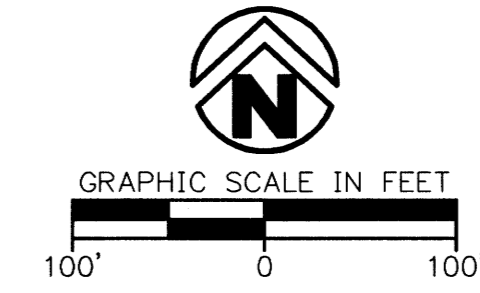


TIGER HILL PLAZA

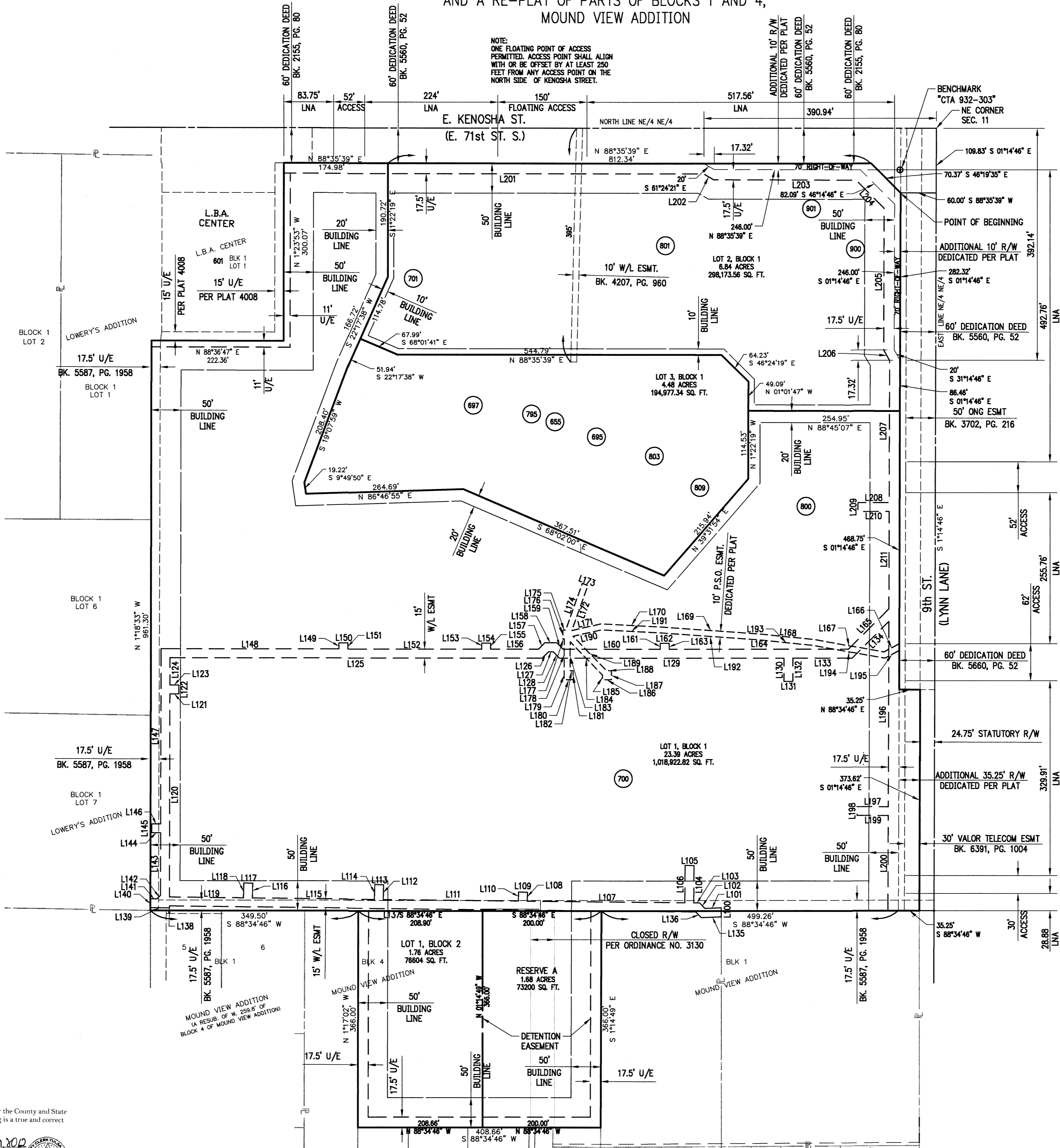
A PART OF THE NE/4 NE/4 OF SECTION 11, TOWNSHIP 18 NORTH, RANGE 14 EAST
 BROKEN ARROW, TULSA COUNTY, OKLAHOMA
 A RE-PLAT OF HILLSIDE PARK, PUD 205B
 AND A RE-PLAT OF PARTS OF BLOCKS 1 AND 4,
 MOUND VIEW ADDITION



220 E. 8th Street
 Tulsa, Oklahoma 74119
Crafton Tull
 architecture | engineering | surveying
 918.584.0347 | 918.584.3783
 www.craftontul.com

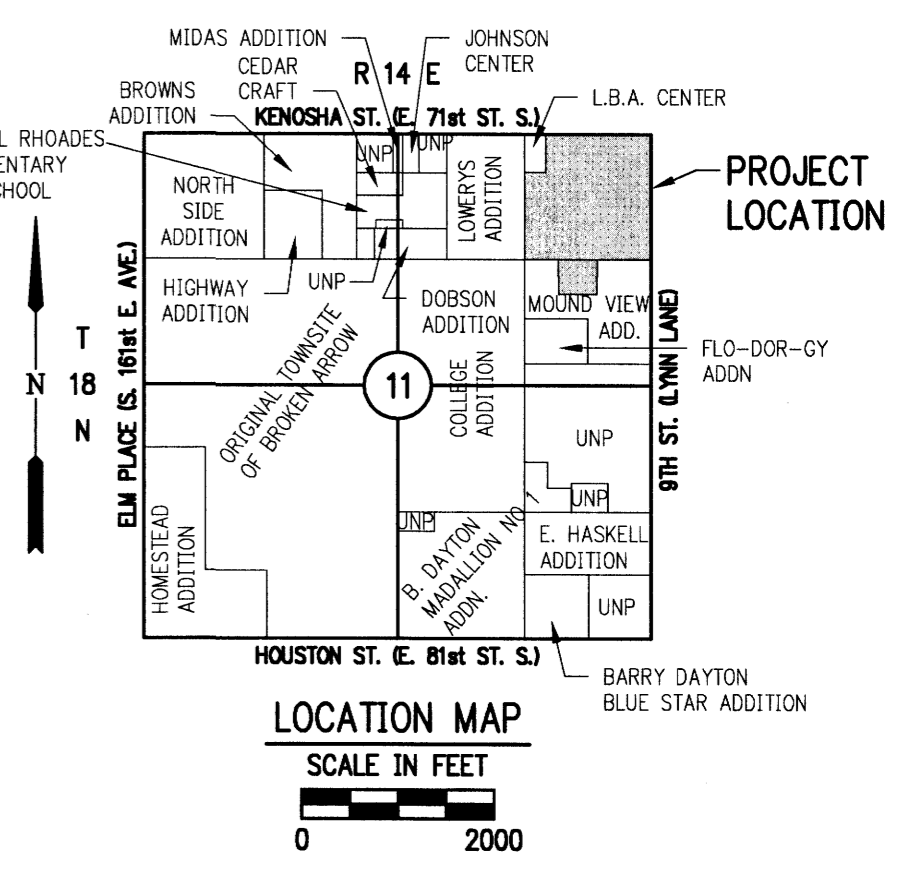
CERTIFICATE OF AUTHORIZATION
 CA 973 (PE/AS) EXPIRES 6/30/2012

NUMBER	BEARING	DISTANCE	NUMBER	BEARING	DISTANCE
L100	N 01°25'17" W	15.007	L166	S 60°24'06" W	29.105
L101	S 86°46'59" W	27.415	L167	N 81°14'22" W	118.598
L102	N 46°25'17" W	12.841	L168	N 85°32'17" W	92.814
L103	S 89°09'48" W	9.773	L169	N 87°17'00" W	164.705
L104	N 00°50'12" E	62.500	L170	N 88°24'36" W	102.015
L105	S 89°09'48" W	15.000	L171	S 75°45'06" W	50.569
L106	S 00°50'12" E	62.500	L172	N 18°03'12" E	80.863
L107	S 89°09'48" W	264.494	L173	N 71°56'48" W	10.000
L108	N 00°35'16" W	15.000	L174	S 18°03'12" W	83.780
L109	S 89°09'48" W	15.000	L175	S 88°35'39" W	4.835
L110	S 00°35'16" E	15.000	L176	S 01°24'21" E	15.000
L111	S 89°09'48" W	227.293	L177	N 88°35'39" E	2.485
L112	N 00°35'16" W	24.999	L178	S 01°17'05" E	53.193
L113	S 89°24'44" W	15.000	L179	S 01°24'21" E	15.000
L114	S 00°35'16" E	25.064	L180	N 88°35'39" E	15.000
L115	S 89°09'48" W	204.928	L181	N 01°24'21" W	15.000
L116	N 00°35'16" W	25.000	L182	S 88°35'39" W	5.000
L117	S 89°24'44" W	15.000	L183	N 01°17'05" W	48.436
L118	S 00°35'16" E	25.065	L184	S 45°38'00" E	77.599
L119	S 89°09'48" W	124.642	L185	S 01°24'21" E	7.831
L120	N 01°18'32" W	343.294	L186	N 88°35'39" E	15.000
L121	N 88°41'28" W	15.000	L187	N 01°24'24" W	15.000
L122	N 01°18'32" W	15.000	L188	S 88°35'39" W	8.022
L123	S 88°41'28" W	15.000	L189	N 45°38'00" W	80.696
L124	N 01°18'32" W	45.727	L190	N 75°45'06" E	49.349
L125	N 88°34'43" E	625.920	L191	S 88°24'36" E	100.525
L126	N 43°34'43" E	15.085	L192	S 87°17'00" E	164.455
L127	N 88°34'43" E	7.787	L193	S 85°32'17" E	92.286
L128	S 46°25'17" E	15.085	L194	S 81°14'22" E	121.702
L129	N 88°34'43" E	377.245	L195	N 60°24'06" E	27.187
L130	S 01°34'11" E	39.000	L196	S 01°14'46" E	312.355
L131	N 88°34'43" E	15.000	L197	S 88°35'39" W	52.500
L132	N 01°34'11" W	39.000	L198	S 01°14'46" E	15.000
L133	N 88°34'43" E	99.916	L199	N 88°35'39" E	52.500
L134	N 43°34'43" E	86.835	L200	S 01°14'46" E	160.508
L135	S 86°46'59" W	33.435	L201	N 88°35'39" E	705.733
L136	N 46°25'17" W	13.207	L202	S 61°24'21" E	19.881
L137	S 89°09'48" W	884.883	L203	N 88°35'39" E	238.914
L138	S 01°18'32" E	3.344	L204	S 46°14'46" E	67.371
L139	S 89°04'21" W	32.247	L205	S 01°14'46" E	239.629
L140	N 01°18'32" W	15.000	L206	S 31°14'46" E	20.000
L141	N 89°04'21" E	11.195	L207	S 01°14'46" E	239.325
L142	N 44°06'42" E	8.496	L208	S 88°35'39" W	52.500
L143	N 01°18'32" W	105.535	L209	S 01°14'46" E	15.000
L144	S 88°41'28" W	15.000	L210	N 88°35'39" E	52.500
L145	N 01°18'32" W	15.000	L211	S 01°14'46" E	164.724
L146	N 88°41'28" W	15.000			
L147	N 01°18'32" W	295.698			
L148	N 88°34'43" E	299.273			
L149	N 01°25'17" W	10.000			
L150	N 88°34'43" E	15.000			
L151	S 01°25'17" E	10.000			
L152	N 88°34'43" E	225.000			
L153	N 01°25'17" W	10.000			
L154	N 88°34'43" E	15.000			
L155	S 01°25'17" E	10.000			
L156	N 88°34'43" E	80.405			
L157	N 43°34'43" E	15.085			
L158	N 88°34'43" E	20.213			
L159	S 46°25'17" E	15.085			
L160	N 88°34'43" E	163.048			
L161	N 01°25'17" W	10.000			
L162	N 88°34'43" E	15.000			
L163	S 01°25'17" E	10.000			
L164	N 88°34'43" E	301.686			
L165	N 43°34'43" E	95.713			



LEGEND

- STAT. R/W STATUTORY RIGHT OF WAY
- 00 RECORDED
- PL PROPERTY LINE
- W/L WATER LINE
- R/W RIGHT OF WAY
- LNA LIMITS OF NO ACCESS
- UNP UNPLATTED
- XXX ADDRESSES AS ASSIGNED BY CITY OF BROKEN ARROW
- ⊕ BENCHMARK



NOTE:
 THE SOURCE OF WATER SUPPLY IS SUPPLIED BY THE CITY OF BROKEN ARROW.
 SANITARY SEWAGE DISPOSAL IS PROVIDED BY THE CITY OF BROKEN ARROW.

ADDRESSES SHOWN ON THE PLAT ARE ACCURATE AS OF THE TIME THE PLAT WAS FILED. ADDRESSES ARE SUBJECT TO CHANGE AND SHOULD NEVER BE RELIED ON IN PLACE OF THE LEGAL DESCRIPTION.

BASIS OF BEARINGS:
 THE NORTH LINE OF THE NE/4 OF SECTION 11, T-18-N, R-14-E: N 88°35'39" E.

EXISTING EASEMENTS TO REMAIN

ELECTRIC LINE ESMT	BOOK 2127, PAGE 15
WATERLINE ESMT	BOOK 4207, PAGE 960
UTILITY ESMT	BOOK 5587, PAGE 1958
GAS ESMT	BOOK 3702, PAGE 216
TELEPHONE ESMT	BOOK 6391, PAGE 1004
RIGHTS OF WAY	BOOK 5560, PAGE 52
RIGHTS OF WAY	BOOK 2155, PAGE 80

BENCHMARK:
 2" ALUMINUM CAP FLUSH-SET IN CONCRETE STAMPED "CTA 932-303" N 393,648.827 E 2,624,676.662 Z 763.13

DATUM:
 THE HORIZONTAL DATUM FOR THIS PROJECT CONTROL IS OKLAHOMA STATE PLANE COORDINATE, NORTH ZONE, NAD 83 (1993).
 THE VERTICAL DATUM IS NAVD 1988.

OWNERS:
 LOTS 1, 2 & 3, BLOCK 1 & LOT 1, BLOCK 2
 CITY OF BROKEN ARROW
 220 S. FIRST STREET
 BROKEN ARROW, OKLAHOMA 74012
 (918) 259-2400

RESERVE A
 FLIGHTSAFETY INTERNATIONAL INC.
 700 N. NINTH ST.
 BROKEN ARROW, OKLAHOMA 74012
 (918) 259-4000

DEVELOPER:
 CITY OF BROKEN ARROW
 220 S. FIRST STREET
 BROKEN ARROW, OKLAHOMA 74012
 (918) 259-4000

FLIGHTSAFETY INTERNATIONAL INC.
 700 N. NINTH ST.
 BROKEN ARROW, OKLAHOMA 74012
 (918) 259-4000

ENGINEER / SURVEYOR
 CRAFTON TULL
 220 E. 8th ST.
 TULSA, OKLAHOMA 74119
 (918) 548-0347

SURVEYOR (ALTA SURVEY)
 SISEMORE WEISZ AND ASSOCIATES, INC.
 6111 E. 32nd PL.
 TULSA, OKLAHOMA 74135
 (918) 665-3600

LOT/BLOCK #	ACREAGE
LOT 1, BLOCK 1	23.39 ACRES
LOT 2, BLOCK 1	6.84 ACRES
LOT 3, BLOCK 1	4.48 ACRES
LOT 1, BLOCK 2	1.76 ACRES
RESERVE A	1.68 ACRES
TOTAL	38.15 ACRES

APPROVED BY THE CITY COUNCIL OF THE CITY OF BROKEN ARROW, OKLAHOMA
Craig Thurmond
 MAYOR

Marie Ange
 ATTEST: CITY CLERK

STORMWATER DETENTION ACCOMMODATIONS FOR THIS SITE ARE PROVIDED IN ACCORDANCE WITH FEE-IN-LIEU OF DETENTION DETERMINATION #DD-92110-16

CASE NO. PT 10-107
 DEVELOPMENT NO. 09-141
 PAGE 1 OF 2

CERTIFICATE
 I hereby certify that all real estate taxes involved in this plat have been paid as reflected by the current tax rolls. Security as required has been provided in the amount of \$ _____ per trust receipt no. _____ to be applied to 20 _____ taxes. This certificate is NOT to be construed as payment of 20 _____ taxes in full but is given in full satisfaction of the amount of the security deposit of \$ _____ may be filed on record. 20 _____

Dated: 12th day of December, 2012
 By: *Dennis Sobiech*
 Deputy

STATE OF OKLAHOMA } SS
 COUNTY OF TULSA }
 I, Earlene Wilson, Tulsa County Clerk, in and for the County and State above named, do hereby certify that the foregoing is a true and correct copy of a like instrument now on file in my office.
 Dated the 12th day of December, 2012
 EARLENE WILSON, Tulsa County Clerk
Earlene Wilson
 Deputy

