

City of Broken Arrow

Drainage Advisory Committee



PROJECT REPORT

DATE:	04/16/24
NAME	Patrick Wilson, PE, CFM, Stormwater Division Manager, City of Broken Arrow
ADDRESS / LOCATION	12300 E 91 st St Broken Arrow, OK 74012
WATERSHED	Haikey
ESTIMATE	\$50,000.00 for design
CASE NO.	24-002

DESCRIPTION

The four-cell box culvert under Washington Ave (91st) near the Diocese of Tulsa in Broken Arrow was widened during the roadway widening project. The construction/widening of the boxes was completed, but the armoring did not take place. The armoring project was bid out by the City in 2021, but did not receive any bids.

The culvert has silted in and blocking flow in 3 of the boxes. This appears to be causing the flow through the one box to increase thereby increasing the normal velocity through the one cell.

The increased velocity has caused the south bank of Haikey creek to erode. The project will be to clean the box culvert, the north channel, and to armor the southern bank.

The area is located in a floodplain and a blue line stream.

Staff is requesting \$50,000.00 in design funds for erosion control and channel stabilization

BENEFIT

To clean out the channel under Washington St and keep Haikey creek flowing unimpeded leading to the proper floodplain and to mitigate erosion.

RECOMMENDATION

Approve the request for the expenditure of \$50,000 to design erosion control and channel stabilization of the southern bank.

COMPLETED BY: Nathanael Kohl

DATE: 04/16/24

Drainage Advisory Committee

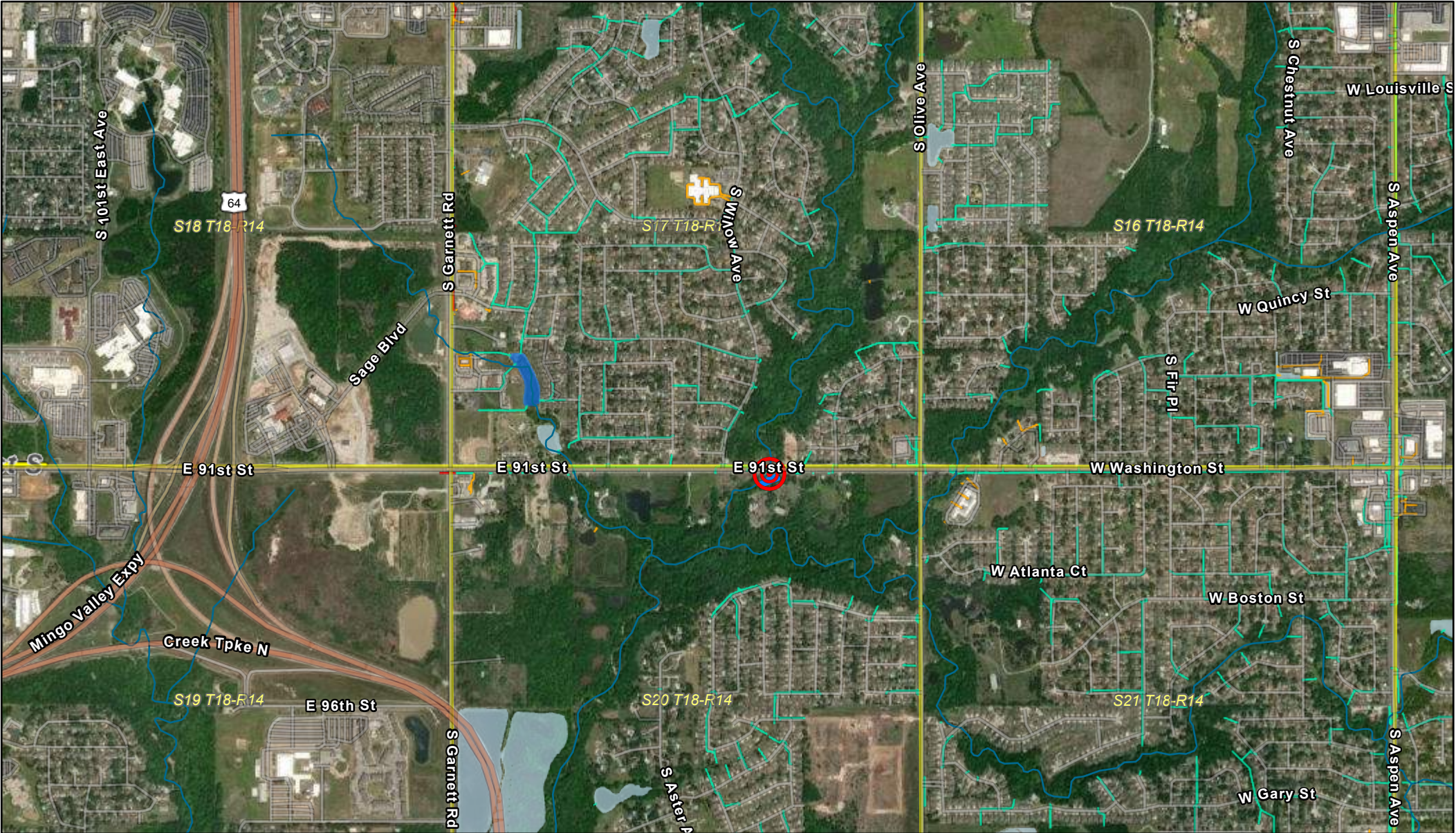


DESCRIPTION OF PROBLEM: (*PHOTOS SHOULD ACCOMPANY APPLICATION)

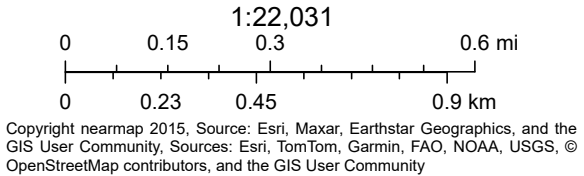
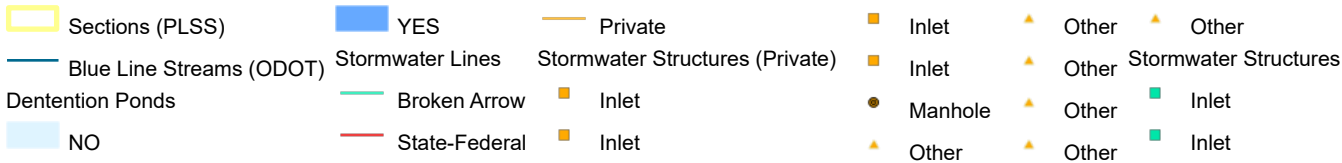
Signature: Stormwater Engineering Division

05-08-2020

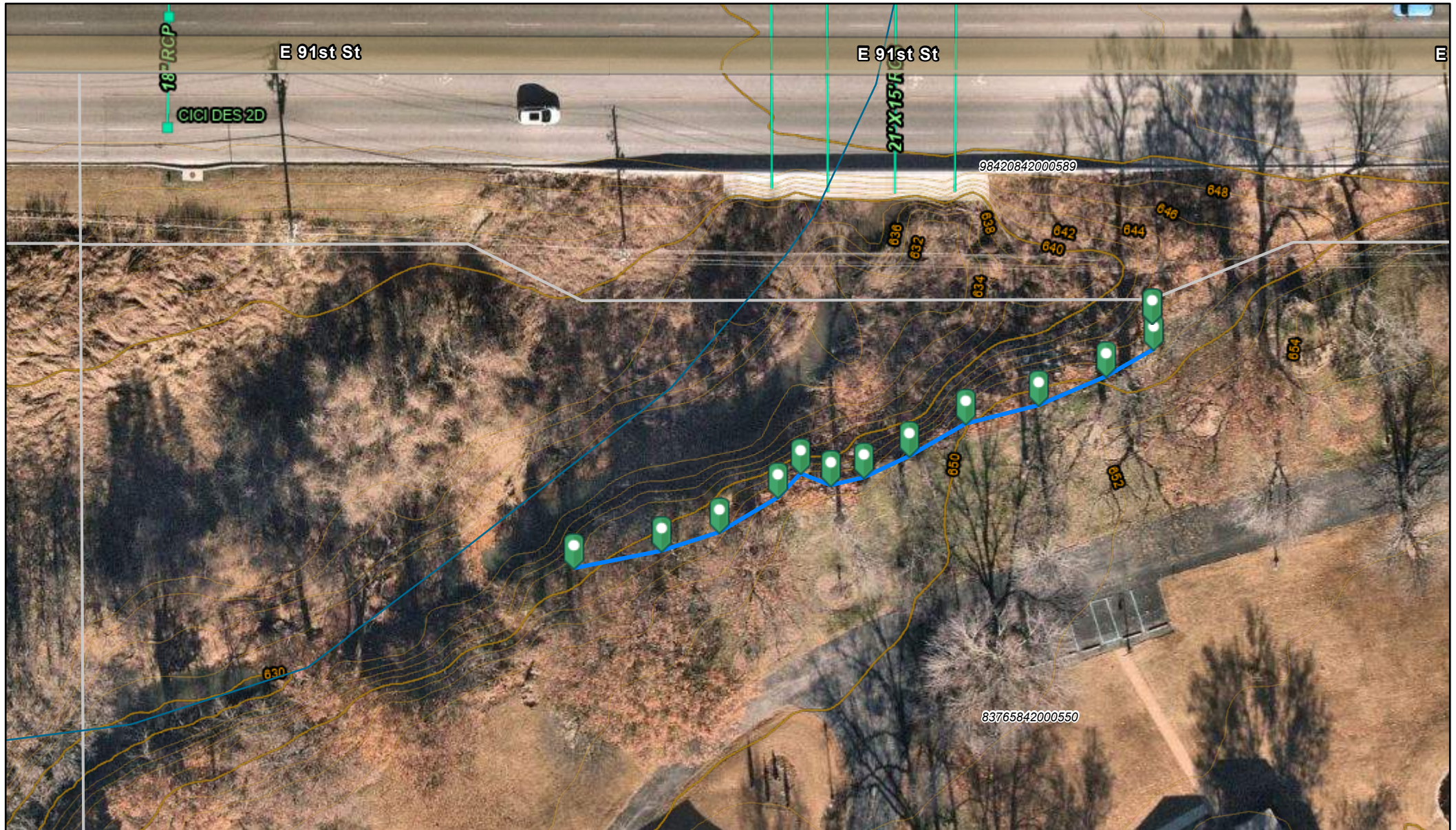
Stormwater Utility Map



4/8/2024, 9:40:17 AM



Stormwater Utility Map



4/8/2024, 9:31:04 AM



Parcels



Sections (PLSS)



Blue Line Streams (ODOT)

Stormwater Lines

Broken Arrow

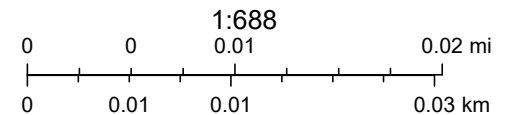
Stormwater Structures

Inlet

Contours_2ft

2ft

10ft

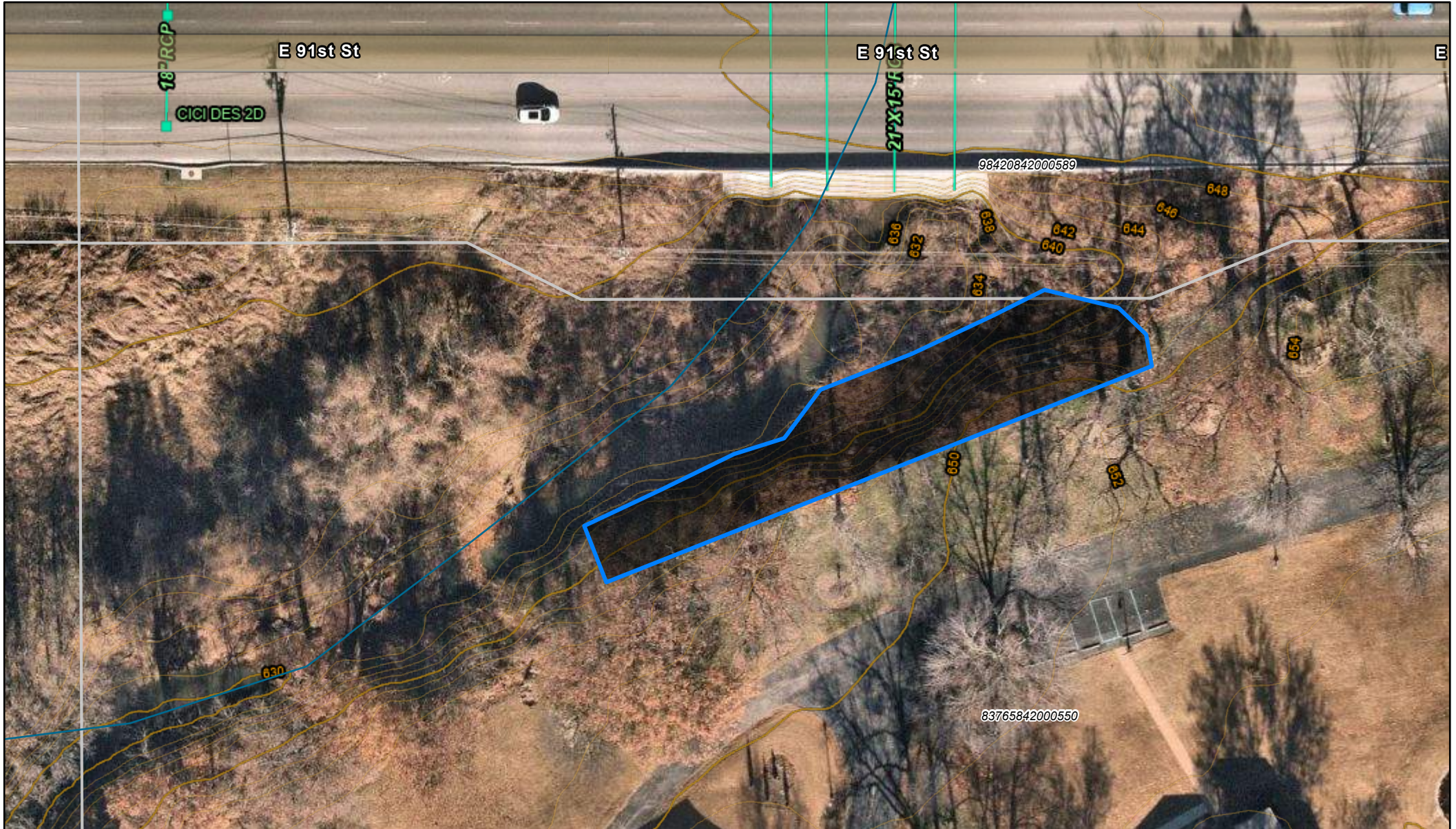


Copyright nearmap 2015, Source: Esri, Maxar, Earthstar Geographics, and the GIS User Community, Sources: Esri, TomTom, Garmin, FAO, NOAA, USGS, © OpenStreetMap contributors, and the GIS User Community

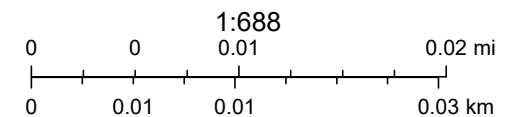
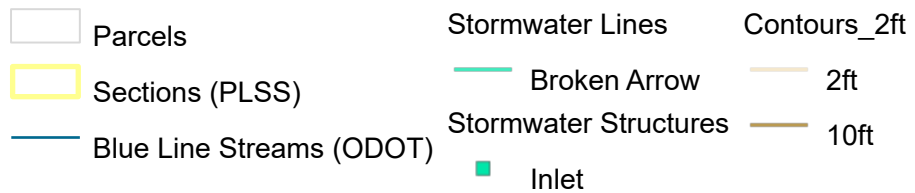
City of Broken Arrow

Copyright nearmap 2015 | Maxar | City of Broken Arrow Geospatial Services Division | City of Broken Arrow | Tulsa County Assessor | Esri Community Maps Contributors, City of Tulsa, Texas Parks & Wildlife, © OpenStreetMap, Microsoft, Esri, TomTom, Garmin, SafeGraph, GeoTechnologies, Inc,

Stormwater Utility Map



4/8/2024, 9:34:40 AM



Copyright nearmap 2015, Source: Esri, Maxar, Earthstar Geographics, and the GIS User Community, Sources: Esri, TomTom, Garmin, FAO, NOAA, USGS, © OpenStreetMap contributors, and the GIS User Community



