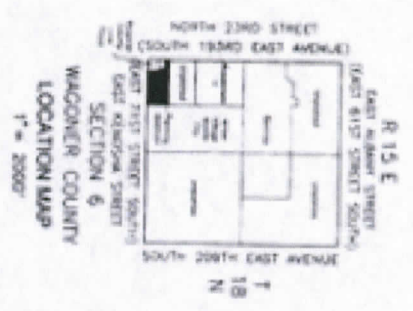


FINAL PLAT TIGER PLAZA

AN ADDITION TO THE CITY OF BROKEN ARROW,
BENEFITING A REVISION OF FLEMING ADDITION
AND A PART OF GOVERNMENT LOT 1, SECTION 5, T-18-N, R-15-E,
WAGONER COUNTY, STATE OF OKLAHOMA

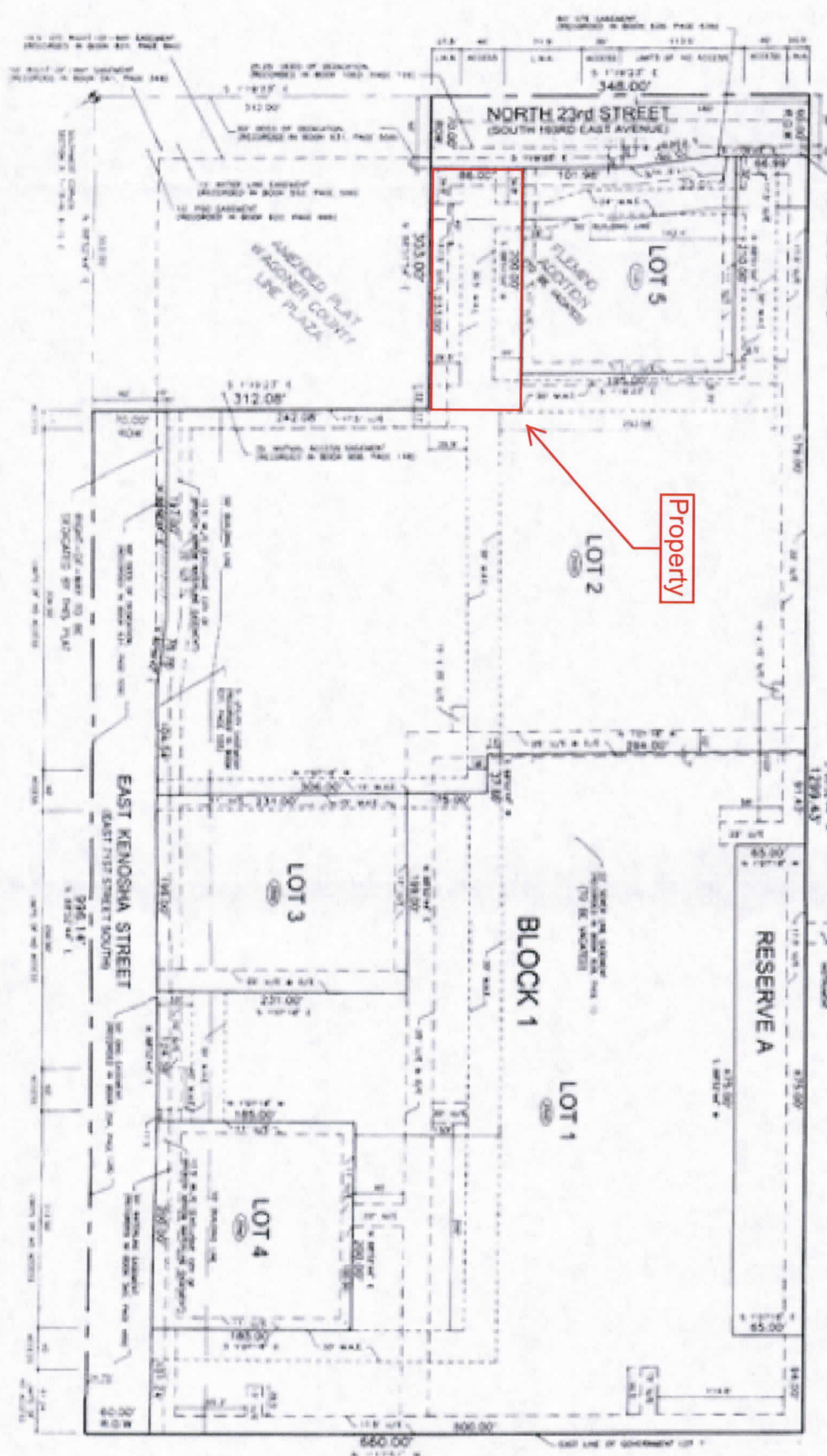
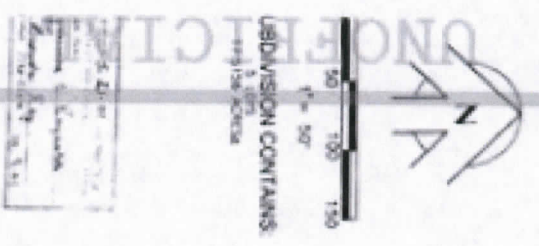


OWNER
ALBERTSON'S INC.
a Division of
KROGER Corporation
2000 N. Lincoln
Bldg. 1000
Broken Arrow, OK 74012

OWNER OF LOT 1
LARRY D. FLEMING
an individual
2000 N. Lincoln Bldg. 1000
Broken Arrow, OK 74012

PLATTING
WHITE SURVEYING
C. M. F. A. R. V.
1000 N. Lincoln Bldg. 1000
Broken Arrow, Oklahoma 74012
Phone: (918) 251-1111
www.white-surveying.com

PROJECT
KHOUJRY ENGINEERING, INC.
P.O. BOX 1011
1000 N. Lincoln Bldg. 1000
Broken Arrow, Oklahoma 74012
Phone: (918) 251-1111
www.khoulry.com



LEGEND

- • • • • Unimproved
- • • • • Proposed Street
- • • • • Existing Street
- • • • • Utility Lines
- • • • • Easement
- • • • • Right-of-Way
- • • • • Other

NOTES:
1. THIS PLAT IS SUBJECT TO ALL RECORDS AND INSTRUMENTS AFFECTING THE LAND HEREIN.
2. THE CITY OF BROKEN ARROW HAS REVIEWED THIS PLAT AND APPROVES THE SAME.
3. THE CITY OF BROKEN ARROW HAS REVIEWED THE RECORDS AND INSTRUMENTS AFFECTING THE LAND HEREIN AND HAS DETERMINED THAT THIS PLAT IS IN ACCORDANCE WITH THE CITY CHARTER AND ORDINANCES.
4. THE CITY OF BROKEN ARROW HAS REVIEWED THE RECORDS AND INSTRUMENTS AFFECTING THE LAND HEREIN AND HAS DETERMINED THAT THIS PLAT IS IN ACCORDANCE WITH THE CITY CHARTER AND ORDINANCES.
5. THE CITY OF BROKEN ARROW HAS REVIEWED THE RECORDS AND INSTRUMENTS AFFECTING THE LAND HEREIN AND HAS DETERMINED THAT THIS PLAT IS IN ACCORDANCE WITH THE CITY CHARTER AND ORDINANCES.

BENCHMARK
THE 2007 BENCH MARK POINT IS LOCATED AT THE INTERSECTION OF EAST KENOSHA STREET AND SOUTH 1950 EAST AVENUE (SOUTH 1950 EAST AVENUE) IN SECTION 5, T-18-N, R-15-E. ELEVATION = 720.74' above 1988

APPROXIMATE CITY
MAPLE CITY

MONUMENT NOTE

NO LOT CORNERS ARE MARKED WITH ANY MONUMENTS OR SURVEY MARKS. THE CORNERS OF THIS PLAT SHALL BE IDENTIFIED BY THE SURVEYOR'S MONUMENTS.

LEGAL DESCRIPTION

THE SOUTH 1/4 CORNER OF SAID LOT 5 IS IDENTIFIED BY A 1/2" DIAMETER IRON PIPE SET IN CONCRETE. THE SOUTH 1/4 CORNER OF SAID LOT 4 IS IDENTIFIED BY A 1/2" DIAMETER IRON PIPE SET IN CONCRETE. THE SOUTH 1/4 CORNER OF SAID LOT 3 IS IDENTIFIED BY A 1/2" DIAMETER IRON PIPE SET IN CONCRETE. THE SOUTH 1/4 CORNER OF SAID LOT 2 IS IDENTIFIED BY A 1/2" DIAMETER IRON PIPE SET IN CONCRETE. THE SOUTH 1/4 CORNER OF SAID LOT 1 IS IDENTIFIED BY A 1/2" DIAMETER IRON PIPE SET IN CONCRETE.

TIGER PLAZA
FINAL PLAT