

# OAK CREEK SOUTH

AN ADDITION TO THE CITY OF BROKEN ARROW,  
WAGONER COUNTY, OKLA., A SUBDIVISION OF A  
PART OF THE SE 1/4, NW 1/4 AND THE S 1/2  
NE 1/4, SECTION 18, T-18-N, R-15-E.

OWNER: JOHN WEBLE HOMES  
1101 S. W. 101<sup>ST</sup> E. W. 101<sup>ST</sup>  
TULSA, OKLA. 74112  
PHONE: 251-2551

ENGR. J.B. ENGINEERING CO.  
612 E. 31<sup>ST</sup> ST.  
TULSA, OKLA. 74103  
PHONE: 835-5961

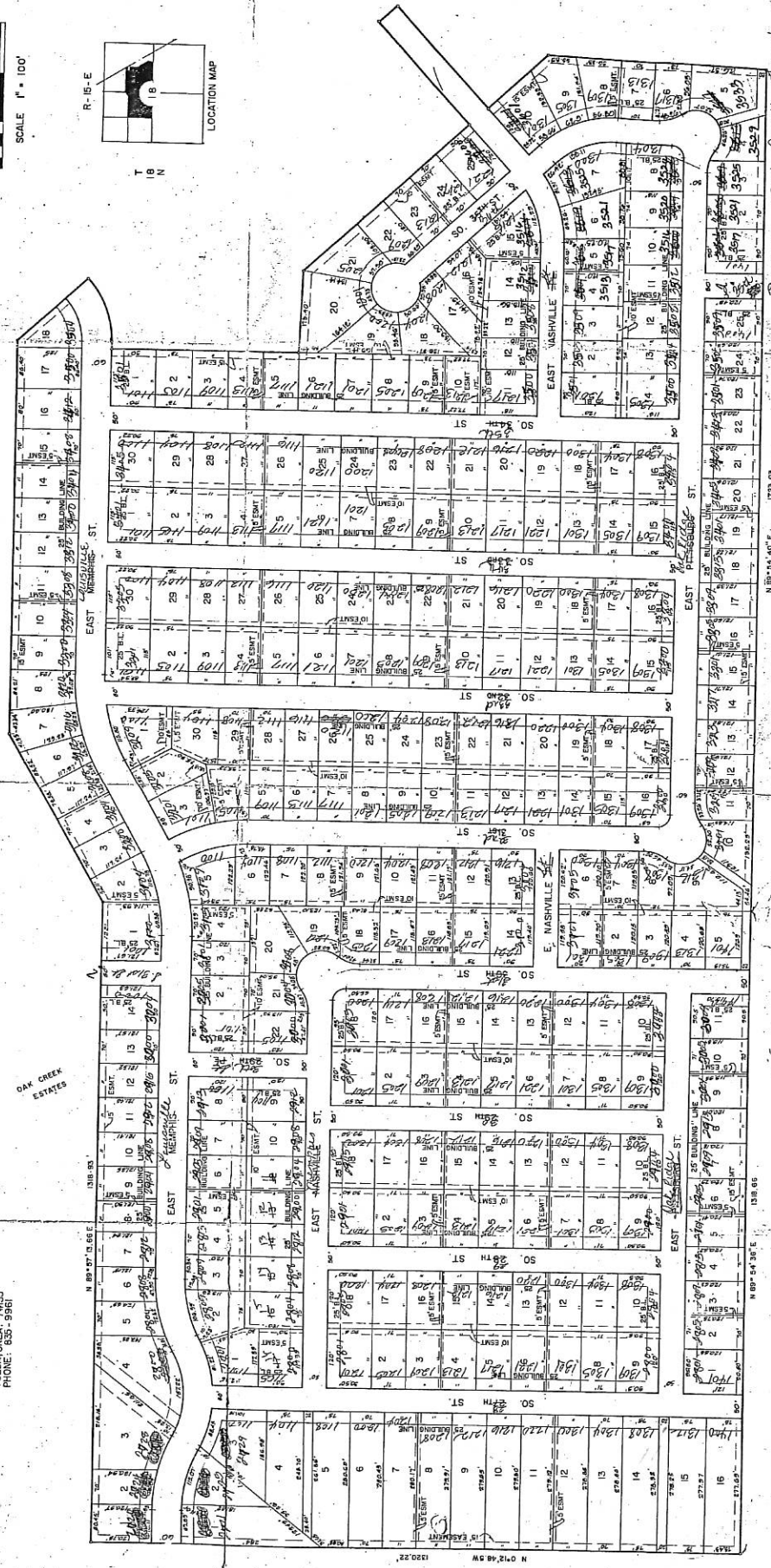
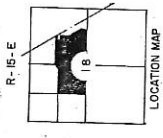
**PROSUN**  
JUL 20 1977  
PLANNING COMM.

CONDITIONAL FINAL PLAT

OAK CREEK ESTATES



SCALE 1" = 100'



OAK CREEK SOUTH

N 89° 54' 40" E. 1723.03

N 89° 54' 36" E. 1318.85

N 0° 12' 48" W 1300.22