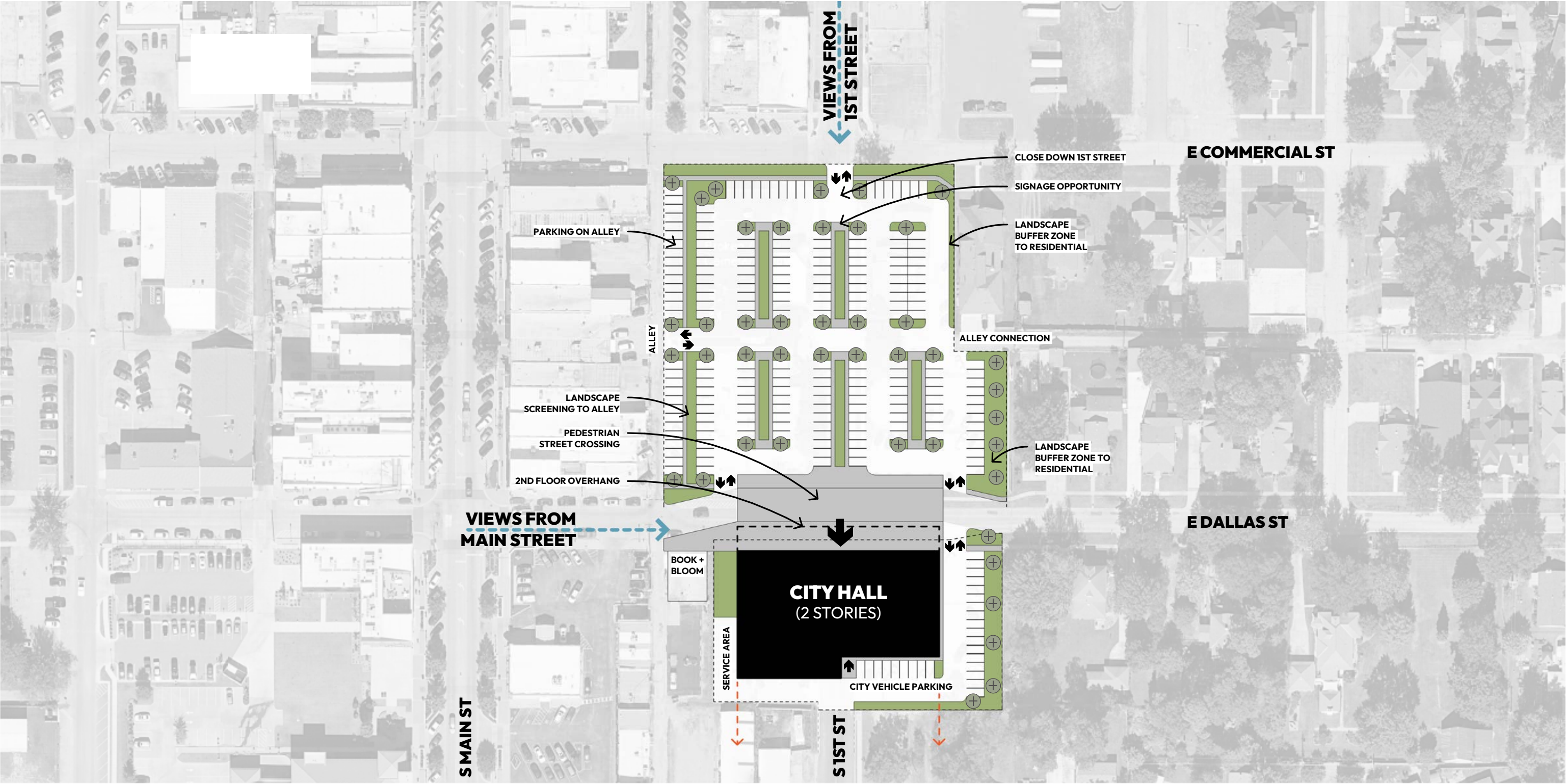




## BROKEN ARROW CITY HALL

Special Council Work Session | 08.12.2025



**SITE A**

Site Plan

(231) Parking Total

Hardscape/Sidewalk

Landscape

Building Access

Vehicle Access

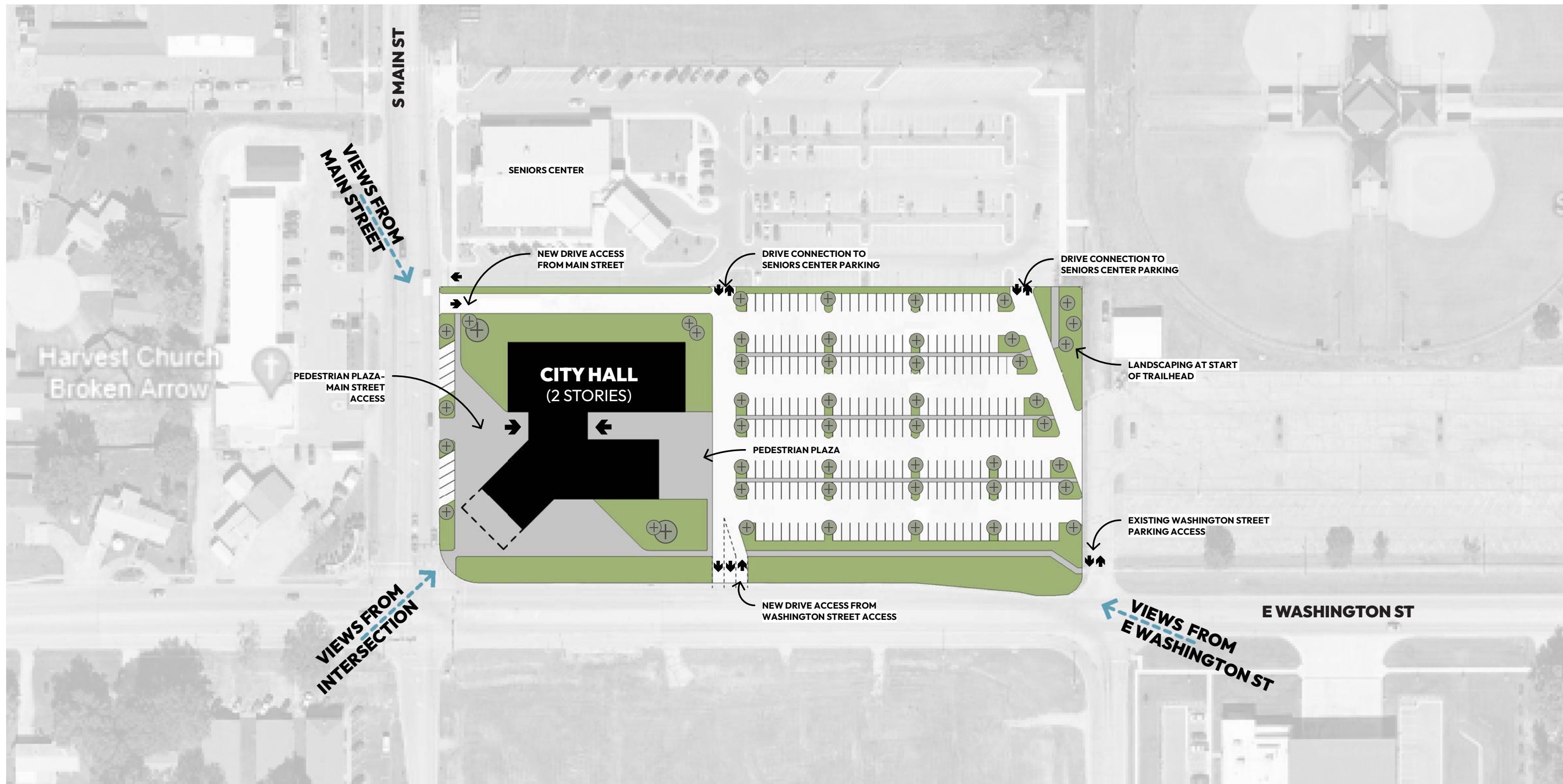
Proposed Tree

Proposed Future Expansion

Views To/From Site







**SITE B**

Site Plan

(245) Parking Total



Hardscape/Sidewalk



Landscape



Building Access



Vehicle Access



Proposed Tree



Proposed Future Expansion



Views To/From Site

100 FT





SITE A



SITE B

LEGAL + PERMITTING PROCESS



ROAD CLOSURE / RELOCATE



GRADING + STORMWATER



UTILITIES



DEMOLITION



BUILDING



PROJECT DURATION + PHASING



OVERALL IMPACT

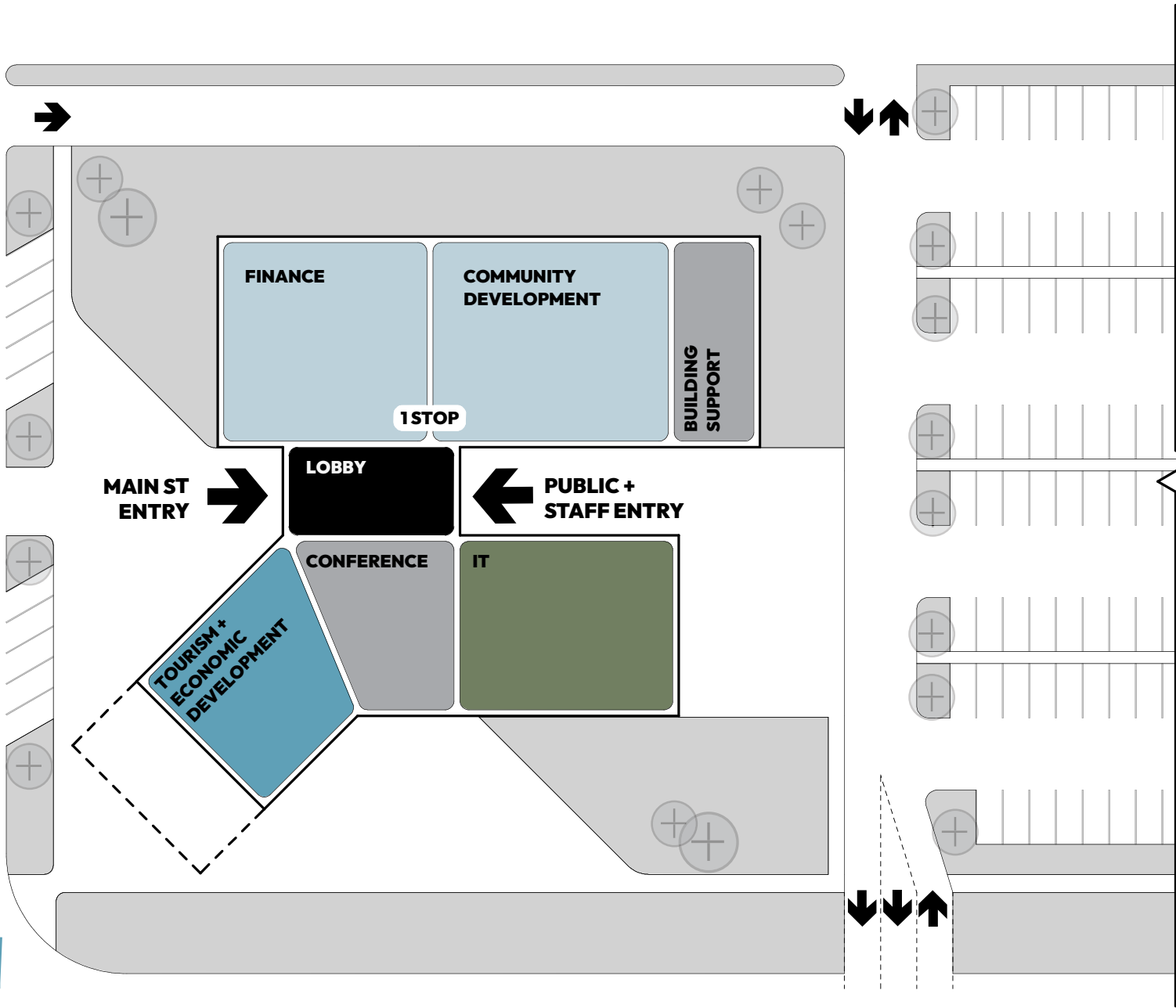


GREATER THAN

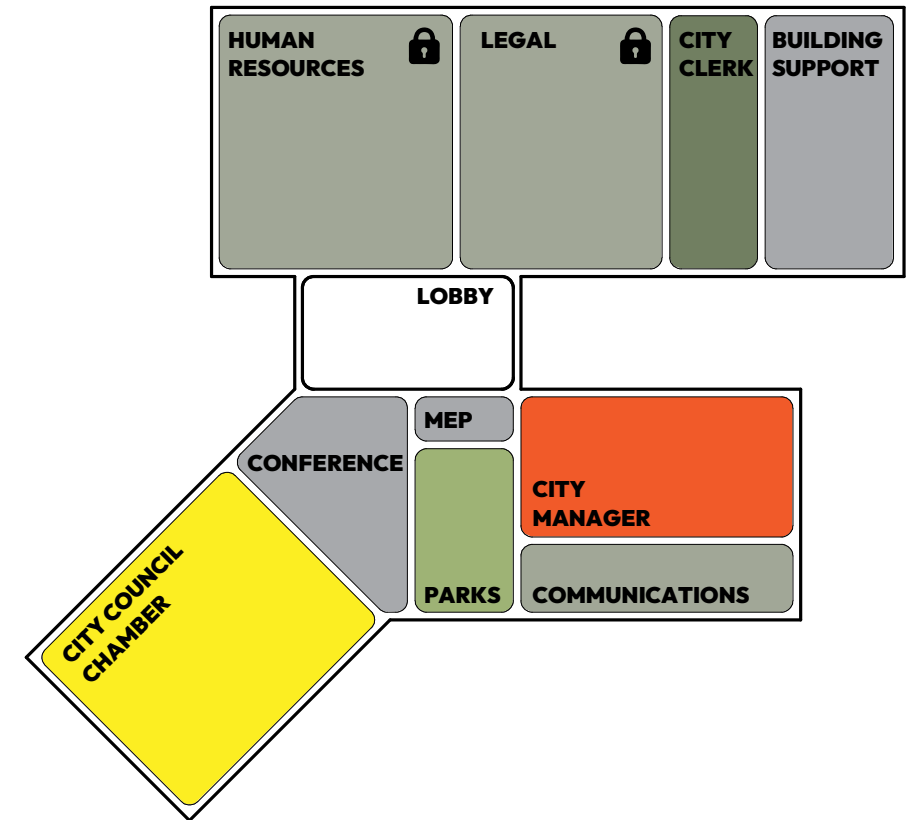
IMPACT COMPARISON MATRIX

VIEWS FROM  
MAIN STREET

VIEWS FROM  
INTERSECTION



FIRST FLOOR



SECOND FLOOR

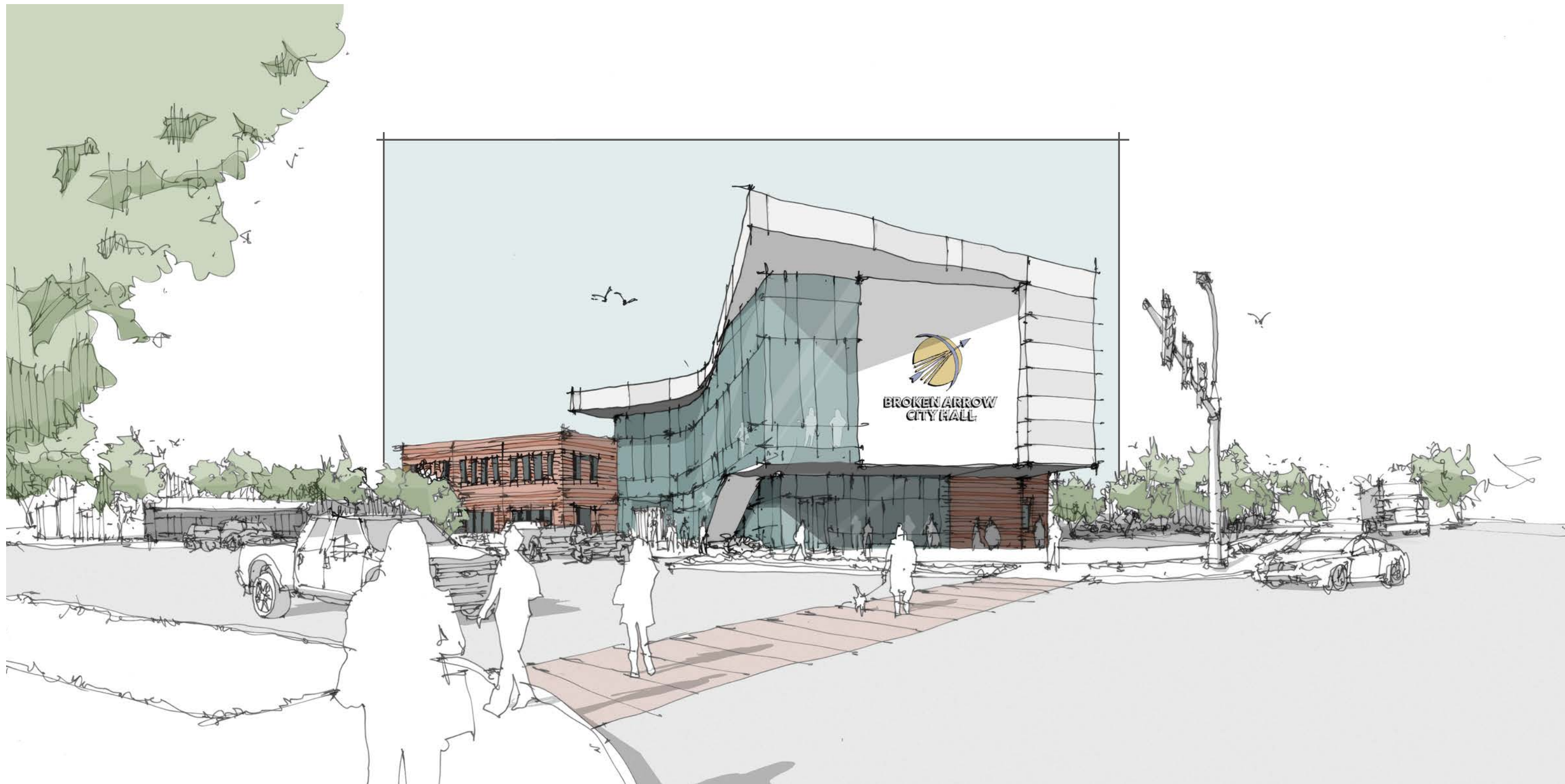
## SITE B

Space Plan

(245) Parking Total    Building Access    Vehicle Access    Secured Access

The proposed building consists of 2 stories. The first floor is approximately 25,000 SF and the second floor is approximately 26,000 SF with an overhang that reaches out over the intersection of Main Street and Washington Street, presenting the building from both the North-South approach and East-West approach.





## **SITE B**

Conceptual Vignette (Looking Northeast from Main + Washington Intersection)