

Presented to Planning Commission by
Sheena Botworth in their meeting of
September 28, 2017
Page 1 of 5



ONT ST

33RD ST

40TH E

34TH ST

BERKELEY
AVE

209TH EAST AVE

35TH
ST

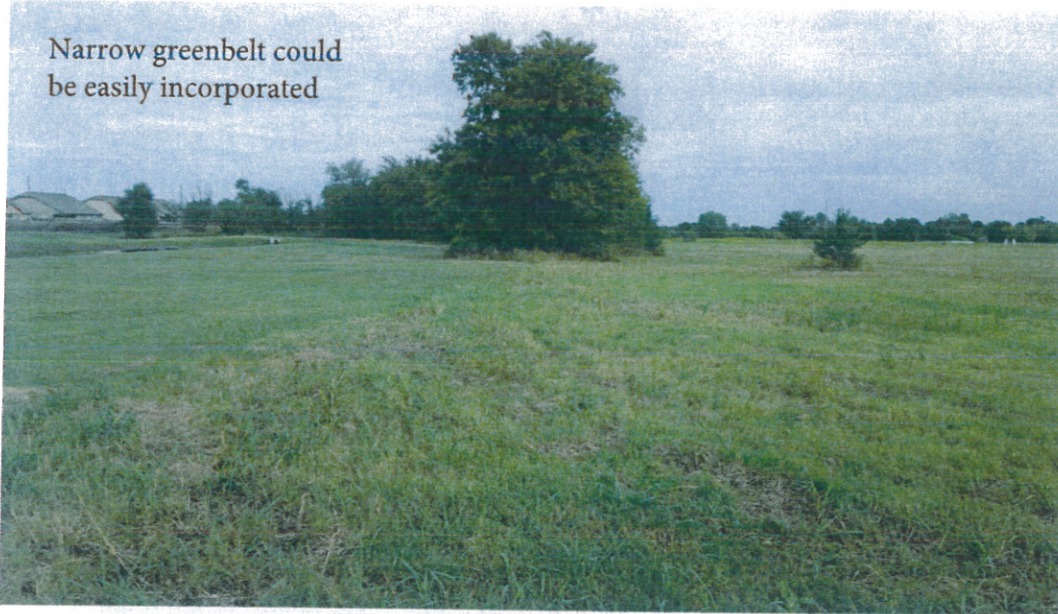
36TH S

AURORA AVE

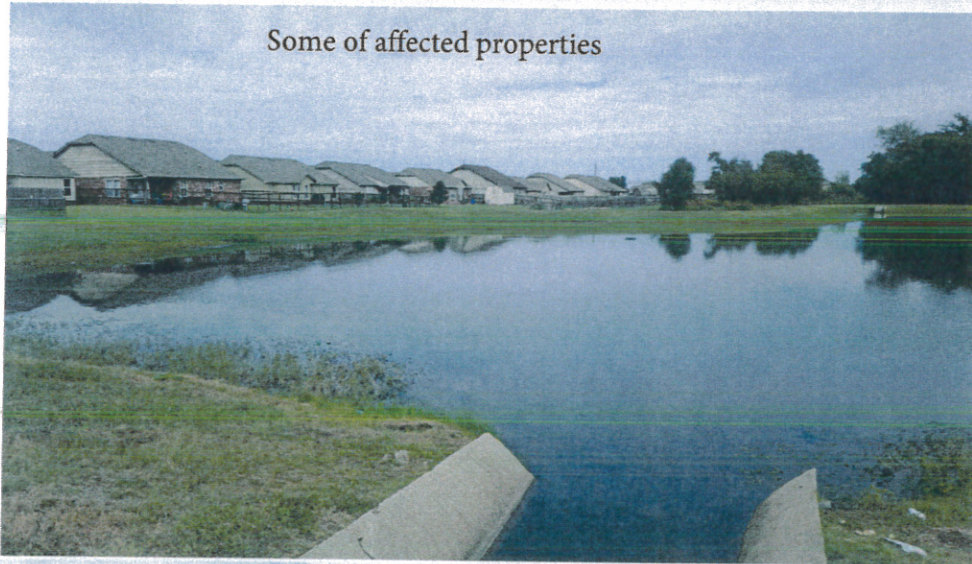
Presented to Planning Commission by
Sheena Botworth in their meeting of
September 28, 2017
Page 2 of 5

OF BROKEN ARROW

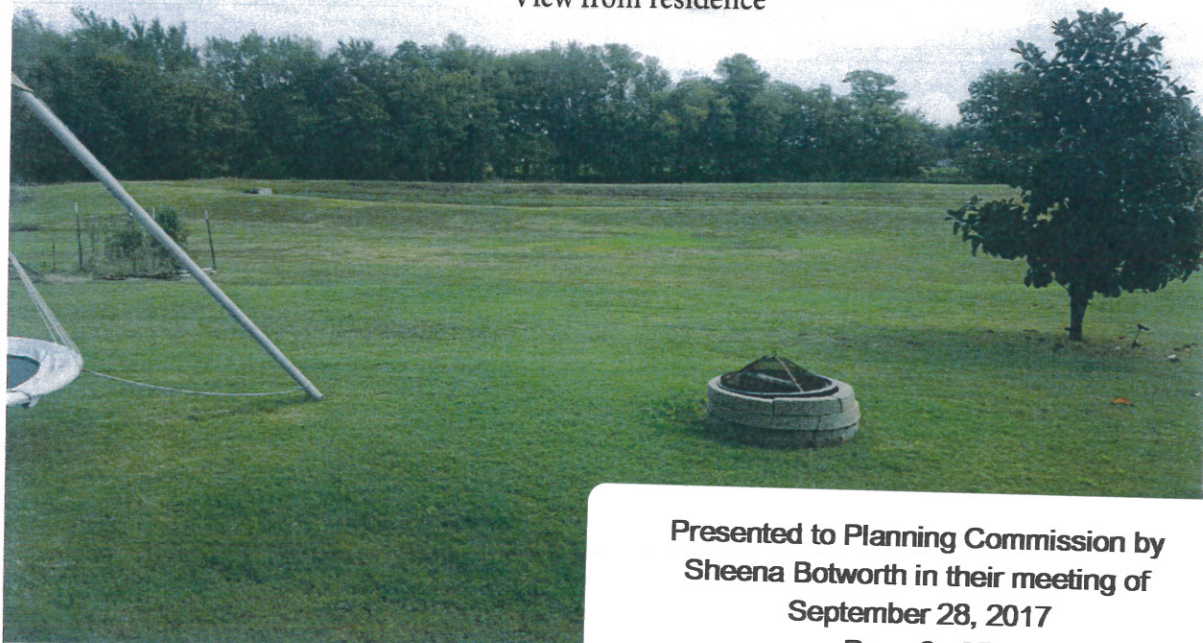
Narrow greenbelt could
be easily incorporated



Some of affected properties



View from residence



Presented to Planning Commission by
Sheena Botworth in their meeting of
September 28, 2017
Page 3 of 5

Looking north from proposed site west edge



Presented to Planning Commission by
Sheena Botworth in their meeting of
September 28, 2017
Page 4 of 5



Presented to Planning Commission by
Sheena Botworth in their meeting of
September 28, 2017
Page 5 of 5

