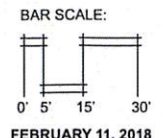
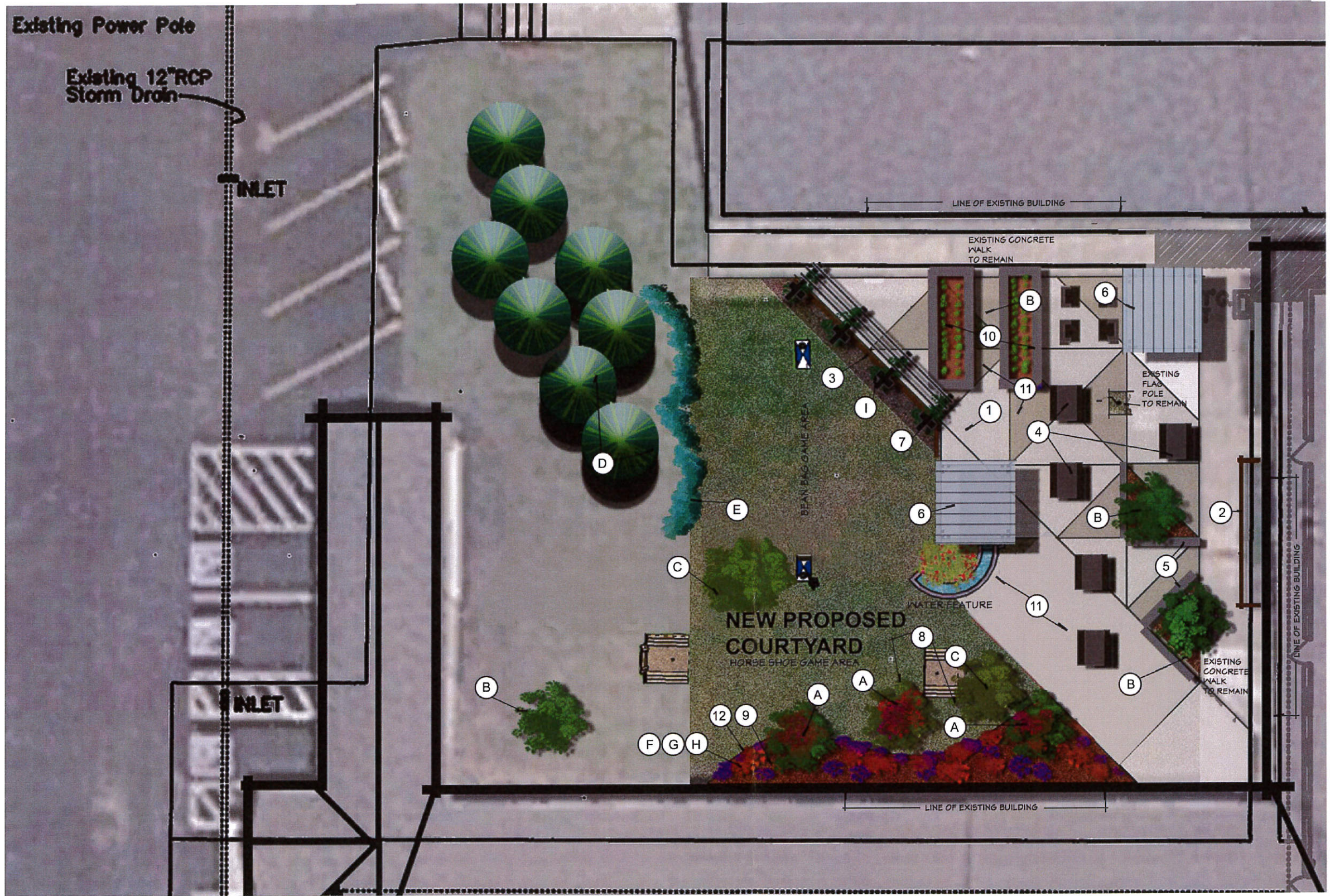


NEW PROPOSED COURTYARD OVERALL SITE PLAN





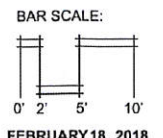
KEYNOTES:

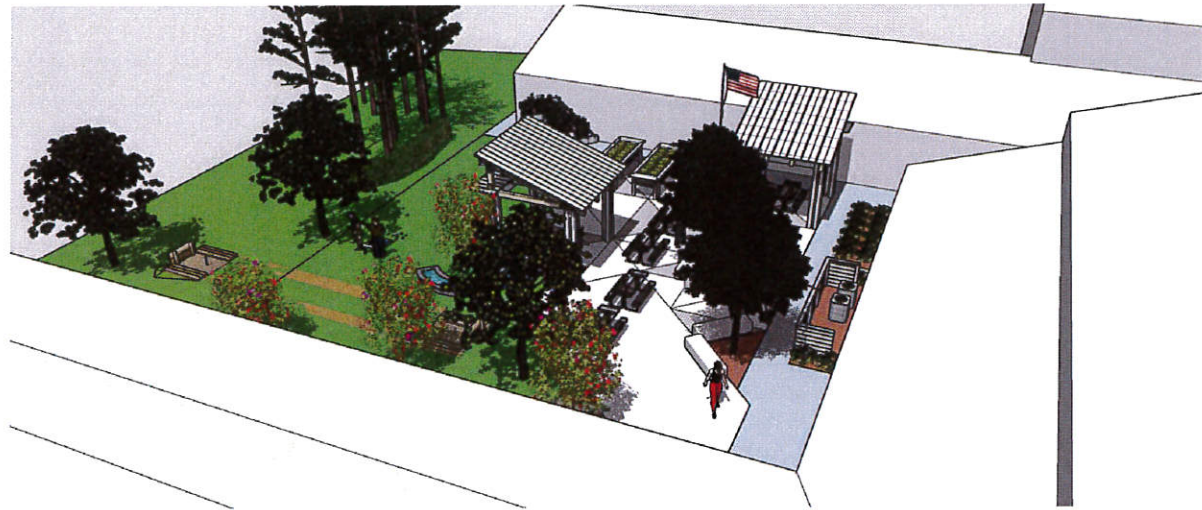
- 1 NEW CONCRETE PAVING
- 2 NEW FENCING SCREEN AROUND EXISTING COMPRESSORS
- 3 NEW FENCING SCREEN FOR PRIVACY AND WIND CONTROL
- 4 NEW TABLES AND BENCHES
- 5 NEW CONCRETE BENCHES
- 6 NEW 12'X12' SHADE PAVILLIONS
- 7 NEW WOOD TRELLIS FOR VINES TO SOFTEN HADRDSCAPE
- 8 NEW TREES WITH BIRD FEEDING AREA
- 9 NEW ORNAMENTAL LANDSCAPE BED TO SOFTEN EXISTING BUILDING
- 10 NEW RAISED BED GARDEN AREA
- 11 NEW COLORED CONCRETE AREA W/ EXPANSION & CONTROL JOINTS FOR PHASED CONSTRUCTION
- 12 METAL EDGING AND WOOD MULCH

PLANT TYPES:

- A CREPE MYRTLE (TREE)
- B PURPLE LEAF PLUMB TREE
- C TULIP TREE
- D LOBLOLLY PINE TREE
- E BOXWOOD HEDGE
- F INDIAN HAWTHORN
- G MONDO GRASS GROUND COVER
- H CREPE MYRTLE (BUSH)
- I JESSAMINE VINE

**NEW PROPOSED COURTYARD
ENLARGED COURTYARD PLAN**

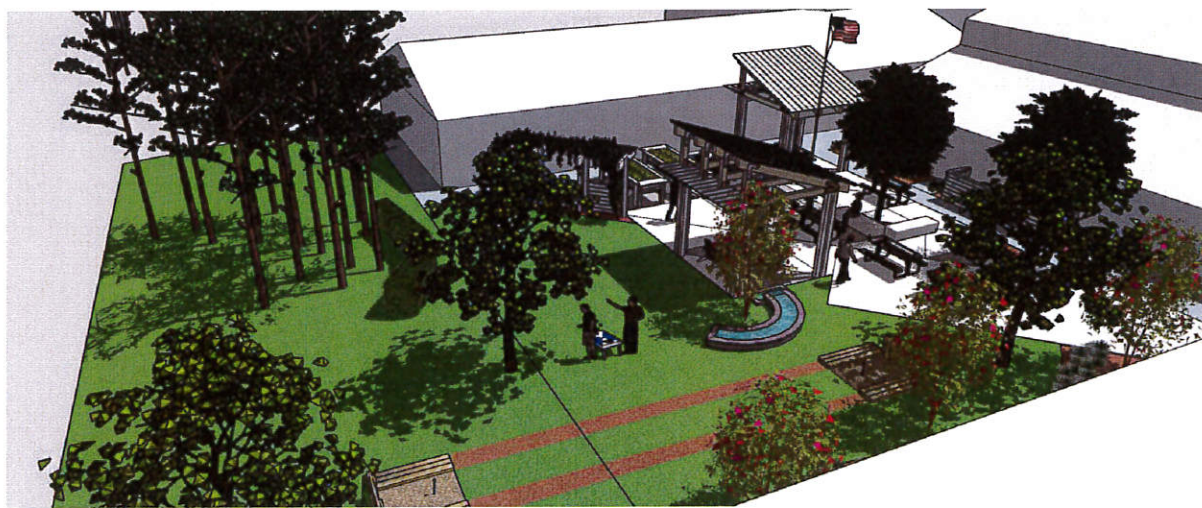




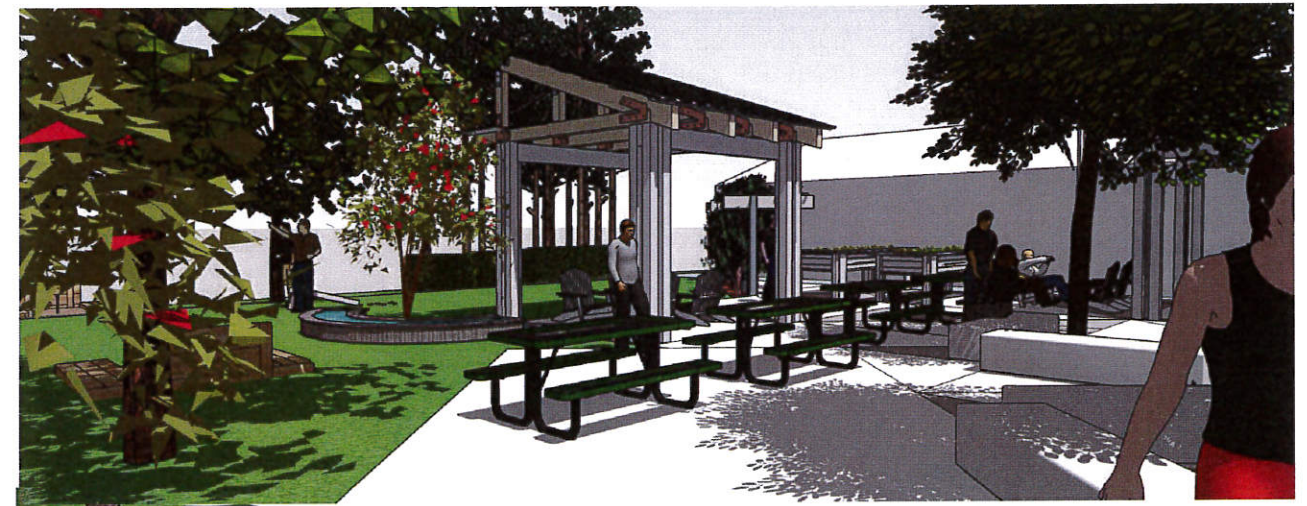
VIEW LOOKING NW - AERIAL



VIEW LOOKING NW

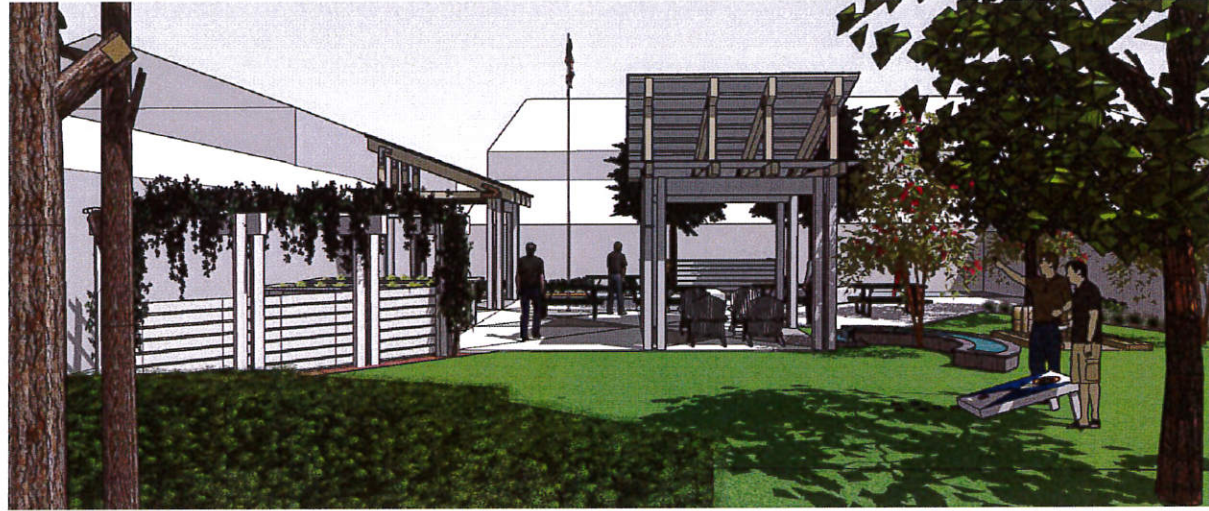


VIEW LOOKING NE - AERIAL

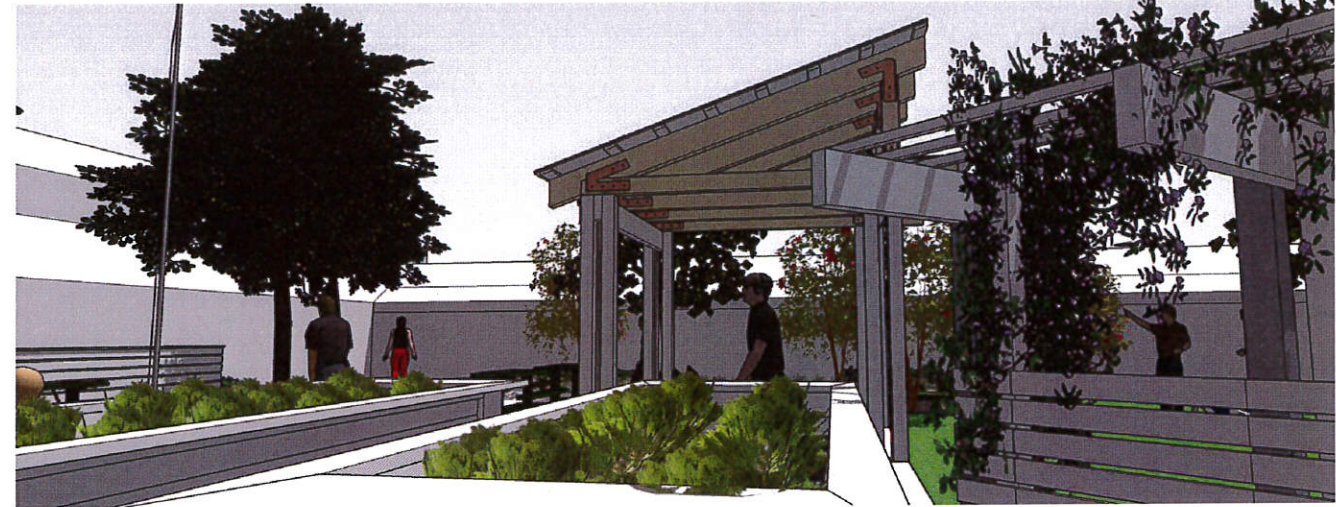


VIEW LOOKING NE

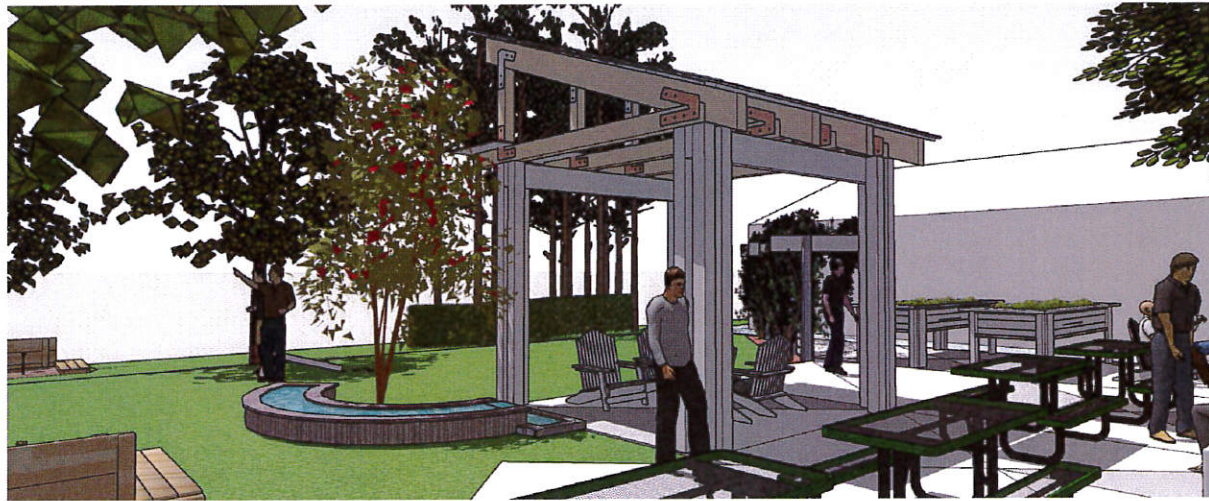
NEW PROPOSED COURTYARD PERSPECTIVE VIEWS



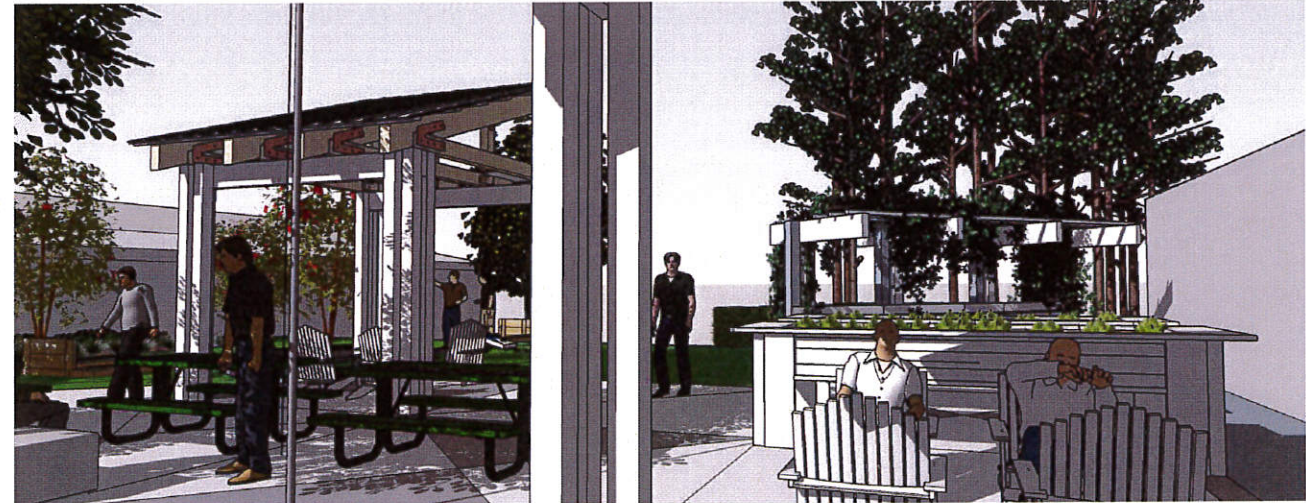
VIEW LOOKING EAST



VIEW LOOKING SOUTH



VIEW LOOKING NW



VIEW LOOKING SW

NEW PROPOSED COURTYARD PERSPECTIVE VIEWS

A Dynamite Crapemyrtle

Tulsa Landscape Plant Data Sheet

Dynamite Crapemyrtle

Botanical Pronunciation: *Lagerstroemia indica* 'Whit II'
la-ger-STRE-ree-a IN-d-ka

Plant type: Tree

Deciduous/Evergreen: Deciduous

Cold hardiness: Zones 6-10

Light needs: Full Sun

Water needs: 1

Size: 15-20 feet tall and 10-15 feet wide

Growth rate: moderate



Culture: 1

Flower attributes: Clusters

Flower color: Red

Blooms: Summer into Fall

Foliage color: Green to Orange in the Fall

B Thundercloud Plum

Tulsa Landscape Plant Data Sheet

Thundercloud Plum

Prunus cerasifera 'Thundercloud'

Height: 20 feet
Spread: 20 feet
Sunlight: O
Hardiness Zones: 6-10

Other Names: Myrobolan Plum, Pissard Plum

Description:
A stunning accent tree that resembles a cloud of fragrant pink flowers in spring, deep purple foliage all season long, makes a bold statement in the landscape, best used as a solitary feature tree or in street plantings.

Ornamental Features:
Thundercloud Plum is bested in straggling clusters of fragrant pink flowers along the branches in early spring before the leaves. It has attractive deep purple foliage throughout the season. The solitary leaves are highly ornamental and turn an outstanding burgundy in the fall. The fruits are shiny purple drupes displayed in mid summer.



Landscape Attributes:
Thundercloud Plum is a deciduous tree with an upright spreading habit of growth. Its average texture blends into the landscape, but can be balanced by one or two finer or coarser trees or shrubs for an effective composition. This tree will require occasional maintenance and upkeep, and is best pruned in late winter once the threat of extreme cold has passed. It is a good choice for attracting birds to your yard. Gardeners should be aware of the following characteristic(s) that may warrant special consideration:

- Insects
- Diseases

Thundercloud Plum is recommended for the following landscape applications:

- Accent
- Shade

Planting & Growing:
Thundercloud Plum will grow to be about 20 feet tall at maturity, with a spread of 20 feet. It has a low canopy with a typical clearance of 4 feet from the ground, and is suitable for planting under power lines. It grows at a medium rate, and under ideal conditions can be expected to live for approximately 30 years. This tree should only be grown in full sunlight. It does best in average to evenly moist conditions, but will not tolerate standing water. It is not particular as to soil type or pH. It is highly tolerant of urban pollution and will even thrive in inner city environments. This is a selected variety of a species not originally from North America.

C Sweetbay Magnolia Tree

Tulsa Landscape Plant Data Sheet

Sweetbay Magnolia Tree

Product Rating
★★★★★
Average: 5 (1 vote)

Category: Trees - Fast Growing Trees
Flowering Trees

Plant Type: Deciduous

Light Requirement: Full Sun - Partial

Soil Condition: Well Drained - Moist - Wet

Bloom Season: Spring - Summer



Bloom Color: White

Mature Height: 30 - 50ft

Growth Rate: Medium-growing

Planting Zone: 5 6 7 8 9

Description:
Sweetbay Magnolia Tree
The Sweetbay Magnolia is a deciduous magnolia tree. You will find this Magnolia virginiana as a wonderful companion tree when planted near Crapemyrtles.
At one of our previous homes, we planted one of our Sweetbay Magnolias near our mailbox in full sun. From late spring to early summer, it became a daily treat to retrieve the mail with its 2 to 3 inch creamy white blossoms. The amazingly fragrant blossoms would entice us to linger for a moment to capture the lemon scented Victorian type fragrance. After 10 years of growth it stands as a magnificent specimen tree in the neighborhood.
The Magnolia Sweetbay Tree can be planted in almost any soil, from moist to wet, and will grow in much of the county with planting Zones 5 - 9.

D Loblolly Pine

Tulsa Landscape Plant Data Sheet

Loblolly Pine

Botanical Pronunciation: *Pinus taeda*

Plant type: Conifer

Deciduous/Evergreen: Evergreen

Cold hardiness: Zone 6-9

Light needs: Full Sun

Water needs: Moderate

Size: 60 to 90 feet tall and 40 to 50 feet wide

Growth rate: Fast

Culture: Most soils



Flower attributes: Does not flower

Flower color: n/a

Blooms: n/a

Foliage color: Green

TJ recommendations: Great tree for Oklahoma. I design Azaleas under this tree every time. It grows so fast, stand back & watch it grow! The pine straw is very useful also.

SPEC. PLANT TYPES:
 A CREPE MYRTLE (TREE)
 B PURPLE LEAF PLUMB TREE
 C TULIP TREE
 D LOBLOLLY PINE TREE
 E BOXWOOD HEDGE
 F INDIAN HAWTHORN
 G MONDO GRASS GROUND COVER
 H CREPE MYRTLE (BUSH)
 I JESSAMINE VINE

E Wintergreen Boxwood

Tulsa Landscape Plant Data Sheet

Wintergreen Boxwood

Botanical Pronunciation: *Buxus microphylla* var. *koronika* 'Wintergreen'

Plant type: Shrub

Deciduous/Evergreen: Evergreen

Cold hardiness: Zone 5-8

Light needs: Full sun to partial shade

Water needs: Moderate - low once established

Size: 3-4 feet wide, 4-5 feet tall

Growth rate: Moderate

Culture: Most soils




Flower attributes: Not showy

Flower color: n/a

Blooms: n/a

Foliage color: green

TJ recommendations: Great choice for foundation or edge planting. Not hard to maintain smaller. There are dwarf varieties too.

F Indian Hawthorn

Tulsa Landscape Plant Data Sheet

Indian Hawthorn

Botanical Pronunciation: *Raphirolepis indica*

Plant type: Shrub

Deciduous/Evergreen: Broadleaf Evergreen

Cold hardiness: Zones 7-10

Light needs: Partial to full sun

Water needs: Drought tolerate once established

Size: In Oklahoma 3 feet tall & wide, bigger further south

Growth rate: Moderate

Culture: Many soils




Flower attributes: 1

Flower color: White - but there are pink varieties

Blooms: Spring

Foliage color: Green

TJ recommendations: I grew up in Texas loving this shrub. Some winters can be a little tough in the transition zone.

G Mondo/Dwarf Mondo Grass

Tulsa Landscape Plant Data Sheet

Mondo Grass

Dwarf Mondo Grass

Botanical Pronunciation: *Ophiopogon japonicus*

o-fo-PO-gon ja-PON-i-kus

Plant type: Groundcover/Perennial

Deciduous/Evergreen: Evergreen

Cold hardiness: Zones 6-11

Light needs: Partial to full Sun

Water needs: low

Size: 10-12 inches tall

Growth rate: slow

Culture: most soil



Flower attributes: small

Flower color: Lilac

Blooms: Summer

Foliage color: Green

TJ recommendations: Both sizes are great addition to the landscape as a groundcover or edging

H Pocomoke Crapemyrtle

Tulsa Landscape Plant Data Sheet

Pocomoke Crapemyrtle

Botanical Pronunciation: *Lagerstroemia indica* 'Pocomoke'

Plant type: Shrub

Deciduous/Evergreen: Deciduous

Cold hardiness: Zone 6-9

Light needs: Full Sun

Water needs: Moderate

Size: 3-4 feet tall, 3-4 feet wide

Growth rate: Moderate

Culture: 1




Flower attributes: Cluster

Flower color: Pink

Blooms: Early Spring

Foliage color: Green

TJ recommendations: Love this low growing shrub form Crapemyrtle. Blooms like an Azalea, all season long.

I Carolina Jessamine

Tulsa Landscape Plant Data Sheet

Carolina Jessamine

Botanical Pronunciation: *Gelsemium sempervirens*

jel-SEM-ee-un sem-per-VY-renz

Plant type: Vine

Deciduous/Evergreen: Evergreen

Cold hardiness: Zones 5-9

Light needs: Full sun to light shade

Water needs: Moist soils

Size: 6-8 wide up to 20 feet tall

Growth rate: moderate

Culture: Most soil types

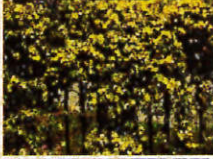


Flower attributes: Small five-petal-prolific

Flower color: Yellow

Blooms: Usually spring

Foliage color: Green

TJ recommendations: Great plant that overtakes fencing. Good for screening. Loves the heat.

NEW PROPOSED COURTYARD PLANT SPEC FOR COURTYARD PLAN