

OAK CREEK SOUTH

AN ADDITION TO THE CITY OF BROKEN ARROW,
WAGONER COUNTY, OKLA., A SUBDIVISION OF A
PART OF THE SE 1/4, NW 1/4 AND THE S 1/2
NE 1/4, SECTION 18, T-18-N, R-15-E.

OWNER: JOHN WEBLE HOMES,
1111 S. E. 41ST ST.,
TULSA, OKLA. 74112
PHONE: 251-2551

ENGR. J.B. ENGINEERING CO.,
S.E. 3RD ST.,
TULSA, OKLA. 74103
PHONE: 835-5961

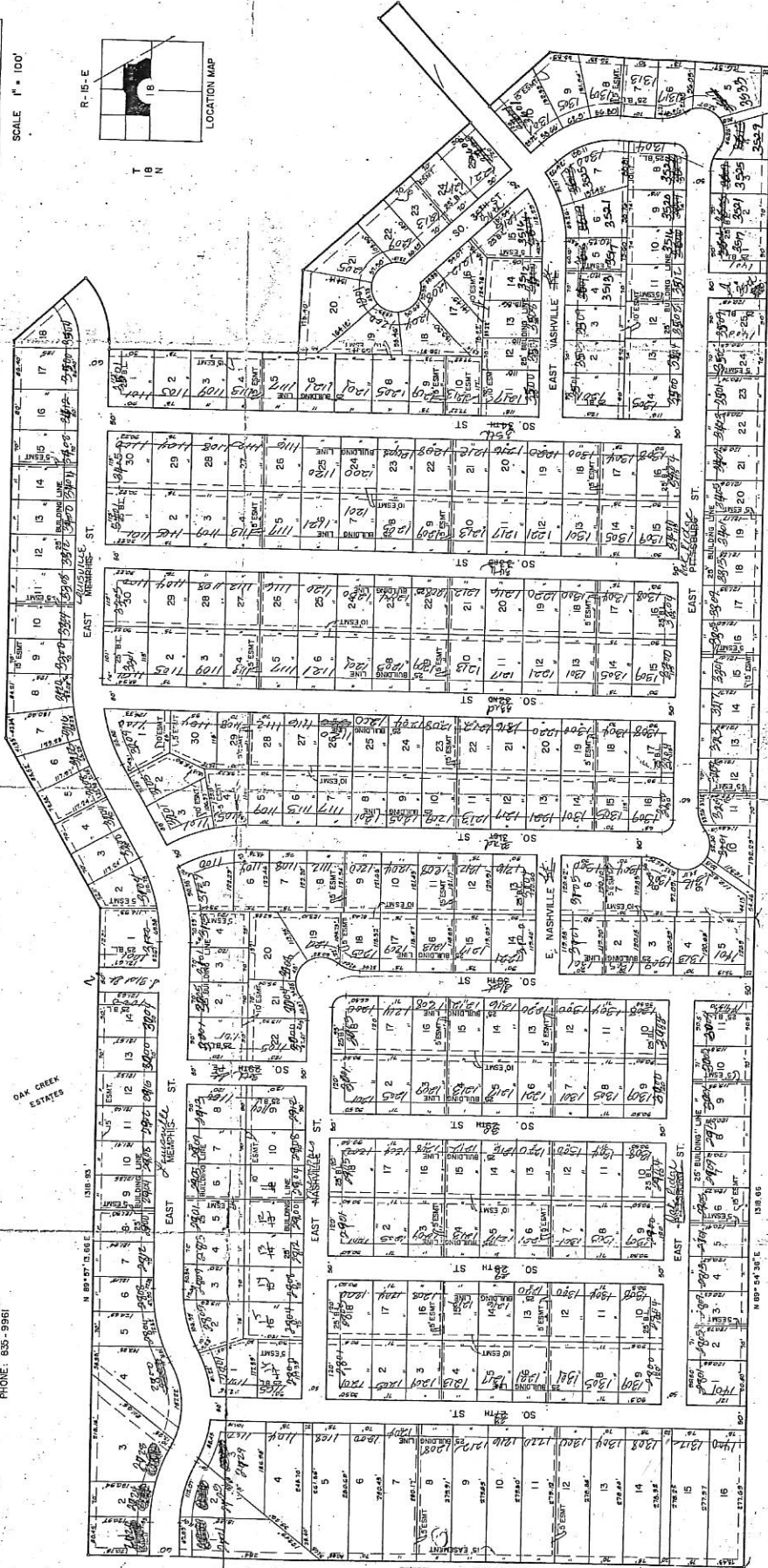
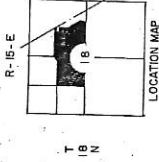
PROSUN
JUL 20 1977
PLANNING COMM.

CONDITIONAL FINAL PLAT

OAK CREEK
ESTATES



SCALE 1" = 100'



OAK CREEK SOUTH

N 89° 54' 40" E. 1723.03

N 89° 54' 36" E

N 0° 12' 48" W 1302.22

Handwritten notes:
1. 1st 2nd 3rd 4th 5th 6th 7th 8th 9th 10th 11th 12th 13th 14th 15th 16th 17th 18th 19th 20th 21st 22nd 23rd 24th 25th 26th 27th 28th 29th 30th