

September 12, 2016

Tom Hendrix
City Engineer
485 N. Poplar Ave.
Broken Arrow, OK

Dear Mr. Hendrix:

GAS LINE RELOCATIONS
Project # ST 1210
9th St. Houston St. to Elgin St.

Enclosed are 4 copies of our drawings and a 1 page cost estimate of the necessary relocations for the above project. If our relocation plans are agreeable we would like a letter stating so, along with an original signed contract.

If you have any questions please call me at (918) 831-8215.

Sincerely,

Jonathon Meadows
Government Relocation Coordinator
Eastern Region Engineering

Enclosure

c: file

**AGREEMENT
GAS FACILITIES RELOCATION
9th Street Houston Street to Elgin Ave
CITY OF BROKEN ARROW Project Number ST1210
TULSA COUNTY**

Oklahoma Natural Gas Company, a Division of ONE Gas, Inc., hereinafter called "Company," owns various medium-pressure and high-pressure distribution natural gas pipelines within the construction limits of the referenced project in the City of Broken Arrow, Tulsa County, Oklahoma, which Company utilizes in the discharge of its duties as a public service corporation.

City of Broken Arrow, Oklahoma, a municipal corporation, hereinafter called "City," has requested Company to relocate these facilities to accommodate the proposed construction of the referenced project as shown on plans therefore, the latest of which were received electronically by Company on March 2, 2016. City agrees to reimburse Company in the extent and manner hereinafter stated for that portion of the cost of relocating said facilities which is for the benefit of City.

Company proposes to perform the necessary relocation of its facilities in substantial accordance with the four plan sheets and the three-page cost estimate, all dated July 20, 2016, of which four copies each are attached. Company will bear the cost of relocating the portions of the facilities which do not occupy private rights-of-way. The City's share of the estimated cost of the necessary relocation will be \$147,228 all of which is to be reimbursed to Company by City.

City by accepting the proposal agrees that City shall reimburse Company for its share of the total actual relocation costs, said costs being arrived at in the same manner as used in Company's estimated cost of the project attached hereto.

Such relocation costs will be based upon, but not necessarily limited to, material suppliers', work contractors', and equipment-rental invoices; and at then-current rates and prices, company's transfer and stores expense charges for warehoused materials; payroll time sheets; indirect labor charges; auto, truck, and equipment use records; expense statements; and standard allocated overhead charges. Company's award of and payment for contracted work will be based upon competitive bids or continuing contract, whichever appears to the Company will be most practical and economical.

It is further understood, and City by accepting this proposal agrees, that City will reimburse the Company in accordance with this agreement within thirty (30) days after the said relocation work has been completed and Company's statement for City's costs thereof has been submitted. Company agrees that in the event Company should determine prior to commencement of construction that the revised estimated amount of the reimbursement by the City may exceed the estimated cost as stated herein, Company shall notify the City of such determination in writing. City shall have the right to terminate this agreement within ten (10) days of receipt of such said written notice. If City elects to so terminate, City shall pay Company the City's share of any engineering cost incurred to date of termination. If the City does not terminate the agreement within the ten (10) days, it shall remain in full force and effect.

The Company by agreeing to or by abandoning, relocating, or modifying any of its facilities pursuant to this agreement shall not thereby be deemed to have abandoned, modified, released, or otherwise destroyed any of its rights existing at the time of the execution of this agreement under valid and subsisting private right-of-way easements granted to, obtained by or through condemnation, or otherwise vested in the Company unless the Company shall have released same by written instrument.

Further, should the Company in the course of relocating the above-described facilities relocate any of such facilities

presently located on private right-of-way onto public right-of-way, the Company shall be deemed in respect to such facilities to have retained sufficient easement and other rights such that if said facilities are encompassed within any future governmental project requiring relocation, adjustment, or abandonment of such facilities, that the Company shall be entitled to reimbursement for the cost of such relocation, adjustment, or abandonment from the governmental agency requiring the same; provided, however, this provision shall not be construed as requiring reimbursement by the City of Broken Arrow except when such relocation, adjustment, or abandonment is required for a project of the City of Broken Arrow.

Any changes made by the City in this proposal as submitted by the Company shall be subject to the written acceptance thereof by the Company before there is any binding contract between the parties.

City by accepting this proposal warrants that it now has or will have unencumbered funds available with which to pay the relocation costs to the extent herein above provided.

If this proposal is not accepted by the City within one (1) year from the date of this letter, this proposal shall automatically terminate and thereafter shall not be subject to acceptance by the City unless the proposal is reinstated by Company.

Company respectfully requests that the City of Broken Arrow agree to the terms of this proposal by signing in the space provided below and returning one executed copy to us.

*SMB
8-30-16*

ATTEST:

Brian K. Shorridge

Secretary

**OKLAHOMA NATURAL GAS COMPANY,
A DIVISION OF ONE Gas, INC.**

By: *[Signature]*

Kent Shortridge
Vice President

Date: *8/30/16*

APPROVED AND ADOPTED by the City Council of the City of Broken Arrow this _____ day of _____, 2016.

ATTEST:

**CITY OF BROKEN ARROW
A MUNICIPAL CORPORATION**

City Clerk – Deputy

Mayor

APPROVED as to form and legality

City Attorney

OKLAHOMA NATURAL GAS COMPANY
 ESTIMATED GAS FACILITIES RELOCATION COST
 9TH STREET, HOUSTON STREET TO ELGIN AVENUE
 CITY OF BROKEN ARROW, PROJECT NO. ST1210

MATERIAL COST:

| | <u>QTY</u> | <u>UNIT COST</u> | <u>AMOUNT</u> |
|---|------------|------------------|-----------------|
| 6" 5/8" O.D. PIPE-STEEL .280 WALL, 18.99#/FT, API-5L X-52, ERW 20 MIL ARO | 420 ft. | 19.02 | \$7,989 |
| 6" PIPE PE2406/PE2708, IPS, .576" WALL, SDR 11.5 500' COIL, LB/FT 4.71 ASTM D2513 | 2,820 ft. | 4.39 | \$12,380 |
| 6" PIPE PE2406/PE2708, IPS, .576" WALL, SDR 11.5 40' LENGTHS, LB/FT 4.71 ASTM D2513 | 40 ft. | 4.58 | \$184 |
| 2" IPS, PIPE-PE2406/PE2708, .216" WALL, SDR 11, 500' COIL, LB/FT 2.17 ASTM D2513 | 500 ft. | 0.61 | \$305 |
| 2" IPS, PIPE-PE2406/PE2708, .216" WALL, SDR 11, 20' LENGTHS, LB/FT 2.17 ASTM D2513 | 20 ft. | 0.62 | \$13 |
| 6" TEE-SPHERICAL, SERIES 150, WELD 275 LB WP | 6 ea. | 1,578.69 | \$9,473 |
| 2" TEE-WELD, STOP, 3-WAY, SCFD, WD, THRD CAP | 2 ea. | 102.00 | \$204 |
| 2" FITTING STOP LINE WELD 60 LB WP | 4 ea. | 49.50 | \$198 |
| 6" FITTING-TRANSITION, ST-PL, WELD COATED WITH TRACER | 3 ea. | 120.05 | \$361 |
| 2" FITTING-TRANSITION, ST-PL, WELD COATED WITH TRACER | 2 ea. | 11.76 | \$24 |
| 6" ELBOW-ST WELD 90 DEG LR STD GRADE B, SMLS | 8 ea. | 52.35 | \$419 |
| 6" ELBOW-BUTT FUSION, 90 DEG, MD PE 2406 | 20 ea. | 18.98 | \$380 |
| 2" ELBOW-SOCKET FUSION, 90 DEG, MD PE 2406 | 10 ea. | 2.48 | \$25 |
| 6" TEE -WELD STD GRADE B, SMLS, .280" | 1 ea. | 87.81 | \$88 |
| 6" TEE BUTT FUSION, MD PE 2406 | 6 ea. | 23.48 | \$141 |
| 6"X4" REDUCER-BUTT FUSION, MD PE 2406 | 5 ea. | 12.99 | \$65 |
| 4"X2" REDUCER-BUTT FUSION, MD PE 2406 | 5 ea. | 4.97 | \$25 |
| 6" CAP-STEEL-WELD, STD WALL | 13 ea. | 24.51 | \$319 |
| 2" CAP-STEEL-WELD, STD WALL | 4 ea. | 9.42 | \$38 |
| 6" IPS, CAP, BUTT FUSION, MD PE 2406 | 2 ea. | 12.57 | \$26 |
| 2" IPS, CAP, SOCKET FUSION, MD PE 2406 | 3 ea. | 1.22 | \$4 |
| 6" COUPLING-ELECTROFUSION, BLACK, PE3408/4710, ASTM D2513/F1055 | 1 ea. | 37.65 | \$38 |
| 2" COUPLING-ELECTROFUSION, BLACK, PE3408/4710, ASTM D2513/F1055 | 2 ea. | 4.44 | \$9 |
| 5LB ANODE-CAST, MAGNESIUM, PACKAGED, 10 FT LEAD, H-1 ALLOY, .05 COPPER | 3 ea. | 18.17 | \$55 |
| 17LB ANODE-CAST, MAGNESIUM, PACKAGED, 10 FT LEAD, H-1 ALLOY, .05 COPPER | 8 ea. | 51.65 | \$414 |
| 4"X9' ROLL-WRAP-PIPE, MICROCRYSTALLINE #2 WAX, BROWN | 48 ea. | 10.64 | \$511 |
| GALLON-PRIMER-TEMCOAT 3000 | 4 ea. | 33.71 | \$135 |
| COATING-PIPE LIQUID EPOXY, HIGH BUILD TWO LITER KIT | 20 ea. | 46.25 | \$925 |
| #10 AWG WIRE-TRACER, FOR BORING, SOLID COPPER, PER ASTM B-1, 1000' COIL | 3,400 ft. | 0.16 | \$544 |
| 52"-84" BOX-VALVE, ABS, SCREW TYPE, ADJ. HT CAST IRON FLANGED, NON LOCKING LID | 7 ea. | 60.65 | \$425 |
| 6" VALVE-BALL, MD PE 2406, SDR11 FULL PORT, BUTT FUSION | 2 ea. | 394.13 | \$789 |
| 2" VALVE-BALL, MD PE 2406, SDR11 FULL PORT, BUTT FUSION | 2 ea. | 48.09 | \$97 |
| MISC. MATERIAL | | | <u>\$7,059</u> |
| TOTAL ESTIMATED MATERIAL COST | | | \$43,662 |

INSTALLATION COST:

| | <u>AMOUNT</u> |
|---|---|
| Stores Expense | \$11,615 |
| Contract Construction Labor | \$205,068 |
| Contract Design & Drafting Services | \$15,447 |
| Company Labor | \$30,761 |
| Indirect Labor, Payroll, Insurance, and Taxes | \$18,534 |
| Automotive Expense | \$6,153 |
| Right of Way Cost | \$0 |
| Restoration/Damages | <u>\$13,876</u> |
| TOTAL | INSTALLATION plus MATERIAL \$345,117 |

ESTIMATED ABANDONMENT COST

| | |
|------------------------------------|----------------|
| ESTIMATED ABANDONMENT COST | \$8,628 |
| Administrative and General Expense | \$74,287 |
| Omissions and Contingencies | \$34,512 |

TOTAL ESTIMATED RELOCATION COST

\$462,544

FINANCIAL RESPONSIBILITY

Total within Private Right of Way = 1,477 ft.
 Total within Public Right of Way = 3,133 ft.

| | | | |
|--------------------|--|--------|-------------|
| City of B.A. Share | 1,477 ft. within additional required R/W | 31.83% | = \$147,228 |
| | 4,641 ft. within total required R/W | | |

| | | | |
|-----------|-------------------------------------|--------|-------------|
| ONG Share | 3,164 ft. within present public R/W | 68.17% | = \$315,316 |
| | 4,641 ft. within total required R/W | | |

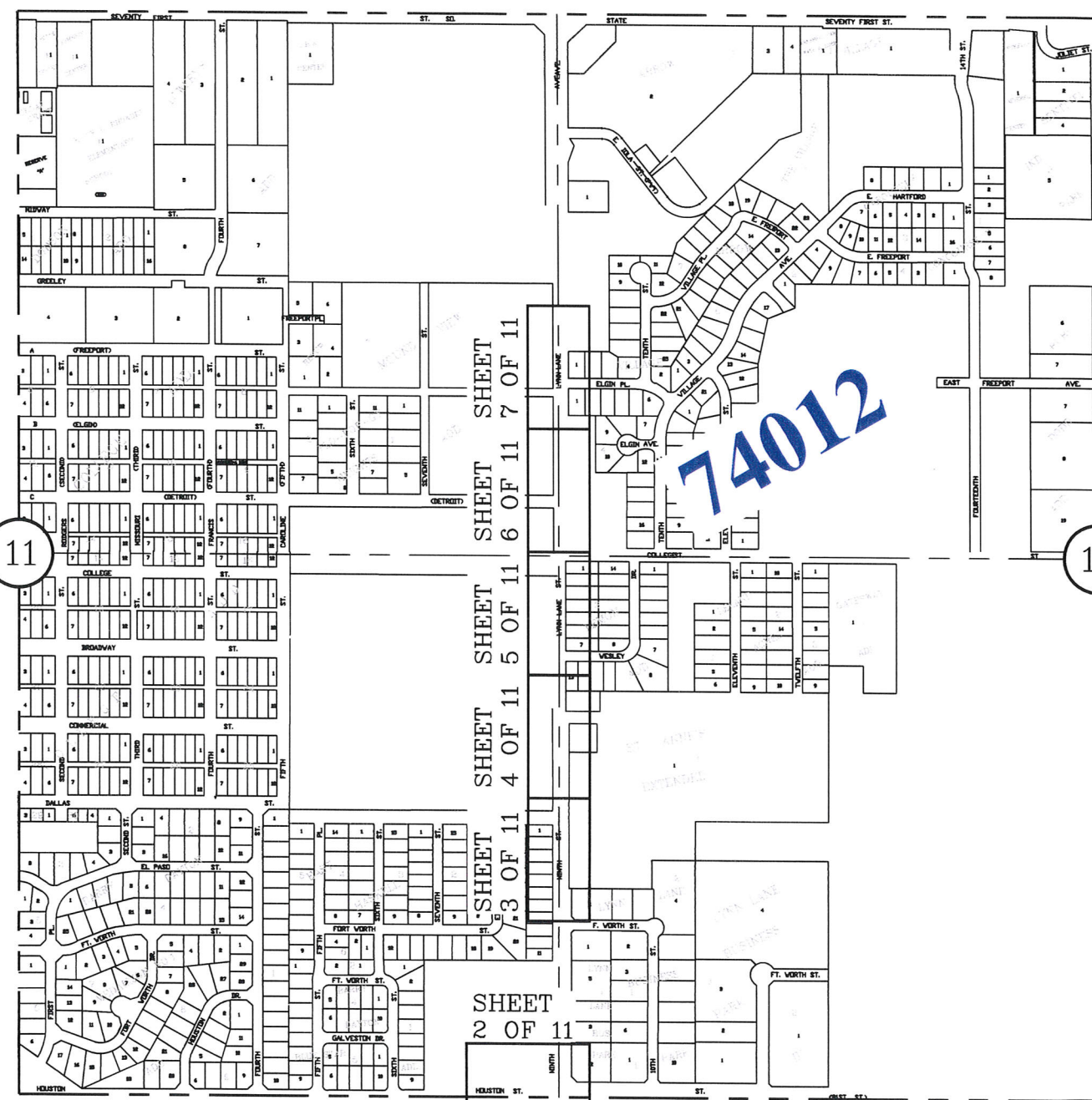
Eastern Region Engineering (Jonathon Meadows)

Prepared By:

Utility Design Services Inc.
 7/20/2016

TULSA COUNTY
CITY OF BROKEN ARROW
R 14 E

BASE MATERIAL REQUIRED



- ① 420' of 6 5/8" O.D. PIPE-STEEL, .280" WALL, 18.99#/FT, API-5L X-52, ERW, FBE-14-16 MILLS WITH 20 MIL ABRASION RESISTANT OVERLAY
- ② 2820' - 6" PIPE-PE2406/PE2708, IPS, .576" WALL, SDR 11.5, 500' COIL, LB/FT 4.71
- ③ 40' - 6" PIPE-PE2406/PE2708, IPS, .576" WALL, SDR 11.5, 40' LENGTHS, LB/FT 4.71
- ④ 500' - 2" PIPE-PE2406/PE2708, IPS, .216" WALL, SDR11, 500' COIL, LB/FT 2.17
- ⑤ 20' - 2" PIPE-PE2406/PE2708, IPS, .216" WALL, SDR11, 20' LENGTHS, LB/FT 2.17
- ⑥ 6 - 6" TEE-SPHERICAL, SERIES 150, WELD 275 LB WP
- ⑦ 2 - 2" TEE-WELD, STOP, 3-WAY, SCFD, WD, THRD CAP
- ⑧ 4 - 2" FITTING-STOP, LINE WELD 60 LB WP
- ⑨ 3 - 6" FITTING-TRANSITION, 6" WELD X 6" BUTT FUSION MD PE 2406
- ⑩ 2 - 2" FITTING-TRANSITION, ST-PL, WELD COATED WITH TRACER, MD PE 2406
- ⑪ 8 - 6" ELBOW-ST WELD 90 DEG LR STD GRADE B, SMLS
- ⑫ 20 - 6" ELBOW-BUTT FUSION 90 DEG MD PE 2406, SDR 11
- ⑬ 10 - 2" ELBOW-BUTT FUSION, 90 DEG, MD PE 2406
- ⑭ 1 - 6" TEE-WELD STD GRADE B, SMLS, .280"
- ⑮ 6 - 6" TEE-BUTT FUSION MD PE 2406, SDR 11
- ⑯ 5 - 6"X4" REDUCER-BUTT FUSION, MD PE 2406
- ⑰ 5 - 4"X2" REDUCER-BUTT FUSION, MD PE 2406
- ⑱ 13 - 6" CAP-STEEL-WELD, STD WALL
- ⑲ 4 - 2" CAP-STEEL-WELD, STD WALL
- ⑳ 2 - 6" CAP-BUTT FUSION, MD PE 2406
- ㉑ 3 - 2" CAP-BUTT FUSION, MD PE 2406
- ㉒ 1 - 6" COUPLING-ELECTROFUSION, BLACK, PE3408/4710, ASTM D2513/F1055
- ㉓ 2 - 2" COUPLING-ELECTROFUSION, BLACK, PE3408/4710, ASTM D2513/F1055
- ㉔ 3 - 5LB ANODE-EXTRUDED, MAGNESIUM, PACKAGED, 10 FT LEAD, D3 HIGH POT
- ㉕ 8 - 17LB ANODE-EXTRUDED, MAGNESIUM, PACKAGED, 10 FT LEAD, D3 HIGH POT
- ㉖ 48 - 4"X9' ROLL-WRAP-PIPE, MICROCRYSTALLINE #2 WAX, BROWN
- ㉗ 4 - - GALLON-PRIMER-TEMCOAT 3000
- ㉘ 20 - - COATING-PIPE, LIQUID EPOXY, HIGH BUILD, TWO LITER KIT.
- ㉙ 3400' - #10 AWG-WIRE-TRACER, FOR BORING, SOLID COPPER, ASTM B-1, YELLOW
- ㉚ 7 - 52"-84" BOX-VALVE, ABS POLY MATERIAL, SCREW TYPE, ADJUSTABLE HEIGHT, CAST IRON FLANGED, NON-LOCKING LID (FOR CATHODIC TEST POINTS)
- ㉛ 2 - 6" VALVE-BALL, MD PE 2406, SDR11, FULL PORT, BUTT FUSION
- ㉜ 2 - 2" VALVE-BALL, MD PE 2406, SDR11, FULL PORT, BUTT FUSION

MATERIAL TO ABANDON OR REMOVE

- ①X 2,312' of 6" STEEL PIPE (52,55,65,74,97)
- ②X 749' of 6" BARE STEEL PIPE (00,27,46)
- ③X 142' of 6" PLASTIC PIPE (92,95)
- ④X 682' of 2" COATED STEEL PIPE (59,63)
- ⑤X 235' of 2" BARE STEEL PIPE (46)
- ⑥X 559' of 2" PLASTIC PIPE (92,95)
- ⑦X 8 of 6" STEEL VALVE #BA-138,#163,#165,#BA-582, #BA-1470,#BA-1563,#BA-1564,#132516
- ⑧X 1 of 2" STEEL VALVE #147
- ⑨X 1 of 2" PLASTIC VALVE #BA-1485
- ⑩X 1 of REGULATOR STATION #5151

METER SERVICES

COMMERCIAL SERVICE - 5
RESIDENTIAL SERVICE - 12

AREA LOCATION

UDS No. 2012-033

Prepared By: Utility Design Services Inc.



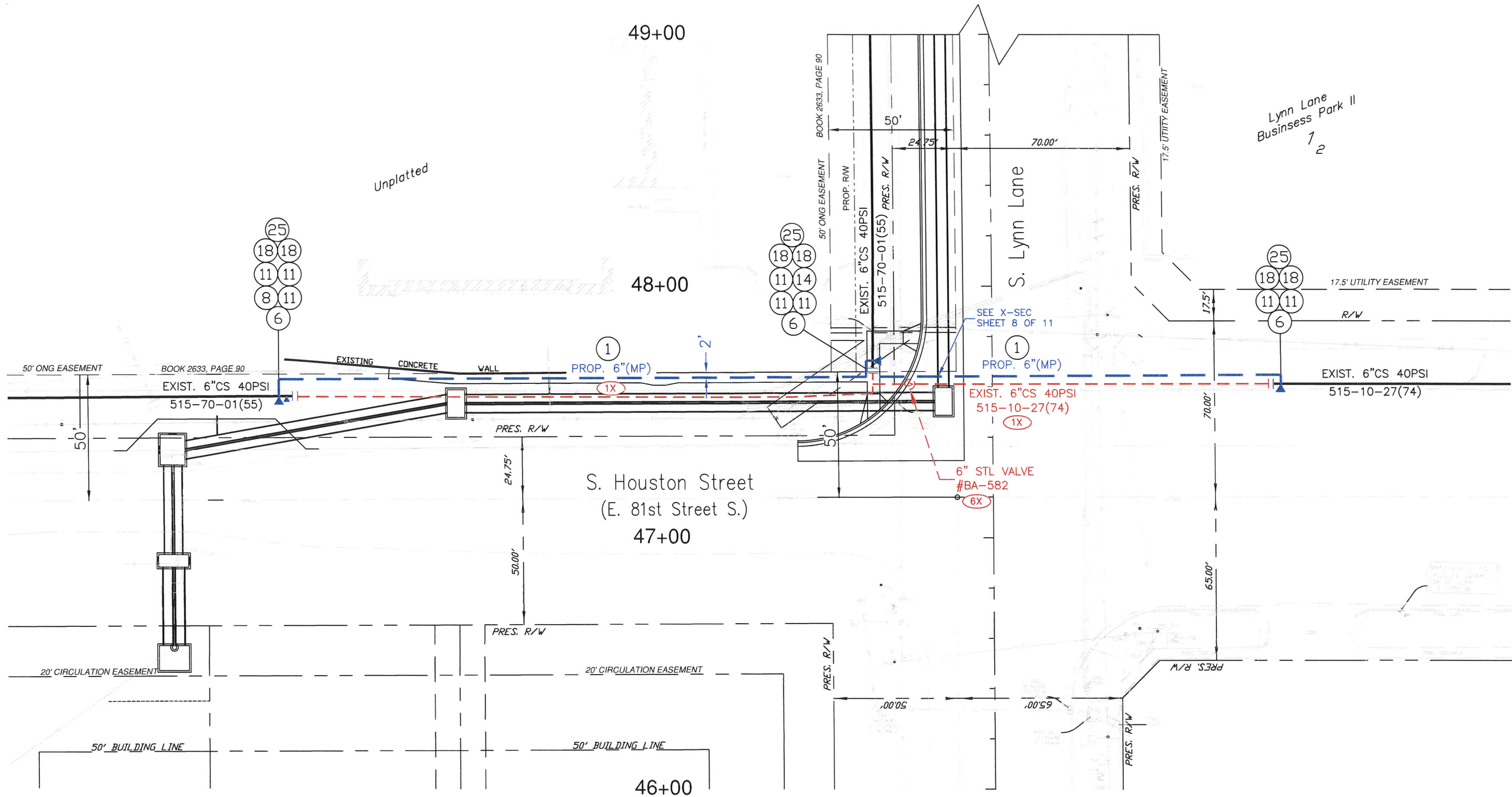
LEGEND

| | |
|-----------------|---------------------|
| ▲ = HOT TAP | △ = EXIST. TAP # |
| ○V = VALVE | — EXISTING |
| ○M = METER | — PROPOSED NEW |
| ○R = REGULATOR | — REMOVE OR ABANDON |
| — — = CUT & CAP | |

GENERAL NOTE:

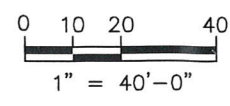
- ALL 6"(MP) AND 6"(PMP) LINE TO BE BURIED A MIN. OF 36" FROM EXISTING GRADE TO TOP OF PIPE UNLESS SHOWN OTHERWISE IN CROSS SECTIONS AND GENERAL NOTES WITHIN THE PLAN DRAWINGS ATTACHED.
- ALL 2"(PMP) LINE TO BE BURIED A MIN. OF 36" FROM EXISTING GRADE TO TOP OF PIPE UNLESS SHOWN OTHERWISE IN CROSS SECTIONS AND GENERAL NOTES WITH THE PLAN DRAWINGS ATTACHED.
- ALL DRIVEWAY AND STREET CROSSINGS WILL BE BURIED A MIN. OF 48" BELOW EXISTING GRADE.

| " " | | | | | | OKLAHOMA NATURAL GAS COMPANY | | | | | |
|---------|----|------|---------------|-----|----|--|-----|----------|------|-----------|------------|
| REVISED | | | PRINTS ISSUED | | | TULSA C.P. | | | | | |
| DATE | BY | ITEM | DATE | NO. | TO | PROP. RELOCATION OF VARIOUS GAS PIPELINES 9TH STREET, HOUSTON ST TO ELGIN AVE. CITY OF BROKEN ARROW PROJECT NO. ST1210 | | | | | |
| | | | | | | DESIGNED | JM | SURVEY | NONE | DATE | 07-20-2016 |
| | | | | | | DRAWN | UDS | FILE NO. | - | SCALE | AS NOTED |
| | | | | | | CHECKED | JM | DWG. NO. | | SHEET NO. | 1 |
| | | | | | | J.O. NO. | | | | OF | 11 |

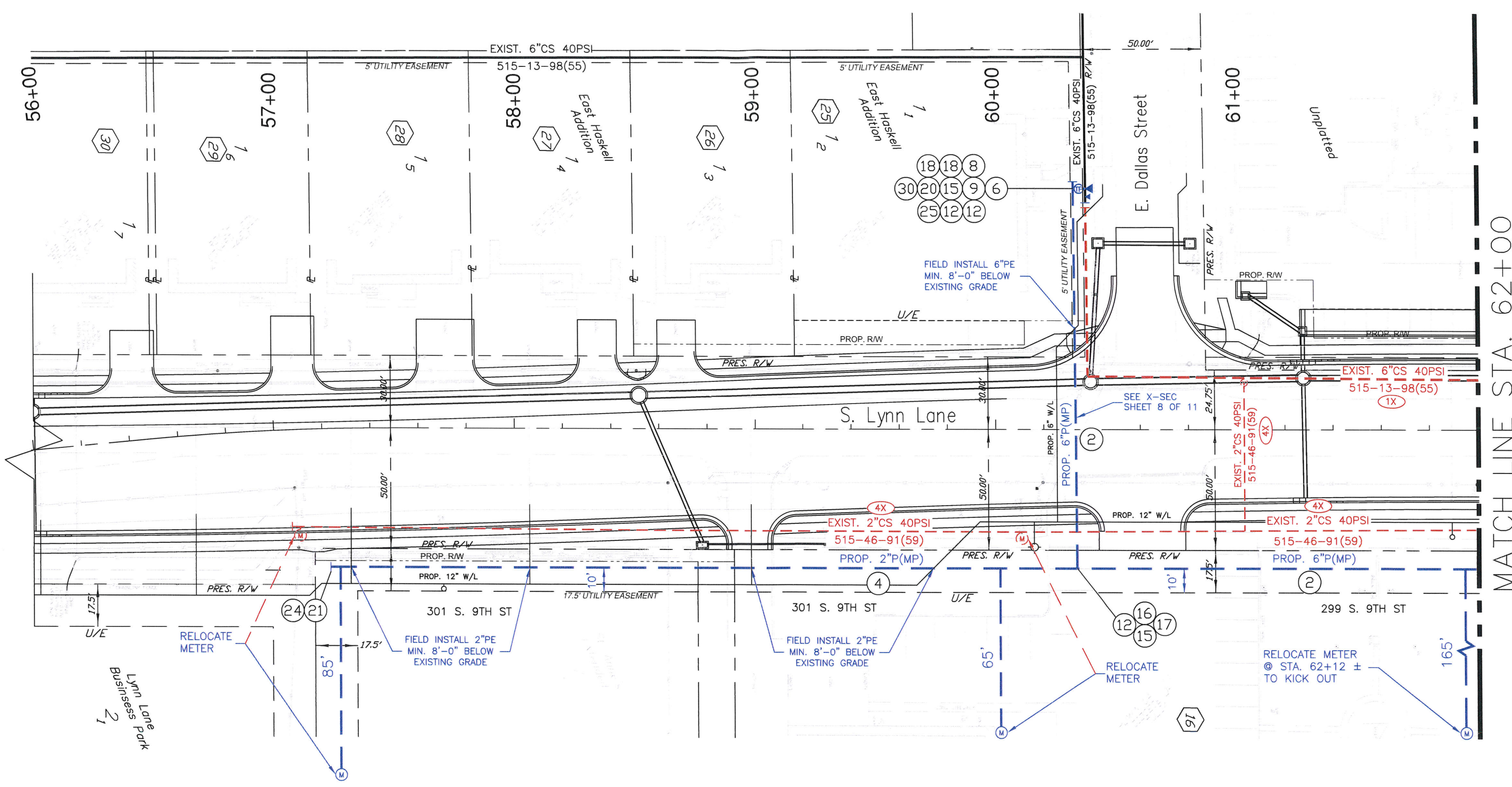


UDS No. 2012-033

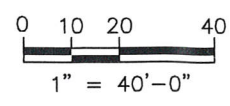
Prepared By: Utility Design Services Inc.



| | | | | | | | | | | | |
|---------|----|------|------|-----|----|--|-----|----------|------|-----------|------------|
| “ ” | | | | | | OKLAHOMA NATURAL GAS COMPANY | | | | | |
| REVISED | | | | | | PRINTS ISSUED | | | | | |
| DATE | BY | ITEM | DATE | NO. | TO | TULSA C.P. | | | | | |
| | | | | | | PROP. RELOCATION OF VARIOUS GAS PIPELINES 9TH STREET, HOUSTON ST TO ELGIN AVE. CITY OF BROKEN ARROW PROJECT NO. ST1210 | | | | | |
| | | | | | | DESIGNED | JM | SURVEY | NONE | DATE | 07-20-2016 |
| | | | | | | DRAWN | UDS | FILE NO. | - | SCALE | AS NOTED |
| | | | | | | CHECKED | JM | DWG. NO. | | SHEET NO. | 2 |
| | | | | | | J.D. NO. | | | | OF | 11 |



MATCH LINE STA. 62+00



UDS No. 2012-033

Prepared By: Utility Design Services Inc.

| | | | | | | | | | |
|----------|-----|----------|------|-----------|------------|--|--|--|------|
| " " " | | | | | | OKLAHOMA NATURAL GAS COMPANY | | | |
| REVISED | | | | | | TULSA CP. | | | |
| DATE | | | BY | | | PRINTS ISSUED | | | DATE |
| | | | | | | | | | |
| | | | | | | PROP. RELOCATION OF VARIOUS GAS PIPELINES 9TH STREET, HOUSTON ST TO ELGIN AVE. CITY OF BROKEN ARROW PROJECT NO. ST1210 | | | |
| DESIGNED | JM | SURVEY | NONE | DATE | 07-20-2016 | | | | |
| DRAWN | UDS | FILE NO. | - | SCALE | AS NOTED | | | | |
| CHECKED | JM | DWG. NO. | | SHEET NO. | | | | | |
| J.D. NO. | | | | DF | 11 | 3 | | | |

MATCH LINE STA. 62+00

MATCH LINE STA. 68+00

63+00

64+00

65+00

66+00

67+00

800 E. DALLAS ST

S. Lynn Lane

109 S. 9TH ST

Unplatted

Unplatted

Unplatted

Lemon Addition

PROP. U/E

PROP. U/E

PROP. R/W

PROP. R/W

EXIST. 2" BS OZ.
1-585-47(46)

EXIST. 2" BS 40 PSI
1-585-47(46)

EXIST. 6" CS 40PSI
515-13-98(55)

EXIST. 6" CS 40PSI
515-31-52(65)

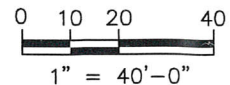
EXIST. 2" CS 40PSI
515-14-00(69)

6" STL VALVE
#132516

SEE X-SEC
SHEET 8 OF 11

RELOCATE METER
CONVERT TO MP

REMOVE
STRUCTURE
(BY OTHERS)



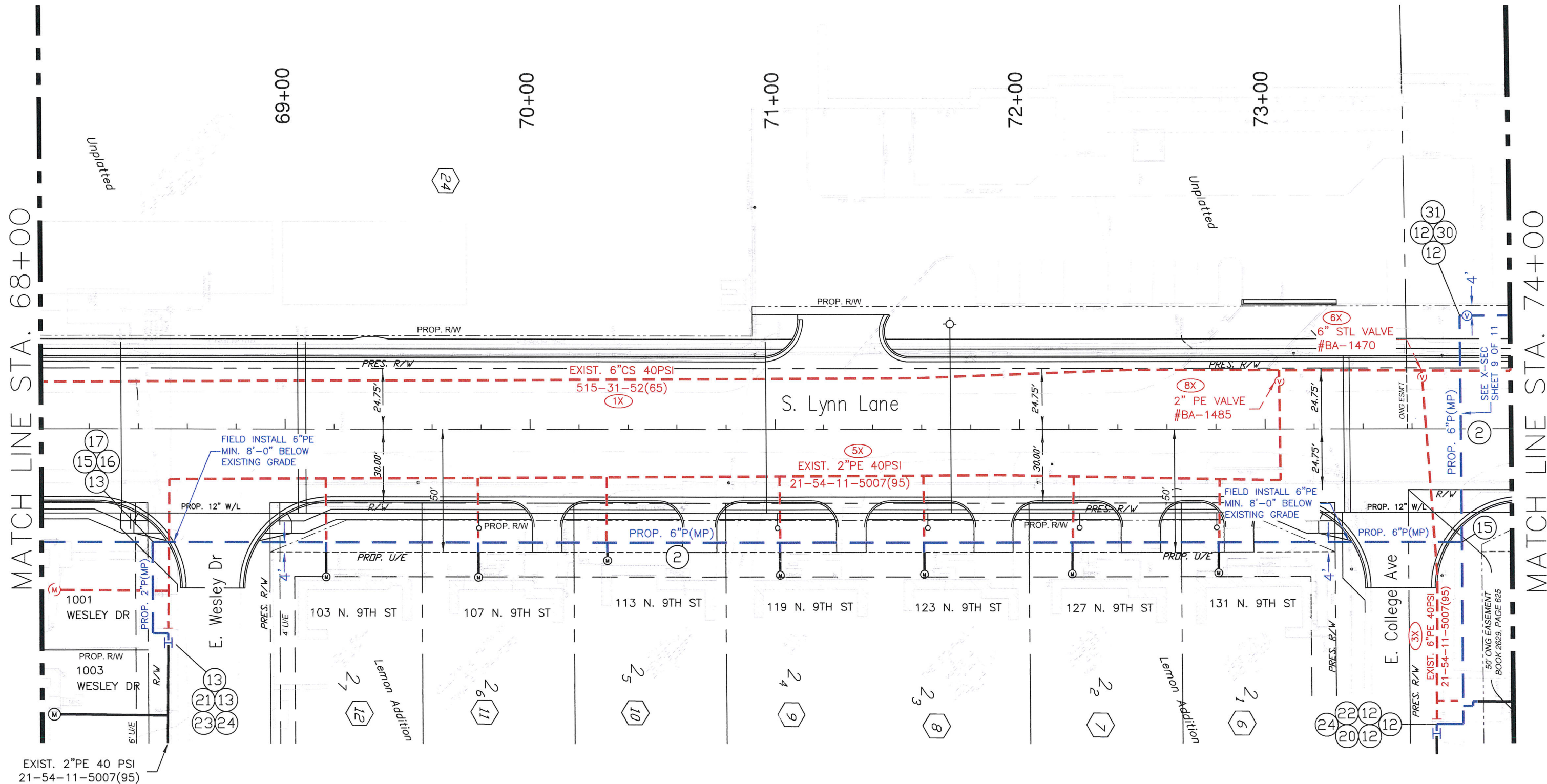
UDS No. 2012-033

Prepared By: Utility Design Services Inc.

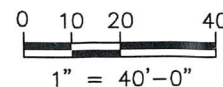
| | | | | | | | | | | | |
|---------|----|------|---------------|-----|----|--|-----|----------|------|-----------|------------|
| " " | | | | | | OKLAHOMA NATURAL GAS COMPANY | | | | | |
| REVISED | | | PRINTS ISSUED | | | TULSA C.P. | | | | | |
| DATE | BY | ITEM | DATE | NO. | TO | PROP. RELOCATION OF VARIOUS GAS PIPELINES 9TH STREET, HOUSTON ST TO ELGIN AVE. CITY OF BROKEN ARROW PROJECT NO. ST1210 | | | | | |
| | | | | | | DESIGNED | JM | SURVEY | NONE | DATE | 07-20-2016 |
| | | | | | | DRAWN | UDS | FILE NO. | - | SCALE | AS NOTED |
| | | | | | | CHECKED | JM | DWG. NO. | | SHEET NO. | 4 |
| | | | | | | J.D. NO. | | | | OF | 11 |

MATCH LINE STA. 68+00

MATCH LINE STA. 74+00



EXIST. 2"PE 40 PSI
21-54-11-5007(95)



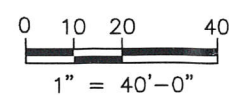
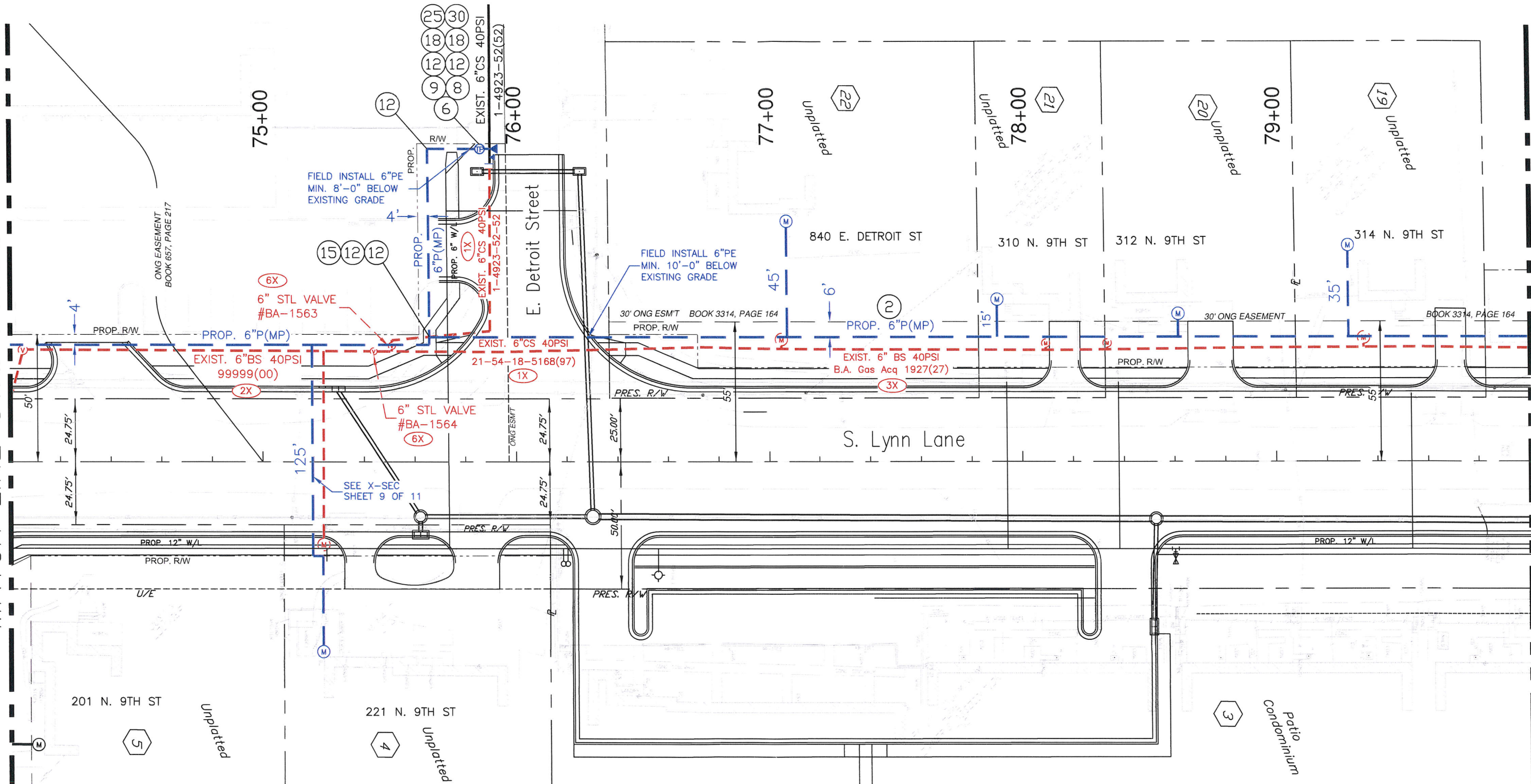
UDS No. 2012-033

Prepared By: Utility Design Services Inc.

| | | | | | | | | | | | |
|------------|----|------|------|-----|----|--|-----|----------|------|-----------|------------|
| " " | | | | | | OKLAHOMA NATURAL GAS COMPANY | | | | | |
| TULSA C.P. | | | | | | TULSA C.P. | | | | | |
| REVISED | | | | | | PRINTS ISSUED | | | | | |
| DATE | BY | ITEM | DATE | NO. | TO | | | | | | |
| | | | | | | | | | | | |
| | | | | | | PROP. RELOCATION OF VARIOUS GAS PIPELINES 9TH STREET, HOUSTON ST TO ELGIN AVE. CITY OF BROKEN ARROW PROJECT NO. ST1210 | | | | | |
| | | | | | | DESIGNED | JM | SURVEY | NONE | DATE | 07-20-2016 |
| | | | | | | DRAWN | UDS | FILE NO. | - | SCALE | AS NOTED |
| | | | | | | CHECKED | JM | DWG. NO. | | SHEET NO. | 5 |
| | | | | | | J.D. NO. | | OF | 11 | | |

MATCH LINE STA. 74+00

MATCH LINE STA. 80+00

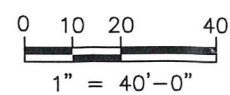
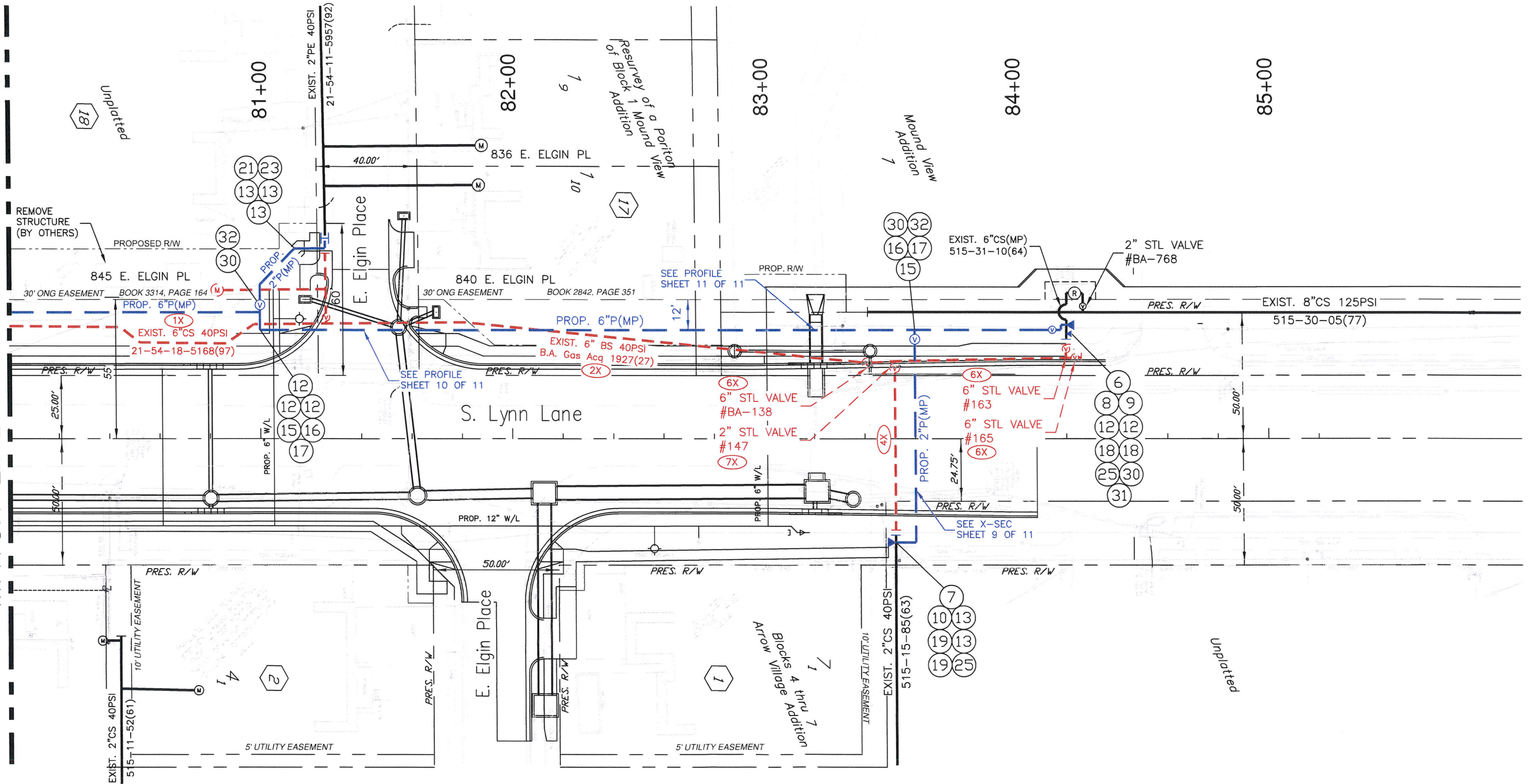


UDS No. 2012-033

Prepared By: Utility Design Services Inc.

| | | | | | | | | | |
|-------------|----|-------------|------|-----------------|----|--|--|--|--|
| " " " | | | | | | OKLAHOMA NATURAL GAS COMPANY | | | |
| | | | | | | TULSA C.P. | | | |
| REVISED | | | | | | PRINTS ISSUED | | | |
| DATE | BY | ITEM | DATE | NO. | TO | | | | |
| | | | | | | | | | |
| | | | | | | PROP. RELOCATION OF VARIOUS GAS PIPELINES 9TH STREET, HOUSTON ST TO ELGIN AVE. CITY OF BROKEN ARROW PROJECT NO. ST1210 | | | |
| DESIGNED JM | | SURVEY NONE | | DATE 07-20-2016 | | | | | |
| DRAWN UDS | | FILE NO. - | | SCALE AS NOTED | | | | | |
| CHECKED JM | | DWG. NO. | | SHEET NO. | | | | | |
| J.O. NO. | | | | OF 11 | | 6 | | | |

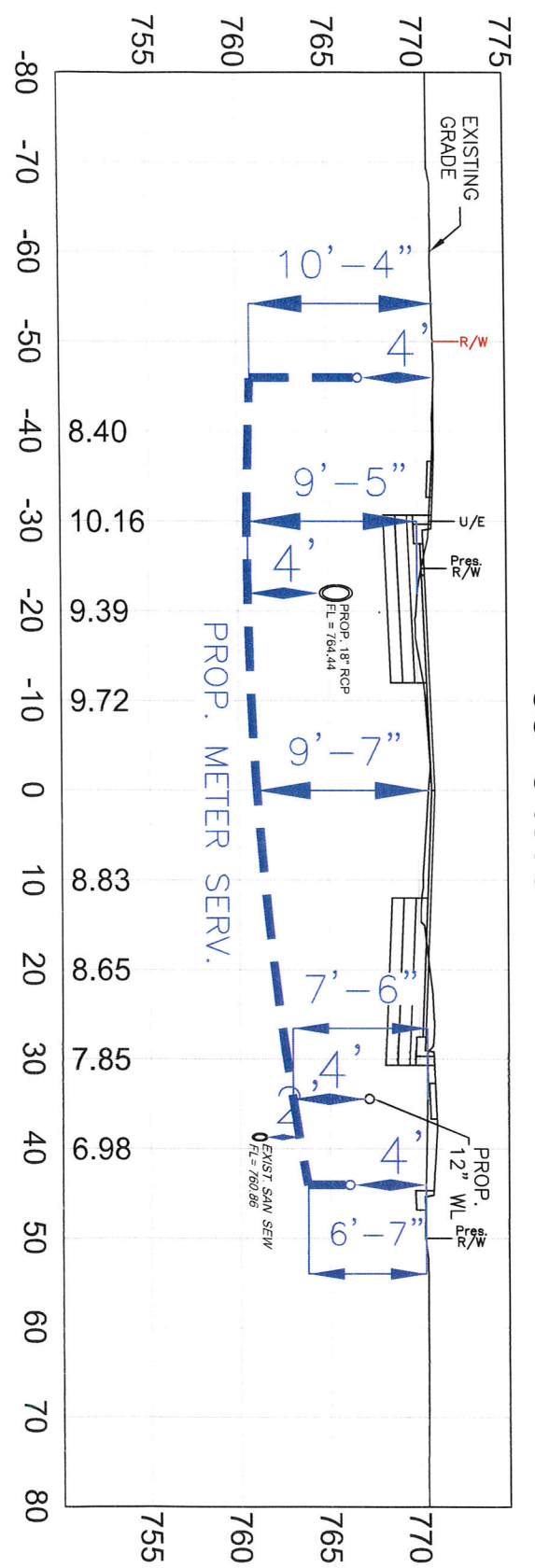
MATCH LINE STA. 80+00



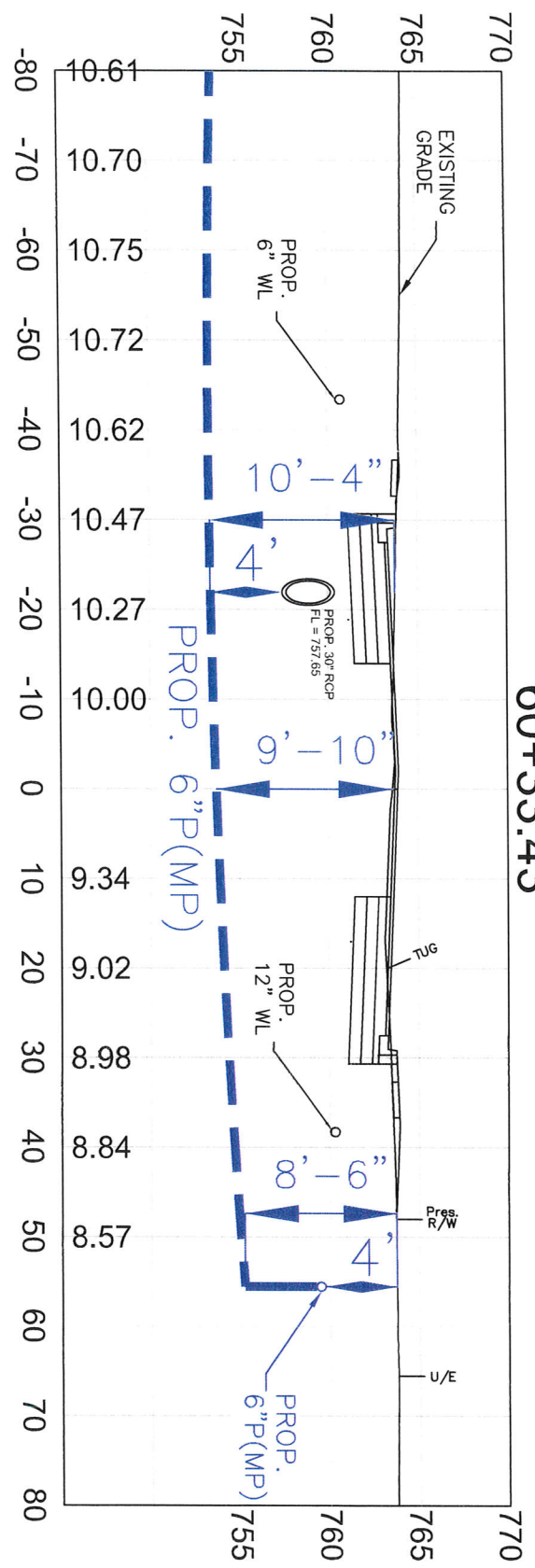
UDS No. 2012-033

Prepared By: Utility Design Services Inc.

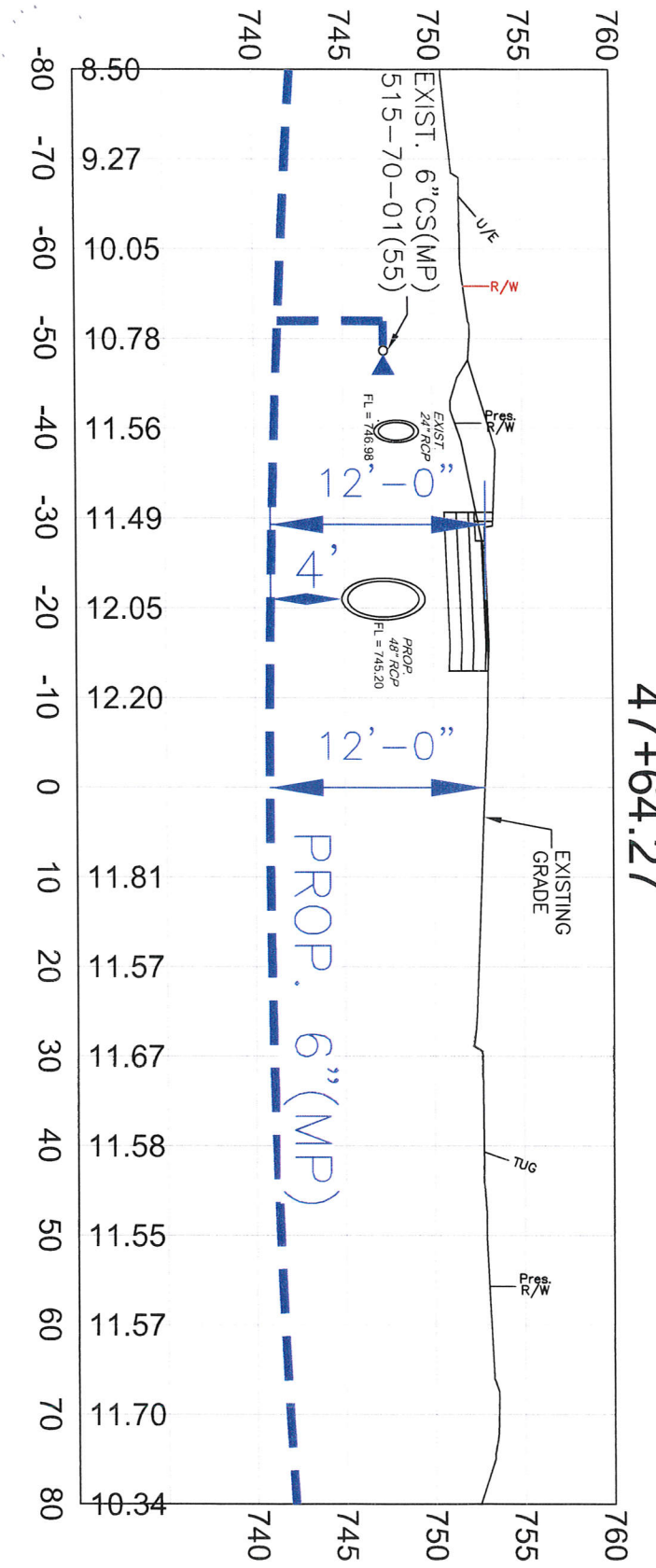
| | | | | | | | | | | | | |
|----------|-----|------|---------------|------|----|--|------------|--|--|--|--|--|
| " " | | | | | | OKLAHOMA NATURAL GAS COMPANY | | | | | | |
| | | | | | | TULSA C.P. | | | | | | |
| REVISED | | | PRINTS ISSUED | | | PROP. RELOCATION OF VARIOUS GAS PIPELINES 9TH STREET, HOUSTON ST TO ELGIN AVE. CITY OF BROKEN ARROW PROJECT NO. ST1210 | | | | | | |
| DATE | BY | ITEM | DATE | NO. | TO | | | | | | | |
| | | | | | | | | | | | | |
| | | | | | | | | | | | | |
| | | | | | | | | | | | | |
| DESIGNED | JM | | SURVEY | NONE | | DATE | 07-20-2016 | | | | | |
| DRAWN | UDS | | FILE NO. | - | | SCALE | AS NOTED | | | | | |
| CHECKED | JM | | DWG. NO. | | | SHEET NO. | 7 | | | | | |
| J.D. NO. | | | | | | OF | 11 | | | | | |



65+91.18



60+33.43

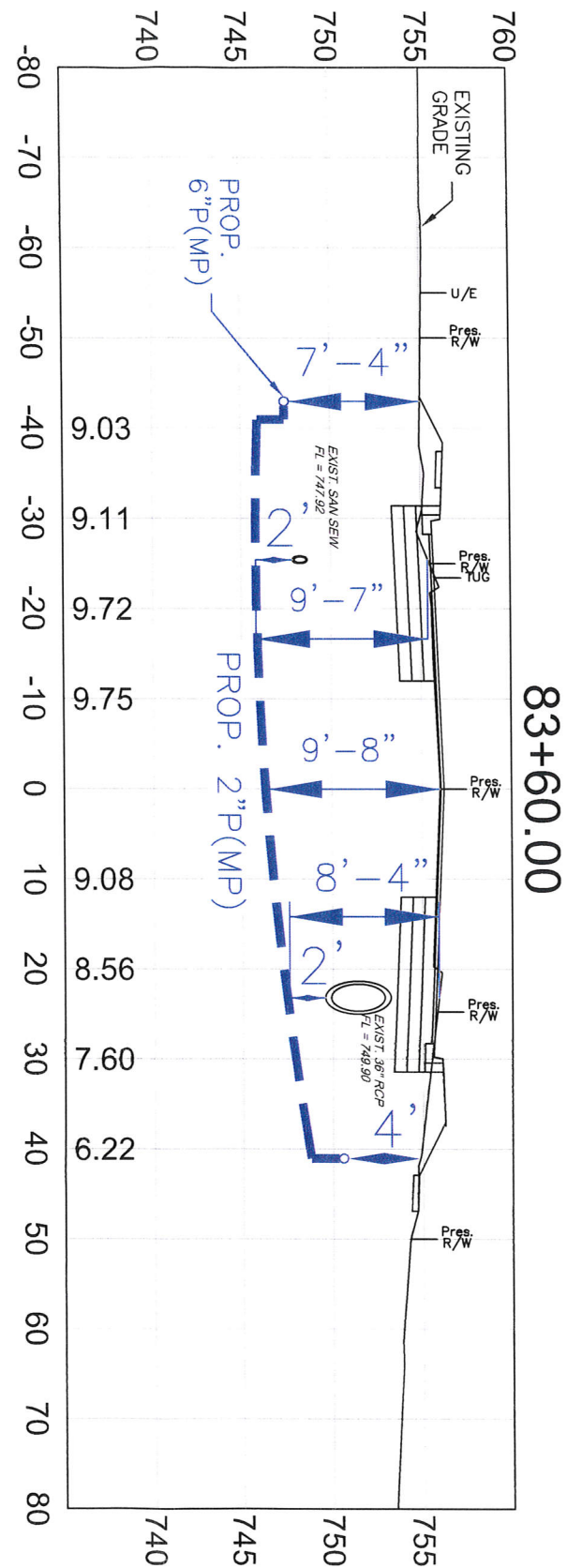


47+64.27

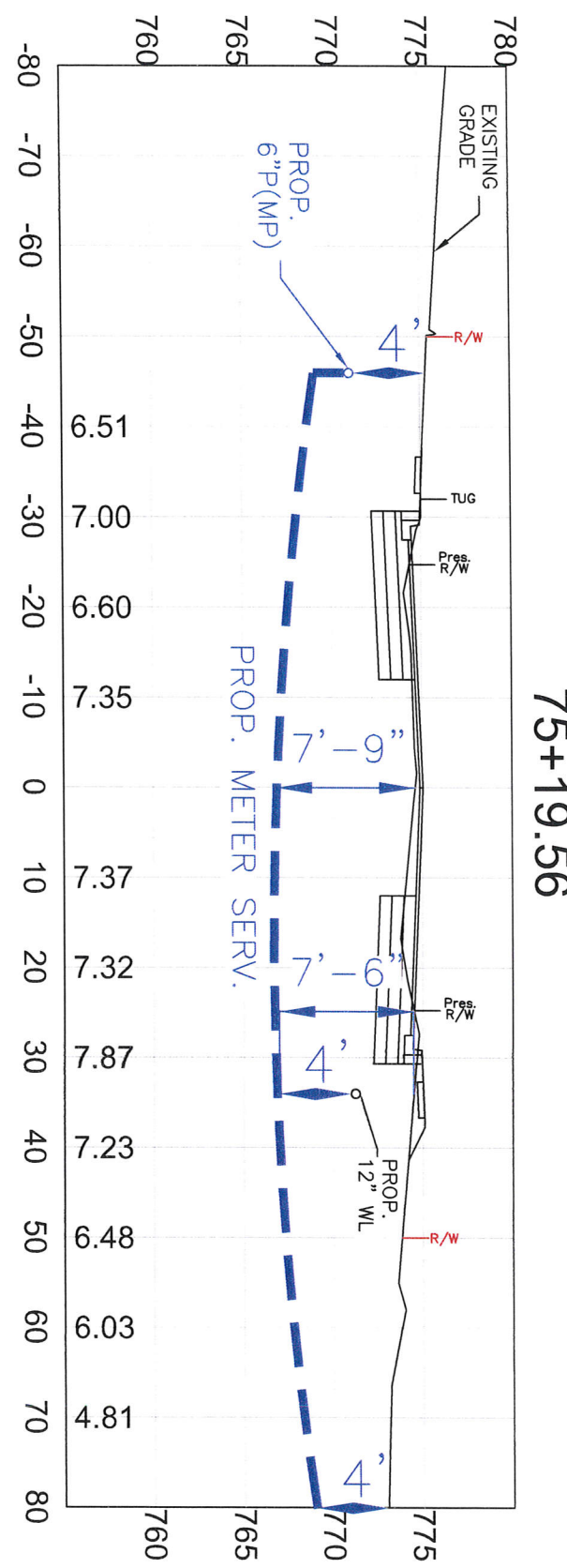
UDS No. 2012-033

Prepared By: Utility Design Services Inc.

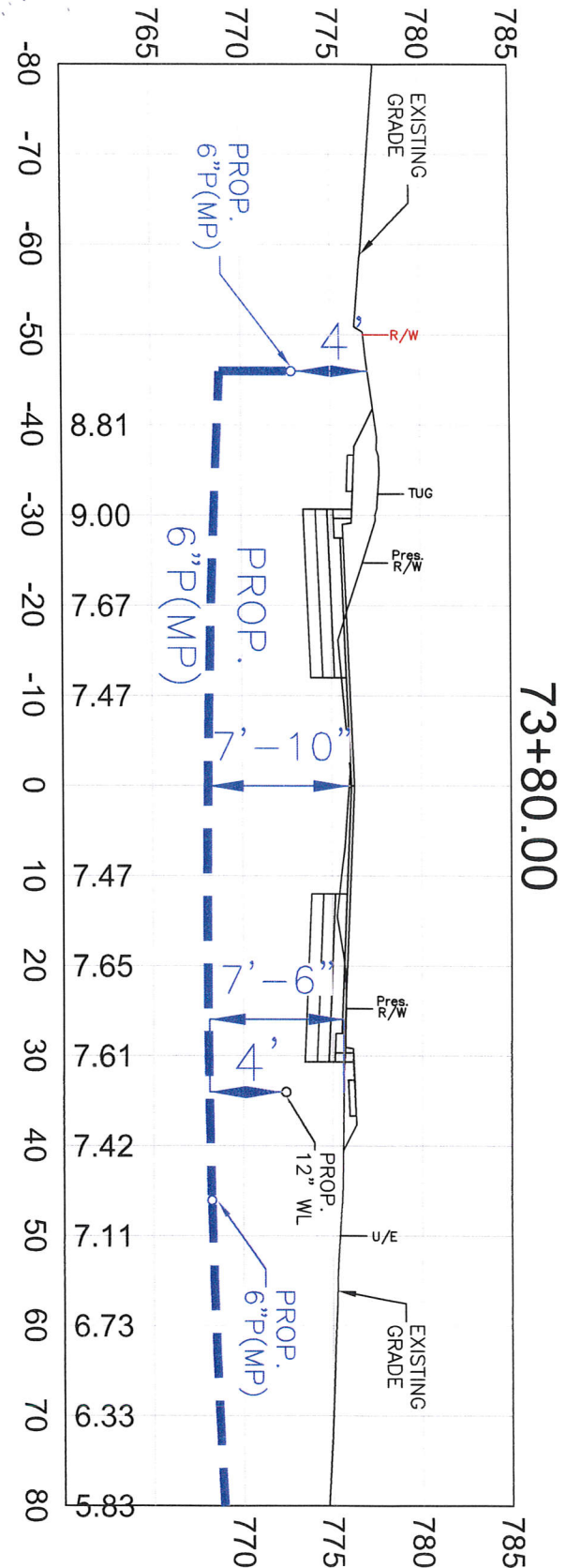
| | | | | | | | | | |
|----------|--|-----|--|----------|--|--|--|-----------------|--|
| " " | | | | | | OKLAHOMA NATURAL GAS COMPANY | | | |
| | | | | | | TULSA C.P. | | | |
| | | | | | | PROP. RELOCATION OF VARIOUS GAS PIPELINES 9TH STREET, HOUSTON ST TO ELGIN AVE. CITY OF BROKEN ARROW PROJECT NO. ST1210 | | | |
| DESIGNED | | JM | | SURVEY | | NONE | | DATE 07-20-2016 | |
| DRAWN | | UDS | | FILE NO. | | - | | SCALE AS NOTED | |
| CHECKED | | JM | | DWG. NO. | | | | SHEET NO. | |
| J.D. NO. | | | | | | | | OF 11 8 | |



83+60.00



75+19.56

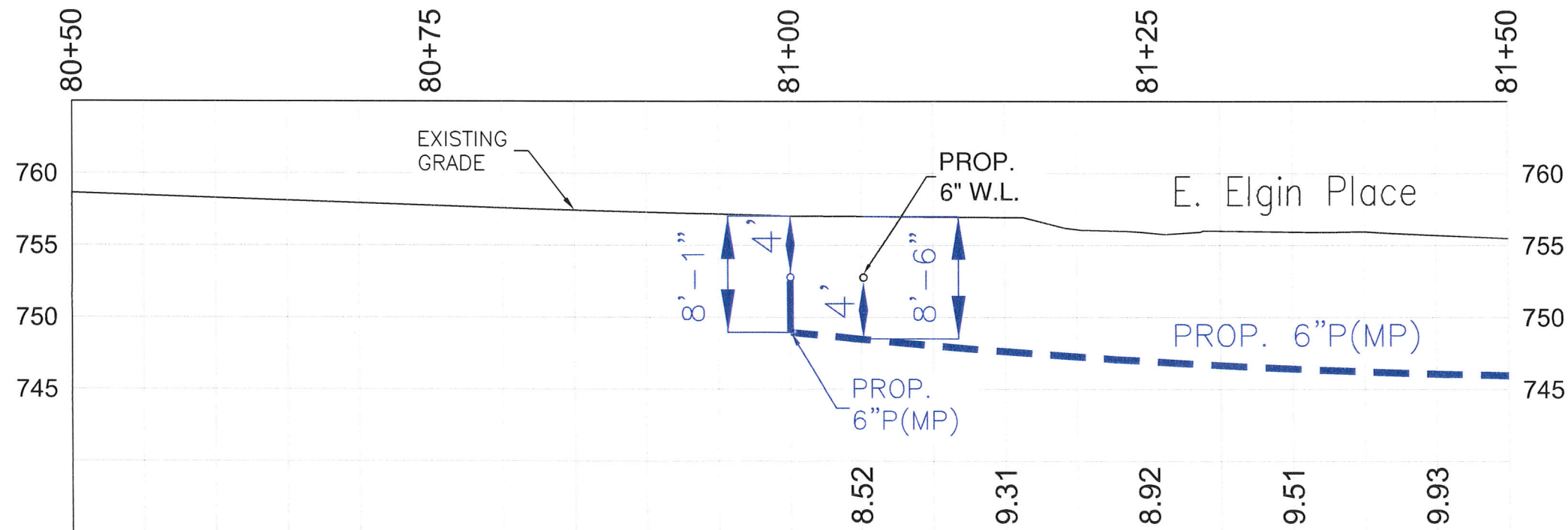
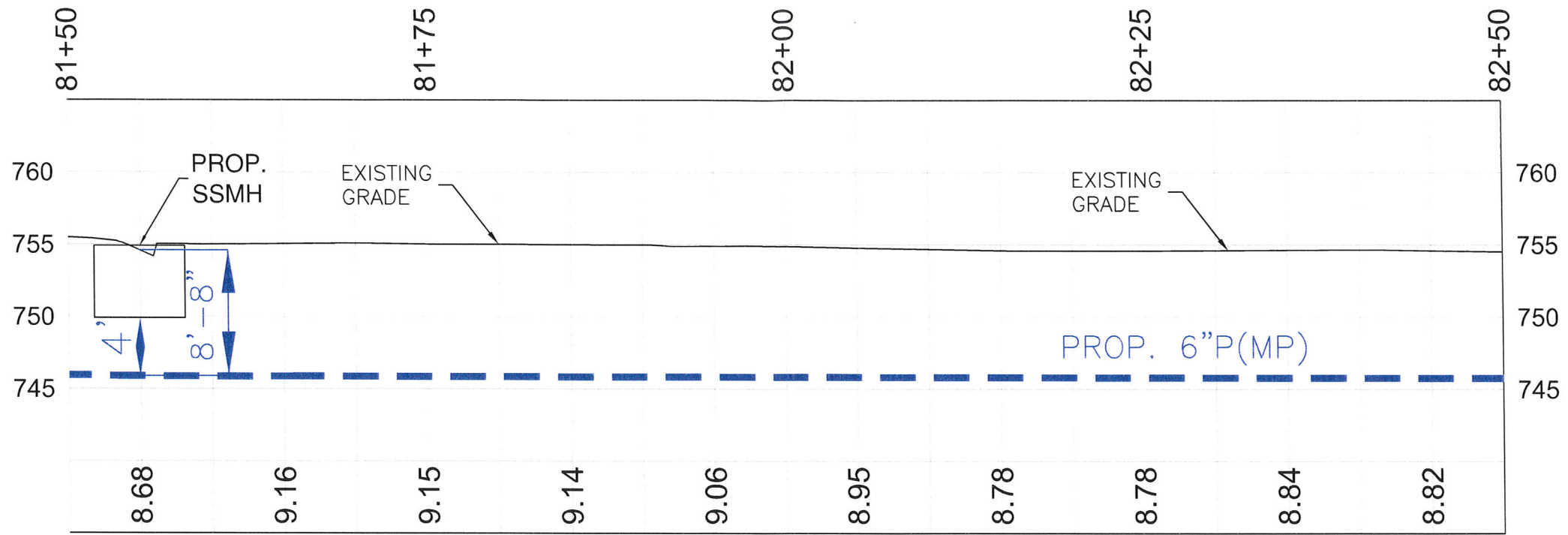


73+80.00

UDS No. 2012-033

Prepared By: Utility Design Services Inc.

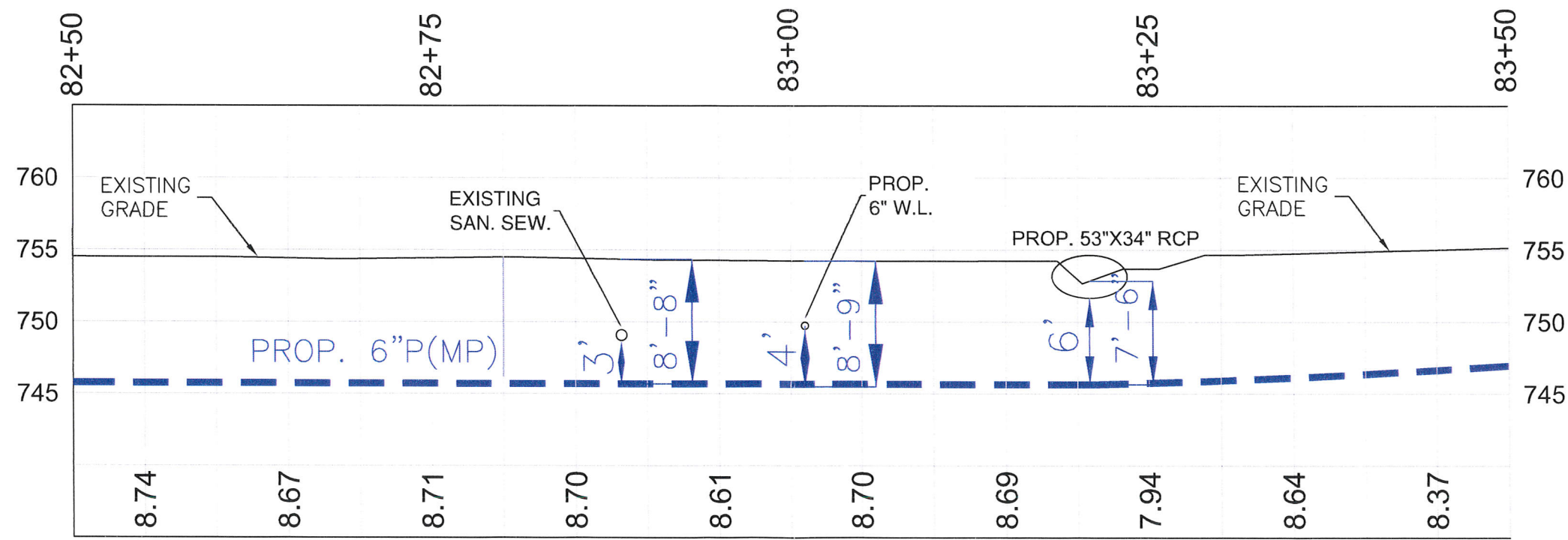
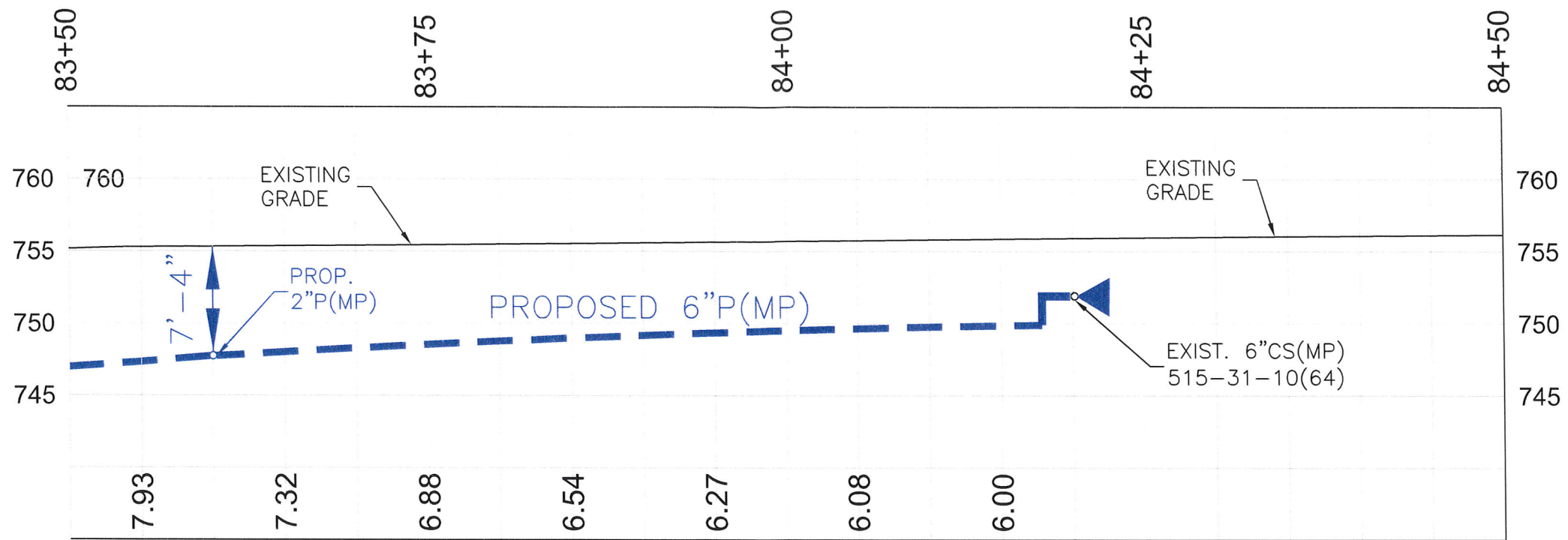
| | | | | | | | | | | | |
|---------|----|------|---------------|-----|----|--|-----|----------|------|-----------|------------|
| " " | | | | | | OKLAHOMA NATURAL GAS COMPANY | | | | | |
| REVISED | | | PRINTS ISSUED | | | TULSA C.P. | | | | | |
| DATE | BY | ITEM | DATE | NO. | TO | PROP. RELOCATION OF VARIOUS GAS PIPELINES 9TH STREET, HOUSTON ST TO ELGIN AVE. CITY OF BROKEN ARROW PROJECT NO. ST1210 | | | | | |
| | | | | | | DESIGNED | JM | SURVEY | NONE | DATE | 07-20-2016 |
| | | | | | | DRAWN | UDS | FILE NO. | - | SCALE | AS NOTED |
| | | | | | | CHECKED | JM | DWG. NO. | | SHEET NO. | 9 |
| | | | | | | J.D. NO. | | | | OF | 11 |



UDS No. 2012-033

Prepared By: Utility Design Services Inc.

| | | | | | | | | | | | |
|---------|----|------|---------------|-----|----|--|-----|----------|------|-----------|------------|
| " " | | | | | | OKLAHOMA NATURAL GAS COMPANY | | | | | |
| REVISED | | | PRINTS ISSUED | | | TULSA C.P. | | | | | |
| DATE | BY | ITEM | DATE | NO. | TO | PROP. RELOCATION OF VARIOUS GAS PIPELINES 9TH STREET, HOUSTON ST TO ELGIN AVE. CITY OF BROKEN ARROW PROJECT NO. ST1210 | | | | | |
| | | | | | | DESIGNED | JM | SURVEY | NONE | DATE | 07-20-2016 |
| | | | | | | DRAWN | UDS | FILE NO. | - | SCALE | AS NOTED |
| | | | | | | CHECKED | | DWG. NO. | | SHEET NO. | 10 |
| | | | | | | J.O. NO. | | | | OF | 11 |



UDS No. 2012-033

Prepared By: Utility Design Services Inc.

| | | | | | | | | | | | |
|---------|----|------|---------------|-----|----|--|-----|----------|------|-----------|--------------|
| “ ” | | | | | | OKLAHOMA NATURAL GAS COMPANY | | | | | |
| REVISED | | | PRINTS ISSUED | | | TULSA C.P. | | | | | |
| DATE | BY | ITEM | DATE | NO. | TO | PROP. RELOCATION OF VARIOUS GAS PIPELINES 9TH STREET, HOUSTON ST TO ELGIN AVE. CITY OF BROKEN ARROW PROJECT NO. ST1210 | | | | | |
| | | | | | | DESIGNED | JM | SURVEY | NONE | DATE | 07-20-2016 |
| | | | | | | DRAWN | UDS | FILE NO. | - | SCALE | AS NOTED |
| | | | | | | CHECKED | JM | DWG. NO. | | SHEET NO. | |
| | | | | | | J.D. NO. | | | | OF | 11 11 |