

APPROVED TREE LIST			
Common Name	Note	Botanical Name	Recommendations & Cultivars
Large Trees: Trees that mature over sixty feet (60') in height. These trees need spacing of at least thirty-five feet (35').			
Cypress, Bald	**	Taxodium disticum	
Ginko (male)	**	Ginko biloba	Priston Gold, Autumn Gold, Pendula
Hackberry, Common		Celtis occidentalis	Chicagoland, Dieta, Windy City
Oak, Black		Quercus velutina	
Oak, Bur		Quercus macrocarpa	
Oak, Northern Red		Quercus rubra	
Oak, Pin		Quercus palustris	Plant only in Bottomlands
Oak, Shumard	**	Quercus shumardi	
Oak, Southern Red		Quercus falcate	
Oak, Swamp White		Quercus bicolor	
Oak, Water		Quercus nigra	
Oak, White		Quercus alba	
Oak, Willow		Quercus phellos	
Pine, Limber		flexilis	
Pine, Loblolly		Pinus taeda	
Pine, Shortleaf		Pinus echinata	
Planetree, London		Platanus x acerifolia	Bloodgood, Columbia, Liberty, Yarwood
Tulip Tree		Liriodendron tulipifera	
Medium Trees: Trees with a mature size from thirty feet (30') to sixty feet (60'). These trees need a spacing of at least twenty-five feet (25').			
Ash, Green* (improved cultivars)	**	Fraxinus pennsylvanica	"Urbanite"
Cedar, Atlas		Cedrus atlantica	
Cedar, Western Red		Thuja plicata	
Chittamwood		Bumelia lanuginosa	
Coffeetree, Kentucky (male)		Gymnocladus dioica	Espresso, Prairie Titan, Stately Manor
Cypress, Arizona		Cupressus arizonica	
Cypress, Leyland		Cupressocyparis leylandii	
Birch, River		Betula nigra	
Dogwood, Kouse		Cornus kousa	
Elm, Lacebark	**	Ulmus parvifolia	Allee, Athena, True Green and many more
Elm, Cedar		Ulmus crassifolia	

Common Name	Note	Botanical Name	Recommendations & Cultivars
Goldenrain Tree* (improved Cultivars)	**	Koeleruteria paniculata	Fastigiata, September, Stadher's Hill, Panicked
Hackberry, Sugar		Celtis, laevigata	
Hophornbeam, Eastern		Ostrya virginiana	
Hornbeam, European		Carpinus betulus	
Japanese Pagoda Tree		Sophora japonica	
Juniper, Rocky Mountain		Juniperus scopulorum	
Linden, Greenspire* (improved cultivars)	**	Tilia cordata "Greenspire"	Bicentennial, Bhijje, Shamrock, Turesi
Magnolia, Sweetbay		Magnolia virginiana	
Maple, Norway * (improved cultivars)		Acer platanoides	
Maple, Red* (improved cultivars)		Acer rubrum	
Maple, Shantung		Acer truncatum	Norwegian Sunset, Pacific Sunset
Maple, Sugar		Acer saccharum	Caddo, Legacy, Green Mountain
Maple, October Glory			
Mulberry, White (male)		Morus alba 'Fruitless'	
Oak, Blackjack		Quercus marilandica	
Oak, Chinquapin	**	Quercus muehlenbergi	
Oak, English	**	Quercus robur	
Oak, Live		Quercus virginiana	
Oak, Post		Quercus stellata	
Oak, Sawtooth	**	Quercus acutissima	
Pear, Callary* (improved cultivars)	**	Pyrus calleryana var.	Aristocrat, Autumn Blaze, Callary, Cleveland Select, Chanticleer, Trinity, Capitol
Pine, Austrian		Pinus nigra	
Pine, Japanese Black		Pinus thunbergiana	
Pistache, Chinese	**	Pistacia chinensis	
Western Soapberry		Sapindus drummondii	
Zelkova, Japanese		Zelkova serrata	Aurea, Autumn Glow, Spring Grove, etc.
Small Trees: Trees with a mature size of less than thirty feet (30'). These trees need a spacing of at least fifteen feet (15').			
Cherry, Japanese		Prunus serrulata	
Chokecherry		Prunus virginiana	
Crabapple, Flowering* (improved cultivars)	**	Malus spp.	20 - 30 Crabapple Species
Crapemyrtle* (improved cultivars)	***	Lagerstromia indica	Many Various Species
Hawthorn, Washington* (improved cultivar)		Crataegus phaenopyrum	

Common Name	Note	Botanical Name	Recommendations & Cultivars
Holly, Deciduous	***	Ilex deciduas	Warren's Red
Foster Holly	***	Ilex x attenuata	
Holly, American		Ilex opaca	
Holly, Yaupon	***	Ilex vomitoria	
Hornbeam, American		Carpinus caroliniana	
LiIac, Japanese		Syringus reticulata	
Magolia, Saucer		Magnolia soulangiana	
Maple, Amur		Acer ginnala	
Mockorange, Sweet		Philadelphus coronaries	
Ninebark, Purple "Diabolo"		Physocarpus opulifolius	
Redbud, Eastern	**	Cercis canadensis	
Redbud, Oklahoma* (improved cultivar)	**	Cercis reniformis	
Russian Olive	**	Elaeagnus angustifolia	
Serviceberry, Downy		Amelanchier arborea	
Smoketree	**	Cotinus coggygia	
Whitebud, Eastern		Cercis canadensis, alba	
NOTES:			
	*	Improved Cultivars available	
	**	Best trees for Parking Lot Application	
	***	Requires 1 plant per 25' of Required Landscape Edge	

APPROVED SHRUB LIST:

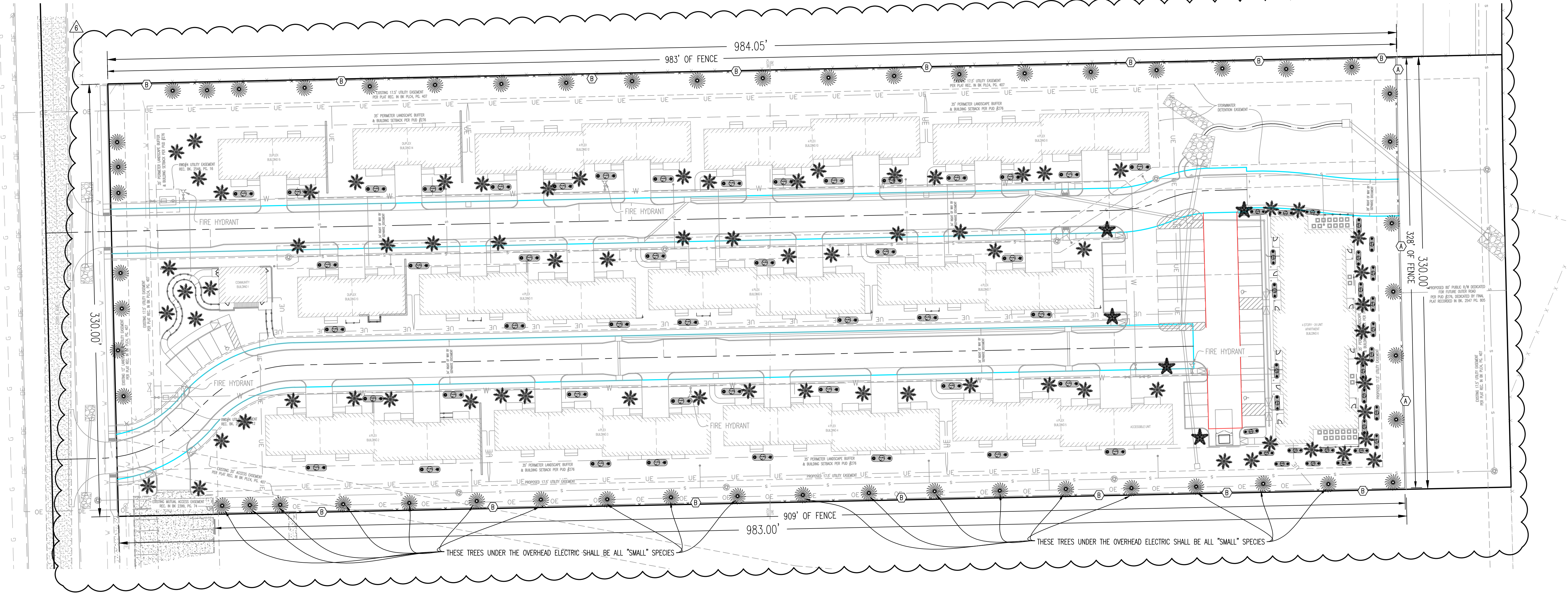
ARONIA MELANOCARPA – BLACK CHOKEBERRY
CALLICARPA AMERICANA – AMERICAN BEAUTY BERRY
CEANOTHUS AMERICANUS – NEW JERSEY TEA
CORYLUS AMERICANA – HAZELNUT
HYDRANGEA ARBORESCENS – WILD HYDRANGEA
ITEA VIRGINICA – VIRGINIA SWEETSPICE
RHUS AROMATICA – FRAGRANT SUMAC
RHUS COPALLINA
RIBES ODORATUM – GOLDEN CURRENT
ILEX VERTICILLATA – WINTERBERRY
CALLICARPA AMERICANA – BEAUTYBERRY
VIBURNUM X FRAGRENSE PRAGUE VIBURNUM

LANDSCAPE COMPLIANCE:

5.2 B.1 a.ii. - TREE REQUIREMENTS		
ONE (1) TREE PER 50 LINEAL FEET OF LANDSCAPED EDGE 2,627 LINEAL FEET OF LANDSCAPED EDGE @ 1 TREE PER 50 FEET = (2" MIN. CALIPER AND ON THE CITY'S APPROVED TREE LIST) USE AN EVEN MIXTURE OF THESE SPECIES: WHITE OAK, RIVER BIRCH, RED MAPLE & EASTERN REDBUD USE ONLY SMALL TREES UNDER OVERHEAD ELECTRIC: EASTERN REDBUD, SAUCER MAGNOLIA & FLOWERING CRABAPPLE	53 TREES	
5.2 B.1 a.iii. (A) - PARKING LOTS ABUTTING LANDSCAPED EDGE		
10 SHRUBS PER 50 LINEAL FEET OF PARKING ABUTTING LANDSCAPED EDGE (AND LANDSCAPED EDGE BE LESS THAN 35 FEET)	0 LINEAL FEET	0 SHRUBS
5.2 B.1 a.iv. - RM DISTRICT LANDSCAPING		
ONE (1) TREE USE AN EVEN MIXTURE OF THESE SPECIES: GREEN ASH, KENTUCKY COFFEETREE, SWEETBAY MAGNOLIA, JAPANESE ZELKOVA, JAPANESE CHERRY, EASTERN WHITEBUD, & SAUCER MAGNOLIA & THREE (3) SHRUBS PER UNIT (SHRUBS MUST BE 3 GALLON MINIMUM) <-- SHRUB PLANTING SYMBOL CONTAINS 3 SHRUBS WITHIN A MULCH BED USE A MIXTURE OF ANY SHRUBS WITHIN THE "APPROVED SHRUB LIST"	74 UNITS	74 TREES
		222 SHRUBS
5.2 B.1.c.i(A) - MULTI-FAMILY PARKING LOT TREES		
ONE (1) TREE PER 10 PARKING SPACES (2" MIN. CALIPER AND ON THE CITY'S APPROVED TREE LIST AND PLANTED WITHIN 15' OF PARKING) USE A MIXTURE OF THESE SPECIES: SMOKETREE, FLOWERING CRAB APPLE & OKLAHOMA REDBUD	46 SPACES	5 TREES
5.2 E.2 a - FENCING ALONG HIGHWAY		
6 FOOT TALL FENCE ADJACENT TO HIGHWAY FRONTAGE (LOCATED 1' INSIDE PROPERTY LINE)	328' OF 6' FENCE	
5.2 E.2.B. - PERIMETER FENCING		
6 FOOT TALL FENCE ADJACENT TO AGRICULTURAL ZONING (LOCATED 1' INSIDE PROPERTY LINE)	1892' OF 6' FENCE	

LANDSCAPING NOTES:

- ALL TREES SHALL BE AT LEAST 10 FEET AWAY FROM A FIRE HYDRANT.
- ALL MEDIUM TO LARGE TREES SHALL BE AT LEAST 20 FEET AWAY FROM ANY OVERHEAD UTILITY LINES.
- ALL MEDIUM TO LARGE TREES SHALL BE AT LEAST 5 FEET AWAY FROM ANY PUBLIC UNDERGROUND UTILITY LINE.
- TREE AND SHRUB SPECIES MAY BE SUBSTITUTED WITH OTHER SPECIES WITHIN THE SAME CATEGORY OF THE "APPROVED TREE LIST" OR "APPROVED SHRUB LIST" ON THIS SHEET. APPROVAL OF ANY SUBSTITUTIONS MUST BE APPROVED BY THE CITY OF BROKEN ARROW.
- LANDSCAPING CONTRACTOR SHALL COORDINATE UTILITY LOCATES AND IDENTIFY ALL UNDERGROUND UTILITIES WITHIN THE LIMITS OF THEIR WORK AREA BEFORE ANY EXCAVATION MAY BEGIN.
- SHRUB BEDS & TREE RINGS SHALL BE MULCHED WITH 3" OF DYED BROWN HARDWOOD MULCH.
- LANDSCAPE CONTRACTOR SHALL GUARANTEE ALL PLANT MATERIALS FOR A PERIOD OF TWELVE MONTHS.



REVISIONS:

NO.	DATE
ORIGINAL	08/19/2019
3	05/12/2020
6	08/31/2020

THIS SHEET HAS BEEN SIGNED, SEALED AND DATED ELECTRONICALLY

REGISTERED PROFESSIONAL
TIMOTHY D. CROCKETT
OKLAHOMA

TIMOTHY D. CROCKETT
OK LICENSE - 26037

PREPARED BY:
CROCKETT
ENGINEERING & CONSULTANTS
1000 W. Wilson Blvd., Bldg. 1
Columbia, Missouri 65203
(314) 447-0292
www.crockettengineering.com
Crockett Engineering Consultants, LLC
Oklahoma Certificate of Authority #45594
Exp. 03/31/2025, State Seal Exp. 03/31/2025

OWNER:
DHTC DEVELOPMENT, LLC
1800 E. LARK LANE
NOVA, MO 65714

DRAWING INCLUDES:

LANDSCAPING PLAN

DESIGNED: ATG
DRAWN: ATG
PROJECT NO.: 170555
SHEET:
CE 16A