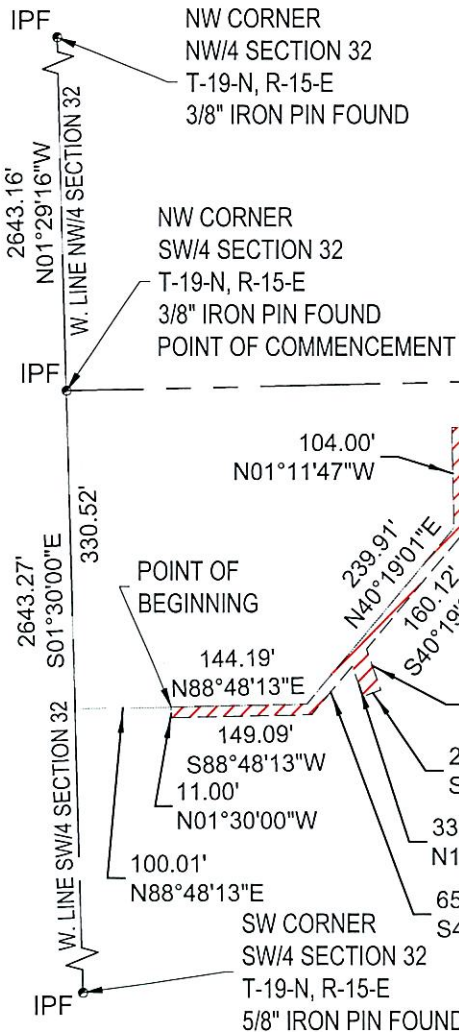
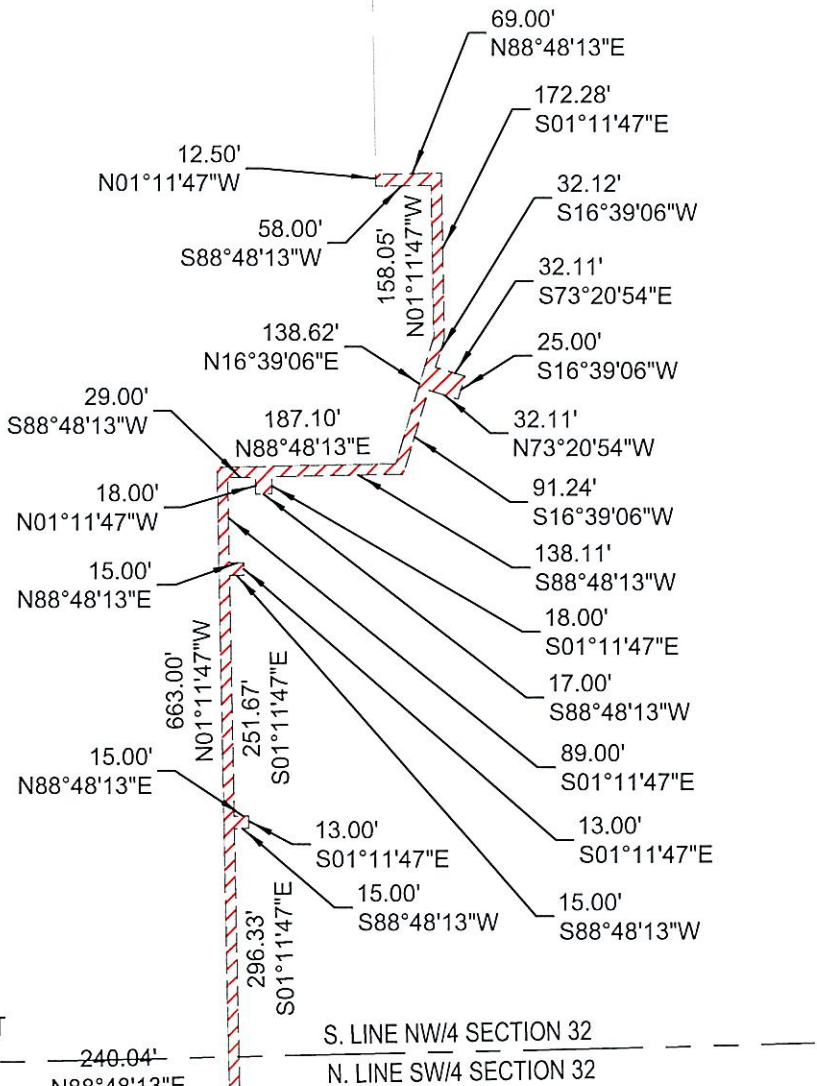
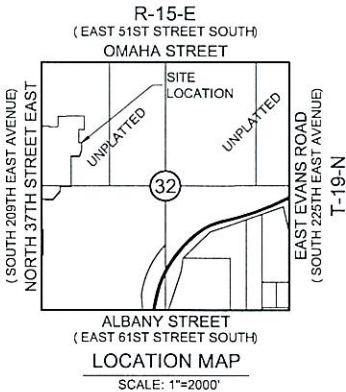


Exhibit C

OFFSITE UTILITY EASEMENT
(PAGE 1 OF 2)



0 100 200
DRAWING SCALE: 1" = 200'



- LEGEND**
- IPF - IRON PIN FOUND
 - IPS - IRON PIN SET (W/ CAP STAMPED CA 6318)
 - PROPOSED UTILITY EASEMENT

BASIS OF BEARINGS IS THE OKLAHOMA STATE PLANE COORDINATE SYSTEM (ZONE 3501 NORTH) WITH THE EAST LINE OF SW/4 BEING S 01°29'16" E.

AAB Engineering, LLC



Engineering • Surveying • Land Planning

PO Box 2135 Sand Springs, OK 74063
OK CAM6318 Exp. June 30, 2025
KS CAR2292 Exp. Dec. 31, 2025
Office: (918) 514-4283 Fax: (918) 514-4288

PLOT DATE: Mon, 30 Sep 2024 FILE: P:\19151332-THE CEDARS @ THE PRESERVE \INSURVEY (IN CEDARS FOLDER)\1915.32 CEDARS AT THE PRESERVE II OFFSITE EASEMENTS

Exhibit C

OFFSITE UTILITY EASEMENT

(PAGE 2 OF 2)

LEGAL DESCRIPTION

A STRIP OF LAND SITUATED IN PART OF THE NORTHWEST QUARTER (NW/4) AND SOUTHWEST QUARTER (SW/4) OF SECTION THIRTY-TWO (32), TOWNSHIP NINETEEN (19) NORTH, RANGE FIFTEEN (15) EAST OF THE INDIAN BASE AND MERIDIAN, WAGONER COUNTY, STATE OF OKLAHOMA, ACCORDING TO THE U.S. GOVERNMENT SURVEY THEREOF, SAID STRIP OF LAND BEING MORE PARTICULARLY DESCRIBED AS FOLLOWS:

COMMENCING AT THE NORTHWEST CORNER OF SAID SOUTHWEST QUARTER (SW/4) OF SECTION THIRTY-TWO (32); THENCE SOUTH 01°30'00" EAST ALONG THE WEST LINE OF SAID SOUTHWEST QUARTER (SW/4), A DISTANCE OF 330.52 FEET; THENCE NORTH 88°48'13" EAST, A DISTANCE OF 100.01 FEET TO THE POINT OF BEGINNING; THENCE CONTINUING NORTH 88°48'13" EAST, A DISTANCE OF 144.19 FEET; THENCE NORTH 40°19'01" EAST, A DISTANCE OF 239.91 FEET; THENCE NORTH 01°11'47" WEST, A DISTANCE OF 104.00 FEET; THENCE NORTH 88°48'13" EAST, A DISTANCE OF 240.04 FEET; THENCE NORTH 01°11'47" WEST, A DISTANCE OF 663.00 FEET; THENCE NORTH 88°48'13" EAST, A DISTANCE OF 187.10 FEET; THENCE NORTH 16°39'06" EAST, A DISTANCE OF 138.62 FEET; THENCE NORTH 01°11'47" WEST, A DISTANCE OF 158.05 FEET; THENCE SOUTH 88°48'13" WEST, A DISTANCE OF 58.00 FEET; THENCE NORTH 01°11'47" WEST, A DISTANCE OF 12.50 FEET; THENCE NORTH 88°48'13" EAST, A DISTANCE OF 69.00; THENCE SOUTH 01°11'47" EAST, A DISTANCE OF 172.28 FEET; THENCE SOUTH 16°39'06" WEST, A DISTANCE OF 32.12 FEET; THENCE SOUTH 73°20'54" EAST, A DISTANCE OF 32.11 FEET; THENCE SOUTH 16°39'06" WEST, A DISTANCE OF 25.00 FEET; THENCE NORTH 73°20'54" WEST A DISTANCE OF 32.11 FEET; THENCE SOUTH 16°39'06" WEST, A DISTANCE OF 91.24 FEET; THENCE SOUTH 88°48'13" WEST, A DISTANCE OF 138.11 FEET; THENCE SOUTH 01°11'47" EAST, A DISTANCE OF 18.00 FEET; THENCE SOUTH 88°48'13" WEST, A DISTANCE OF 17.00 FEET; THENCE NORTH 01°11'47" WEST, A DISTANCE OF 18.00 FEET; THENCE SOUTH 88°48'13" WEST, A DISTANCE OF 29.00 FEET; THENCE SOUTH 01°11'47" EAST, A DISTANCE OF 89.00 FEET; THENCE NORTH 88°48'13" EAST, A DISTANCE OF 15.00 FEET; THENCE SOUTH 01°11'47" EAST, A DISTANCE OF 13.00 FEET; THENCE SOUTH 88°48'13" WEST, A DISTANCE OF 15.00 FEET; THENCE SOUTH 01°11'47" EAST, A DISTANCE OF 251.67 FEET; THENCE NORTH 88°48'13" EAST, A DISTANCE OF 15.00 FEET; THENCE SOUTH 01°11'47" EAST, A DISTANCE OF 13.00 FEET; THENCE SOUTH 88°48'13" WEST, A DISTANCE OF 15.00 FEET; THENCE SOUTH 01°11'47" EAST, A DISTANCE OF 296.33 FEET; THENCE SOUTH 88°48'13" WEST, A DISTANCE OF 240.04 FEET; THENCE SOUTH 01°11'47" EAST, A DISTANCE OF 97.17 FEET; THENCE SOUTH 40°19'01" WEST, A DISTANCE OF 160.12 FEET; THENCE SOUTH 19°35'22" EAST, A DISTANCE OF 44.86 FEET; THENCE SOUTH 70°25'05" WEST, A DISTANCE OF 20.00 FEET; THENCE NORTH 19°35'22" WEST, A DISTANCE OF 33.26 FEET; THENCE SOUTH 40°19'01" WEST, A DISTANCE OF 65.80 FEET; THENCE SOUTH 88°48'13" WEST, A DISTANCE OF 149.09 FEET; THENCE NORTH 01°30'00" WEST, A DISTANCE OF 11.00 FEET TO THE POINT OF BEGINNING. CONTAINING 23,853 SQUARE FEET OR 0.55 ACRES, MORE OR LESS.

LEGAL DESCRIPTION BASIS OF BEARINGS IS THE OKLAHOMA STATE PLANE COORDINATE SYSTEM (ZONE 3501 NORTH) WITH THE WEST LINE OF THE SOUTHWEST QUARTER (SW/4) BEING SOUTH 01°30'00" EAST.

THIS LEGAL DESCRIPTION WAS PREPARED ON SEPTEMBER 19, 2024, BY JAY P. BISSELL, OKLAHOMA LICENSED LAND SURVEYOR NO. 1318.

SURVEYOR'S STATEMENT

I, JAY P. BISSELL, OF AAB ENGINEERING, LLC, CERTIFY THAT THE ATTACHED LEGAL DESCRIPTION CLOSES IN ACCORD WITH THE EXISTING RECORDS IS A TRUE REPRESENTATION OF THE EASEMENT AS DESCRIBED AND MEETS THE MINIMUM TECHNICAL STANDARDS FOR LAND SURVEYING OF THE STATE OF OKLAHOMA.

Jay P. Bissell 9-25-2024

JAY P. BISSELL
OKLAHOMA PLS NO. 1318

