

# CACY MINI-STORAGE

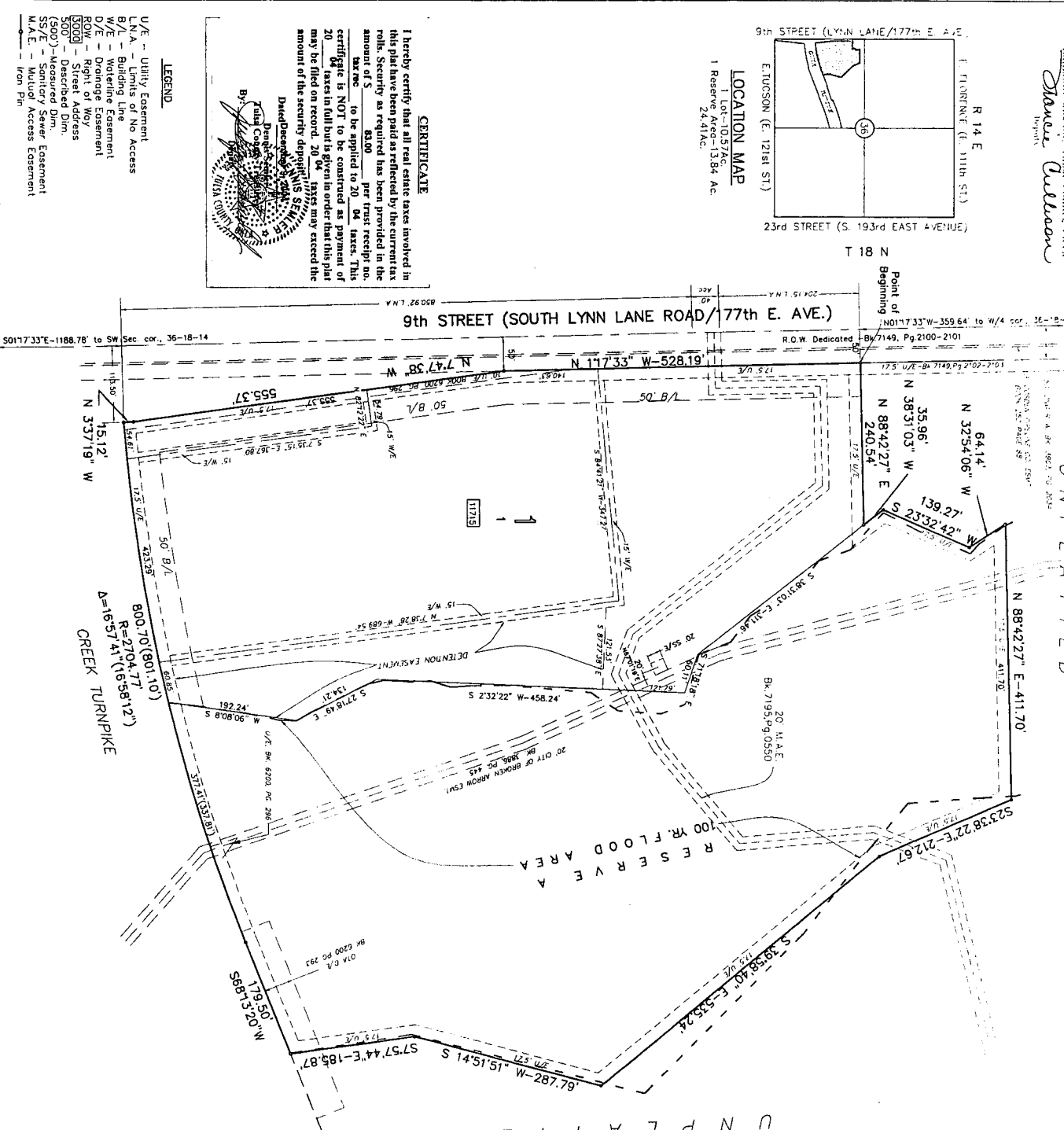
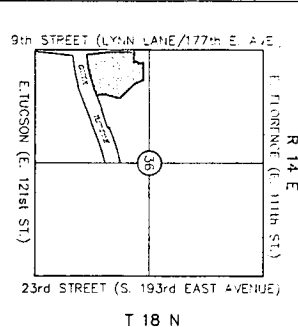
AN ADDITION TO THE CITY OF BROKEN ARROW, TULSA COUNTY, OKLAHOMA IN THE SW/4 OF SECTION 36, T-18-N, R-14-E  
 P.U.D. NO. 133A

PLAT NO.  
**5834**

STATE OF OKLAHOMA  
 COUNTY OF TULSA  
 I, Debra A. Wilson, Clerk of the County, do hereby certify that the foregoing plat was duly recorded in my office on the 12th day of December, 2004, at 10:00 AM.

**OWNER**  
 ROBERT L. & BELINDA L. CACY  
 2942 E. 101st Place  
 TULSA, OKLAHOMA 74137  
 PHONE: 918/888-0111

**ENGINEER/SURVEYOR**  
 LEWIS ENGINEERING, P.L.L.C.  
 5879 S. GARRETT  
 TULSA, OKLAHOMA 74146  
 PHONE: 918/234-4688  
 CA 3460 EXP. 6-30-05



**RESTRICTIONS**

1. The owner of each lot shall be responsible for the protection of the public water and sewer mains located on or in his lot.

2. Within the depicted utility easement areas, the alteration of grade in excess of three (3) feet from the contours shown on this plat shall be prohibited.

3. The City of Broken Arrow shall be responsible for the ordinary maintenance of public water and sewer mains, including the installation, repair, and replacement of such mains.

4. The City of Broken Arrow shall be responsible for the ordinary maintenance of public water and sewer mains, including the installation, repair, and replacement of such mains.

5. The owner of a lot shall be responsible for the repair of damage to land, structures, or other improvements on the lot caused by the installation, repair, or replacement of such mains.

6. The City of Broken Arrow shall be responsible for the ordinary maintenance of public water and sewer mains, including the installation, repair, and replacement of such mains.

7. The City of Broken Arrow shall be responsible for the ordinary maintenance of public water and sewer mains, including the installation, repair, and replacement of such mains.

8. The City of Broken Arrow shall be responsible for the ordinary maintenance of public water and sewer mains, including the installation, repair, and replacement of such mains.

9. The City of Broken Arrow shall be responsible for the ordinary maintenance of public water and sewer mains, including the installation, repair, and replacement of such mains.

10. The City of Broken Arrow shall be responsible for the ordinary maintenance of public water and sewer mains, including the installation, repair, and replacement of such mains.

**SECTION II**

**RESTRICTIONS**

1. The owner of each lot shall be responsible for the protection of the public water and sewer mains located on or in his lot.

2. Within the depicted utility easement areas, the alteration of grade in excess of three (3) feet from the contours shown on this plat shall be prohibited.

3. The City of Broken Arrow shall be responsible for the ordinary maintenance of public water and sewer mains, including the installation, repair, and replacement of such mains.

4. The City of Broken Arrow shall be responsible for the ordinary maintenance of public water and sewer mains, including the installation, repair, and replacement of such mains.

5. The owner of a lot shall be responsible for the repair of damage to land, structures, or other improvements on the lot caused by the installation, repair, or replacement of such mains.

6. The City of Broken Arrow shall be responsible for the ordinary maintenance of public water and sewer mains, including the installation, repair, and replacement of such mains.

7. The City of Broken Arrow shall be responsible for the ordinary maintenance of public water and sewer mains, including the installation, repair, and replacement of such mains.

8. The City of Broken Arrow shall be responsible for the ordinary maintenance of public water and sewer mains, including the installation, repair, and replacement of such mains.

9. The City of Broken Arrow shall be responsible for the ordinary maintenance of public water and sewer mains, including the installation, repair, and replacement of such mains.

10. The City of Broken Arrow shall be responsible for the ordinary maintenance of public water and sewer mains, including the installation, repair, and replacement of such mains.

**CERTIFICATE**

I hereby certify that all real estate taxes involved in this plat have been paid as reflected by the current tax rolls. Security as required has been provided in the amount of \$ 83.00 per tract receipt no. \_\_\_\_\_ to be applied to 2004 taxes. This certificate is NOT to be construed as payment of 2004 taxes in full but is given in order that this plat may be filed on record. 2004 taxes may exceed the amount of the security deposit.

**LEGEND**

U/E - Utility Easement  
 N/A - Limits of No Access  
 W/E - Wetland Easement  
 O/E - Drainage Easement  
 ROW - Right of Way  
 5000' - Street Address  
 5000' - Measured Dim.  
 S(5000') - Measured Dim.  
 M.A.E. - Mutual Access Easement  
 --- Iron Pin

**BACKFLOW PREVENTOR TABLE**

PROF.	UP	RIM
BK/L1	ELEV.	FT.
1	84	83.1

**APPROVED** 11-3-03  
 Richard C. Carter  
 Mayor, City of Broken Arrow, Oklahoma

**APPROVED** 11-19-04  
 William E. Lewis  
 Notary Public

Case No. P103-120  
 Date No. 03-16-05  
 CACY MINI-STORAGE  
 Sheet 1 of 1