

PRELIMINARY PLAT

# The Villages at Seven Oaks South

PUD 280A

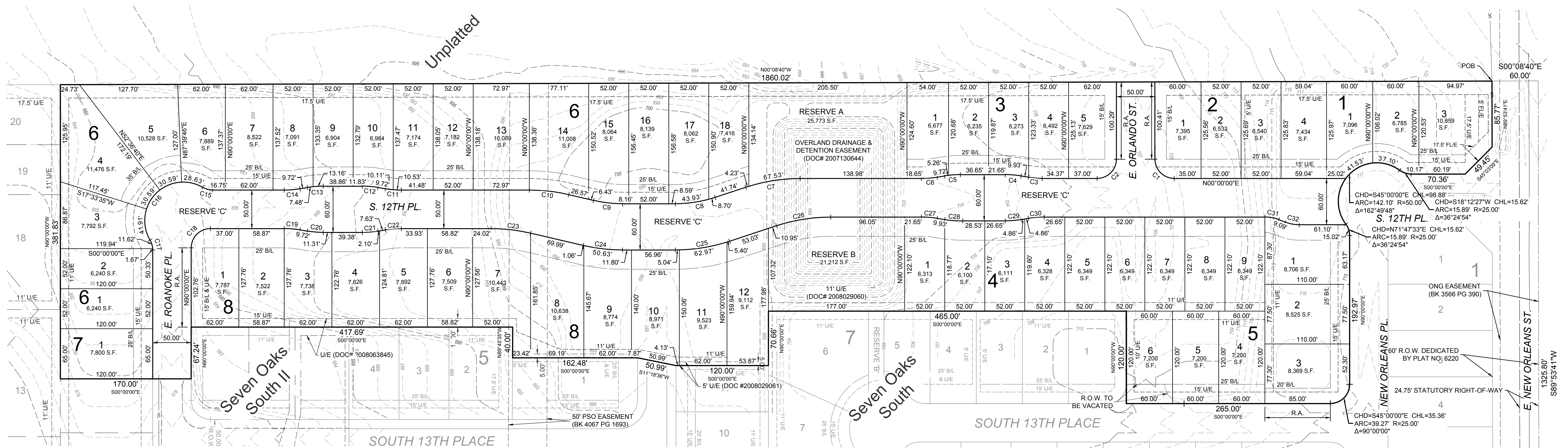
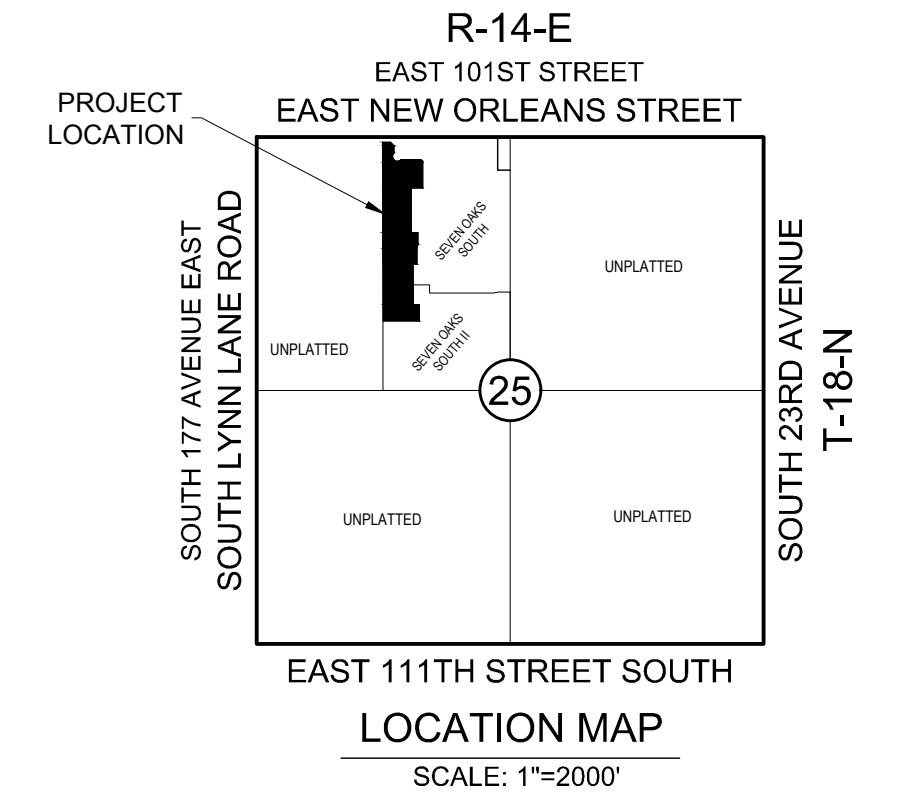
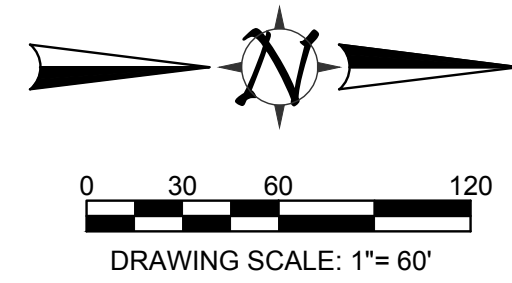
A SUBDIVISION IN THE CITY OF BROKEN ARROW, TULSA COUNTY, OKLAHOMA BEING A PART OF THE E/2 NW/4 OF SECTION TWENTY-FIVE (25), TOWNSHIP 18 NORTH, RANGE 14 EAST, OF THE INDIAN BASE AND MERIDIAN.

### OWNER/DEVELOPER

SEVEN OAKS SOUTH, LLC  
1420 WEST KENOSHIA  
BROKEN ARROW, OK 74012  
PHONE: 918-261-5200  
ATTN: CHUCK RAMSAY

### ENGINEER/SURVEYOR

AAB ENGINEERING LLC  
CERTIFICATE OF AUTHORIZATION NO. 6318, EXP. JUNE, 30, 2020  
PO BOX 2136  
SAND SPRINGS, OK 74063  
PHONE: 918.514.4283  
FAX: 918.514.4288  
EMAIL: ALAN@AABENG.COM



### LEGEND

B/L.....	BUILDING LINE
LNA.....	LIMITS OF NO ACCESS
POB.....	POINT OF BEGINNING
POC.....	POINT OF COMMENCEMENT
U/E.....	UTILITY EASEMENT
OD/E.....	OVERLAND DRAINAGE EASEMENT
R.O.W.....	RIGHT-OF-WAY
DOD.....	DEED OF DEDICATION
R.A.....	RESTRICTED ACCESS
XXXX	ADDRESSES

### FLOODPLAIN

PROPERTY IS NOT LOCATED WITHIN A FEDERALLY DEFINED FLOOD HAZARD AREA PER FIRM PANEL 40143C0394, EFFECTIVE: SEPTEMBER 30, 2016

### SITE DATA

**BENCHMARK**  
3" ALUMINUM CAP-FLUSH-SET IN CONCRETE-STAMPED  
"TUL 4", SET WEST OF 23RD STREET, AND APPROXIMATELY 0.10  
MILES NORTH EAST OF FLORENCE STREET.  
ELEV = 633.40' (NAVD 1929)

**BASIS OF BEARINGS**  
THE BASIS OF BEARING FOR SAID TRACT IS S 89°53'41" W ALONG  
THE NORTH LINE OF THE NORTHWEST QUARTER (NW/4) OF  
SECTION 25, TOWNSHIP 18 NORTH, RANGE 14 EAST OF THE  
INDIAN BASE AND MERIDIAN, CITY OF BROKEN ARROW, TULSA  
COUNTY, STATE OF OKLAHOMA.

**MONUMENTATION**  
A 3/8" X 18" REBAR WITH A YELLOW PLASTIC CAP STAMPED  
"CA6318" TO BE SET AT ALL LOT CORNERS, POINTS OF CURVE,  
POINTS OF TANGENT, POINTS OF COMPOUND CURVE, POINTS OF  
REVERSE CURVE, UNLESS NOTED OTHERWISE.

**ADDRESSES**  
ADDRESSES SHOWN ON THIS PLAT WERE ACCURATE AT THE  
TIME THIS PLAT WAS FILED. ADDRESSES ARE SUBJECT TO  
CHANGE AND SHOULD NEVER BE RELIED ON IN PLACE OF LEGAL  
DESCRIPTION.

### CONTACTS

<b>MUNICIPAL AUTHORITY</b> CITY OF BROKEN ARROW 210 SOUTH 1ST STREET BROKEN ARROW, OK 74012	<b>AEP / PSO</b> 212 EAST 6TH STREET TULSA, OK 74119 PHONE: 918.599.2351
<b>OKLAHOMA NATURAL GAS COMPANY</b> 5848 EAST 15TH STREET TULSA, OK 74112 PHONE: 918.831.8293	<b>COX COMMUNICATIONS</b> 11811 EAST 51ST STREET TULSA, OK 74145 PHONE: 918.286.4658
<b>WINDSTREAM TELECOM COMPANY</b> 2300 EAST 1ST PLACE BROKEN ARROW, OK 74012 PHONE: 918.451.3427	

### SUBDIVISION STATISTICS

SUBDIVISION CONTAINS FIFTY EIGHT (58) LOTS IN EIGHT (8) BLOCKS AND THREE (3) RESERVE AREAS
BLOCK 1.....0.57 ACRES - 3 LOTS
BLOCK 2.....0.64 ACRES - 4 LOTS
BLOCK 3.....0.76 ACRES - 5 LOTS
BLOCK 4.....1.30 ACRES - 9 LOTS
BLOCK 5.....1.08 ACRES - 6 LOTS
BLOCK 6.....3.37 ACRES - 18 LOTS
BLOCK 7.....0.18 ACRES - 1 LOT
BLOCK 8.....2.38 ACRES - 12 LOTS
RESERVE A.....0.59 ACRES
RESERVE B.....0.49 ACRES
STREET R.O.W. (RESERVE C).....2.32 ACRES
SUBDIVISION CONTAINS.....13.68 ACRES

### CURVE TABLE

CURVE #	LENGTH	RADIUS	CHORD LENGTH	CHORD BEARING	CURVE #	LENGTH	RADIUS	CHORD LENGTH	CHORD BEARING
C1	39.27'	25.00'	35.36'	N45°00'00"E	C17	13.29'	25.00'	13.14'	S74°46'01"W
C2	39.27'	25.00'	35.36'	N45°00'00"W	C18	39.27'	25.00'	35.36'	S45°00'00"E
C3	17.72'	125.00'	71.71'	N05°24'01"E	C19	20.64'	125.00'	20.62'	S04°43'52"W
C4	20.64'	125.00'	20.62'	N04°43'52"E	C20	20.64'	125.00'	20.62'	S04°43'52"W
C5	20.64'	125.00'	20.62'	N04°43'52"W	C21	20.64'	125.00'	20.62'	S04°43'52"E
C6	20.64'	125.00'	20.62'	N04°43'52"W	C22	20.64'	125.00'	20.62'	S04°43'52"E
C7	71.77'	225.00'	71.46'	N09°08'16"W	C23	51.69'	225.00'	51.58'	S06°34'53"W
C8	52.63'	165.00'	52.41'	N09°08'16"W	C24	51.69'	225.00'	51.58'	S06°34'53"W
C9	37.91'	165.00'	37.82'	N06°34'53"E	C25	71.77'	225.00'	71.46'	S09°18'16"E
C10	51.69'	225.00'	51.58'	N06°34'53"E	C26	71.77'	225.00'	71.46'	S09°18'16"E
C11	20.64'	125.00'	20.62'	N04°43'52"E	C27	20.64'	125.00'	20.62'	S04°43'52"W
C12	20.64'	125.00'	20.62'	N04°43'52"E	C28	23.56'	125.00'	23.53'	S04°03'43"W
C13	20.64'	125.00'	20.62'	N04°43'52"W	C29	20.64'	125.00'	20.62'	S04°43'52"E
C14	20.64'	125.00'	20.62'	N04°43'52"W	C30	20.64'	125.00'	20.62'	S04°43'52"E
C15	13.29'	25.00'	13.14'	N15°13'59"E	C31	18.44'	50.00'	18.34'	S10°33'54"W
C16	131.71'	50.00'	96.80'	N45°00'00"W	C32	18.44'	50.00'	18.34'	S10°33'54"W

NORTHEAST CORNER OF THE E/2  
NW/4 OF SECTION 25 T-18-N R-14-E

APPROVED BY THE CITY COUNCIL OF THE  
CITY OF BROKEN ARROW, OKLAHOMA.

MAYOR \_\_\_\_\_

ATTEST: CITY CLERK \_\_\_\_\_





# The Villages at Seven Oaks South

PUD 280A

A SUBDIVISION IN THE CITY OF BROKEN ARROW, TULSA COUNTY, OKLAHOMA BEING A PART OF THE E/2 NW/4 OF SECTION TWENTY-FIVE (25), TOWNSHIP 18 NORTH, RANGE 14 EAST, OF THE INDIAN BASE AND MERIDIAN.

**OWNER/DEVELOPER**

SEVEN OAKS SOUTH, LLC

1420 WEST KENOSHA  
BROKEN ARROW, OK 74012  
PHONE: 918-261-5200  
ATTN: CHUCK RAMSAY

**ENGINEER/SURVEYOR**

AAB ENGINEERING LLC

CERTIFICATE OF AUTHORIZATION NO. 6318, EXP. JUNE, 30, 2020  
PO BOX 2136  
SAND SPRINGS, OK 74063  
PHONE: 918.514.4283  
FAX: 918.514.4288  
EMAIL: ALAN @ AABENG.COM

**DEED OF DEDICATION AND RESTRICTIVE COVENANTS**

NOW ALL MEN BY THESE PRESENTS:

SEVEN OAKS SOUTH, LLC, AN OKLAHOMA LIMITED LIABILITY COMPANY, HEREINAFTER TOGETHER REFERRED TO AS THE "OWNER/DEVELOPER" IS THE OWNER OF THE FOLLOWING DESCRIBED LAND IN THE CITY OF BROKEN ARROW, BROKEN ARROW COUNTY, STATE OF OKLAHOMA, TO-WIT:

A TRACT OF LAND SITUATED IN THE EAST HALF OF THE NORTHWEST QUARTER (E/2 NW/4) OF SECTION 25, TOWNSHIP 18 NORTH, RANGE 14 EAST OF THE INDIAN BASE AND MERIDIAN, CITY OF BROKEN ARROW, TULSA COUNTY, STATE OF OKLAHOMA, ACCORDING TO THE U.S. GOVERNMENT THEREOF, MORE PARTICULARLY DESCRIBED AS FOLLOWS:

COMMENCING AT THE NORTHEAST CORNER OF SAID EAST HALF OF THE NORTHWEST QUARTER (E/2 NW/4) OF SECTION 25, THENCE SOUTH 89°53'41" WEST ALONG THE NORTH LINE OF SAID SECTION 25, A DISTANCE OF 1325.80 FEET; THENCE SOUTH 00°08'40" EAST, A DISTANCE OF 60.00 FEET TO THE POINT OF BEGINNING. SAID POINT OF BEGINNING ALSO BEING ON THE BOUNDARY OF SEVEN OAKS SOUTH, A SUBDIVISION IN THE CITY OF BROKEN ARROW AND THENCE ALONG SAID BOUNDARY OF SEVEN OAKS SOUTH FOR THE FOLLOWING SEVENTEEN CALLS; THENCE NORTH 89°53'41" EAST, A DISTANCE OF 85.77 FEET; THENCE SOUTH 45°03'09" EAST, A DISTANCE OF 49.45 FEET; THENCE SOUTH 00°00'00" EAST, A DISTANCE OF 70.36 FEET; THENCE ON A CURVE TO THE RIGHT WITH A RADIUS OF 25.00 FEET AND A DELTA OF 36°24'54", HAVING A CHORD BEARING OF SOUTH 18°12'27" WEST AND A CHORD DISTANCE OF 15.62 FEET, AN ARC DISTANCE OF 15.89 FEET; THENCE ON A CURVE TO THE LEFT WITH A RADIUS OF 50.00 FEET AND A DELTA OF 162°49'48", HAVING A CHORD BEARING OF SOUTH 45°00'00" EAST AND A CHORD DISTANCE OF 98.88 FEET, AN ARC DISTANCE OF 142.10 FEET; THENCE ON A CURVE TO THE RIGHT WITH A RADIUS OF 25.00 FEET AND A DELTA OF 36°24'54", HAVING A CHORD BEARING OF NORTH 71°47'33" EAST AND A CHORD DISTANCE OF 15.62 FEET, AN ARC DISTANCE OF 15.89 FEET; THENCE NORTH 90°00'00" EAST, A DISTANCE OF 192.97 FEET; THENCE ON A CURVE TO THE RIGHT WITH A RADIUS OF 25.00 FEET AND A DELTA OF 90°00'00", HAVING A CHORD BEARING OF SOUTH 45°00'00" EAST AND A CHORD DISTANCE OF 35.36 FEET, AN ARC DISTANCE OF 39.27 FEET; THENCE SOUTH 00°00'00" EAST, A DISTANCE OF 285.00 FEET; THENCE NORTH 90°00'00" WEST, A DISTANCE OF 120.00 FEET; THENCE SOUTH 00°00'00" EAST, A DISTANCE OF 465.00 FEET; THENCE NORTH 90°00'00" EAST, A DISTANCE OF 70.66 FEET; THENCE SOUTH 00°00'00" EAST, A DISTANCE OF 120.00 FEET; THENCE SOUTH 11°18'36" WEST, A DISTANCE OF 50.89 FEET; THENCE SOUTH 00°00'00" EAST, A DISTANCE OF 162.48 FEET; THENCE NORTH 89°45'35" WEST A DISTANCE OF 40.00 FEET; THENCE SOUTH 00°00'00" EAST A DISTANCE OF 417.89 FEET ALONG THE BOUNDARY OF SAID SEVEN OAKS SOUTH AND ALONG THE BOUNDARY OF SEVEN OAKS SOUTH II, A SUBDIVISION IN THE CITY OF BROKEN ARROW AND THENCE ALONG SAID BOUNDARY OF SEVEN OAKS SOUTH II FOR THE FOLLOWING THREE CALLS; THENCE NORTH 90°00'00" EAST A DISTANCE OF 67.24 FEET; THENCE SOUTH 00°00'00" EAST, A DISTANCE OF 170.00 FEET; THENCE NORTH 90°00'00" WEST, A DISTANCE OF 381.83 TO THE NORTHWEST CORNER OF SAID SEVEN OAKS SOUTH II; THENCE SOUT 00°08'40" WEST, A DISTANCE OF 1860.02 FEET TO THE POINT OF BEGINNING.

SAID TRACT CONTAINS 595,971.88 SQUARE FEET OR 13.68 ACRES

AND HAS CAUSED THE ABOVE DESCRIBED TRACT OF LAND TO BE SURVEYED, STAKED, PLATTED AND SUBDIVIDED INTO 58 LOTS IN 8 BLOCKS, IN CONFORMITY WITH THE ACCOMPANYING PLAT, AND HAS DESIGNATED THE SUBDIVISION AS "THE VILLAGES AT SEVEN OAKS SOUTH", A SUBDIVISION IN THE CITY OF BROKEN ARROW, BROKEN ARROW COUNTY, OKLAHOMA (HEREINAFTER REFERRED TO AS "THE VILLAGES AT SEVEN OAKS SOUTH" OR THE "SUBDIVISION").

**SECTION I. PUBLIC STREETS, EASEMENTS AND UTILITIES**

- A. **PUBLIC STREETS AND GENERAL UTILITY EASEMENTS**  
THE OWNER/DEVELOPER DOES HEREBY DEDICATE FOR PUBLIC USE THE STREETS DEPICTED ON THE ACCOMPANYING PLAT AND DOES FURTHER DEDICATE FOR PUBLIC USE THE UTILITY EASEMENTS AS DEPICTED ON THE ACCOMPANYING PLAT AS "U/E" OR "UTILITY EASEMENT", FOR OWNER/DEVELOPER AND ALL UTILITY SERVICES WITH FRANCHISE RIGHTS WITHIN THE CITY OF BROKEN ARROW FOR THE SEVERAL PURPOSES OF CONSTRUCTING, MAINTAINING, OPERATING, REPAIRING, REPLACING, AND/OR REMOVING ANY AND ALL PUBLIC UTILITIES, INCLUDING STORM SEWERS, SANITARY SEWERS, TELEPHONE AND COMMUNICATION LINES, ELECTRIC POWER LINES AND TRANSFORMERS, GAS LINES, WATER LINES AND CABLE TELEVISION LINES, TOGETHER WITH ALL FITTINGS, INCLUDING THE POLES, WIRES, CONDUITS, PIPES, VALVES, METERS AND EQUIPMENT FOR EACH OF SUCH FACILITIES AND ANY OTHER APPURTENANCES THERETO, WITH THE RIGHTS OF INGRESS AND EGRESS TO AND UPON THE UTILITY EASEMENTS FOR THE USES AND PURPOSES AFORESAID, PROVIDED HOWEVER, THE OWNER/DEVELOPER HEREBY RESERVES THE RIGHT TO CONSTRUCT, MAINTAIN, OPERATE, LAY AND RE-LAY ALL UTILITY LINES, INCLUDING WATER LINES AND SEWER LINES, TOGETHER WITH THE RIGHT OF INGRESS AND EGRESS FOR SUCH CONSTRUCTION, MAINTENANCE, OPERATION, LAYING AND RE-LAYING OVER, ACROSS AND ALONG ALL OF THE UTILITY EASEMENTS DEPICTED ON THE PLAT, FOR THE PURPOSE OF FURNISHING WATER SERVICE, SEWER SERVICE AND ALL UTILITY SERVICES TO THE AREA INCLUDED IN THE PLAT AND ELSEWHERE, AS MAY BE REQUIRED. THE OWNER/DEVELOPER HEREIN IMPOSES A RESTRICTIVE COVENANT, WHICH COVENANT SHALL BE BINDING ON EACH LOT OWNER AND SHALL BE ENFORCEABLE BY THE CITY OF BROKEN ARROW, OKLAHOMA, AND BY THE SUPPLIER OF ANY AFFECTED UTILITY SERVICE, THAT WITHIN THE UTILITY EASEMENTS DEPICTED ON THE ACCOMPANYING PLAT NO BUILDING, STRUCTURE OR OTHER ABOVE OR BELOW GROUND OBSTRUCTION SHALL BE PLACED, ERECTED, INSTALLED OR MAINTAINED, PROVIDED HOWEVER, NOTHING HEREIN SHALL BE DEEMED TO PROHIBIT DRIVES, PARKING AREAS, CURBING, LANDSCAPING, CUSTOMARY SCREENING FENCES AND WALLS THAT DO NOT CONSTITUTE AN OBSTRUCTION.
- B. **UNDERGROUND SERVICE**
- OVERHEAD LINES FOR THE SUPPLY OF ELECTRIC, TELEPHONE AND CABLE TELEVISION SERVICES MAY BE LOCATED ALONG THE PERIMETER EASEMENTS OF THE SUBDIVISION. STREET LIGHT POLES OR STANDARDS MAY BE SERVED BY OVERHEAD LINE OR UNDERGROUND CABLE AND ELSEWHERE THROUGHOUT THE SUBDIVISION. ALL SUPPLY LINES SHALL BE LOCATED UNDERGROUND IN THE GENERAL UTILITY EASEMENTS. SERVICE PEDESTALS AND TRANSFORMERS, AS SOURCES OF SUPPLY AT SECONDARY VOLTAGES, MAY ALSO BE LOCATED IN THE GENERAL UTILITY EASEMENTS.
  - UNDERGROUND SERVICE CABLES TO ALL STRUCTURES WHICH MAY BE LOCATED WITHIN THE SUBDIVISION MAY BE RUN FROM THE NEAREST SERVICE PEDESTAL OR TRANSFORMER TO THE POINT OF USAGE DETERMINED BY THE LOCATION AND CONSTRUCTION OF SUCH STRUCTURE AS MAY BE LOCATED UPON THE LOT, PROVIDED THAT UPON THE INSTALLATION OF A SERVICE CABLE TO A PARTICULAR STRUCTURE, THE SUPPLIER OF SERVICE SHALL THEREAFTER BE DEEMED TO HAVE A DEFINITIVE, PERMANENT AND EFFECTIVE EASEMENT ON THE LOT, COVERING A 5 FOOT STRIP EXTENDING 2.5 FEET ON EACH SIDE OF THE SERVICE CABLE, EXTENDING FROM THE SERVICE PEDESTAL OR TRANSFORMER TO THE SERVICE ENTRANCE ON THE STRUCTURE.
  - THE SUPPLIER OF ELECTRIC, TELEPHONE AND CABLE TELEVISION SERVICES, THROUGH ITS AGENTS AND EMPLOYEES, SHALL AT ALL TIMES HAVE RIGHT TO ALL GENERAL UTILITY EASEMENTS DEPICTED ON THE ACCOMPANYING PLAT OR OTHERWISE PROVIDED FOR IN THIS DEED OF DEDICATION

- FOR THE PURPOSE OF INSTALLING, MAINTAINING, REMOVING OR REPLACING ANY PORTION OF THE UNDERGROUND ELECTRIC, TELEPHONE OR CABLE TELEVISION FACILITIES INSTALLED BY THE SUPPLIER OF THE UTILITY SERVICE.
- THE OWNER OF THE LOT SHALL BE RESPONSIBLE FOR THE PROTECTION OF THE UNDERGROUND SERVICE FACILITIES LOCATED ON HIS LOT AND SHALL PREVENT THE ALTERATION OF GRADE OR ANY CONSTRUCTION ACTIVITY THAT WOULD INTERFERE WITH THE ELECTRIC, TELEPHONE OR CABLE TELEVISION FACILITIES. THE SUPPLIER OF SERVICE SHALL BE RESPONSIBLE FOR ORDINARY MAINTENANCE OF UNDERGROUND FACILITIES, BUT THE OWNER SHALL PAY FOR DAMAGE OR RELOCATION OF SUCH FACILITIES CAUSED OR NECESSITATED BY ACTS OF THE OWNER OR HIS AGENTS OR CONTRACTORS.
  - THE FOREGOING COVENANTS SET FORTH IN THIS PARAGRAPH B SHALL BE ENFORCEABLE BY THE SUPPLIER OF THE ELECTRIC, TELEPHONE OR CABLE TELEVISION SERVICE AND THE OWNER OF THE LOT AGREES TO BE BOUND HEREBY.
- C. **WATER, SANITARY SEWER AND STORM SEWER SERVICE**
- THE OWNER OF THE LOT SHALL BE RESPONSIBLE FOR THE PROTECTION OF THE PUBLIC WATER MAINS, SANITARY SEWER MAINS AND STORM SEWERS LOCATED ON THEIR LOT AND SHALL PREVENT THE ALTERATION OF GRADE OR ANY CONSTRUCTION ACTIVITY WHICH MAY INTERFERE WITH SAID PUBLIC WATER MAIN, PUBLIC SANITARY SEWER MAIN OR STORM SEWER.
  - WITHIN THE UTILITY EASEMENT AREAS DEPICTED ON THE ACCOMPANYING PLAT, THE ALTERATION OF GRADE FROM THE CONTOURS EXISTING UPON THE COMPLETION OF THE INSTALLATION OF A PUBLIC WATER MAIN, SANITARY SEWER MAIN OR STORM SEWER, OR ANY CONSTRUCTION ACTIVITY WHICH WOULD INTERFERE WITH PUBLIC WATER MAINS, SANITARY SEWER MAINS AND STORM SEWERS SHALL BE PROHIBITED. THE CITY OF BROKEN ARROW MAY SPECIFICALLY ENFORCE THIS PROVISION.
  - THE CITY OF BROKEN ARROW, OKLAHOMA, OR ITS SUCCESSORS, SHALL BE RESPONSIBLE FOR ORDINARY MAINTENANCE OF PUBLIC WATER AND SEWER MAINS, BUT THE OWNER SHALL PAY FOR DAMAGE OR RELOCATION OF SUCH FACILITIES CAUSED OR NECESSITATED BY ACTS OF THE OWNER, HIS AGENTS OR CONTRACTORS.
  - THE CITY OF BROKEN ARROW, OKLAHOMA, OR ITS SUCCESSORS, SHALL AT ALL TIMES HAVE RIGHT OF ACCESS TO ALL EASEMENTS DEPICTED ON THE ACCOMPANYING PLAT, OR OTHERWISE PROVIDED FOR IN THIS DEED OF DEDICATION, FOR THE PURPOSE OF INSTALLING, MAINTAINING, REMOVING OR REPLACING ANY PORTION OF UNDERGROUND WATER OR SEWER FACILITIES.
  - THE FOREGOING COVENANTS SET FORTH IN THIS PARAGRAPH C SHALL BE ENFORCEABLE BY THE CITY OF BROKEN ARROW, OKLAHOMA, OR ITS SUCCESSORS, AND THE OWNER OF THE LOT AGREES TO BE BOUND HEREBY.
- D. **PAVING AND LANDSCAPING WITHIN EASEMENTS**  
THE OWNER OF THE LOT AFFECTED SHALL BE RESPONSIBLE FOR THE REPAIR OF DAMAGE TO LANDSCAPING AND PAVING OCCASIONED BY NECESSARY INSTALLATION OR MAINTENANCE OF UNDERGROUND WATER, SEWER, STORM SEWER, NATURAL GAS, COMMUNICATION, CABLE TELEVISION OR ELECTRIC FACILITIES WITHIN THE EASEMENT AREAS DEPICTED UPON THE ACCOMPANYING PLAT, PROVIDED, HOWEVER, THE CITY OF BROKEN ARROW, OKLAHOMA, OR THE SUPPLIER OF THE UTILITY SERVICE SHALL USE REASONABLE CARE IN THE PERFORMANCE OF SUCH ACTIVITIES.
- E. **GAS SERVICE**
- THE OWNER OF THE LOT SHALL BE RESPONSIBLE FOR THE PROTECTION OF THE UNDERGROUND GAS FACILITIES LOCATED ON THE LOT.
  - WITHIN THE DEPICTED UTILITY EASEMENT AREAS, THE ALTERATION OF GRADE OR ANY CONSTRUCTION ACTIVITY, WHICH MAY INTERFERE WITH THE UNDERGROUND GAS FACILITIES, SHALL BE PROHIBITED.
  - THE SUPPLIER OF GAS SERVICE OR ITS SUCCESSORS SHALL BE RESPONSIBLE FOR ORDINARY MAINTENANCE OF THE GAS FACILITIES, BUT THE OWNER SHALL PAY FOR DAMAGE OR RELOCATION OF SUCH FACILITIES CAUSED OR NECESSITATED BY ACTS OF THE OWNER, HIS AGENTS OR CONTRACTORS.
  - THE SUPPLIER OF GAS SERVICE OR ITS SUCCESSORS SHALL AT ALL TIMES HAVE RIGHT OF ACCESS WITH THEIR EQUIPMENT TO ALL EASEMENT AREAS DEPICTED ON THE PLAT OR OTHERWISE PROVIDED FOR IN THIS DEED OF DEDICATION FOR THE PURPOSE OF INSTALLING, MAINTAINING, REMOVING OR REPLACING ANY PORTION OF UNDERGROUND GAS FACILITIES.
  - UNDERGROUND GAS SERVICE LINES TO ALL STRUCTURES WHICH MAY BE LOCATED WITHIN THE SUBDIVISION MAY BE RUN FROM THE NEAREST GAS MAIN TO THE POINT OF USAGE DETERMINED BY THE LOCATION AND CONSTRUCTION OF SUCH STRUCTURE AS MAY BE LOCATED UPON THE LOT, PROVIDED THAT UPON THE INSTALLATION OF A SERVICE LINE TO A PARTICULAR STRUCTURE, THE SUPPLIER OF SERVICE SHALL THEREAFTER BE DEEMED TO HAVE A DEFINITIVE, PERMANENT AND EFFECTIVE EASEMENT ON THE LOT, COVERING A 5 FOOT STRIP EXTENDING 2.5 FEET ON EACH SIDE OF THE SERVICE LINE, EXTENDING FROM THE GAS MAIN TO THE SERVICE ENTRANCE ON THE STRUCTURE.
  - THE FOREGOING COVENANTS SET FORTH IN THIS SUBSECTION D SHALL BE ENFORCEABLE BY THE SUPPLIER OF GAS SERVICE OR ITS SUCCESSORS AND THE OWNER OF THE LOT AGREES TO BE BOUND HEREBY.
- F. **SURFACE DRAINAGE AND LOT GRADING RESTRICTION**  
EACH LOT SHALL RECEIVE AND DRAIN, IN AN UNOBSTRUCTED MANNER, THE STORM AND SURFACE WATERS FROM LOTS AND DRAINAGE AREAS OF HIGHER ELEVATION AND FROM PUBLIC STREETS AND EASEMENTS. NO LOT OWNER SHALL CONSTRUCT OR PERMIT TO BE CONSTRUCTED ANY FENCING OR OTHER OBSTRUCTIONS WHICH WOULD IMPAIR THE DRAINAGE OF STORM AND SURFACE WATERS OVER AND ACROSS HIS LOT. THE FOREGOING COVENANTS SET FORTH IN THIS PARAGRAPH F SHALL BE ENFORCEABLE BY ANY AFFECTED LOT OWNER AND BY THE CITY OF BROKEN ARROW, OKLAHOMA.
- G. **RESERVE AREAS A & B**
- THE USE OF RESERVE AREAS A & B SHALL BE LIMITED TO USE AS OPEN SPACE, LANDSCAPING, OVERLAND DRAINAGE, DETENTION AND UTILITY EASEMENTS AND IS RESERVED FOR SUBSEQUENT CONVEYANCE TO THE HOMEOWNERS' ASSOCIATION.
  - THE OWNER DOES HEREBY DEDICATE TO THE PUBLIC A PERPETUAL EASEMENT ON, OVER, AND ACROSS THE PROPERTY DESIGNATED AND SHOWN ON THE ACCOMPANYING PLAT AS RESERVE A (STORMWATER DETENTION EASEMENT FOR THE PURPOSES OF PERMITTING THE FLOW, CONVEYANCE, RETENTION, DETENTION AND DISCHARGE OF STORMWATER RUNOFF FROM THE SUBDIVISION.
  - DETENTION, RETENTION AND OTHER DRAINAGE FACILITIES LOCATED WITHIN THE STORMWATER DETENTION EASEMENT SHALL BE CONSTRUCTED IN ACCORDANCE WITH STANDARDS AND SPECIFICATIONS APPROVED BY THE CITY OF BROKEN ARROW, OKLAHOMA.
  - NO FENCE, WALL, BUILDING, OR OTHER OBSTRUCTION MAY BE PLACED OR MAINTAINED IN THE STORMWATER DETENTION EASEMENT NOR SHALL THERE BE ANY ALTERATION OF GRADE IN SAID EASEMENTS UNLESS APPROVED BY THE CITY OF BROKEN ARROW, OKLAHOMA.
  - DETENTION, RETENTION, AND OTHER DRAINAGE FACILITIES SHALL BE MAINTAINED BY THE HOMEOWNERS' ASSOCIATION PROVIDED FOR IN THIS DEED OF DEDICATION, TO THE EXTENT NECESSARY TO ACHIEVE THE INTENDED DRAINAGE, RETENTION, AND DETENTION FUNCTIONS INCLUDING REPAIR OF APPURTENANCES

- AND REMOVAL OF OBSTRUCTIONS AND SILTATION. DETENTION FACILITIES SHALL BE MAINTAINED BY THE HOMEOWNERS ASSOCIATION IN ACCORDANCE WITH THE FOLLOWING MINIMUM STANDARDS:
- GRASS AREAS SHALL BE MOWED (IN SEASON) AT REGULAR INTERVALS OF FOUR WEEKS, OR LESS.
  - CONCRETE APPURTENANCES SHALL BE MAINTAINED IN GOOD CONDITION AND REPLACED IF DAMAGED.
  - THE DETENTION EASEMENT SHALL BE KEPT FREE OF DEBRIS.
  - CLEANING OF SILTATION AND VEGETATION FROM CHANNELS SHALL BE PREFORMED TWICE YEARLY.
- LANDSCAPING, APPROVED BY THE CITY OF BROKEN ARROW, OKLAHOMA, SHALL BE ALLOWED WITHIN THE STORMWATER DETENTION EASEMENT.
  - IN THE EVENT THE HOMEOWNERS ASSOCIATION SHOULD FAIL TO PROPERLY MAINTAIN THE DETENTION, RETENTION, AND OTHER DRAINAGE FACILITIES OR, IN THE EVENT OF THE PLACEMENT OF AN OBSTRUCTION WITHIN, OR THE ALTERATION OF GRADE, THE CITY OF BROKEN ARROW, OKLAHOMA, OR ITS DESIGNATED CONTRACTOR MAY ENTER AND PERFORM MAINTENANCE NECESSARY TO ACHIEVE THE INTENDED DRAINAGE FUNCTIONS AND MAY REMOVE ANY OBSTRUCTION OR CORRECT ANY ALTERATION OF GRADE, AND THE COSTS THEREOF SHALL BE PAID BY THE HOMEOWNERS ASSOCIATION. IN THE EVENT THE HOMEOWNERS ASSOCIATION FAILS TO PAY THE COST OF MAINTENANCE AFTER COMPLETION OF THE MAINTENANCE AND RECEIPT OF A STATEMENT OF COSTS, THE CITY OF BROKEN ARROW, OKLAHOMA, MAY FILE OF RECORD A COPY OF THE STATEMENT OF COSTS IN THE LAND RECORDS OF THE BROKEN ARROW COUNTY CLERK, AND THEREAFTER THE COSTS SHALL BE A LIEN AGAINST EACH LOT IN THE SUBDIVISION, PROVIDED THAT THE LIEN AGAINST A LOT SHALL BE EQUAL TO 1/88TH OF THE COSTS. A LIEN ESTABLISHED AS ABOVE PROVIDED MAY BE FORECLOSED BY THE CITY OF BROKEN ARROW, OKLAHOMA.
- H. **RESERVE AREA C (PRIVATE STREETS)**  
THE OWNER/DEVELOPER HEREBY DEDICATES THE AREAS DEDICATED ON THE ACCOMPANYING PLAT AS RESERVE C AS PRIVATE STREETS FOR THE COMMON USE AND ENJOYMENT OF THE PROPERTY OWNERS ADJACENT THERETO, AND THEIR HEIRS GUESTS AND INVITEES, FOR THE PURPOSE OF PROVIDING VEHICULAR AND PEDESTRIAN ACCESS TO AND FROM THE VARIOUS LOTS AND TO AND FORM THE PUBLIC STREETS. SAID STREETS SHALL BE MAINTAINED BY THE HOME OWNER'S ASSOCIATION AT THEIR SOLE COSTS.

- I. **SIDEWALKS**  
SIDEWALKS ARE REQUIRED ALONG STREETS DESIGNATED BY AND IN ACCORDANCE WITH SUBDIVISION REGULATIONS. REQUIRED SIDEWALKS SHALL BE CONSTRUCTED IN CONFORMANCE WITH CITY OF BROKEN ARROW ENGINEERING DESIGN STANDARDS. THE OWNER SHALL CONSTRUCT REQUIRED SIDEWALKS WITHIN RESERVE AREAS, COMMON AREAS AND ALONG ARTERIAL STREET FRONTAGES OF ABUTTING LOTS HAVING ACCESS ONTO MINOR STREETS. WHERE SIDEWALKS ARE NOT CONSTRUCTED BY THE OWNER, THE BUILDER OF EACH LOT SHALL CONSTRUCT THE REQUIRED SIDEWALK.
- J. **MINIMUM BUILDING SETBACKS AND YARDS**
- NO BUILDING SHALL BE LOCATED NEARER TO THE RIGHT OF WAY OF AN ADJOINING PUBLIC STREET THAN THE BUILDING LINE DEPICTED ON THE ACCOMPANYING PLAT.
  - EACH LOT SHALL MAINTAIN SIDE YARDS WHICH IN THE AGGREGATE ARE NOT LESS THAN TEN (10) FEET IN WIDTH AND NO SIDE YARD SHALL BE LESS THAN FIVE (5) FEET IN WIDTH. SIDE YARD ABUTTING A STREET SHALL NOT BE LESS THAN FIFTEEN (15) FEET, UNLESS THE GARAGE ENTRY IS LOCATED ON SUCH SIDE, WHERE IT WILL BE NO LESS THAN TWENTY-FIVE (25) FEET. NO ACCESS SHALL BE ALLOWED TO STREETS WHERE ABUTTING BUILDING LINE IS LESS THAN 25 FEET.
  - THE MINIMUM REAR YARD SHALL BE TWENTY (20) FEET. CUSTOMARY ACCESSORY STRUCTURES MAY BE LOCATED IN THE REQUIRED REAR YARD, BUT NO BUILDING SHALL BE ERECTED NEARER THAN FIVE (5) FEET TO ANY LOT LINE.
  - NO BUILDING, WHETHER PRINCIPAL OR ACCESSORY, SHALL ENCROACH UPON ANY UTILITY EASEMENT AS DEPICTED ON THE ACCOMPANYING PLAT.

**SECTION II. PLANNED UNIT DEVELOPMENT RESTRICTIONS**

- A. **PLANNED UNIT DEVELOPMENT RESTRICTIONS**  
WHEREAS BLOCKS 2, 3, 4, 6, 8 AND RESERVES A, B & C OF THE VILLAGES AT SEVEN OAKS SOUTH WERE SUBMITTED AS A PLANNED UNIT DEVELOPMENT, DESIGNATED AS PUD 280 PURSUANT TO SECTION 3, ARTICLE VII OF THE ZONING ORDINANCE OF THE CITY OF BROKEN ARROW, OKLAHOMA, (ORDINANCE NO. 1560) AS AMENDED AND EXISTED ON MAY 2, 2005 (HEREINAFTER REFERRED TO AS THE "BROKEN ARROW ZONING ORDINANCE"), WHICH PUD - 280 WAS RECOMMENDED FOR APPROVAL BY THE PLANNING COMMISSION ON AUGUST 9 2018, AND WAS APPROVED BY THE COUNCIL OF THE CITY OF BROKEN ARROW, OKLAHOMA, ON SEPTEMBER 4 2018; AND WHEREAS, THE PLANNED UNIT DEVELOPMENT PROVISIONS OF THE BROKEN ARROW ZONING CODE REQUIRE THE ESTABLISHMENT OF COVENANTS OF RECORD, INURING TO AND ENFORCEABLE BY THE CITY OF BROKEN ARROW, OKLAHOMA, SUFFICIENT TO ASSURE CONTINUED COMPLIANCE WITH THE APPROVED PLANNED UNIT DEVELOPMENT, AND WHEREAS, THE OWNER/DEVELOPER DESIRES TO ESTABLISH RESTRICTIONS FOR THE PURPOSE OF PROVIDING FOR AN ORDERLY DEVELOPMENT AND TO INURE ADEQUATE RESTRICTIONS FOR THE MUTUAL BENEFIT OF THE OWNER/DEVELOPER, ITS SUCCESSORS AND ASSIGNS, AND THE CITY OF BROKEN ARROW, OKLAHOMA; THEREFORE, THE OWNER/DEVELOPER DOES HEREBY IMPOSE THE FOLLOWING RESTRICTIONS AND COVENANTS WHICH SHALL BE COVENANTS RUNNING WITH THE LAND AND SHALL BE BINDING UPON THE OWNER/DEVELOPER, ITS SUCCESSORS AND ASSIGNS, AND SHALL BE ENFORCEABLE AS HEREINAFTER SET FORTH: COVENANTS SET OUT IN SECTION II SHALL APPLY TO BLOCKS 2, 3, 4, 6, 8 AND RESERVES A, B & C ONLY.

B.	<u>PERMITTED USES</u>	SINGLE FAMILY DETACHED DWELLINGS
C.	<u>GROSS LAND AREA</u>	11.79 ACRES FOR PUD-280A
D.	<u>MAXIMUM NUMBER OF DWELLING UNITS</u>	49
E.	<u>MINIMUM LOT WIDTH</u>	52 FEET
F.	<u>MINIMUM LOT AREA</u>	6,200 SF
G.	<u>MAXIMUM BUILDING HEIGHT</u>	PER RS-4 ZONING
H.	<u>YARD AND BUILDING SETBACKS</u>	PER RS-4 ZONING

- I. **PRIVATE STREETS (RESERVE C)**  
ALL STREETS WITHIN THE PUD WILL BE PRIVATELY MAINTAINED BY THE HOMEOWNER'S ASSOCIATION. ALL STREETS SHALL BE CONSTRUCTED ACCORDING TO THE CITY OF BROKEN ARROW MINOR RESIDENTIAL PUBLIC STREET STANDARD AND WHOLLY CONTAINED WITHIN RESERVE 'C' WITH ONE EXCEPTION. SOUTH 12TH PLACE WILL BE ALLOWED TO EXCEED THE 900 MAXIMUM BLOCK LENGTH. STREETS SHALL BE DESIGNED IN ACCORDANCE WITH CITY OF BROKEN ARROW ENGINEERING DESIGN CRITERIA. STREETS SHALL BE GATED PROVIDED ALL SUCH GATES MEET THE ACCESS REQUIREMENTS OF THE CITY OF BROKEN ARROW FIRE MARSHAL. RESERVE AREAS C SHALL BE CONVEYED TO THE HOMEOWNER'S ASSOCIATION WHICH SHALL BE RESPONSIBLE FOR THE MAINTENANCE OF ALL IMPROVEMENTS CONTAINED WITHIN THAT RESERVE.
- J. **LANDSCAPE AND SCREENING STANDARDS**  
LANDSCAPING AND SCREENING WILL BE PROVIDED ALONG NEW ORLEANS STREET AND SHALL CONFORM TO THE CITY OF BROKEN ARROW ZONING ORDINANCE 1930 AS IT PERTAINS TO RS-4 ZONING. FENCING PLANS SHALL BE PRESENTED TO AND APPROVED BY THE CITY OF BROKEN ARROW AT THE SAME TIME THE LANDSCAPE PLANS ARE SUBMITTED FOR REVIEW.

**SECTION III. PRIVATE RESTRICTIONS**

- A. **ARCHITECTURAL COMMITTEE**
- PLAN REVIEW. NO BUILDING, FENCE, WALL, OR EXTERIOR ANTENNA SHALL BE ERECTED, PLACED OR ALTERED (INCLUDING EXTERIOR PAINTING) ON ANY LOT UNTIL THE PLANS AND SPECIFICATIONS HAVE BEEN APPROVED IN WRITING BY THE OWNER/DEVELOPER OR ITS AUTHORIZED REPRESENTATIVES OR SUCCESSORS, WHICH ARE HEREINAFTER REFERRED TO AS THE "ARCHITECTURAL COMMITTEE". FOR EACH BUILDING, THE REQUIRED PLANS AND SPECIFICATIONS SHALL BE SUBMITTED IN DUPLICATE AND INCLUDE A SITE PLAN, FLOOR PLAN, EXTERIOR ELEVATIONS, DRAINAGE AND GRADING PLANS, EXTERIOR MATERIALS AND COLOR SCHEME. IN THE EVENT THE ARCHITECTURAL COMMITTEE FAILS TO APPROVE OR DISAPPROVE PLANS AND SPECIFICATIONS SUBMITTED TO IT AS HEREIN REQUIRED WITHIN THIRTY (30) DAYS AFTER SUBMISSION, THE PLANS SO SUBMITTED SHALL BE DEEMED APPROVED. THE DEVELOPMENT AND USE OF THE SUBJECT LOT SHALL THEREAFTER BE IN SUBSTANTIAL COMPLIANCE WITH THE APPROVED PLANS OR APPROVED AMENDMENTS THERETO. IN THE EVENT NO SUIT TO ENJOIN THE ERECTION OF THE BUILDING OR STRUCTURE OR THE MAKING OF AN ALTERATION HAS BEEN COMMENCED PRIOR TO THE 30TH DAY FOLLOWING COMPLETION THEREOF, APPROVAL OF THE ARCHITECTURAL COMMITTEE SHALL NOT BE REQUIRED AND THIS COVENANT SHALL BE DEEMED TO HAVE BEEN FULLY COMPLIED WITH.
  - COMMITTEE PURPOSE. THE ARCHITECTURAL COMMITTEE'S PURPOSE IS TO PROMOTE GOOD DESIGN AND COMPATIBILITY WITHIN THE SUBDIVISION AND IN ITS REVIEW OF PLANS OR DETERMINATION OF ANY WAIVER AS HEREINAFTER AUTHORIZED MAY TAKE INTO CONSIDERATION THE NATURE AND CHARACTER OF THE PROPOSED BUILDING OR STRUCTURE, THE MATERIALS OF WHICH IT IS TO BE BUILT, THE AVAILABILITY OF ALTERNATIVE MATERIALS, THE SITE UPON WHICH IT IS PROPOSED TO BE ERECTED AND THE HARMONY THEREOF WITH THE SURROUNDING AREA. THE ARCHITECTURAL COMMITTEE SHALL NOT BE LIABLE FOR ANY APPROVAL, DISAPPROVAL OR FAILURE TO APPROVE HEREUNDER, AND ITS APPROVAL OF BUILDING PLANS SHALL NOT CONSTITUTE A WARRANTY OR RESPONSIBILITY FOR BUILDING METHODS, MATERIALS, PROCEDURES, STRUCTURAL DESIGN, GRADING OR DRAINAGE OR CODE VIOLATIONS. THE APPROVAL OR FAILURE TO APPROVE BUILDING PLANS SHALL NOT BE DEEMED A WAIVER OF ANY RESTRICTION. NOTHING HEREIN CONTAINED SHALL BE DEEMED TO PREVENT ANY LOT OWNER IN THE SUBDIVISION FROM PROSECUTING ANY LEGAL ACTION RELATING TO IMPROVEMENTS WITHIN THE SUBDIVISION WHICH THEY WOULD OTHERWISE BE ENTITLED TO PROSECUTE.
  - TRANSFER OF DUTIES. THE POWERS AND DUTIES OF THE ARCHITECTURAL COMMITTEE SHALL, ON JANUARY 1, 2025, BE DEEMED TRANSFERRED TO THE SEVEN OAKS SOUTH HOMEOWNERS' ASSOCIATION, INC. (TO BE ESTABLISHED AS SET FORTH WITHIN SECTION IV HEREOF), OR UPON WRITTEN ASSIGNMENT TO SAID HOMEOWNERS' ASSOCIATION BY THE ARCHITECTURAL COMMITTEE, WHICHEVER EVENT FIRST OCCURS, AND THEREAFTER THE FOREGOING POWERS AND DUTIES SHALL BE EXERCISED BY THE BOARD OF DIRECTORS OF THE ASSOCIATION.
- B. **USE**  
THE USE OF THE LOTS SHALL BE LIMITED TO DETACHED SINGLE-FAMILY RESIDENCES AND CUSTOMARY ACCESSORY USES. ONLY ONE RESIDENCE SHALL BE PERMITTED UPON A LOT.

PLOT DATE: Thu, 14 Feb 2019 FILE: P:\181426-VILLAGES AT SEVEN OAKS SOUTH\SEVEN OAKS SOUTH VILLAGES

PRELIMINARY PLAT

# The Villages at Seven Oaks South

PUD 280A

A SUBDIVISION IN THE CITY OF BROKEN ARROW, TULSA COUNTY, OKLAHOMA BEING A PART OF THE E/2 NW/4 OF SECTION TWENTY-FIVE (25), TOWNSHIP 18 NORTH, RANGE 14 EAST, OF THE INDIAN BASE AND MERIDIAN.

## OWNER/DEVELOPER

SEVEN OAKS SOUTH, LLC  
1420 WEST KENOSHA  
BROKEN ARROW, OK 74012  
PHONE: 918-261-5200  
ATTN: CHUCK RAMSAY

## ENGINEER/SURVEYOR

AAB ENGINEERING LLC  
CERTIFICATE OF AUTHORIZATION NO. 6318, EXP. JUNE, 30, 2020  
PO BOX 2136  
SAND SPRINGS, OK 74063  
PHONE: 918.514.4283  
FAX: 918.514.4288  
EMAIL: ALAN @ AABENG.COM

### C. FLOOR AREA

- A SINGLE STORY DWELLING SHALL HAVE AT LEAST 1,500 SQUARE FEET OF FINISHED HEATED LIVING AREA.
- IF A DWELLING HAS TWO LEVELS OR STORIES IMMEDIATELY ABOVE AND BELOW EACH OTHER MEASURED VERTICALLY AND ALL SUCH LEVELS OR STORIES ARE ABOVE THE FINISHED EXTERIOR GRADE OF SUCH DWELLING, THEN SUCH DWELLING SHALL HAVE AT LEAST 1,200 SQUARE FEET OF FINISHED HEATED LIVING AREA ON THE FIRST STORY OR LEVEL AND SHALL HAVE A TOTAL OF THE VARIOUS LEVELS OR STORIES OF AT LEAST 1,800 SQUARE FEET OF FINISHED HEATED LIVING AREA.
- THE COMPUTATION OF LIVING AREA SHALL NOT INCLUDE ANY BASEMENT, GARAGE, OR ATTIC AREA USED FOR STORAGE. ALL LIVING AREA MEASUREMENTS SHALL BE TAKEN HORIZONTALLY AT THE TOP PLATE LEVEL TO THE FACE OF THE OUTSIDE WALL. REQUIRED LIVING AREA MUST AVERAGE AT LEAST SEVEN (7) FEET SIX (6) INCHES IN HEIGHT, EXCEPT THAT IN THE COMPUTATION OF SECOND OR UPPER STORY LIVING AREAS, THE HEIGHT SHALL BE SEVEN (7) FEET SIX (6) INCHES FOR AT LEAST ONE HALF (1/2) OF THE REQUIRED LIVING AREAS, AND ANY AREA LESS THAN FIVE (5) FEET IN HEIGHT SHALL BE EXCLUDED.
- THE ARCHITECTURAL COMMITTEE MAY WAIVE, IN THE PARTICULAR INSTANCE, UPON WRITTEN REQUEST, THE FLOOR AREA REQUIREMENTS SET OUT IN PARAGRAPH 1 AND 2 OF THIS SUBSECTION C.

### D. MAXIMUM BUILDING HEIGHT

NO BUILDING SHALL EXCEED TWO AND ONE HALF STORIES OR THIRTY- FIVE FEET IN HEIGHT.

### E. GARAGES

WITHIN EACH LOT THERE SHALL BE PROVIDED A MINIMUM OF TWO PARKING SPACES WITHIN AN ATTACHED GARAGE. GARAGES SHALL BE ENCLOSED, AND CARPORTS ARE PROHIBITED. GLASS IN GARAGE DOORS IS PROHIBITED.

### F. FOUNDATIONS

ANY EXPOSED FOUNDATION SHALL BE BRICK, STONE OR STUCCO. NO STEM WALL SHALL BE EXPOSED.

### G. MASONRY

THE EXTERIOR SURFACE OF ALL DWELLINGS, EXCEPTING WINDOWS AND DOORS, SHALL BE 100% BRICK, NATURAL ROCK OR STUCCO, TO THE FIRST FLOOR TOP PLATE, PROVIDED HOWEVER THAT THE ARCHITECTURAL COMMITTEE MAY, IN THE PARTICULAR INSTANCE, WAIVE THIS REQUIREMENT.

### H. WINDOWS

WITHIN A DWELLING, ALUMINUM WINDOWS HAVING A MILL FINISH ARE PROHIBITED.

### I. ROOF PITCH

NO DWELLING SHALL HAVE A ROOF PITCH OF LESS THAN 6/12, EXCEPT FOR PORCHES AND PATIOS THAT IN NO EVENT SHALL HAVE A ROOF PITCH OF LESS THAN 4/12.

### J. ROOFING MATERIALS

ROOFING FOR A DWELLING SHALL BE SELF-SEALING COMPOSITION SHINGLES, TAMKO HERITAGE 30 YEAR WEATHERED WOOD IN COLOR. PROVIDED, HOWEVER, THAT IF SUCH ROOFING SHOULD NOT BE REASONABLY AVAILABLE, ALTERNATIVE ROOFING APPROVED BY THE ARCHITECTURAL COMMITTEE SHALL BE PERMITTED UPON DETERMINATION OF THE ARCHITECTURAL COMMITTEE THAT THE ALTERNATIVE IS OF EQUAL OR SUPERIOR QUALITY AND OF A DESIGN AND COLOR COMPATIBLE WITH THE ROOFING MATERIAL ABOVE SPECIFIED.

### K. DRIVEWAYS

DRIVEWAYS SHALL BE CONCRETE, SHALL BE THE SAME COLOR AS THE SIDEWALKS AND CURBS WITHIN THE SUBDIVISION, AND SHALL REQUIRE APPROVAL OF THE ARCHITECTURAL COMMITTEE.

### L. FENCING

- ALL FENCING SHALL BE IN ACCORDANCE WITH THE CITY OF BROKEN ARROW ZONING CODE. INTERIOR FENCING OR WALLS SHALL NOT EXTEND BEYOND THE BUILDING LINES OF THE LOT AND, IF A DWELLING IS BUILT BEHIND THE FRONT BUILDING LINE OF A LOT, NO FENCE MAY EXTEND BEYOND THE POINT NEAREST THE STREET AT EACH END CORNER OF THE DWELLING, PROVIDED, HOWEVER, ON CORNER LOTS, FENCING MAY EXTEND TO THE SIDE YARD LOT LINE, EXCEPT AS SPECIFIED IN SECTION L(2) IMMEDIATELY BELOW. (I) ALL FENCING SHALL BE 6" PRIVACY CONSTRUCTED OF STANDARD WOOD; AND (II) CHAIN LINK, BARBED WIRE, MESH AND OTHER METAL FENCING IS PROHIBITED. NO FENCE SHALL EXCEED 6 FEET IN HEIGHT, FENCES FACING THE STREET AND INSTALLED IN SIDE YARDS BETWEEN DWELLINGS SHALL BE ALIGNED WITH EXISTING FENCES ON ADJOINING LOTS WHERE POSSIBLE. THE GOOD SIDE OF EVERY FENCE SHALL FACE THE STREET. OTHER TYPES OF FENCING CONSTRUCTED OF WROUGHT IRON, BRICK, OR STONE MAY BE PERMITTED IF PREAPPROVED BY THE ARCHITECTURAL COMMITTEE. VINYL COATED CHAIN LINK FENCE, WITH WOODED POST AND TOP RAIL IS RESTRICTED TO RESERVE AREAS ONLY.
- WITH RESPECT TO LOTS WHICH ARE CONTIGUOUS WITH LAKES, PONDS OR DETENTION FACILITIES IN RESERVE AREAS, THE SIDE YARD FENCES SHALL BE TAPERED IN HEIGHT TO FOUR FEET (4') WITHIN THIRTY FEET (30') OF THE PERIMETER FENCING THE LAKE AREA AND WITHIN SAID 30' AREA SHALL BE OF THE SAME SPECIFICATIONS AS THE PERIMETER FENCING DESCRIBED BELOW. PERIMETER FENCING SHALL BE REQUIRED ALONG AND PARALLEL TO THE COMMON BOUNDARY OF ALL LOTS WITH THE RESERVE AREAS WITH LAKES, SAID PERIMETER FENCING SHALL BE CONSTRUCTED OF VINYL COATED CHAIN LINK RESIDENTIAL GRADE MATERIAL WITH WOODEN TOP RAILS AND POSTS. SUCH PERIMETER FENCING SHALL BE FOUR FEET (4') IN HEIGHT AND UNIFORM IN HEIGHT, DESIGN AND MATERIAL.

### M. PERIMETER FENCING

THE OWNER/DEVELOPER HEREIN ESTABLISHES AND RESERVES FOR SUBSEQUENT CONVEYANCE TO THE HOMEOWNERS' ASSOCIATION A PERPETUAL EXCLUSIVE EASEMENT TO ERECT AND MAINTAIN FENCING, WALLS AND LANDSCAPING ALONG THE BOUNDARIES FOR THE SUBDIVISION ADJACENT TO EAST NEW ORLEANS STREET WITHIN THE FENCE EASEMENTS DEPICTED ON THE ACCOMPANYING PLAT AS "F&E."

### N. SEASONAL DECORATIONS

ALL SEASONAL DECORATIONS SHALL BE REMOVED NO LATER THAN THIRTY (30) CALENDAR DAYS FROM THE DAY OF THE ACTUAL HOLIDAY.

### O. ON-SITE CONSTRUCTION

NO RESIDENCE OR BUILDING BUILT OFF-SITE SHALL BE MOVED TO, OR PLACED ON, ANY LOT.

### P. OUTBUILDINGS

WITHIN EACH LOT, OUTBUILDINGS ARE PROHIBITED.

### Q. SWIMMING POOLS

ABOVE GROUND SWIMMING POOLS ARE PROHIBITED.

### R. ANTENNAS

EXTERIOR TELEVISION, "CB" RADIO OR OTHER TYPE ANTENNAS INCLUDING SATELLITE DISHES SHALL BE PROHIBITED, EXCEPT SATELLITE DISHES NOT EXCEEDING 20" IN DIAMETER MAY BE AFFIXED TO A REAR BUILDING WALL OR DORMER IF BELOW THE EAVE, OR GROUND MOUNTED WITHIN A REAR YARD IF NOT EXCEEDING 6' IN HEIGHT, AND IN EACH INSTANCE THE SATELLITE DISH SHALL NOT BE VISIBLE FROM THE STREET VIEW OF THE DWELLING.

### S. LOT MAINTENANCE

NO INOPERATIVE VEHICLE OR MACHINERY SHALL BE STORED ON ANY LOT AND EACH LOT SHALL BE MAINTAINED IN A NEAT AND ORDERLY CONDITION FREE OF RUBBISH, TRASH AND OTHER DEBRIS AND SHALL BE CUT, TRIMMED OR MOWED TO PREVENT GROWTH OF WEEDS OR TALL GRASS.

### T. RECREATIONAL VEHICLES

BOATS, TRAILERS, CAMPERS AND OTHER RECREATIONAL VEHICULAR EQUIPMENT SHALL NOT BE STORED ON ANY LOT EXCEPT WITHIN AN ENCLOSED GARAGE.

### U. NON-RECREATIONAL TRAILERS, MACHINERY AND EQUIPMENT

NO NON-RECREATIONAL TRAILERS, MACHINERY OR EQUIPMENT SHALL BE STORED, PLACED OR PARKED ON ANY LOT, EXCEPT WITHIN AN ENCLOSED GARAGE, OR ON ANY STREET WITHIN THE SUBDIVISION; PROVIDED HOWEVER, NOTHING HEREIN SHALL PROHIBIT THE PARKING OF VEHICLES, MACHINERY AND EQUIPMENT WHEN BEING UTILIZED IN CONNECTION WITH SERVICES PERTAINING TO A RESIDENCE.

### V. CLOTHESLINES AND GARBAGE RECEPTACLES

EXPOSED CLOTHESLINE POLES OR OTHER OUTSIDE DRYING APPARATUS ARE PROHIBITED, AND NO EXPOSED GARBAGE CAN, TRASH CAN OR ANY TRASH BURNING APPARATUS OR STRUCTURE SHALL BE PLACED ON ANY LOT OR ANY RESERVE AREA.

### W. ANIMALS

NO ANIMALS, LIVESTOCK OR POULTRY OF ANY KIND MAY BE MAINTAINED, BRED, SOLD OR KEPT EXCEPT THAT TWO DOGS, TWO CATS AND OTHER HOUSEHOLD PETS MAY BE KEPT PROVIDED THAT THEY ARE NOT USED FOR COMMERCIAL PURPOSES.

### X. NOXIOUS ACTIVITY

NO NOXIOUS OR OFFENSIVE TRADE OR ACTIVITY SHALL BE CARRIED OUT UPON ANY LOT OR UPON ANY RESERVE AREA, NOR SHALL ANYTHING BE DONE THEREON THAT MAY BE OR MAY BECOME AN ANNOYANCE OR NUISANCE TO THE NEIGHBORHOOD.

### Y. SIGNAGE

NO SIGN OF ANY KIND SHALL BE DISPLAYED TO THE PUBLIC VIEW ON ANY LOT EXCEPT ONE SIGN OF NOT MORE THAN FIVE (5) SQUARE FEET ADVERTISING THE PROPERTY FOR SALE OR RENT. SIGNS USED BY THE OWNER/DEVELOPER OR A BUILDER TO ADVERTISE THE PROPERTY DURING THE CONSTRUCTION AND SALES PERIOD MAY BE UP TO TWELVE (12) SQUARE FEET.

### Z. MATERIALS AND STORAGE

NO LOT SHALL BE USED FOR THE STORAGE OF MATERIALS FOR A PERIOD OF GREATER THAN THIRTY (30) DAYS PRIOR TO THE START OF CONSTRUCTION AND THE CONSTRUCTION SHALL BE COMPLETED WITHIN SIX (6) MONTHS THEREAFTER. EACH LOT SHALL BE MAINTAINED IN A NEAT AND ORDERLY CONDITION.

### AA. GARAGE SALES/YARD SALES

GARAGE SALES/YARD SALES WILL BE ALLOWED ONCE EACH CALENDAR YEAR, THE DATE WILL BE SET BY THE BOARD OF DIRECTORS OF THE SEVEN OAKS SOUTH HOMEOWNERS' ASSOCIATION.

### AB. TEMPORARY TRASH RECEPTACLES

A TEMPORARY TRASH RECEPTACLE IS REQUIRED ON EACH LOT DURING THE CONSTRUCTION OF ANY DWELLING IN THE SUBDIVISION. THE TEMPORARY TRASH RECEPTACLE SHALL BE MAINTAINED BY THE LOT OWNER AND SHALL BE EMPTIED ON A REGULAR BASIS OR AS NEEDED.

### AC. BASKETBALL GOALS

NO BASKETBALL GOAL OR STRUCTURES ARE ALLOWED IN ANY OF THE STREET RIGHTS OF WAY.

## SECTION IV. HOMEOWNERS' ASSOCIATION

### A. FORMATION OF HOMEOWNERS' ASSOCIATION

THE OWNER/DEVELOPER HAS FORMED OR SHALL CAUSE TO BE FORMED AN ASSOCIATION OF THE OWNERS OF THE LOTS WITHIN THE VILLAGES AT SEVEN OAKS SOUTH (HEREINAFTER REFERRED TO AS THE "HOMEOWNERS' ASSOCIATION") TO BE ESTABLISHED IN ACCORDANCE WITH THE STATUTES OF THE STATE OF OKLAHOMA, AND TO BE FORMED FOR THE GENERAL PURPOSES OF MAINTAINING THE COMMON AREAS, INCLUDING BUT WITHOUT LIMITATION THE STORM WATER DETENTION FACILITIES AND RESERVE AREAS, AND ENHANCING THE VALUE, DESIRABILITY AND ATTRACTIVENESS OF ALL PHASES OF THE VILLAGES AT SEVEN OAKS SOUTH.

### B. MEMBERSHIP

EVERY PERSON OR ENTITY WHO IS A RECORD OWNER OF THE FEE INTEREST OF A LOT SHALL BE A MEMBER OF THE HOMEOWNERS' ASSOCIATION. MEMBERSHIP SHALL BE APPURTENANT TO AND MAY NOT BE SEPARATED FROM THE OWNERSHIP OF A LOT.

### C. ASSESSMENT

EACH RECORD OWNER OF A LOT SHALL BE SUBJECT TO ASSESSMENT BY THE HOMEOWNERS' ASSOCIATION FOR THE PURPOSES OF IMPROVEMENT AND MAINTENANCE OF THE STORM WATER DETENTION FACILITIES, RESERVE AREAS AND OTHER COMMON AREAS.

## SECTION V. ENFORCEMENT, DURATION, AMENDMENT AND SEVERABILITY

### A. ENFORCEMENT

THE RESTRICTIONS HEREIN SET FORTH ARE COVENANTS TO RUN WITH THE LAND AND SHALL BE BINDING UPON THE OWNER/DEVELOPER, ITS SUCCESSORS AND ASSIGNS. WITHIN THE PROVISIONS OF SECTION I. PUBLIC STREETS, EASEMENTS AND UTILITIES ARE SET FORTH CERTAIN COVENANTS AND THE ENFORCEMENT RIGHTS PERTAINING THERETO, AND ADDITIONALLY THE COVENANTS WITHIN SECTION I. WHETHER OR NOT SPECIFICALLY THEREIN SO STATED SHALL INURE TO THE BENEFIT OF AND SHALL BE ENFORCEABLE BY THE CITY OF BROKEN ARROW, OKLAHOMA. THE COVENANTS CONTAINED IN SECTION II, PRIVATE RESTRICTIONS, AND SECTION III, HOMEOWNERS' ASSOCIATION, SHALL INURE TO THE BENEFIT OF ANY OWNER OF A LOT AND THE HOMEOWNERS' ASSOCIATION. IF THE UNDERSIGNED OWNER/DEVELOPER, OR ITS SUCCESSORS OR ASSIGNS, SHALL VIOLATE ANY OF THE COVENANTS WITHIN SECTION IV, IT SHALL BE LAWFUL FOR ANY OWNER OF A LOT OR THE HOMEOWNERS' ASSOCIATION TO MAINTAIN ANY ACTION AT LAW OR IN EQUITY AGAINST THE PERSON OR PERSONS VIOLATING OR ATTEMPTING TO VIOLATE ANY SUCH COVENANT, TO PREVENT HIM OR THEM FROM SO DOING OR TO COMPEL COMPLIANCE WITH THE COVENANT. IN ANY JUDICIAL ACTION BROUGHT TO ENFORCE THE COVENANTS ESTABLISHED WITHIN THIS DEED OF DEDICATION, THE DEFENSE THAT THE PARTY INITIATING THE EQUITABLE PROCEEDING HAS AN ADEQUATE REMEDY AT LAW IS HEREBY WAIVED, IN ANY JUDICIAL ACTION BROUGHT BY ANY OWNER OF A LOT OR THE ASSOCIATION, WHICH ACTION SEEKS TO ENFORCE THE COVENANTS CONTAINED IN SECTION IV AND/OR TO RECOVER DAMAGES FOR THE BREACH THEREOF, THE PREVAILING PARTY SHALL BE ENTITLED TO RECEIVE REASONABLE ATTORNEY FEES AND COSTS AND EXPENSES INCURRED IN SUCH ACTION.

### B. DURATION

THESE RESTRICTIONS, TO THE EXTENT PERMITTED BY APPLICABLE LAW, SHALL BE PERPETUAL BUT IN ANY EVENT SHALL BE IN FORCE AND EFFECT FOR A TERM OF NOT LESS THAN THIRTY (30) YEARS FROM THE DATE OF THE RECORDING OF THIS DEED OF DEDICATION UNLESS TERMINATED OR AMENDED AS HEREINAFTER PROVIDED.

### C. AMENDMENT

THE COVENANTS CONTAINED WITHIN SECTION I. PUBLIC STREETS, EASEMENTS AND UTILITIES, MAY BE AMENDED OR TERMINATED AT ANY TIME BY A WRITTEN INSTRUMENT SIGNED AND ACKNOWLEDGED BY THE OWNER OF THE LAND TO WHICH THE AMENDMENT OR TERMINATION IS TO BE APPLICABLE AND APPROVED BY THE BROKEN ARROW PLANNING COMMISSION, OR ITS SUCCESSORS AND THE CITY OF BROKEN ARROW, OKLAHOMA. THE COVENANTS AND RESTRICTIONS CONTAINED WITHIN SECTION III, PRIVATE RESTRICTIONS, MAY BE AMENDED OR TERMINATED AT ANY TIME BY A WRITTEN INSTRUMENT SIGNED AND ACKNOWLEDGED BY THE OWNER/DEVELOPER DURING SUCH PERIOD THAT THE OWNER/DEVELOPER IS THE OWNER OF AT LEAST 1 LOT, OR ALTERNATIVELY THE COVENANTS AND RESTRICTIONS MAY BE AMENDED OR TERMINATED AT ANY TIME BY A WRITTEN INSTRUMENT SIGNED AND ACKNOWLEDGED BY THE OWNERS OF 60% OF THE LOTS WITHIN THE SUBDIVISION. IN THE EVENT OF ANY CONFLICT BETWEEN AN AMENDMENT OR TERMINATION PROPERLY EXECUTED BY THE OWNER/DEVELOPER (DURING ITS OWNERSHIP OF AT LEAST 1 LOT) AND ANY AMENDMENT OR TERMINATION PROPERLY EXECUTED BY THE OWNERS OF AT LEAST 60% OF THE LOTS, THE INSTRUMENT EXECUTED BY THE OWNER/DEVELOPER SHALL PREVAIL DURING ITS OWNERSHIP OF AT LEAST 1 LOT. THE COVENANTS AND RESTRICTIONS CONTAINED WITHIN SECTION IV, HOMEOWNERS' ASSOCIATION, MAY BE AMENDED OR TERMINATED AT ANY TIME BY A WRITTEN INSTRUMENT SIGNED AND ACKNOWLEDGED BY THE OWNER/DEVELOPER DURING SUCH PERIOD THAT THE OWNER/DEVELOPER IS THE OWNER OF AT LEAST 1 LOT, OR ALTERNATIVELY THE COVENANTS AND RESTRICTIONS MAY BE AMENDED OR TERMINATED AT ANY TIME BY A MAJORITY VOTE OF THE MEMBERS OF THE HOMEOWNER' ASSOCIATION AS EVIDENCED BY WRITTEN INSTRUMENT SIGNED AND ACKNOWLEDGED BY THE PRESIDENT OF THE HOMEOWNERS' ASSOCIATION. IN THE EVENT OF ANY CONFLICT BETWEEN AN AMENDMENT OR TERMINATION PROPERLY EXECUTED BY THE OWNER/DEVELOPER (DURING ITS OWNERSHIP OF AT LEAST 1 LOT) AND ANY AMENDMENT OR TERMINATION EVIDENCED BY AN INSTRUMENT PROPERLY EXECUTED BY THE PRESIDENT OF THE HOMEOWNERS' ASSOCIATION, THE INSTRUMENT EXECUTED BY THE OWNER/DEVELOPER SHALL PREVAIL DURING ITS OWNERSHIP OF AT LEAST 1 LOT. THE PROVISIONS OF ANY INSTRUMENT AMENDING OR TERMINATING COVENANTS AS ABOVE SET FORTH SHALL BE EFFECTIVE FROM AND AFTER THE DATE, IT IS PROPERLY RECORDED.

### D. SEVERABILITY

INVALIDATION OF ANY RESTRICTION SET FORTH HEREIN, OR ANY PART THEREOF, BY AN ORDER, JUDGMENT, OR DECREE OF ANY COURT, OR OTHERWISE, SHALL NOT INVALIDATE OR AFFECT ANY OF THE OTHER RESTRICTIONS OR ANY PART THEREOF AS SET FORTH HEREIN, WHICH SHALL REMAIN IN FULL FORCE AND EFFECT.

IN WITNESS WHEREOF: SEVEN OAKS SOUTH, LLC, AN OKLAHOMA LIMITED LIABILITY COMPANY, HAS EXECUTED THIS INSTRUMENT THIS \_\_\_\_\_ DAY OF \_\_\_\_\_, 2019.

SEVEN OAKS SOUTH, LLC,  
AN OKLAHOMA LIMITED LIABILITY COMPANY

BY: \_\_\_\_\_  
CHUCK RAMSAY, MANAGER

STATE OF OKLAHOMA )  
) SS  
COUNTY OF TULSA )

THIS INSTRUMENT WAS ACKNOWLEDGED BEFORE ME ON THIS \_\_\_\_\_ DAY OF \_\_\_\_\_, 2019, BY  
CHUCK RAMSAY, MANAGER OF SEVEN OAKS SOUTH, LLC

NOTARY PUBLIC  
MY COMMISSION EXPIRES: \_\_\_\_\_  
COMMISSION NUMBER: \_\_\_\_\_

### CERTIFICATE OF SURVEY

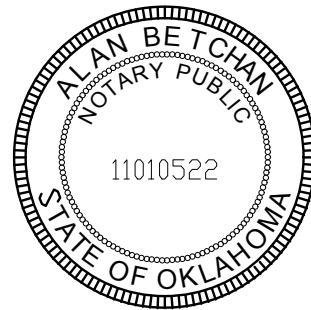
I, JAY P. BISSELL, A LICENSED PROFESSIONAL LAND SURVEYOR IN THE STATE OF OKLAHOMA, HEREBY CERTIFY THAT I HAVE SURVEYED, SUBDIVIDED AND PLATTED THE ABOVE TRACT DESIGNATED AS "THE VILLAGES AT SEVEN OAKS SOUTH" A SUBDIVISION IN THE CITY OF BROKEN ARROW, TULSA COUNTY, STATE OF OKLAHOMA. THE ABOVE PLAT IS AN ACCURATE REPRESENTATION OF SAID SURVEY AND MEETS THE OKLAHOMA MINIMUM STANDARDS FOR THE PRACTICE OF LAND SURVEYING AS ADOPTED BY THE OKLAHOMA STATE BOARD OF LICENSURE FOR PROFESSIONAL ENGINEERS AND LAND SURVEYORS.

JAY P. BISSELL  
REGISTERED PROFESSIONAL LAND SURVEYOR  
OKLAHOMA NO. 1318

STATE OF OKLAHOMA )  
) SS  
COUNTY OF TULSA )

BEFORE ME, A NOTARY PUBLIC IN AND FOR SAID STATE AND COUNTY, ON THIS \_\_\_\_\_ DAY OF \_\_\_\_\_, 2019, PERSONALLY APPEARED JAY P. BISSELL, TO ME KNOWN TO BE THE IDENTICAL PERSON WHO SUBSCRIBED HIS NAME TO THE FOREGOING INSTRUMENT, AND ACKNOWLEDGED TO ME THAT HE EXECUTED THE SAME AS HIS FREE AND VOLUNTARY ACT AND DEED, FOR THE USES AND PURPOSE THEREIN SET FORTH.

NOTARY PUBLIC  
MY COMMISSION EXPIRES: NOVEMBER 20, 2019  
COMMISSION NUMBER: 11010522  
MY COMMISSION EXPIRES:  
COMMISSION NUMBER:





CONCEPTUAL IMPROVEMENTS

# The Villages at Seven Oaks South

PUD \_\_\_\_

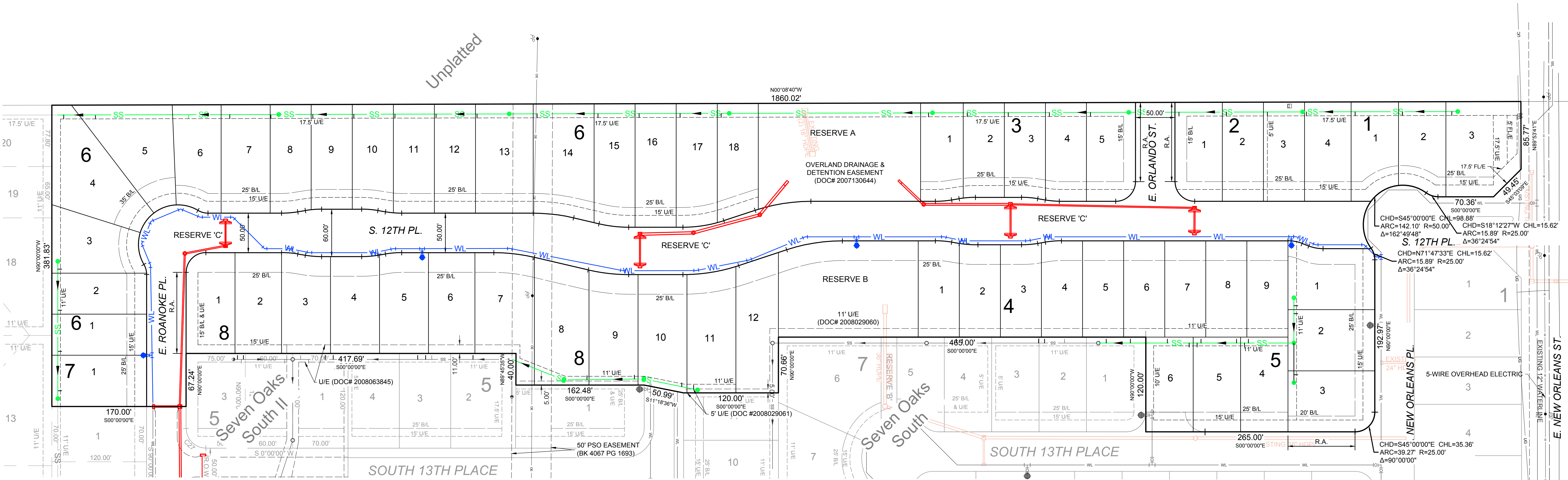
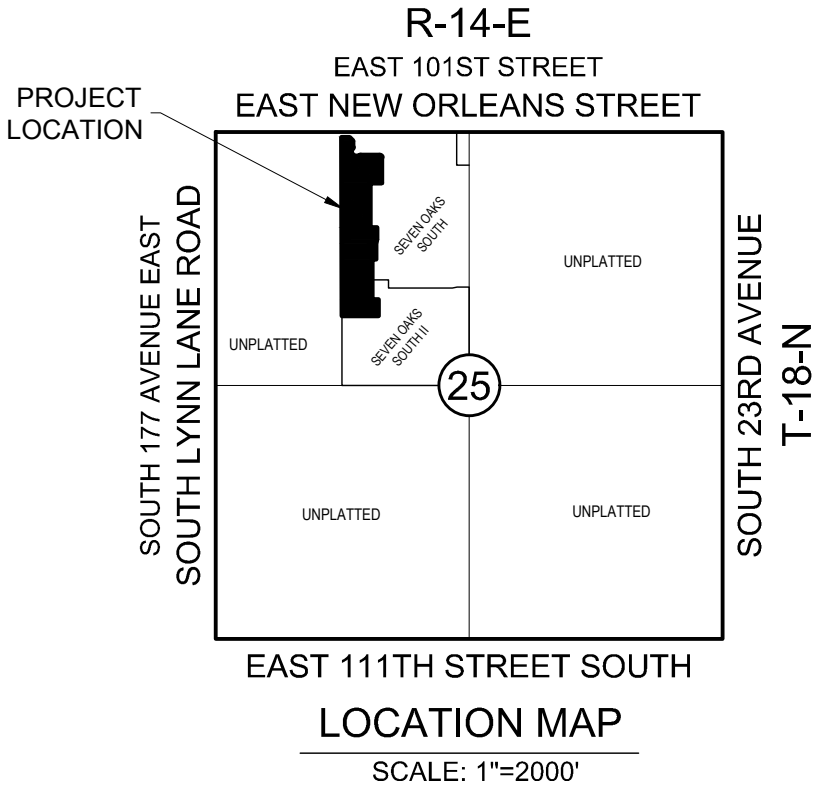
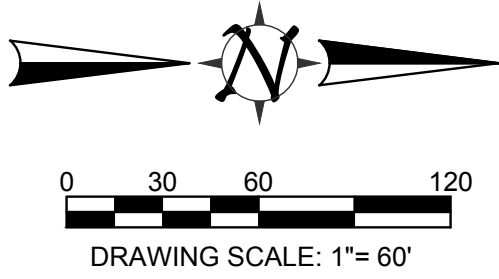
A SUBDIVISION IN THE CITY OF BROKEN ARROW, TULSA COUNTY, OKLAHOMA BEING A PART OF THE E/2 NW/4 OF SECTION TWENTY-FIVE (25), TOWNSHIP 18 NORTH, RANGE 14 EAST, OF THE INDIAN BASE AND MERIDIAN.

**OWNER/DEVELOPER**

SEVEN OAKS SOUTH, LLC  
1420 WEST KENOSHA  
BROKEN ARROW, OK 74012  
PHONE: 918-261-5200  
ATTN: CHUCK RAMSAY

**ENGINEER/SURVEYOR**

AAB ENGINEERING LLC  
CERTIFICATE OF AUTHORIZATION NO. 6318, EXP. JUNE, 30, 2020  
PO BOX 2136  
SAND SPRINGS, OK 74063  
PHONE: 918.514.4283  
FAX: 918.514.4288  
EMAIL: ALAN @ AABENG.COM



**CONTACTS**

MUNICIPAL AUTHORITY  
CITY OF BROKEN ARROW  
210 SOUTH 1ST STREET  
BROKEN ARROW, OK 74012

**UTILITY CONTACTS**

OKLAHOMA NATURAL  
GAS COMPANY  
5848 EAST 16TH STREET  
TULSA, OK 74112  
PHONE: 918.831.8293

WINDSTREAM TELECOM COMPANY  
2300 EAST 1ST PLACE  
BROKEN ARROW, OK 74012  
PHONE: 918.451.3427

AEP / PSO  
212 EAST 6TH STREET  
TULSA, OK 74119  
PHONE: 918.599.2351

COX COMMUNICATIONS  
11811 EAST 51ST STREET  
TULSA, OK 74145  
PHONE: 918.286.4658

**LEGEND**

B/L.....	BUILDING LINE
LNA.....	LIMITS OF NO ACCESS
R.A.....	RESTRICTED ACCESS
U/E.....	UTILITY EASEMENT
F/E.....	FENCE EASEMENT
.....	PROPOSED WATER LINE
SS.....	PROPOSED SANITARY SEWER LINE
SS.....	EXISTING SANITARY SEWER LINE
.....	PROPOSED STORM SEWER LINE
.....	EXISTING STORM SEWER LINE

THE VILLAGES AT SEVEN OAKS SOUTH

Case No. \_\_\_\_\_  
Development No. ###-###  
Sheet 1 of 1

PLOT DATE: 11/14/2019 FILE: P:\181425-VILLAGES AT SEVEN OAKS SOUTH\SEVEN OAKS SOUTH VILLAGES

