

**EXHIBIT 'A'**  
**PARTIAL CLOSURE OF DOC. 04122390**  
**PART OF GOVERNMENT LOT 3**  
**SEC. 2-T18N-R14E**  
**CITY OF BROKEN ARROW, TULSA COUNTY, OKLAHOMA**

**DOCUMENT NUMBER:**

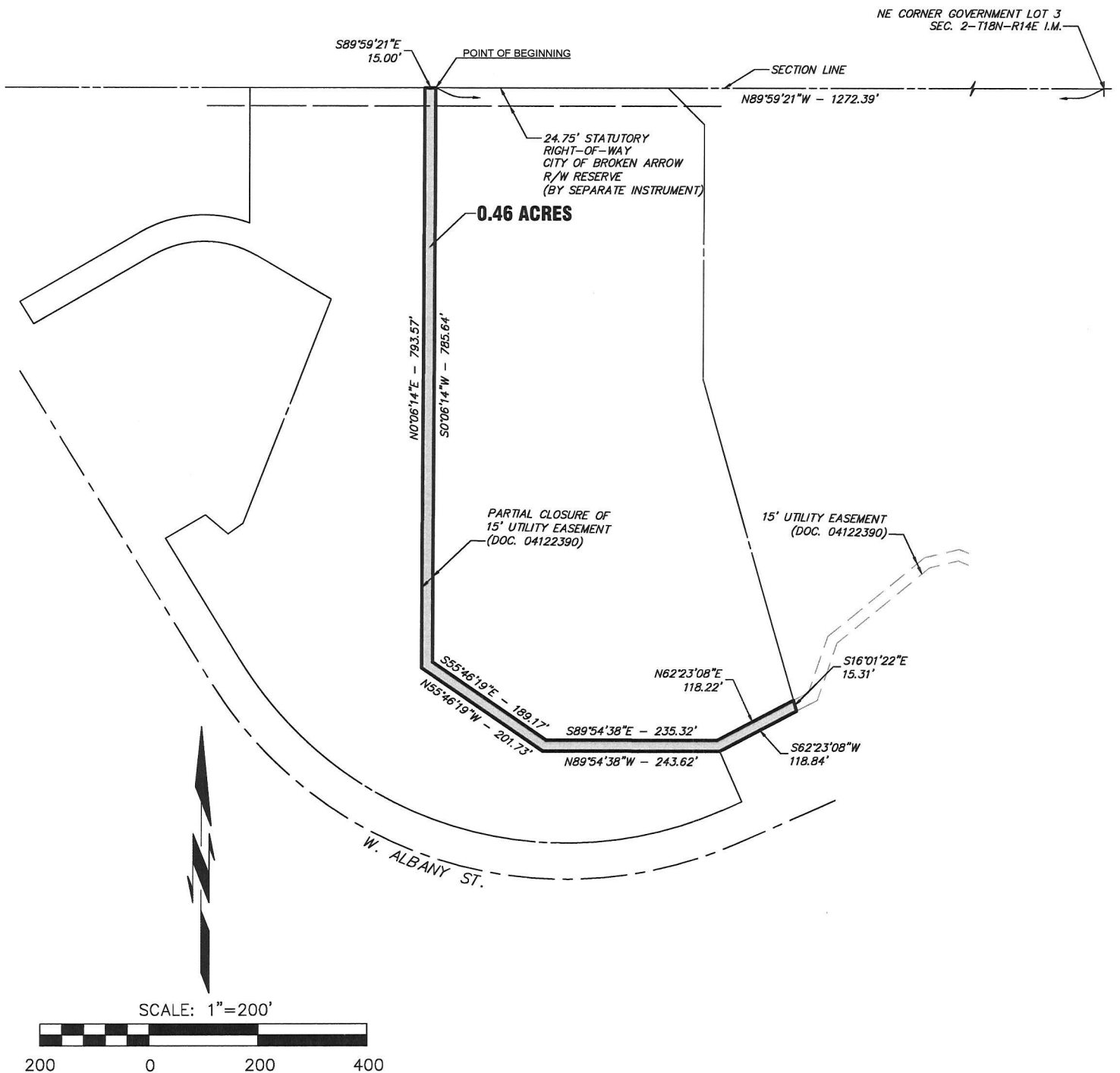
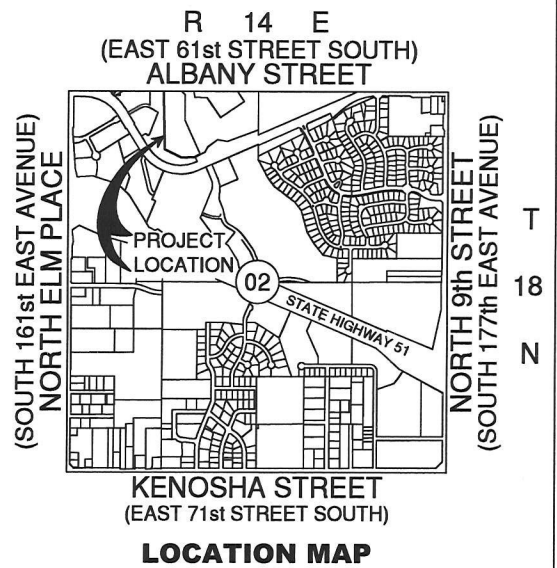
04122390

**EASEMENT OWNER:**

CITY OF BROKEN ARROW

**STATEMENT OF BEARINGS:**

RECORD BEARING ALONG THE NORTH LINE OF GOVERNMENT LOT 3 OF SEC. 2-T18N-R14E (N89°59'21"W) BASED ON A UTILITY EASEMENT RECORDED AS DOCUMENT NUMBER 04122390 AND FILED WITH THE TULSA COUNTY CLERK'S OFFICE ON OCTOBER 08, 2004.



**(SEE SHEET 2 OF 2 FOR LEGAL DESCRIPTION)**

THIS EXHIBIT IS NOT A LAND OR BOUNDARY SURVEY PLAT



EASEMENT CLOSURE EXHIBIT	DATE - SEPTEMBER 21, 2016
DRAWING - EXHIBIT A (SHEET 1 OF 2)	DRAWN BY - JWS
REV - OCTOBER 27, 2016	SCALE - 1" = 200'
	CHECKED BY - JWS

**EXHIBIT 'A'**  
**PARTIAL CLOSURE OF DOC. 04122390**  
**PART OF GOVERNMENT LOT 3**  
**SEC. 2-T18N-R14E**  
**CITY OF BROKEN ARROW, TULSA COUNTY, OKLAHOMA**

LEGAL DESCRIPTION

A TRACT OF LAND LYING IN GOVERNMENT LOT 3 OF SECTION 2, TOWNSHIP 18 NORTH, RANGE 14 EAST OF THE INDIAN MERIDIAN, TULSA COUNTY, OKLAHOMA AND FURTHER DESCRIBED AS:

COMMENCING AT THE NORTHEAST CORNER OF SAID GOVERNMENT LOT 3;

THENCE N89°59'21"W ALONG THE NORTH LINE OF SAID GOVERNMENT LOT 3 FOR A DISTANCE OF 1272.39 FEET TO THE POINT OF BEGINNING;

THENCE S00°06'14"W FOR A DISTANCE OF 785.64 FEET;

THENCE S55°46'19"E FOR A DISTANCE OF 189.17 FEET;

THENCE S89°54'38"E FOR A DISTANCE OF 235.32 FEET;

THENCE N62°23'08"E FOR A DISTANCE OF 118.22 FEET;

THENCE S16°01'22"E FOR A DISTANCE OF 15.31 FEET;

THENCE S62°23'08"W FOR A DISTANCE OF 118.84 FEET;

THENCE N89°54'38"W FOR A DISTANCE OF 243.62 FEET;

THENCE N55°46'19"W FOR A DISTANCE OF 201.73 FEET;

THENCE N00°06'14"E FOR A DISTANCE OF 793.57 FEET TO THE NORTH LINE OF SAID GOVERNMENT LOT 3;

THENCE S89°59'21"E ALONG SAID NORTH LINE FOR A DISTANCE OF 15.00 FEET TO THE POINT OF BEGINNING.

THE ABOVE DESCRIPTION CONTAINING 0.46 ACRES MORE OR LESS.

BEARINGS ARE BASED ON A RECORD BEARING ALONG THE NORTH LINE OF GOVERNMENT LOT 3 OF SEC. 2-T18N-R14E (N89°59'21"W) BASED ON A UTILITY EASEMENT RECORDED AS DOCUMENT NUMBER 04122390 AND FILED WITH THE TULSA COUNTY CLERK'S OFFICE ON OCTOBER 08, 2004.

THIS DESCRIPTION WAS PREPARED FROM THE PUBLIC RECORD ON SEPTEMBER 21, 2016 AND REVISED OCTOBER 27, 2016 BY JUSTIN SMITH, PLS 1868, COWAN GROUP ENGINEERING, LLC. CERTIFICATE OF AUTHORIZATION CA 6414, EXPIRES ON JUNE 30, 2018.



\_\_\_\_\_  
 JUSTIN SMITH, PLS 1868                      DATE

THIS EXHIBIT IS NOT A LAND OR BOUNDARY SURVEY PLAT



EASEMENT CLOSURE EXHIBIT	DATE – SEPTEMBER 21, 2016
DRAWING – EXHIBIT A (SHEET 2 OF 2)	DRAWN BY – JWS
REV – OCTOBER 27, 2016	SCALE – 1" = 200'
	CHECKED BY – JWS

EASEMENT CLOSURE TRAVERSE CALC-102716.txt  
Checking Bearing-Distance Traverses at 9:06 on 27 Oct 2016

MapTrav file S:\Survey\Raw Files\14-256 Broken Arrow-Stoney Creek Hotel\FIELD  
DATA\TRAVERSE CALCULATIONS\EASEMENT CLOSURE-102716.mt

1) Map Traverse Results "ESMT CLOSURE" [1 - 1]  
Leg Count 10  
Total Distance 2716.420

Coordinate Misclosure  
N 0.002 Dist 0.007  
E 0.006 Brng N69°18'37"E  
Relative precision 1 : 409933

Bearing	Distance	Start or To Point	Curve Code
		1	
S 0°06'14"W	785.640	2	
S55°46'19"E	189.170	3	
S89°54'38"E	235.320	4	
N62°23'08"E	118.220	5	
S16°01'22"E	15.310	6	
S62°23'08"W	118.840	7	
N89°54'38"W	243.620	8	
N55°46'19"W	201.730	9	
N 0°06'14"E	793.570	10	
S89°59'21"E	15.000	1	

Area 20138.8 (sq. units)  
0.46 (acres)

Justin Smith, PLS

Cowan Group Engineering, LLC  
5416 South Yale, suite 210  
Tulsa, OK 74135

CA 6414 exp. 06/30/2018

