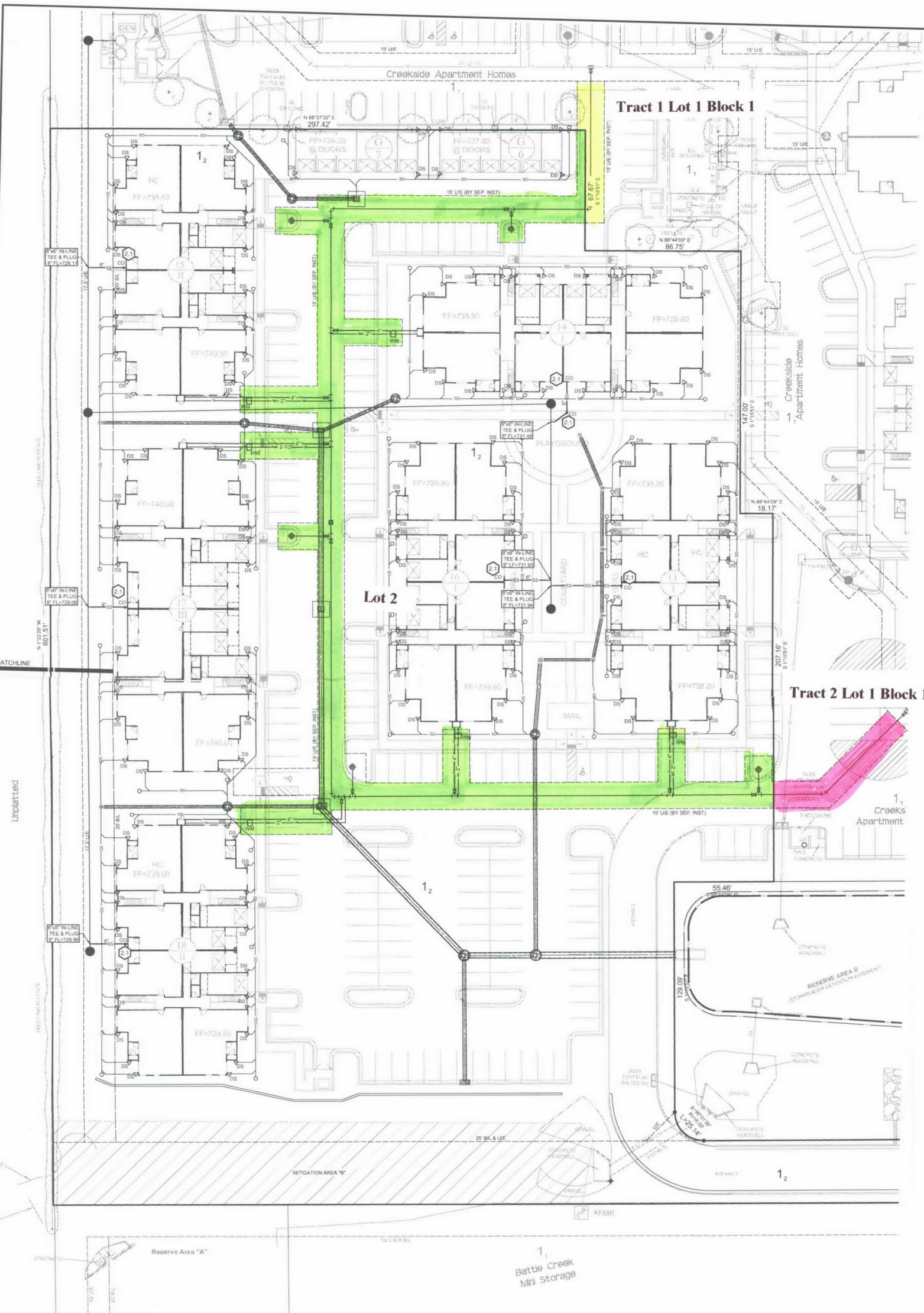




- Legend**
- EXISTING SANITARY
  - EXISTING WATER LINE
  - PROPOSED SANITARY SEWER SERVICE LINE
  - PROPOSED WATER SERVICE LINE (SEE NOTE #2)
  - PROPOSED FIRE LINE
  - CLEAN OUT
  - WATER METER
  - DOWNSPOUT CONNECTIONS

- Notes**
1. SEE SHEETS C18 & C17 FOR DOWNSPOUT LOCATION & PIPE SIZE
  2. FOR EACH 2" AND 3-1/2" SERVICE LINE, RUN THE LINE UNDER A GREEN AREA AND INSTALL 2" AND 3-1/2" BALL VALVES, WRAP LOCATOR TAPE AROUND THE VALVE, AND BRING THE TAPE TO THE SURFACE AND MAKE A VALVE LOCATION MARKER ON THE ADJACENT CURB.



STORMWATER DETENTION ACCOMMODATIONS FOR THIS SITE ARE PROVIDED IN ACCORDANCE WITH DETENTION DETERMINATION NUMBER: DD-032514-12.

NO.	DATE	DESCRIPTION

**CITY OF BROKEN ARROW**  
Where opportunity lives

ALL CONSTRUCTION TO BE IN STRICT ACCORDANCE WITH CURRENT CITY OF BROKEN ARROW PUBLIC WORKS DEPARTMENT SPECIFICATIONS, INCLUDING O.D.D.T. 2008 EDITION SPECIFICATIONS

**SWA** **Stamore Welz & Associates, Inc.**  
88 EAST 30th PLACE  
TULSA, OKLAHOMA 74106  
PHONE: (918) 482-1800  
FAX: (918) 482-8888  
WWW: SWA.COM

**Creekside Apt. Homes-Ph II**  
Utility Plan (S/2)  
(LOTS 1 & 2, BLOCK 1)  
DETENTION DETERMINATION NUMBER: DD-032514-12

SCALE	DESIGN	DATE	DRAFTED	DATE
PLAN: 1"=20'	DTW	5/26/17	LAD	5/26/17
HORZ: N/A	REVIEWED	DATE	APPROVED	DATE
VERT: N/A				
DRAWING NAME	SHEET	C14	WORK ORDER NO.	
7141-30UT-PLWG	OF	19	17141.30	