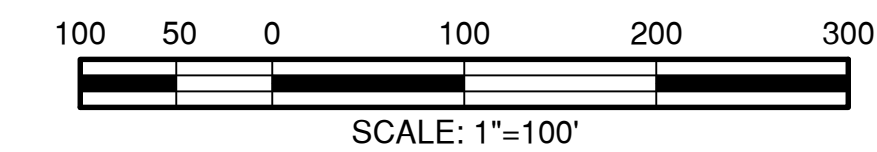


Spring Hill at Forest Ridge

A subdivision in the City of Broken Arrow, being a part of the
 N/2 of Section 11, Township 18 North, Range 15 East,
 Wagoner County, State of Oklahoma



OWNER / DEVELOPER

The Robson Companies, Inc.,
 an Oklahoma corporation
 901 North Forest Ridge Boulevard
 Broken Arrow, Oklahoma 74014
 918.357.2787

ENGINEER / SURVEYOR

Tulsa Engineering & Planning Associates, Inc.
 an Oklahoma corporation
 9820 East 41st Street, Suite 102
 Tulsa, Oklahoma 74146
 918.252.9621

CERTIFICATE OF AUTHORIZATION No. 531
 RENEWAL DATE: JUNE 30, 2017

Lot Addresses

Addresses shown on this plat were accurate at the time this plat was filed. Addresses are subject to change and should never be relied upon in place of the legal description.

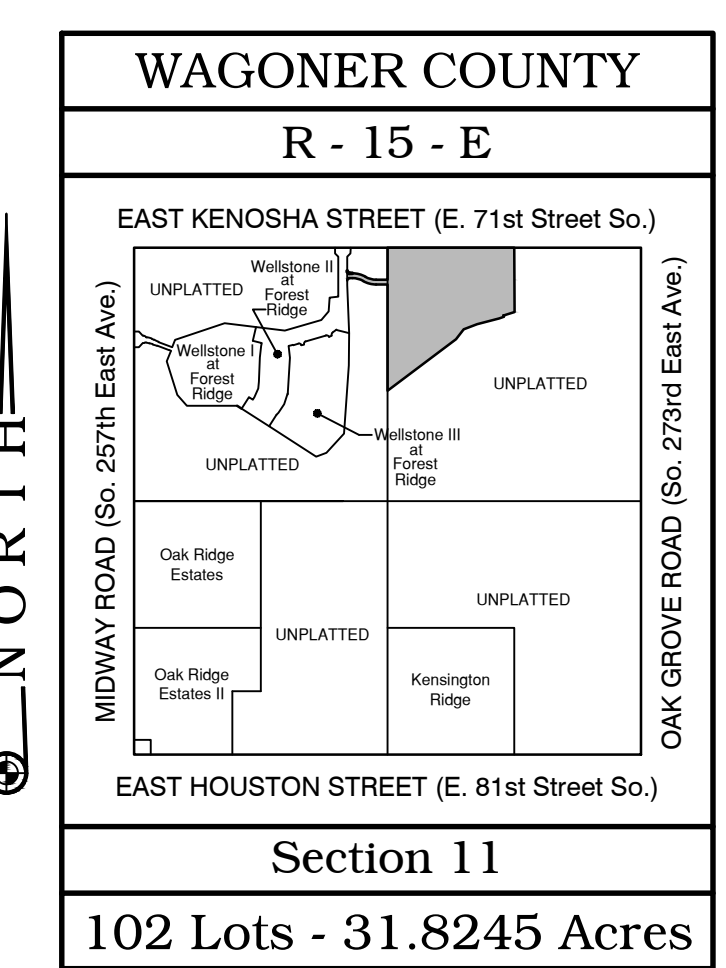
Block	Lot	Address	Block	Lot	Address	Block	Lot	Address
BLOCK 1	1	0	BLOCK 4	1	0	BLOCK 6	1	0
	2	0		2	0		2	0
	3	0		3	0		3	0
	4	0		4	0		4	0
	5	0		5	0		5	0
	6	0		6	0		6	0
	7	0		7	0		7	0
	8	0		8	0		8	0
	9	0		9	0		9	0
	10	0		10	0		10	0
	11	0		11	0		11	0
	12	0		12	0		12	0
	13	0		13	0		13	0
	14	0		14	0		14	0
BLOCK 2	1	0	BLOCK 5	1	0	BLOCK 7	1	0
	2	0		2	0		2	0
	3	0		3	0		3	0
	4	0		4	0		4	0
	5	0		5	0		5	0
	6	0		6	0		6	0
	7	0		7	0		7	0
	8	0		8	0		8	0
	9	0		9	0		9	0
	10	0		10	0		10	0
BLOCK 3	1	0	BLOCK 6	1	0	BLOCK 8	1	0
	2	0		2	0		2	0
	3	0		3	0		3	0
	4	0		4	0		4	0
	5	0		5	0		5	0
	6	0		6	0		6	0
	7	0		7	0		7	0
	8	0		8	0		8	0
	9	0		9	0		9	0
	10	0		10	0		10	0

Backflow Preventer Valve Table

BLOCKS	LOTS	PROPOSED FINISHED FLOOR ELEVATION	TOP OF MANHOLE ELEVATION	TOP OF RIM ELEVATION	BLOCKS	LOTS	PROPOSED FINISHED FLOOR ELEVATION	UPSTREAM FLOOR ELEVATION	TOP OF MANHOLE ELEVATION	TOP OF RIM ELEVATION	BLOCKS	LOTS	PROPOSED FINISHED FLOOR ELEVATION	UPSTREAM FLOOR ELEVATION	TOP OF MANHOLE ELEVATION	TOP OF RIM ELEVATION
BLOCK 1	1	0	0	0	BLOCK 4	1	0	0	0	BLOCK 6	1	0	0	0		
	2	0	0	0		2	0	0	0		2	0	0	0	0	
	3	0	0	0		3	0	0	0		3	0	0	0	0	
	4	0	0	0		4	0	0	0		4	0	0	0	0	
	5	0	0	0		5	0	0	0		5	0	0	0	0	
	6	0	0	0		6	0	0	0		6	0	0	0	0	
	7	0	0	0		7	0	0	0		7	0	0	0	0	
	8	0	0	0		8	0	0	0		8	0	0	0	0	
	9	0	0	0		9	0	0	0		9	0	0	0	0	
	10	0	0	0		10	0	0	0		10	0	0	0	0	
	11	0	0	0		11	0	0	0		11	0	0	0	0	
	12	0	0	0		12	0	0	0		12	0	0	0	0	
	13	0	0	0		13	0	0	0		13	0	0	0	0	
	14	0	0	0		14	0	0	0		14	0	0	0	0	
BLOCK 2	1	0	0	0	BLOCK 5	1	0	0	0	BLOCK 7	1	0	0	0		
	2	0	0	0		2	0	0	0		2	0	0	0	0	
	3	0	0	0		3	0	0	0		3	0	0	0	0	
	4	0	0	0		4	0	0	0		4	0	0	0	0	
	5	0	0	0		5	0	0	0		5	0	0	0	0	
	6	0	0	0		6	0	0	0		6	0	0	0	0	
	7	0	0	0		7	0	0	0		7	0	0	0	0	
	8	0	0	0		8	0	0	0		8	0	0	0	0	
	9	0	0	0		9	0	0	0		9	0	0	0	0	
	10	0	0	0		10	0	0	0		10	0	0	0	0	
BLOCK 3	1	0	0	0	BLOCK 6	1	0	0	0	BLOCK 8	1	0	0	0		
	2	0	0	0		2	0	0	0		2	0	0	0	0	
	3	0	0	0		3	0	0	0		3	0	0	0	0	
	4	0	0	0		4	0	0	0		4	0	0	0	0	
	5	0	0	0		5	0	0	0		5	0	0	0	0	
	6	0	0	0		6	0	0	0		6	0	0	0	0	
	7	0	0	0		7	0	0	0		7	0	0	0	0	
	8	0	0	0		8	0	0	0		8	0	0	0	0	
	9	0	0	0		9	0	0	0		9	0	0	0	0	
	10	0	0	0		10	0	0	0		10	0	0	0	0	

If the actual finish floor elevation is lower than one (1) foot above the top of rim elevation of the upstream manhole, it shall be the builder's responsibility to install a Backflow Preventer Valve near the building according to Broken Arrow Ordinance No. 2173, Section 24-100, Adopted October 5, 1998.

• These lots require a backflow preventer valve.



Section 11
 102 Lots - 31.8245 Acres

Legend

- = ROW Dedicated by this plat
- = Building Line
- = Utility Easement
- = D.A.L. = Driveway Access Limitation
- = T.C.M. = Traffic Control Median
- = Gas Line

Monument Notes

- A 5/8" x 1/8" deformed bar with a yellow plastic cap stamped "RLS 1253" to be set at all plat boundary corners, prior to recordation unless noted otherwise.
- A 5/8" x 1/8" deformed bar with a yellow plastic cap stamped "RLS 1253" has been set at each corner along the boundary common with "Wellstone II at Forest Ridge".
- A 3/8" x 1/8" deformed bar with a yellow plastic cap stamped "CA 531" to be set at all lot corners after completion of improvements, unless noted otherwise.
- A 3/8" x 1/8" deformed bar with a yellow plastic cap stamped "CA 531" to be set at all street centerline intersections, points of curve, points of tangent, points of compound curve, points of reverse curve, center of cul-de-sacs and center of eyebrows, after completion of improvements, unless noted otherwise.

Basis of Bearings

The non-astronomic bearings for said tract are based on a platted bearing of S 89°40'26"E along the north line of the NW/4 of Section 11, T-18-N, R-15-E of the Indian Meridian, Wagoner County, State of Oklahoma, according to the Official U.S. Government Survey thereof.

Benchmark

Top of a 1 1/4" Iron Pin at the intersection of East Kenosha Street and North Midway Road (Section Corner)
 Elevation = 628.09 NGVD 1929

Notes

1. Water to be supplied by the City of Broken Arrow.
2. Sewage to be received by the City of Broken Arrow.
3. No vehicular access is allowed along street frontages with Driveway Access Limitations and where the setback for the garage is less than 25 feet.

Stormwater Detention

Stormwater detention accommodations for this plat are provided in accordance with Fee-In-Lieu of Detention Determination No. DD-081816-12. Stormwater detention for this plat will be provided adjacent to the site.

