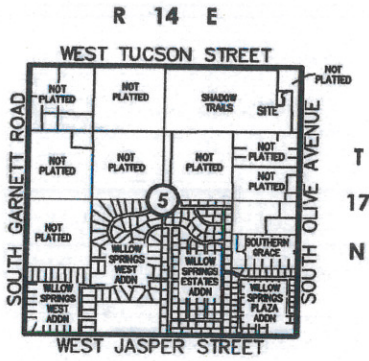


# Exhibit "A.2"

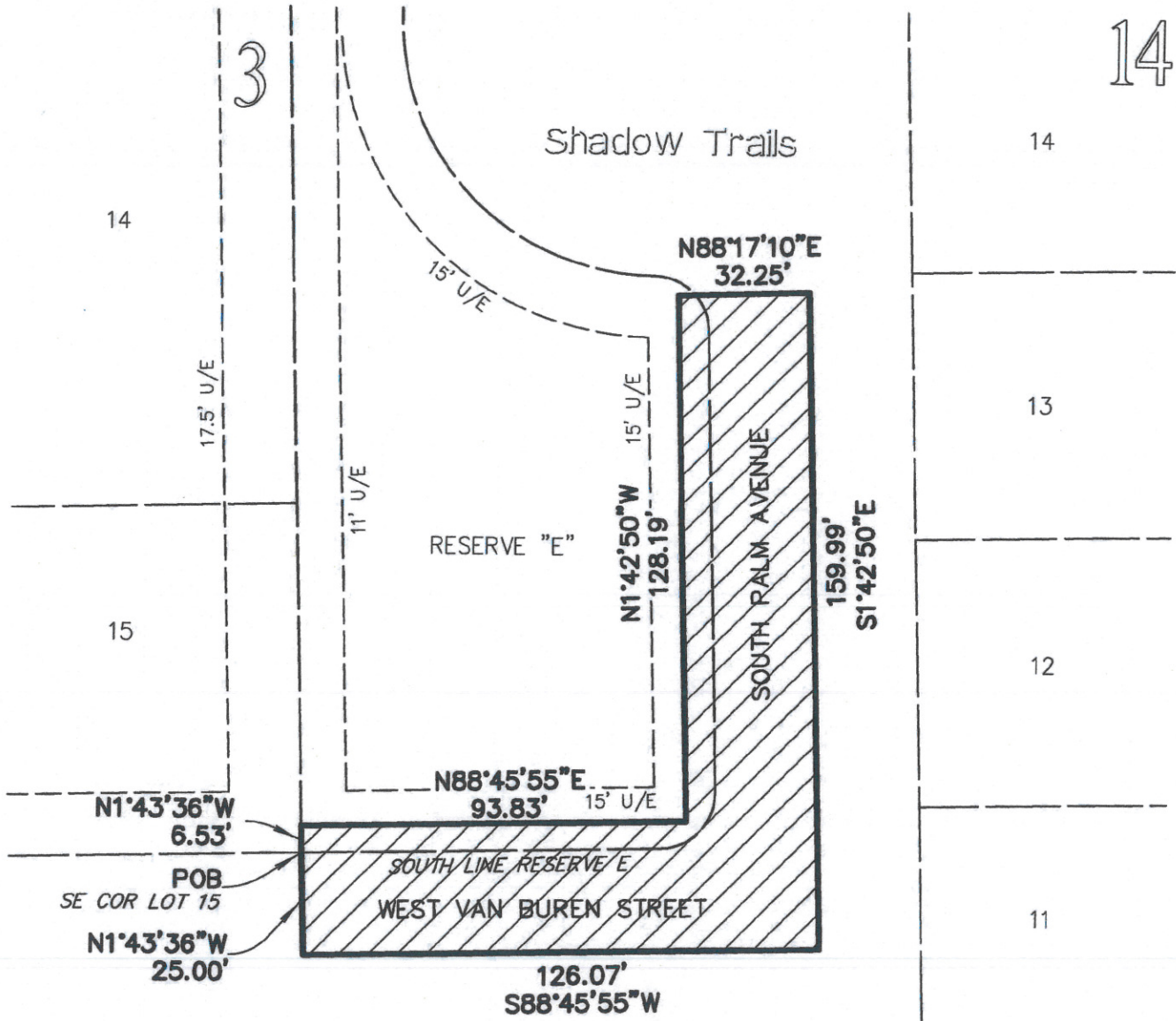
## Shadow Trails Clubhouse License Agreement Exhibit



NORTH  
NOT TO SCALE



Location Map



**LEGEND**

- POB POINT OF BEGINNING
- U/E UTILITY EASEMENT (PLATTED)

# Traverse Closure

Crandall's Method

Project: 17034Ex License Agreement

Leg#	Bearing	Quadrant	Distance	Northing	Easting	New Length	Adjusted Northing	Adjusted Easting
Starting Coordinates:				5,000.0000	5,000.0000			
1	1. 43 36	NW	6.53	5,006.5270	4,999.8032	6.530	5,000.0000 0000	5,000.0000 0000
2	88. 45 55	NE	93.83	5,008.5489	5,093.6095	93.828	5,008.5270 4207	4,999.8032 4137
3	1. 42 50	NW	128.19	5,136.6815	5,089.7755	128.190	5,008.5488 7521	5,093.6094 1951
4	88. 17 10	NE	32.25	5,137.6461	5,122.0111	32.250	5,136.6816 6653	5,089.7754 3919
5	1. 42 50	SE	159.99	4,977.7276	5,126.7961	159.990	5,137.6462 1669	5,122.0109 9980
6	88. 45 55	SW	126.07	4,975.0110	5,000.7534	126.072	4,977.7279 6272	5,126.7960 6248
End	1. 43 36	NW	25.00	4,999.9997	5,000.0001	25.000	4,975.0113 2438	5,000.7532 8724
7	Ending Coordinates:			4,999.9997	5,000.0001		5,000.0000 0000	5,000.0000 0000

<b>Total Traverse Length:</b>	<b>17. 12 08</b>	<b>SE</b>	<b>571.86</b>	<b>Closure Precision</b>
<b>Closure:</b>	<b>17. 12 08</b>	<b>SE</b>	<b>0.000</b>	<b>Perfect</b>
<b>Closure Area:</b>			<b>8,113.500 SF</b>	<b>0.186 Acres</b>

The information shown on this sheet is confidential and intended for the use of Tanner Consulting personnel only. This sheet may not be edited, duplicated or filed of record in any form without the express written permission of Tanner Consulting.