

51 Aspen Mini-Storage

Dana Patten, County Treasurer

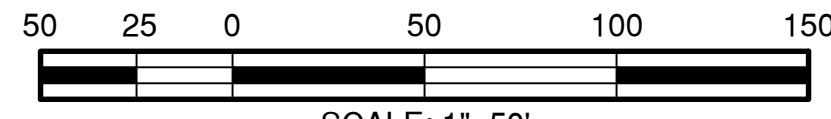
A subdivision in the City of Broken Arrow, being a part of the NE/4 of Section 20, Township 18 North, Range 15 East, Wagoner County, State of Oklahoma

ENGINEER / SURVEYOR

Tulsa Engineering & Planning Associates, Inc.

an Oklahoma corporation
9820 East 41st Street, Suite 102
Tulsa, Oklahoma 74146
918.252.9621

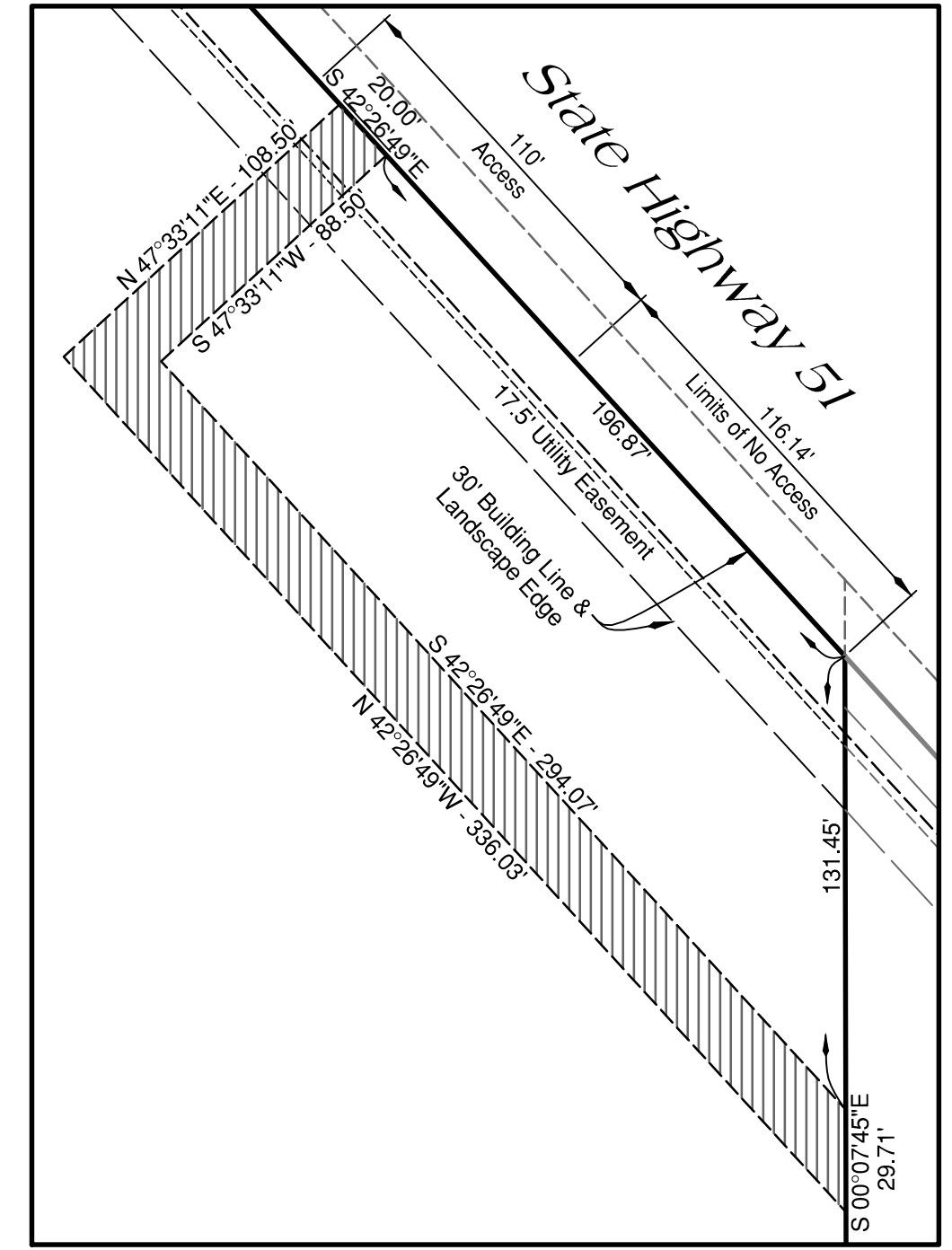
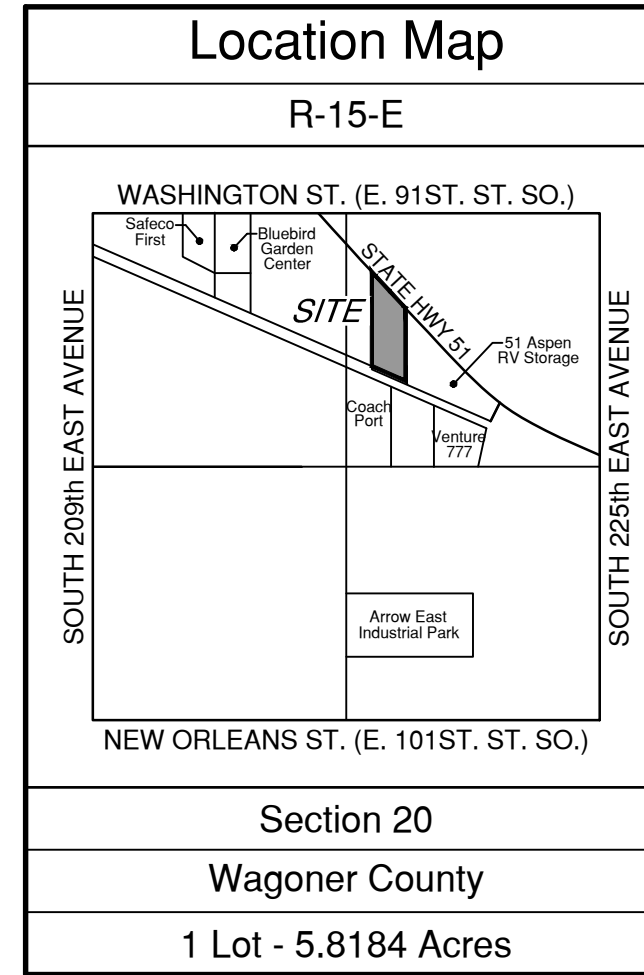
CERTIFICATE OF AUTHORIZATION NO. 531
RENEWAL DATE: JUNE 30, 2017



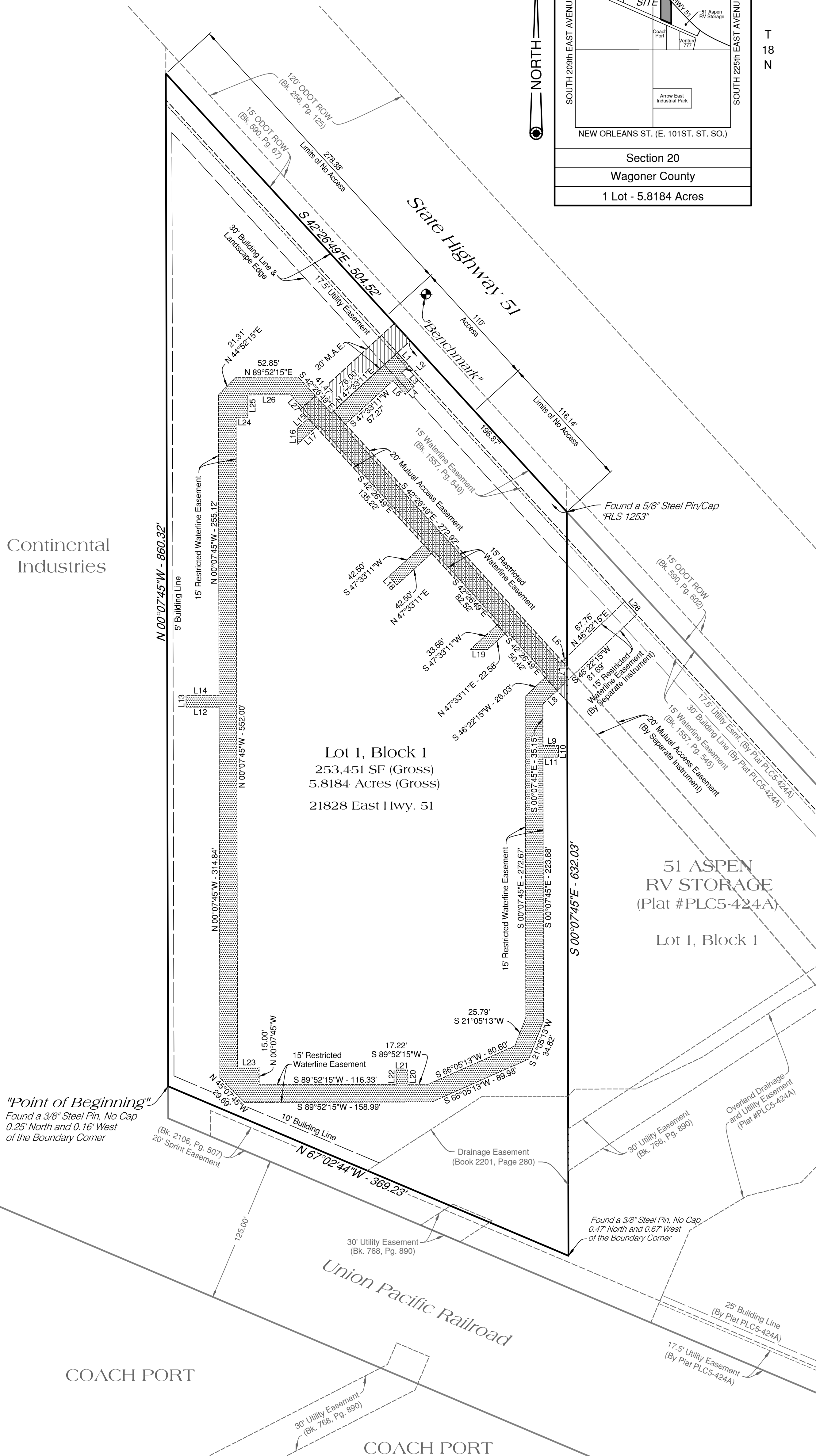
OWNER / DEVELOPER

Aspen Square, Inc.

an Oklahoma corporation
P. O. Box 1861
Muskogee, OK 74402-1861
918.687.0002



DETAIL 'A': 20' Mutual Access Easement
Scale: 1" = 50'



Legend

Bk. = Book Pg. = Page
MAE = Mutual Access Easement

Monument Notes

A 5/8" x 18" deformed bar with a yellow plastic cap stamped "RLS 1253" to be set at all plat boundary corners, prior to recordation unless noted otherwise.

Basis of Bearings

The non-astronomic bearings for said tract are based on an assumed bearing of S 00°07'45" E along the West line of "51 Aspen RV Storage", a subdivision in the City of Broken Arrow, Wagoner County, State of Oklahoma, according to the official recorded plat thereof, Plat No. PLC5-424A, as filed in the records of the Wagoner County Clerk's office.

Benchmark

Top of a 3/8" Steel Pin with a yellow plastic cap Stamped "TEPA CTR. PT." 217' northwesterly along the northerly line of Lot 1, Block 1, from the northeast corner of Lot 1, Block 1, then northeasterly 37' to Benchmark. Benchmark is 1.2' southwestly from the southwestly edge of pavement for State Highway 51.

Elevation = 717.09 NAVD 1988

Stormwater Detention

Stormwater detention accommodations for this plat are provided in accordance with Fee-In-Lieu of Detention Determination No. DD-53116-09. Stormwater detention for this plat will be provided on and adjacent to the site.

Lot Address

The address shown on this plat was accurate at the time this plat was filed. Addresses are subject to change and should never be relied upon in place of the legal description.

Backflow Preventer Valve Table

If the actual finished floor elevation is lower than one (1) foot above the top of rim elevation of the upstream manhole, it shall be the builder's responsibility to install a backflow preventer valve near the building according to Broken Arrow Ordinance No. 2173, Section 24-100, adopted October 5, 1998.

Line Table

NUMBER	BEARING	DISTANCE	NUMBER	BEARING	DISTANCE
L1	S 42°26'49"E	15.00'	L15	S 47°33'11"W	14.96'
L2	S 47°33'11"W	8.73'	L16	S 00°07'45"E	13.52'
L3	S 42°26'49"E	15.72'	L17	N 47°33'11"E	24.06'
L4	S 47°33'11"W	10.00'	L18	S 42°26'49"E	10.00'
L5	N 42°26'49"W	15.72'	L19	N 89°52'15"E	14.85'
L6	N 46°22'15"E	8.25'	L20	N 00°07'45"W	12.22'
L7	S 00°07'45"E	20.68'	L21	S 89°52'15"W	10.00'
L8	S 46°22'15"W	28.61'	L22	S 00°07'45"E	12.22'
L9	N 89°52'15"E	13.16'	L23	S 89°52'15"W	18.28'
L10	S 00°07'45"E	10.00'	L24	N 89°52'15"E	10.00'
L11	S 89°52'15"W	13.16'	L25	N 00°07'45"W	19.02'
L12	S 89°52'15"W	28.03'	L26	N 89°52'15"E	36.29'
L13	N 00°07'45"W	10.00'	L27	S 42°26'49"E	24.91'
L14	N 89°52'15"E	28.03'	L28	S 42°26'49"E	15.00'

APPROVED _____ by the City Council of the City of Broken Arrow, Oklahoma.

Mayor

Attest: City Clerk

51 Aspen Mini-Storage

PT15-118 Sheet 1 of 2

Date of Preparation: July 6, 2016