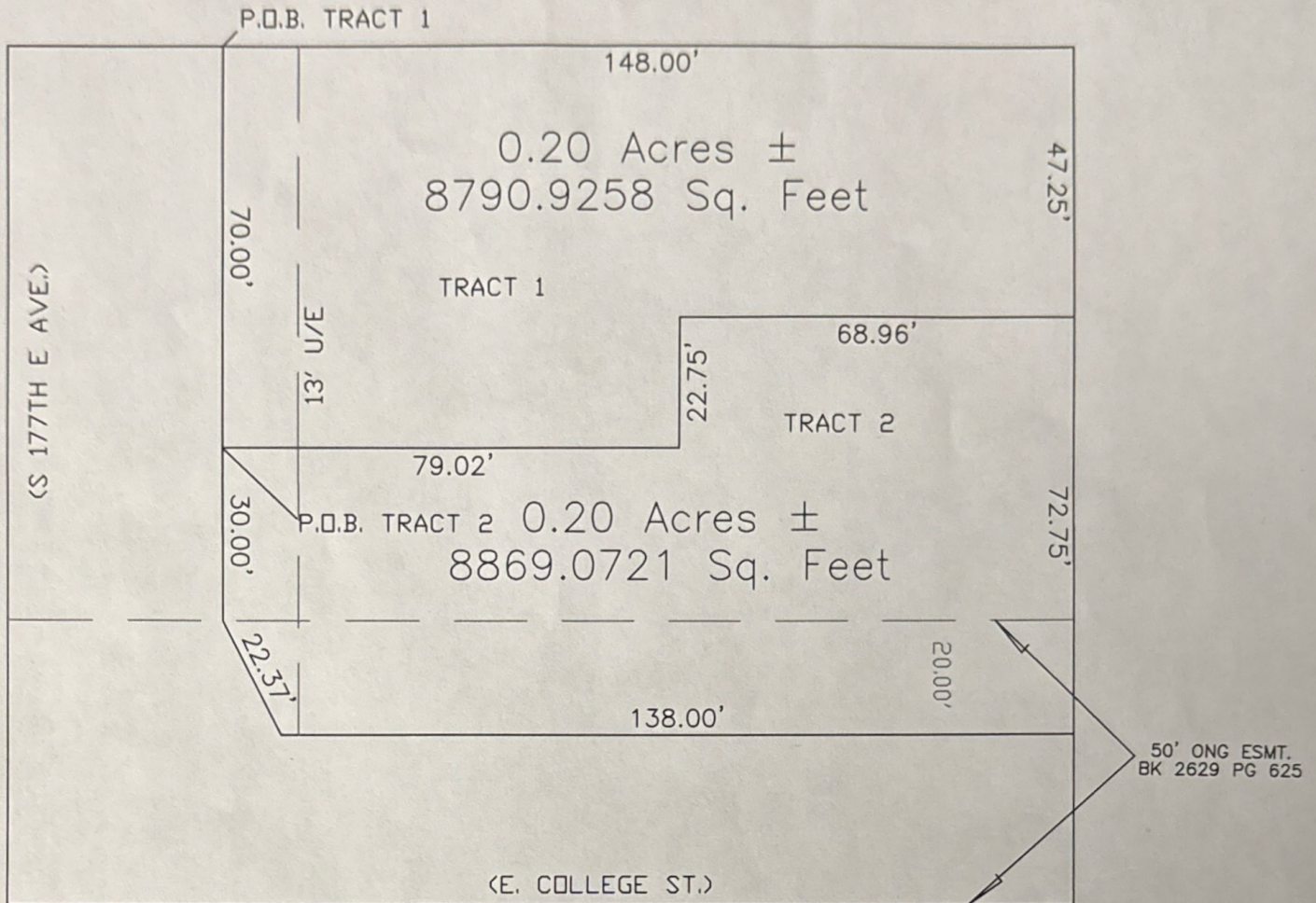
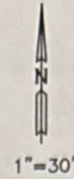


LOT SPLIT



LEGAL DESCRIPTION TRACT 1

A tract of land situated in the W/2 NW/4 of Section 12, T18 N, R14 E of the I B & M, Tulsa County, Oklahoma, described as follows: Commencing at the SW corner of said W/2 NW/4, thence N 01°14'49" W along the West line of said Section a distance of 150.00 feet, thence N 88°46'51" E and parallel with the South line of said W/2 NW/4 a distance of 37.00 feet to the Point of Beginning; thence continuing N 88°46'51" E a distance of 148.00 feet; thence S 01°14'49" E and parallel with said West line a distance of 47.25 feet; thence S 88°46'51" W and parallel with said South line a distance of 68.96 feet; thence S 01°13'09" E a distance of 22.75 feet; thence S 88°46'51" W and parallel with said South line a distance of 79.02 feet; thence N 01°14'49" W and parallel with said West line a distance of 60.00 feet to the Point of Beginning, containing 0.20 acres, more or less...Basis of Bearings: Oklahoma State Plane Coordinate System North Zone NAD 83...Description prepared by Daniel S. Goss, PLS #1316 on November 4, 2024.

LEGAL DESCRIPTION TRACT 2

A tract of land situated in the W/2 NW/4 of Section 12, T18 N, R14 E of the I B & M, Tulsa County, Oklahoma, described as follows: Commencing at the SW corner of said W/2 NW/4, thence N 01°14'49" W along the West line of said Section a distance of 150.00 feet, thence N 88°46'51" E and parallel with the South line of said W/2 NW/4 a distance of 37.00 feet thence S 01°14'49" E and parallel with said West line a distance of 70.00 feet to the Point of Beginning; thence N 88°46'51" E and parallel with the South line of said W/2 NW/4 a distance of 79.02 feet; thence N 01°13'09" W a distance of 22.75 feet; thence N 88°46'51" E and parallel with said South line a distance of 68.96 feet; thence S 01°14'49" E and parallel with said West line a distance of 72.75 feet; thence S 88°46'51" W and parallel with said South line a distance of 138.00 feet; thence N 26°33'34" W a distance of 22.37 feet; thence N 01°14'49" W and parallel with said West line a distance of 30.00 feet to the Point of Beginning, containing 0.20 acres, more or less...Basis of Bearings: Oklahoma State Plane Coordinate System North Zone NAD 83...Description prepared by Daniel S. Goss, PLS #1316 on November 4, 2024.