

# City of Broken Arrow

## Drainage Advisory Committee



## PROJECT REPORT

DATE:	03/18/24
NAME	Patrick Wilson, PE, CFM, Stormwater Division Manager, City of Broken Arrow
ADDRESS / LOCATION	Preserve Park Detention Pond, Broken Arrow
WATERSHED	Adams
ESTIMATE	\$325,000.00
CASE NO.	24-008

### DESCRIPTION

The Preserve Park (37<sup>th</sup> St) Detention Pond is located in Northeast Broken Arrow. The path and the north bank have eroded.

Staff investigated the site and found that the walking path was eroding due to a substantial amount of sheet flow over the path. The flow had also eroded the bank of the pond causing very large gullies to form in the bank. The asphalt path is also eroding and falling into an approximate 3-foot hole. The staff also found that an offsite berm holding water adjacent to the pond has been cut and the flow is eroding the path at that location. On the northwest side of the pond, water builds up and flows over the path and has severely eroded the shore and is starting to erode the asphalt path.

City Staff has designed plans to mitigate and repair these concerns.

The estimated construction cost to install an interceptor ditch, inlets, storm sewer pipes, repair the shore, repair the asphalt path, and other mitigation items is approximately \$325,000.00 in 2024 Dollars.

### BENEFIT

Repair the walking path at a public park and stabilize the path and the shore to allow the path to be used for years to come.

### RECOMMENDATION

Approval of the request for the expenditure of \$325,000 for construction of the designed repairs and mitigation.

**COMPLETED BY:** Patrick P. Wilson

**DATE:** 03/18/24

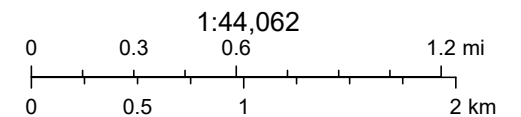




# Stormwater Utility Map



10/17/2023, 3:20:05 PM

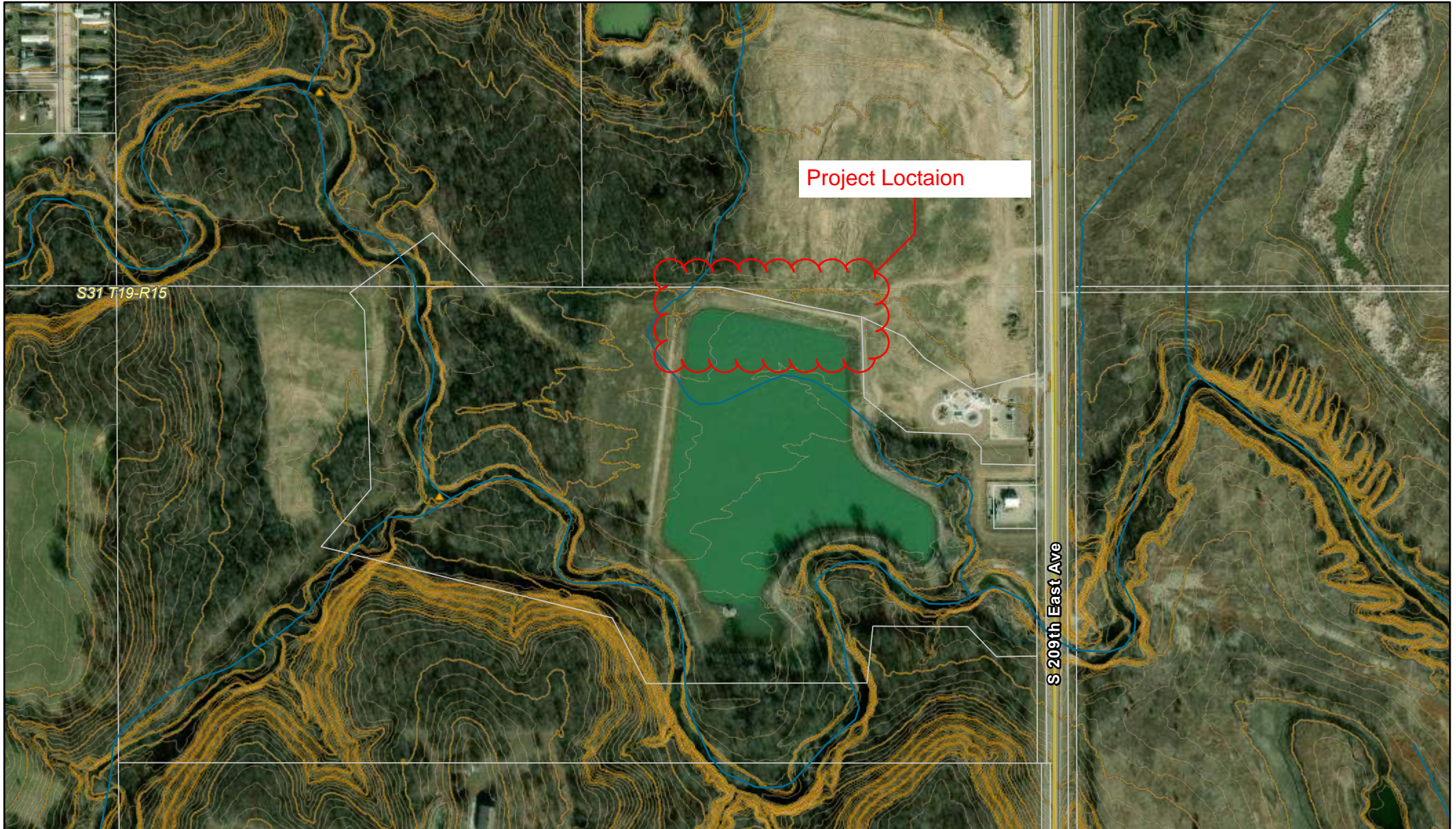


Copyright nearmap 2015, Source: Esri, Maxar, Earthstar Geographics, and the GIS User Community, City of Tulsa, US Census Bureau, INCOG, & unknown, Sources: Esri, HERE, Garmin, FAO, NOAA, USGS, © OpenStreetMap contributors, and the GIS User Community

City of Broken Arrow



# Stormwater Utility Map



10/17/2023, 3:16:12 PM



Parcels



Sections (PLSS)



Blue Line Streams (ODOT)

Address Points

Stormwater Structures (Private)

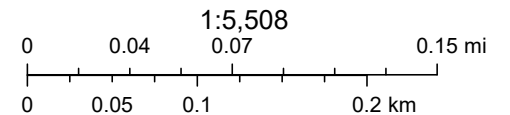


Other

Contours\_2ft

2ft

10ft



Copyright nearmap 2015, Source: Esri, Maxar, Earthstar Geographics, and the GIS User Community, City of Tulsa, US Census Bureau, INCOG, & unknown, Sources: Esri, HERE, Garmin, FAO, NOAA, USGS, © OpenStreetMap contributors, and the GIS User Community

City of Broken Arrow







































