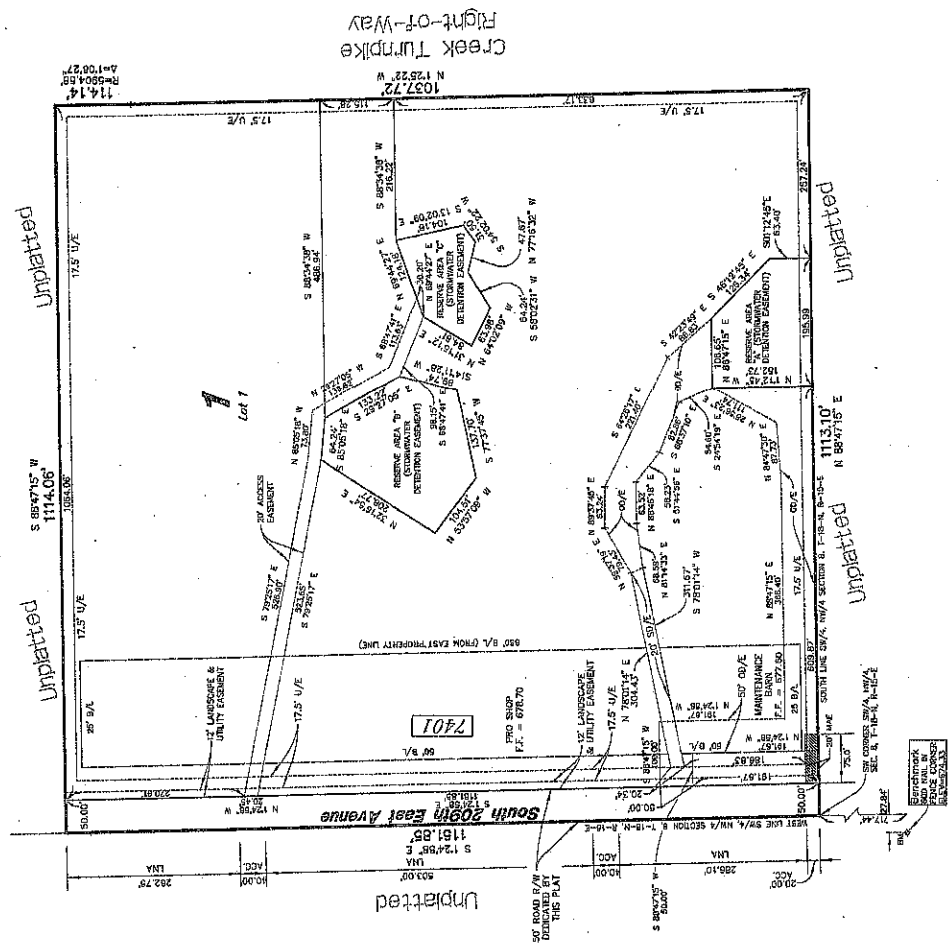
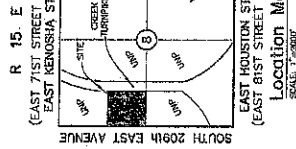


# Tee Town Golf Ranch

PART OF THE SW/4 OF SECTION 5, TOWNSHIP 18 NORTH, RANGE 15 EAST,  
 OF THE INDIAN BASE & MERIDIAN, A SUBDIVISION IN THE CITY OF BROKEN ARROW, WAGONER COUNTY, OKLAHOMA



Scale: 1"=100'

**Benchmark and Datum**  
 580 NAIL IN FENCE CORNER 777.44 FEET SOUTH  
 OF THE INTERSECTION OF THE PROPERTY  
 CORNER ELEV: 674.33 (NVD 82)

**Basis of Bearings**  
 BASIS OF BEARINGS IS ASSUMED USING THE  
 NEXT LINE OF THE R/W AS S 0724.50' E.

**Monumentation**  
 MONUMENTS SET AT ALL PROPERTY CORNERS.

- Legend:**
- B/L = BENCHMARK LINE
  - L/E = LANDSCAPE EASEMENT
  - S/E = SURVEY EASEMENT
  - S/W/E = UTILITY EASEMENT
  - D/E = DRIVE AND DRIVEWAY EASEMENT
  - U/A = UNITS OF NO ACCESS
  - P/L = FENCED FLOOR EASEMENT
  - = METAL ACCESS EASEMENT
  - [Z] = STREET ADDRESS

**Notes:**  
 INTERESTS SHOWN ON THIS PLAT ARE GRANTED BY THE  
 RECORDING DEPARTMENT OF THE CITY OF BROKEN ARROW  
 AND WERE ACCURATE AT THE TIME THE PLAT WAS FILED.  
 THIS PLAT IS NOT TO BE CONSIDERED AS A BASIS FOR  
 NOT BE RELIED ON IN PLACE OF THE LEGAL RECORDS.

**Owner/Developer:**  
**Tee Town Golf Ranch, Inc.**  
 An Oklahoma Corporation  
 1212 East 167th Street South  
 Glenpool, Oklahoma 74033  
 Phone: (918) 827-5891

**Engineer/Surveyor:**  
**Sisemore Weisz & Associates, Inc.**  
 Certificate of Authorization No. 2421 Exp. June 30, 2003  
 8111 East 32nd Place  
 Tulsa, Oklahoma 74135  
 Phone: (918) 865-3600

APPROVED: *S. Loize* By the City  
 Council of the City of Broken Arrow,  
 Oklahoma.  
 Mayor: *James C. Reynolds*  
 Attest: City Clerk: *Brenda Ray Orr*

STATE OF OKLAHOMA )  
 COUNTY OF WAGONER ) SS  
 I, the undersigned, County Clerk of Wagoner County, Oklahoma, do hereby certify that  
 this plat was filed in accordance with the provisions of the Oklahoma Statutes  
 relating to the recording of plats and that the same is a true and correct copy of the instrument  
 hereon set forth in full.  
 Dated this 5th day of June, 2002.  
 Wagoner County Clerk

**CERTIFICATE**  
 I hereby certify that all real estate taxes levied in this plat have  
 been paid in full to the satisfaction of the County Clerk of Wagoner County, Oklahoma.  
 The amount of taxes paid is \$2,200.70.  
 This certificate is not to be construed as payment of taxes.  
 Wagoner County Clerk  
 Dated: June 5, 2002

Wagoner County Treasurer  
*By: [Signature]*

