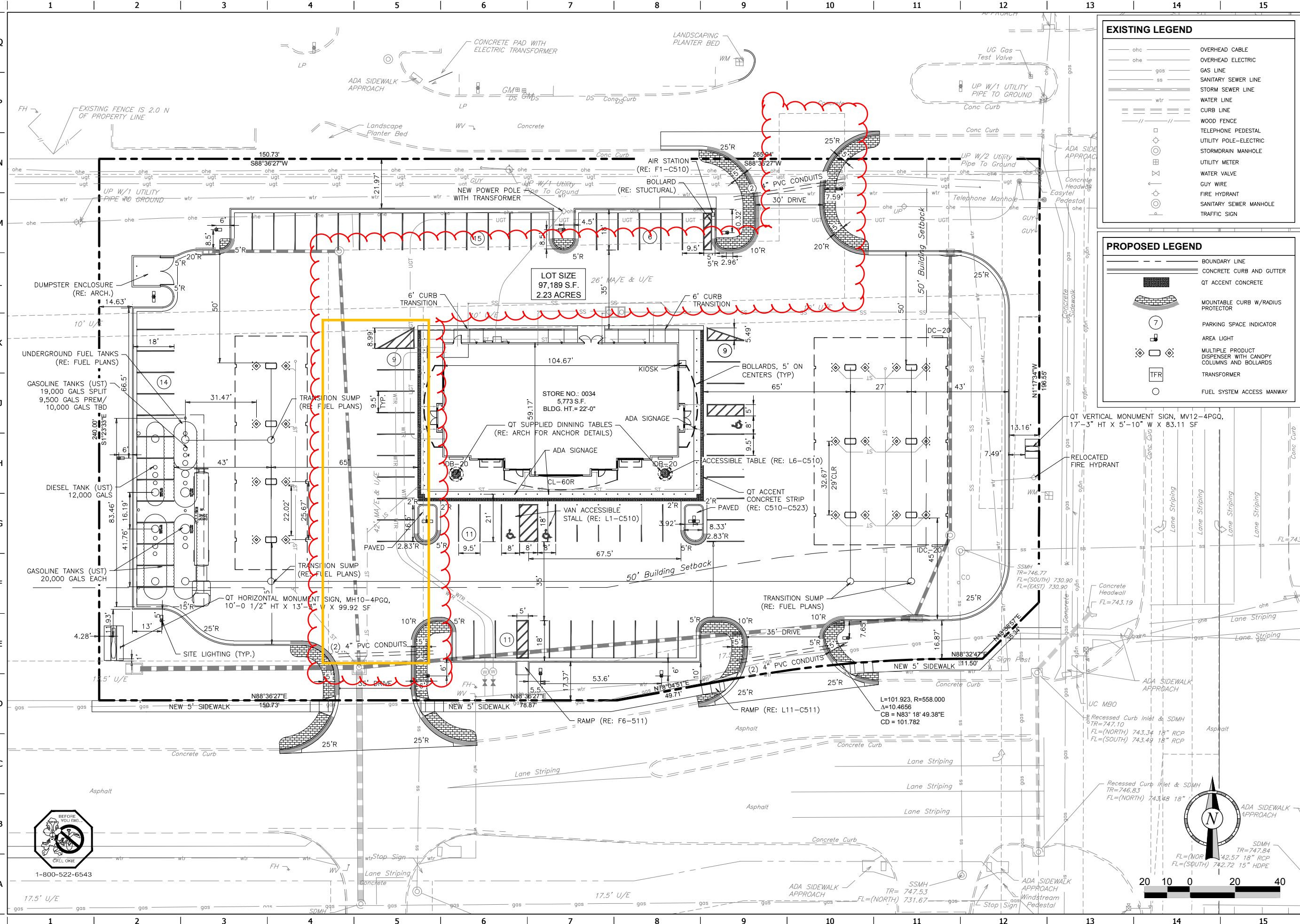


FILE LOCATION: P:\181412-QuikTrip\_0034\01-0034\_Civil.dwg TAB NAME: SITE PLAN USER: TECHOS SAVED: 8/14/2015 9:51 AM PLOTTED: 8/14/2015 9:56 AM

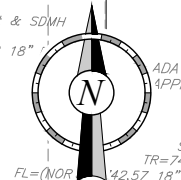


**EXISTING LEGEND**

- ohc ——— OVERHEAD CABLE
- ohw ——— OVERHEAD ELECTRIC
- gls ——— GAS LINE
- ssl ——— SANITARY SEWER LINE
- stsl ——— STORM SEWER LINE
- wtr ——— WATER LINE
- cl ——— CURB LINE
- wf ——— WOOD FENCE
- tp ——— TELEPHONE PEDESTAL
- upeg ——— UTILITY POLE-ELECTRIC
- sm ——— STORM DRAIN MANHOLE
- um ——— UTILITY METER
- wv ——— WATER VALVE
- gw ——— GUY WIRE
- fh ——— FIRE HYDRANT
- ssm ——— SANITARY SEWER MANHOLE
- ts ——— TRAFFIC SIGN

**PROPOSED LEGEND**

- — — BOUNDARY LINE
- — — CONCRETE CURB AND GUTTER
- QT ——— QT ACCENT CONCRETE
- — — MOUNTABLE CURB W/RADIUS PROTECTOR
- 7 ——— PARKING SPACE INDICATOR
- — — AREA LIGHT
- — — MULTIPLE PRODUCT DISPENSER WITH CANOPY COLUMNS AND BOLLARDS
- TFR ——— TRANSFORMER
- ——— FUEL SYSTEM ACCESS MANWAY



PROJECT NO.: #000000

**AAB Engineering, LLC**

**AAB**

Engineering • Surveying  
P.O. Box 210611 • 11 E 2nd St.  
Sand Springs, OK 74063  
OK CA#6318 Exp. June 30, 2016  
Office: (918) 514-4263  
Fax: (918) 514-4268

**QuikTrip No. 0034**

S. LYNN LANE RD. AND HILLSIDE DRIVE  
BROKEN ARROW, OKLAHOMA



© COPYRIGHT QUIKTRIP CORPORATION 2011  
ANY UNAUTHORIZED USE, REPRODUCTION,  
PUBLICATION, DISTRIBUTION, OR SALE IN  
WHOLE OR IN PART, IS STRICTLY FORBIDDEN.

PROTOTYPE: P-84 (08/01/15)

DIVISION: 001

VERSION: 001

DESIGNED BY:

DRAWN BY:

REVIEWED BY:

| REV | DATE | DESCRIPTION |
|-----|------|-------------|
|     |      |             |
|     |      |             |
|     |      |             |
|     |      |             |
|     |      |             |
|     |      |             |
|     |      |             |

ORIGINAL ISSUE DATE:

|               |           |
|---------------|-----------|
| SHEET TITLE:  | SITE PLAN |
| SHEET NUMBER: | C100      |