

Exhibit "A.2"

Buff Creek Blocks 1-7

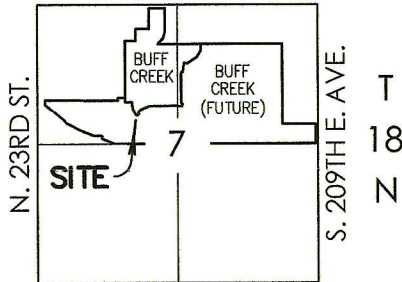
Broken Arrow, Oklahoma

Offsite Utility Easement For Storm Sewer Exhibit



NORTH
NOT TO SCALE

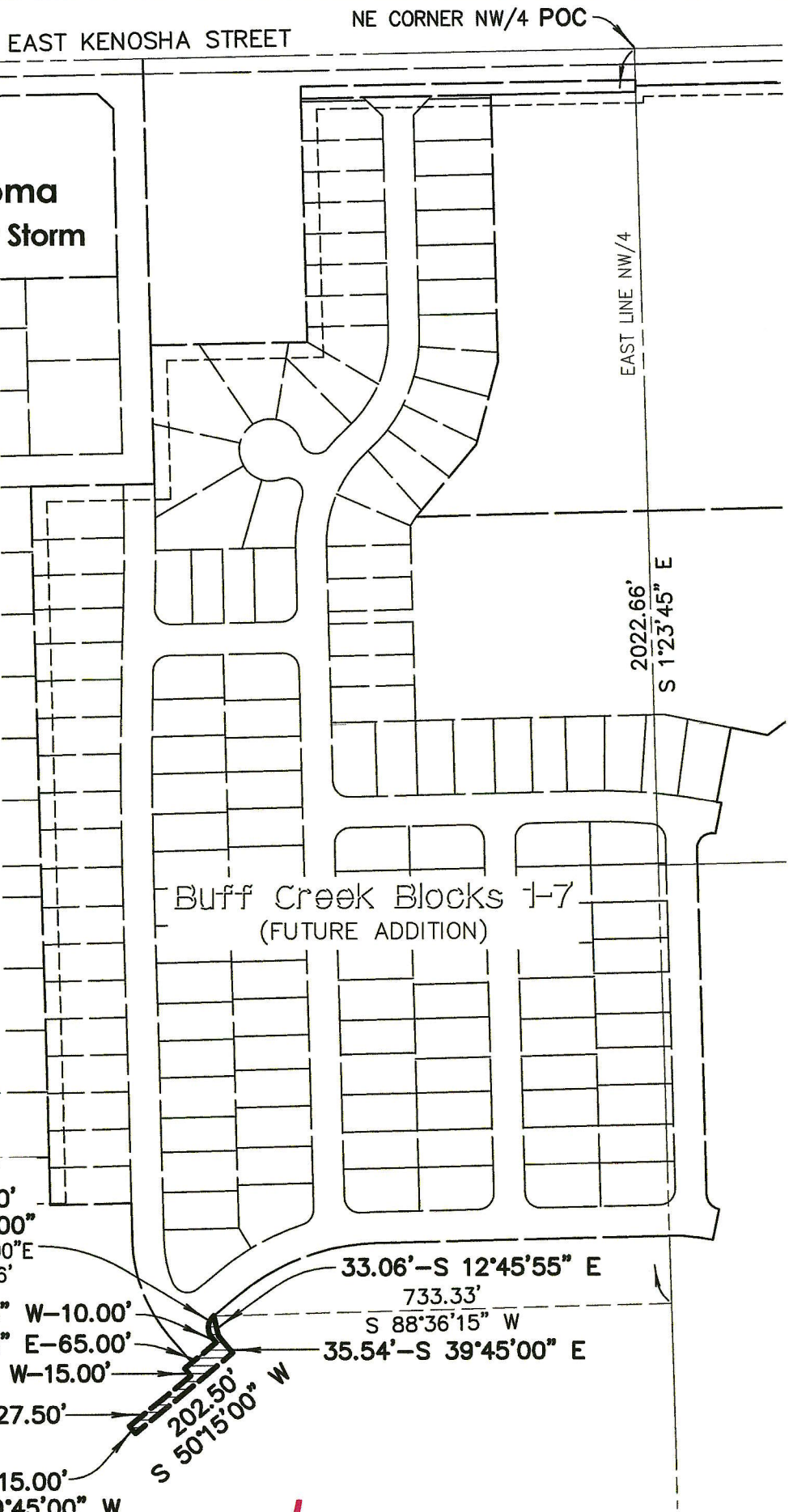
R 15 E
E. KENOSHA ST.



Location Map

LEGEND

- CB CHORD BEARING
- CD CHORD DISTANCE
- POB POINT OF BEGINNING
- POC POINT OF COMMENCEMENT



39.27'
R=25.00'
Δ=90°00'00"
CB=N5°15'00"E
CD=35.36'

N 39°45'00" W-10.00'
N 50°15'00" E-65.00'
N 39°45'00" W-15.00'

N 50°15'00" E-127.50'

15.00'
N 39°45'00" W

202.50'
S 50°15'00" W

33.06'-S 12°45'55" E
733.33'
S 88°36'15" W

35.54'-S 39°45'00" E