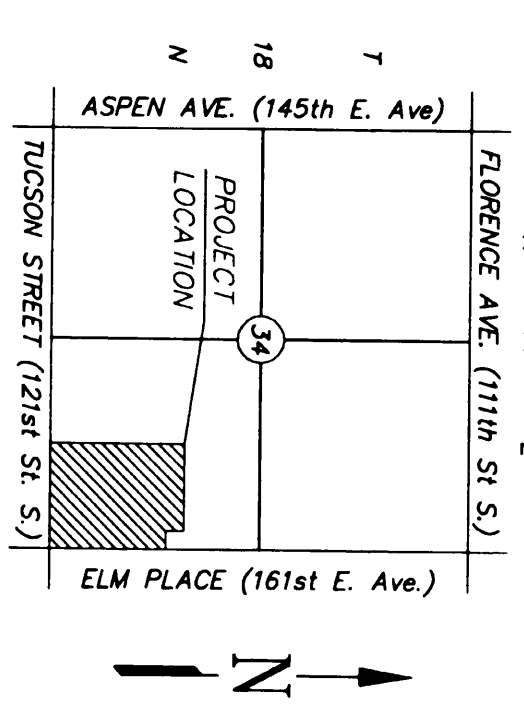
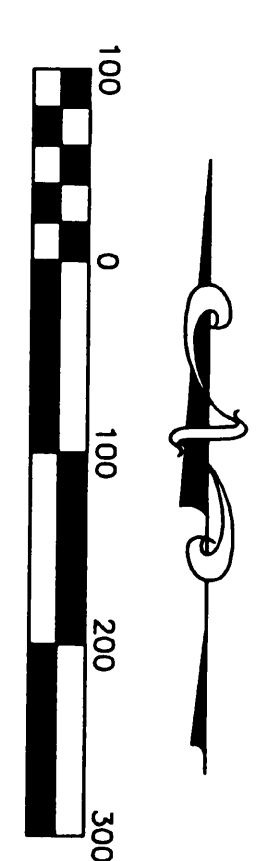


Tulsa County Clerk - EARLINE WILSON
 Plat # 02102623, Page 1 of 2, 6803/2001-2007
 Record # 601534 08/15/02 14:20:23
 Fee 15.00

FINAL PLAT
-5633 WATERLOO WAY
 PUD 126
 A PART OF THE SE/4 OF SECTION 34, T-18-N, R-14-E, I.M.
 BROKEN ARROW, TULSA COUNTY, OKLAHOMA



LEGEND

- D/E = DRAINAGE EASEMENT
- U/E = UTILITY EASEMENT
- R/D = ROW DEDICATED BY THIS PLAT
- B/L = BUILDING EASEMENT
- ROW = RIGHT OF WAY
- ROW DEDICATED BY THIS PLAT
- P.O.B. = POINT OF BEGINNING
- L.I.A. = LINE OF INTERSECTION
- L/E = LANDSCAPE EASEMENT
- O.H.E. = OVERHEAD ELECTRIC
- 6-00 = ROW LINE

OWNER/DEVELOPER:
 WAIN & MCGALLER CO. INC.
 2001 S.E. 10TH ST.
 BENTONVILLE, ARK. 72716-0560
 (901) 277-7700

ENGINEER:
 SPRENG & MCGALLER CO. INC.
 2001 S.E. 10TH ST.
 BENTONVILLE, ARK. 72716-0560
 (901) 277-7715

SURVEYOR:
 SMITH ROBERTS BALDOWILLER, LLC
 25 S. OKLAHOMA AVE., SUITE 400
 OKLAHOMA CITY, OK. 73104
 (405) 840-7094
 C.A. NUMBER 3848, EXPIRES JUNE 30, 2003

NOTE:
 EASEMENTS SHOWN HEREON OR SPECIFIC RECORDING INFORMATION ARE SHOWN FOR REFERENCE PURPOSES ONLY AND ARE NOT DEDICATED PURSUANT TO THIS PLAT. THE ADDRESSES SHOWN ON THIS PLAT WERE PROVIDED BY THE OWNER AND BECOME A PART OF THIS PLAT. THE ADDRESSES ARE SUBJECT TO CHANGE AND NOT BE RELIED ON IN PLACE OF THE DEED DESCRIPTION.

- BM #1 CURT "C" CENTER OF HEADWALL
 150' N. & 150' W. OF CORNER
 ELEVATION 88.81 CITY DATUM
- BM #2 DOUBLE END NAILS IN S. SIDE
 150' N. & 150' W. OF CORNER
 ELEVATION 88.81 CITY DATUM
- BM #3 DOUBLE END NAILS IN S. SIDE
 150' N. & 150' W. OF CORNER
 ELEVATION 88.81 CITY DATUM
- BM #4 DOUBLE END NAILS IN S. SIDE
 150' N. & 150' W. OF CORNER
 ELEVATION 88.81 CITY DATUM

NOTE: THE LIMIT OF MEASUREMENT SHOWN FOR DIMENSIONS ON THE FINAL PLAT IS FEET.
 The assumed bearing of South 88°36'59" West as shown on certificate of Tucson Street is the basis of bearing used for this survey.

APPROXIMATE LOT SUMMARY

LOT #1	22.92 AC.
LOT #2	11.81 AC.
LOT #3	0.87 AC.
LOT #4	1.83 AC.
LOT #5	1.10 AC.
LOT #6	1.12 AC.
RSV #A/B	3.15 AC.
RSV #C	0.95 AC.
PTG RD R/W	3.78 AC.
TOTAL	48.71 AC.

APPROVED 4-11-01 by the City Council of the City of Broken Arrow, Oklahoma.
 Attest: City Clerk, M. J. O'Neil

