

COUNTY LINE FOOD MART

A SUBDIVISION OF PART OF THE SOUTHEAST QUARTER (SE/4) SOUTHEAST QUARTER (SE/4) OF SECTION 24, TOWNSHIP 18 NORTH, RANGE 14 EAST OF THE INDIAN BASE AND MERIDIAN, TULSA COUNTY, STATE OF OKLAHOMA.

PLAT No.
4637
465137

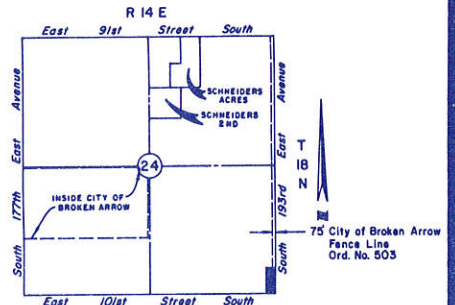
OWNERS:
OPAL D. DEETS
4101 South Maple Street
Broken Arrow, Oklahoma 74011
Tel. No. 451-0645

ENGINEER:
COX & ASSOCIATES, INC.
7935 E. 57th St. So.
Tulsa, Oklahoma 74145
Tel. No. 664-3337

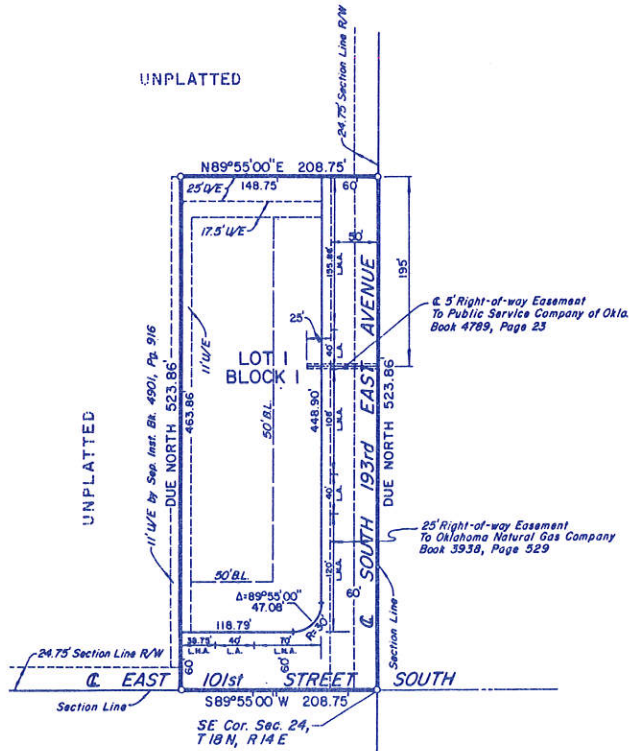
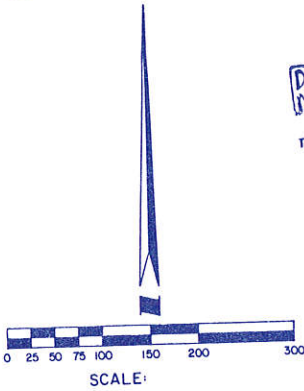
RECEIVED
JAN 17 1986
TULSA METRO. AREA
PLANNING COMM.

LEGEND
U/E - Denotes Utility Easement
B.L. - Denotes Building Line
D/E - Denotes Drainage Easement
L.A. - Denotes Limits Of Access
L.N.A. - Denotes Limits Of No Access

STATE OF OKLAHOMA
TULSA COUNTY
FILED OR RECORDED
1986 APR - 2 PM 2:20
JUAN HASTINGS
TULSA COUNTY CLERK



LOCATION MAP
SCALE: 1"=2000'
2.5105 ACRES



FINAL PLAT
CERTIFICATE OF APPROVAL
I hereby certify that this plat was approved by the Tulsa Metropolitan Area Planning Commission on 11/23/1986
DEPUTY DIRECTOR, TMAPC/INCOG
This approval is void if this plat is not filed in the office of the County Clerk on or before 1/11/1987
COUNTY COMMISSIONER ENGINEER

This plat was approved by the Tulsa City-County Health Department on OCT 24 1986 and released in accordance with the Subdivision Regulations of the Tulsa Metropolitan Area Planning Commission.
Subdivision Administrator

Handwritten notes and signatures, including a date of 3/16/86 and a signature of Juan Hastings, Deputy County Clerk.