



Final Plat 5881 Aspen Park Village

A PART OF THE W/2 OF SW/4 OF SECTION 3, T-18-N, R-14-E
 AN ADDITION TO THE CITY OF BROKEN ARROW
 TULSA COUNTY, OKLAHOMA

P.U.D. No: 118A & 118B

SURVEYOR: Benchmark Surveying & Land Services, Inc.
 P.O. Box 1078
 Owasso, Oklahoma 74055
 Phone: (918) 274-9081

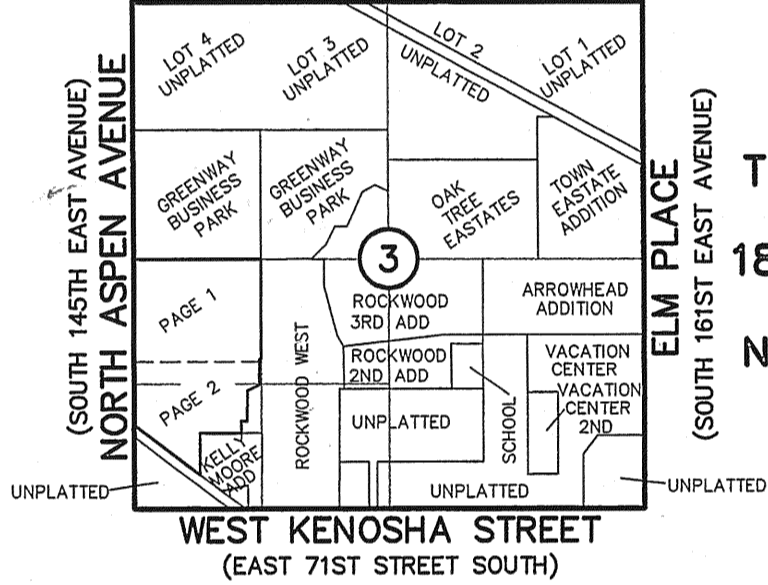
OWNER: Aspen Land Development, LLC.
 5128 S. 95th East Ave.
 Tulsa, Oklahoma 74145
 Phone: (918) 663-4400



ENGINEER: Independent Design Consultants, LLC
 1520 W. Dogwood St.
 Rogers, Arkansas 72758
 Phone: (501) 636-8558

I, Earlene Wilson, Tulsa County Clerk, in and for the County and State above named, do hereby certify that the foregoing is a true and correct copy of a file instrument now on file in my office.

Dated the 16th day of June 2005
 EARLENE WILSON, Tulsa County Clerk R 14 E
 (EAST 61ST STREET SOUTH)
 Alencie Callison R 14 E
 Deputy (ALBANY STREET)



Location Map
 SCALE: 1"=2000'

SUBDIVISION CONTAINS
 31 LOTS IN 4 BLOCKS
 TOTAL AREA: 54.06 ACRES

BEARING BASE: RECORDED PLAT OF KELLY-MOORE ADDITION
 BENCHMARK: RAILROAD SPIKE IN POWER POLE
 APPROXIMATELY 28 FEET SOUTH OF THE SW CORNER OF LOT 3, BLOCK 1
 ELEVATION: 731.57
 NATIONAL GEODETIC VERTICAL DATUM OF 1929
 ALL CORNERS MONUMENTED WITH 3/8" IRON PINS

- A/E ACCESS EASEMENT
- ACC ACCESS PERMITTED
- B/L BUILDING SETBACK LINE
- D/E DRAINAGE EASEMENT
- DM/E DEVELOPER MONUMENT EASEMENT
- LNA LIMITS OF NO ACCESS
- L/E LANDSCAPE EASEMENT
- OD/E OVERLAND DRAINAGE EASEMENT
- R/W RIGHT-OF-WAY
- S/E SIDE WALK EASEMENT
- U/E UTILITY EASEMENT
- UC UNDERGROUND PIPELINE

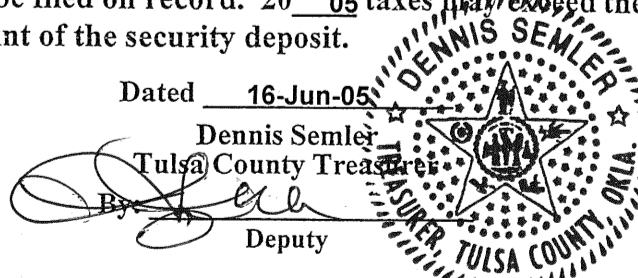
Notes

- ADDRESSES SHOWN ON THIS PLAT ARE ACCURATE AS OF THE TIME THE PLAT WAS FILED. ADDRESSES ARE SUBJECT TO CHANGE AND SHOULD NEVER BE RELIED ON IN PLACE OF THE LEGAL DESCRIPTION.
- STORMWATER DETENTION ACCOMMODATIONS FOR THIS PLAT ARE PROVIDED BY THE ONSITE DETENTION FACILITIES SHOWN IN THE "NO EXCEPTIONS TAKEN" ENGINEERING PLANS.

CERTIFICATE

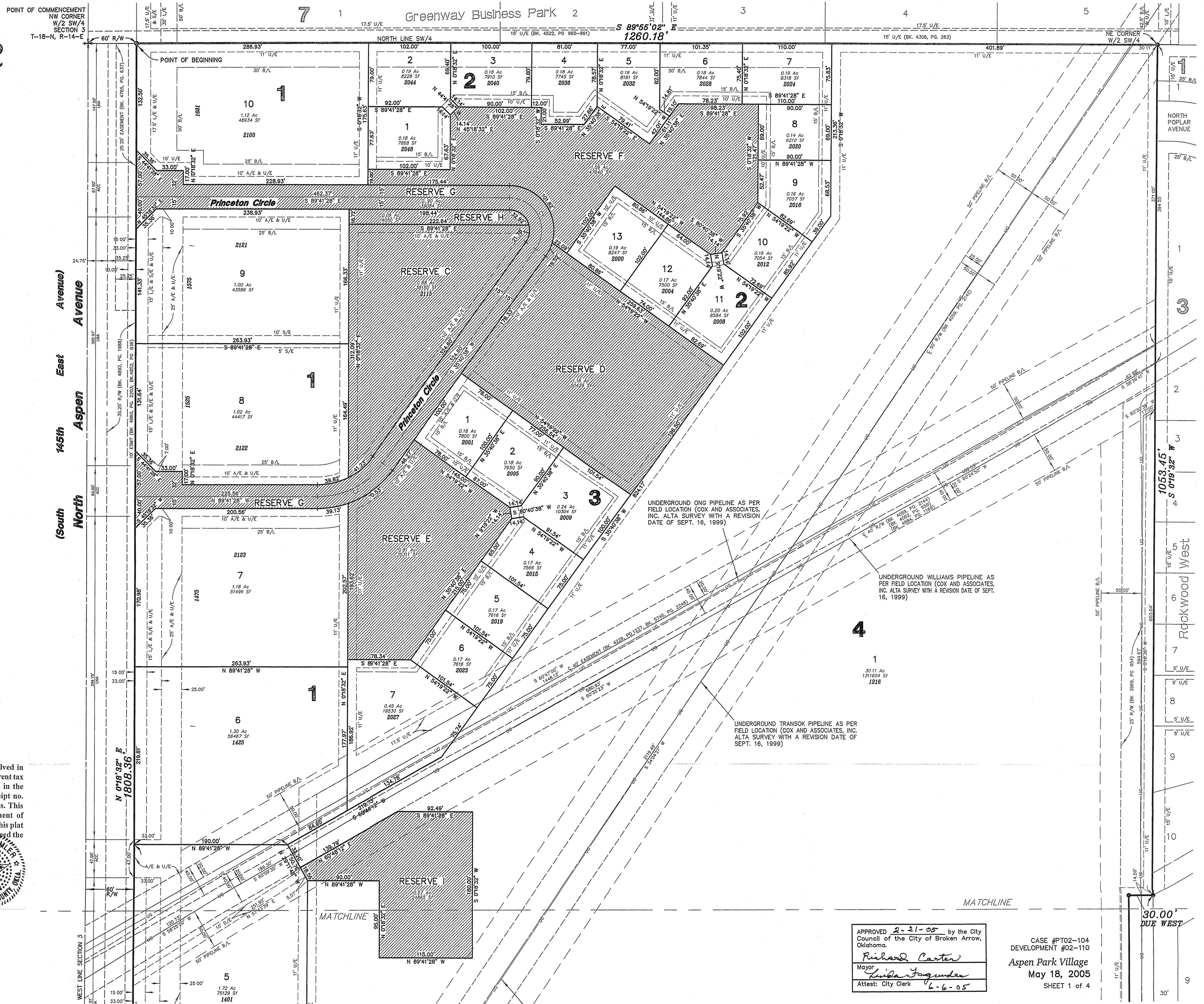
I hereby certify that all real estate taxes involved in this plat have been paid as reflected by the current tax rolls. Security as required has been provided in the amount of \$ 43,412.00 per trust receipt no. 6736 to be applied to 20 05 taxes. This certificate is NOT to be construed as payment of 20 05 taxes in full but is given in order that this plat may be filed on record. 20 05 taxes may be imposed the amount of the security deposit.

Dated 16-Jun-05
 Dennis Semler
 Tulsa County Treasurer
 Deputy



Curve Information

CURVE #	LENGTH	DELTA	RADIUS	CHORD	BEARING
C1	87.52'	125°22'06"	40.00'	71.08'	S 27°00'25" E
C2	95.36'	54°37'54"	100.00'	91.78'	S 62°59'35" W



APPROVED 2-31-05 by the City Council of the City of Broken Arrow, Oklahoma.
 Richard Carter
 Mayor
 Attest: City Clerk
 6-6-05

CASE #PT02-104
 DEVELOPMENT #02-110
 Aspen Park Village
 May 18, 2005
 SHEET 1 of 4

30.00 DUE WEST