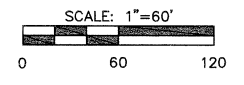




COWAN GROUP ENGINEERING
 5416 S. VALE AVENUE, SUITE 210
 TULSA, OK 74113
 918-949-6171 | 918-949-6174
 WWW.COWANGROUP.CO
 CA# 6414 EXPIRES 6/30/2016



CURVE TABLE					
CURVE NO.	LENGTH	RADIUS	CENTRAL ANGLE	CHORD BEARING	CHORD DISTANCE
C1	156.19'	178.00'	50°16'32"	N83°47'43"E	151.23'
C2	148.83'	142.00'	60°03'06"	S88°41'00"W	142.11'
C3	757.20'	530.00'	81°51'26"	N74°03'54"W	694.43'

NOTES:

- CURRENT PROJECT WILL INCLUDE PHASE I IMPROVEMENTS AND ASSOCIATED INFRASTRUCTURE. EARTH WORK AND SOME UTILITY AND DRIVE WORK TO FACILITATE PHASE II FUTURE ELEMENTS ARE SHOWN FOR INFORMATION ONLY. PHASE I BUILDINGS INCLUDE HOTEL, POOL AND CONFERENCE CENTER. PHASE II FUTURE BUILDINGS ARE THE 8-STORY BOUTIQUE HOTEL, EVENT CENTER AND 3-STORY PARKING STRUCTURE.
- DONATED FROM ROLAND INVESTMENT, LTD. TO THE CITY OF BROKEN ARROW.
- THIS OVERALL SITE PLAN IS PROVIDED FOR INFORMATION ONLY. IT SHOWS THE ULTIMATE BUILD OUT OF THE DEVELOPMENT AND SOME OFFSITE WORK. ALONG WITH THE PHASE I PROPOSED WORK

CONFORMANCE SET

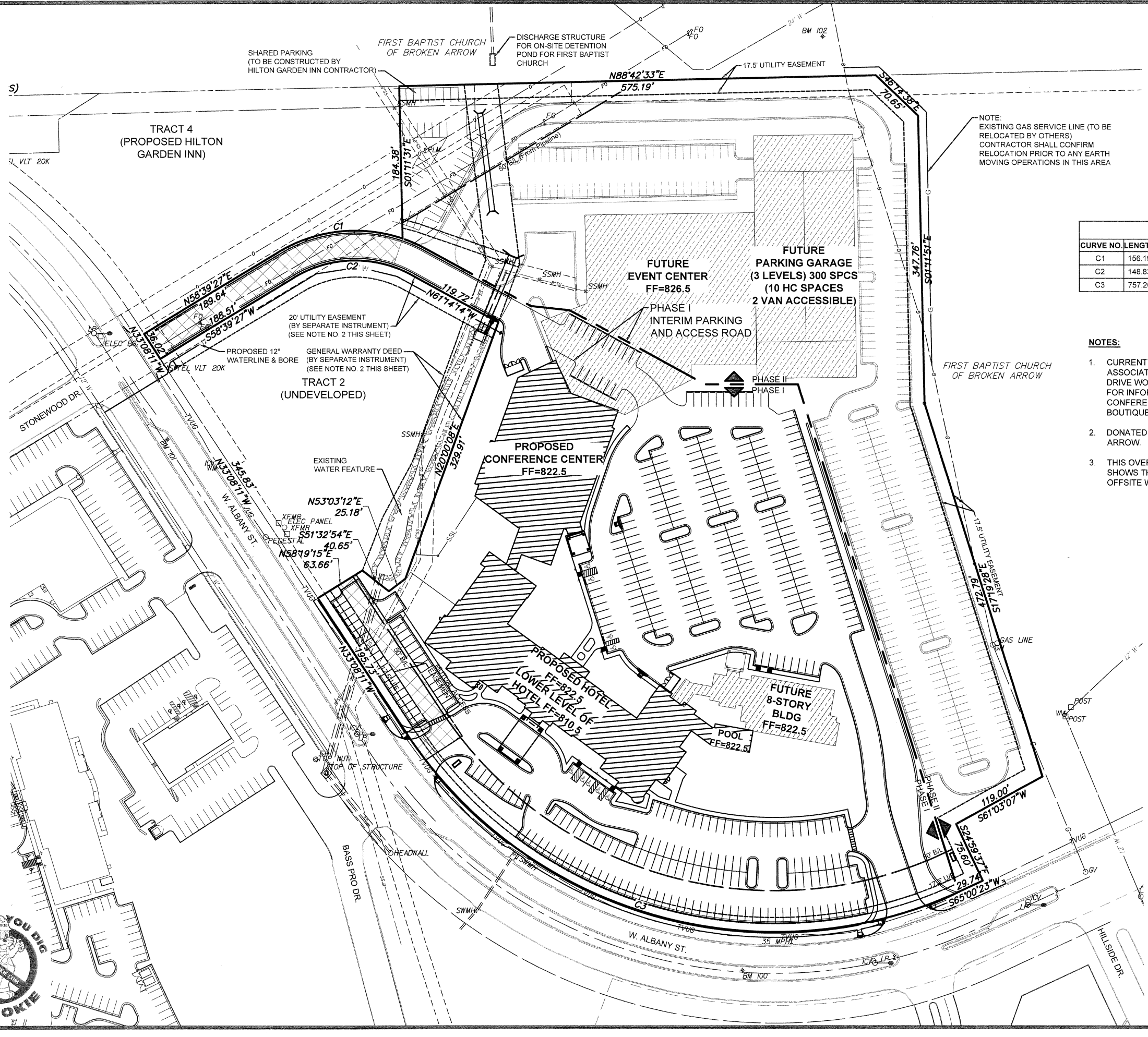
**STONEY CREEK HOSPITALITY
 HOTEL AND CONFERENCE CENTER
 BROKEN ARROW, TULSA COUNTY, OKLAHOMA**

SITE PLAN

DESIGNED BY: RKF
 DRAWN BY: KRR
 REVIEWED BY: KDS
 PROJECT NUMBER: #14-256
 DATE: 6/17/2015

REVISIONS
 CONFORMANCE SET
 ISSUED 17 JUNE 2015

SHEET NUMBER: 5



PLOTED: Wednesday, June 17, 2015, 10:51AM



NA\PROJECTS\14-256 STONEY CREEK HOTEL & CONFERENCE CENTER\DWG\ECY\14-256-EC SITE PLAN.DWG