

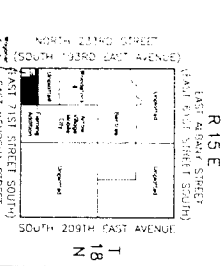
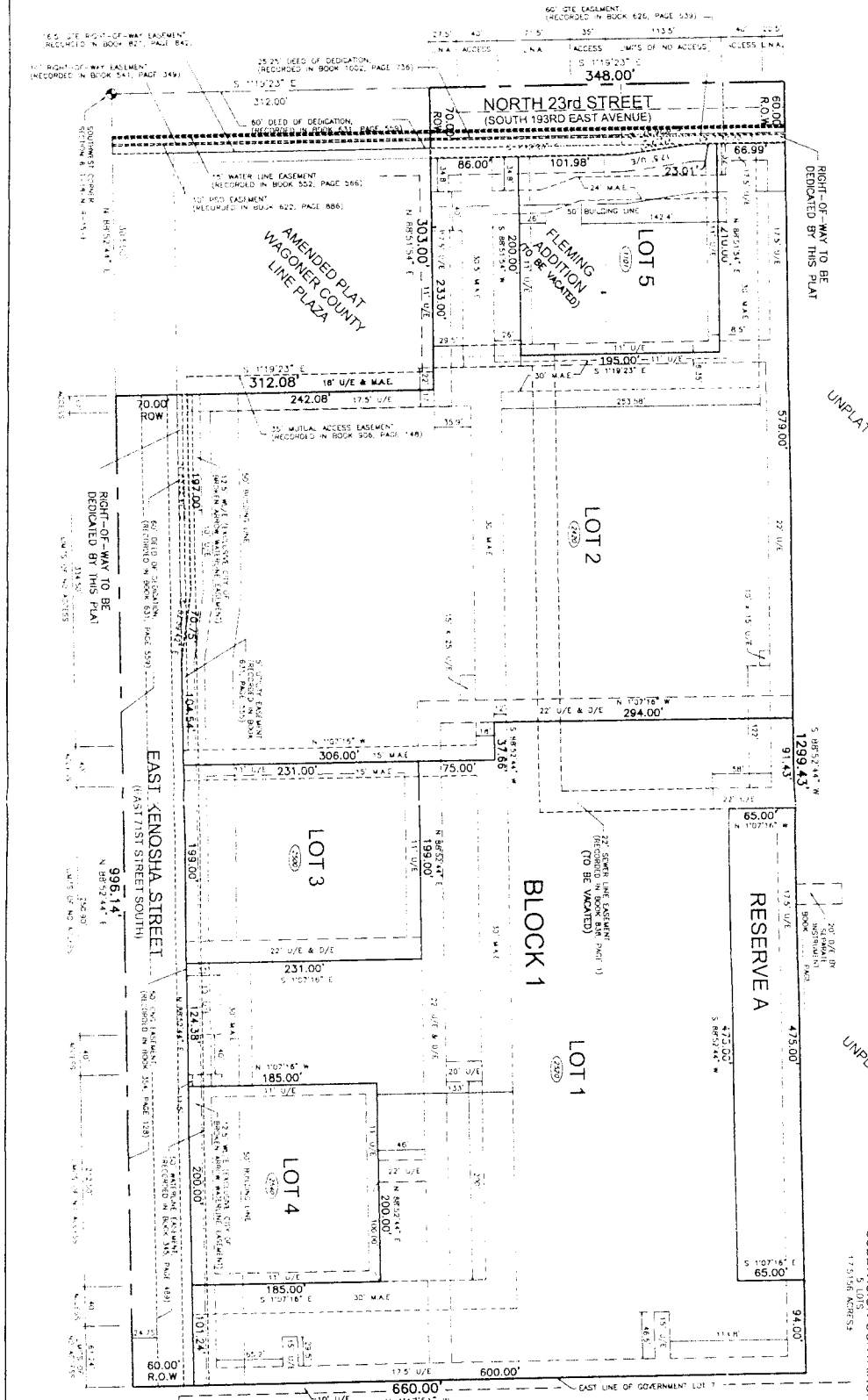
ENGINEER
WHITE Surveying
 610 N. M. A. N. Y.
 1000 WEST 10TH AVENUE
 SUITE 100
 OKLAHOMA CITY, OKLAHOMA 73106
 (405) 521-1111
 www.white-surveying.com

ENGINEER
ALBERTSON'S INC.
 a Delaware Corporation
 1000 WEST 10TH AVENUE
 SUITE 100
 OKLAHOMA CITY, OKLAHOMA 73106
 (405) 521-1111
 www.albertsons.com

ENGINEER
LARRY D. FLEMING
 an individual
 2325 S. W. 10TH
 OKLAHOMA CITY, OKLAHOMA 73106
 (405) 521-1111
 www.larrydfleming.com

FINAL PLAT
TIGER PLAZA
 AN ADDITION TO THE CITY OF BROKEN ARROW,
 BEING A RESUBDIVISION OF FLEMING ADDITION
 AND A PART OF GOVERNMENT LOT 7, SECTION 6, T-18 N, R-15E,
 WAGONER COUNTY, STATE OF OKLAHOMA

SUBDIVISION CONTAINS:
 5 LOTS
 17,519.6 SQUARE FEET
 17,519.6 SQUARE FEET



LEGEND
 U/E = UTILITY EASEMENT
 W/L/E = WATER LINE EASEMENT
 M/A/E = MUTUAL ACCESS EASEMENT
 S.N.A. = SURFACE NO ACCESS
 R.O.W. = RIGHT-OF-WAY
 BENCHMARK ARE BASED ON THE RECORDED PLAT BEARING OF THE WEST LINE OF BLOCK 1, FLEMING ADDITION, AN ADDITION TO THE CITY OF BROKEN ARROW, WAGONER COUNTY, STATE OF OKLAHOMA.

BENCHMARK
 THE POINT OF BEGINNING FOR THIS PLAT WAS ACCURATE AT THE TIME THIS PLAT WAS FILED. ADDRESSES ARE SUBJECT TO CHANGE AND SHOULD BE OBTAINED FROM THE LOCAL DESCRIPTIONS.

LEGAL DESCRIPTION
 ALL LOT CORNERS ARE MARKED WITH AN 8" DIAMETER RE. OAK, 18" NICHES LONG WITH YELLOW PLASTIC CAP STAMPED WHITE 15-10527.

MONUMENT NOTE
 THE SECTION 54 MARKERS HAVE 4500 PFT SIX (6) THUMBS AND EIGHTEN (18) SECTION MARKERS AND WAGONER COUNTY LIMITED STATES GOVERNMENT SURVEY HEREBY LESS AND TRUST THAT PORTION DESCRIBED AT AMENDED WAGONER COUNTY JUDICIAL PLAT BEING A PART OF GOVERNMENT LOT 7, SECTION 6, T-18 N, R-15E, WAGONER COUNTY, STATE OF OKLAHOMA ACCORDING TO THE RECORDED PLAT THEREOF.

TIGER PLAZA
FINAL PLAT

Deed Name: Parcel 1A

Starting Coordinates: Northing 5445.37, Easting 5792.21

Bearing	Distance	Type	Radius	Arc Len	Delta	Tangent	Description
S 01°17'51" E	15.00	LINE					
S 88°52'49" W	46.00	LINE					
N 00°00'00" W	15.00	LINE					
N 88°52'49" E	46.00	LINE					

Ending Coordinates: Northing 5345.37, Easting 5792.21

Area: 111.90 S.F., 0.0160 Acres

Total Perimeter Distance> 123.00

Closure Error Distance> 0.0000 Error Bearing> N 90°00'00" E

Closure Precision> 1 in 37500000.00