

Data Summary

Commercial (CG)	±3.90 Acres
Light Industrial (IL)	±115.65 Acres
Residential (R2)	±7.33 Acres 0 DU's
TOTAL	±126.88 Acres 0 DU's

Underlying Zoning Plan & Tract Map

Developed by:



Engineering by:



ENGINEERING - LAND DEVELOPMENT & DESIGN

CA 5179 EX. 6/30/11
 7967 Lariat Circle Broken Arrow, OK
 918-286-7299 (v) 918-286-87186 (fax)

Land Planning by:



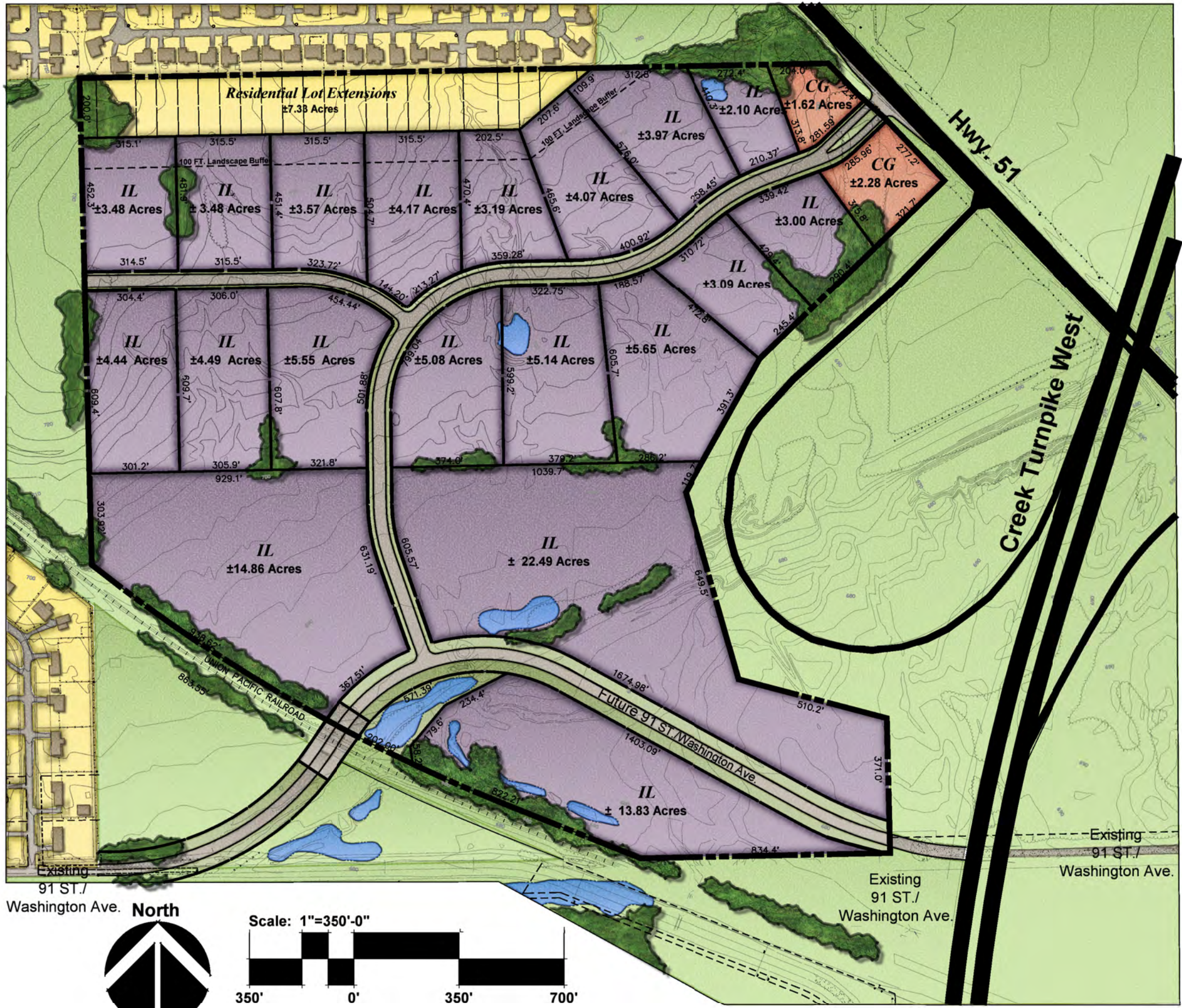
Golf & Resort Communities, Land Planning, Zoning, Golf Architecture, & Site Design
 1709 W. Granger St., Broken Arrow, OK 74012
 Phone: 918 355-8552 FAX: 918 355-8393

office@pittmanpoe.com www.pittmanpoe.com

Copyright © 2010 by Pittman Poe & Associates, Inc. use of this drawing is prohibited without the expressed written permission of Pittman Poe & Associates, Inc.

5000

7/27/10



Data Summary

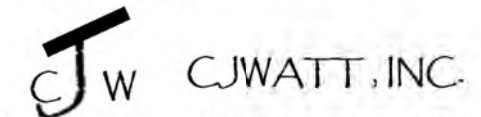
Commercial (CG)	±3.90 Acres	±127,413 SF.
Light Industrial (IL)	±115.65 Acres	±3,778,286 SF.
Residential (R2)	±7.33 Acres	0 DU's
TOTAL	±126.88 Acres	0 DU's ±3,905,699 SF.

Conceptual Development Plan

Developed by:



Engineering by:



CJWATT, INC.
ENGINEERING - LAND DEVELOPMENT & DESIGN
CA 5179 EX. 6/30/11
7967 Lariat Circle Broken Arrow, OK
918-286-7299 (v) 918-286-87186 (fax)

Land Planning by:



office@pittmanpoe.com www.pittmanpoe.com

Golf & Resort Communities, Land Planning,
Zoning, Golf Architecture, & Site Design
1709 W. Granger St., Broken Arrow, OK 74012
Phone: 918 355-8552 FAX: 918 355-8393
Copyright © 2010 by Pittman Poe & Associates, Inc.
Use of this drawing is prohibited without the expressed written
permission of Pittman Poe & Associates, Inc.

#5000

7/27/10