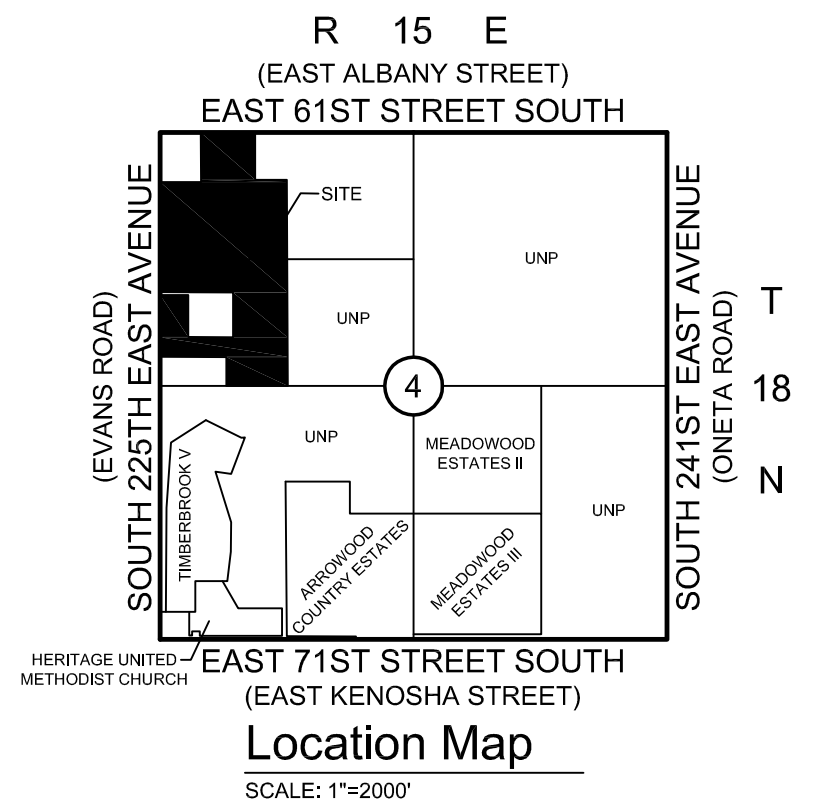
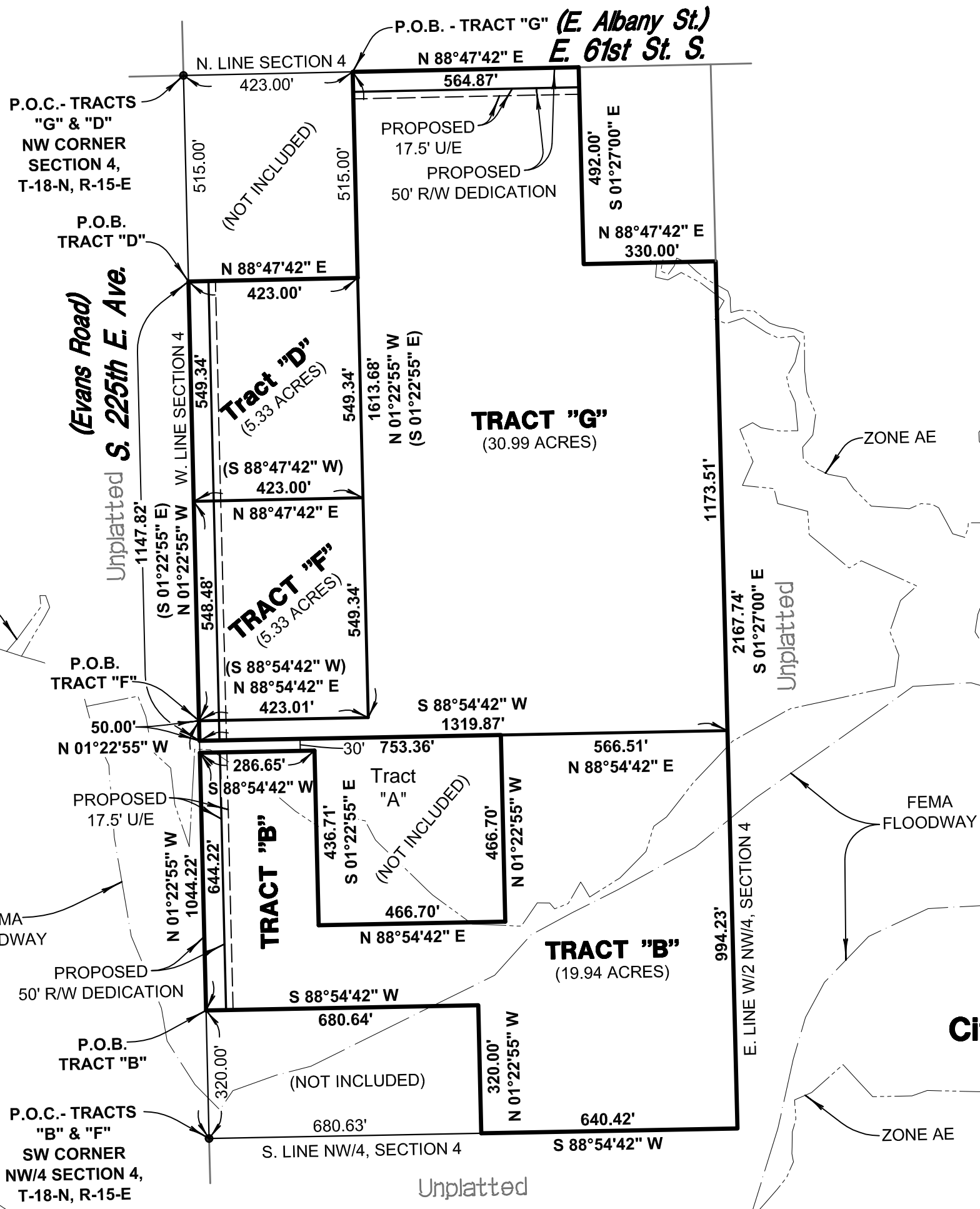


K:\13200.02\Exhibits\LOT-SPLIT-EXH.dwg SHEET 1 Feb 15, 2016 - 10:09:17am SISEMORE WEISZ & ASSOCIATES, INC., 2016



# Lot Split Exhibit of Part of the W/2 of the NW/4 of Section 4, T-18-N, R-15-E City of Broken Arrow, Wagoner County, Oklahoma

**Sisemore Weisz & Associates, Inc.**  
 6111 EAST 32nd PLACE  
 TULSA, OKLAHOMA 74135  
 C.A. NO. 2421  
 PHONE: (918) 665-3800  
 FAX: (918) 665-8668  
 EXP. DATE 6/30/17

REVISIONS	BY	DATE	FILE:	1815.0440	SURVEY BY:	DATE:	2/9/16	
			ORDER:	13200.02	DRAWN BY:	LAD	SCALE:	1"=300'
			BOOK:		CHECKED BY:	MC	SHEET	1 OF 1