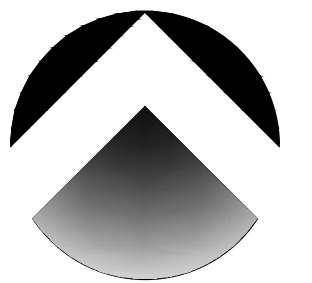


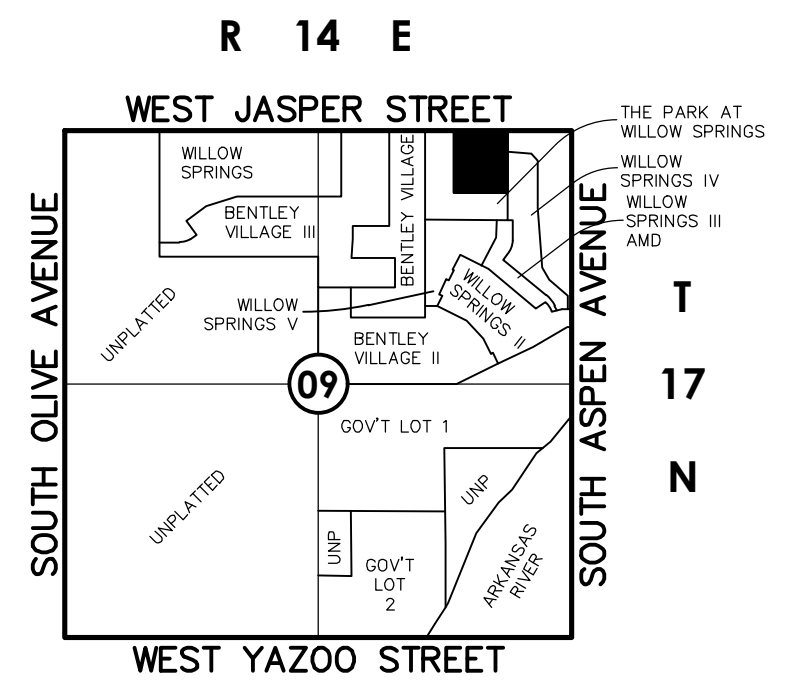
CONCEPTUAL UTILITY PLAN

Bentley Square

PART OF THE NORTHEAST QUARTER (NE/4) OF SECTION NINE (09)
TOWNSHIP SEVENTEEN (17) NORTH, RANGE FOURTEEN (14) EAST, OF THE INDIAN MERIDIAN
A SUBDIVISION WITHIN THE CITY OF BROKEN ARROW, TULSA COUNTY, STATE OF OKLAHOMA



NORTH
Scale: 1"= 50'
Tanner Consulting

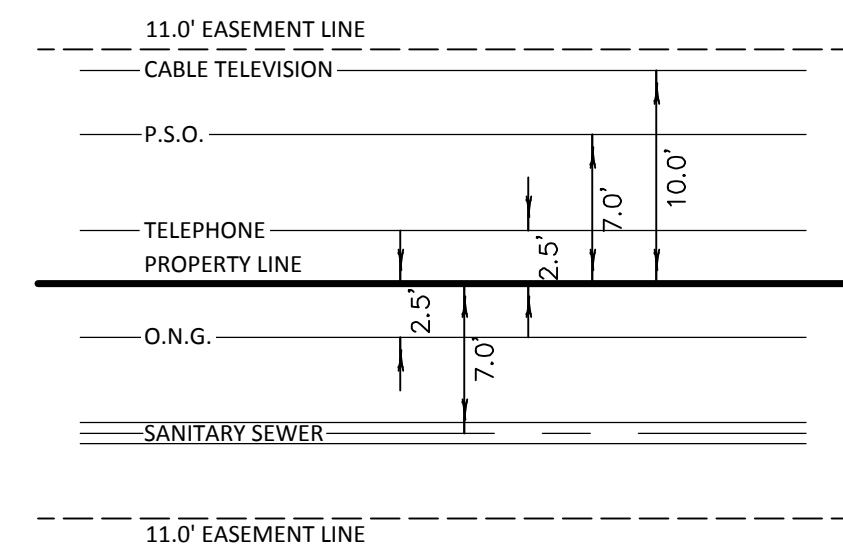


Location Map
Scale: 1"= 2000'

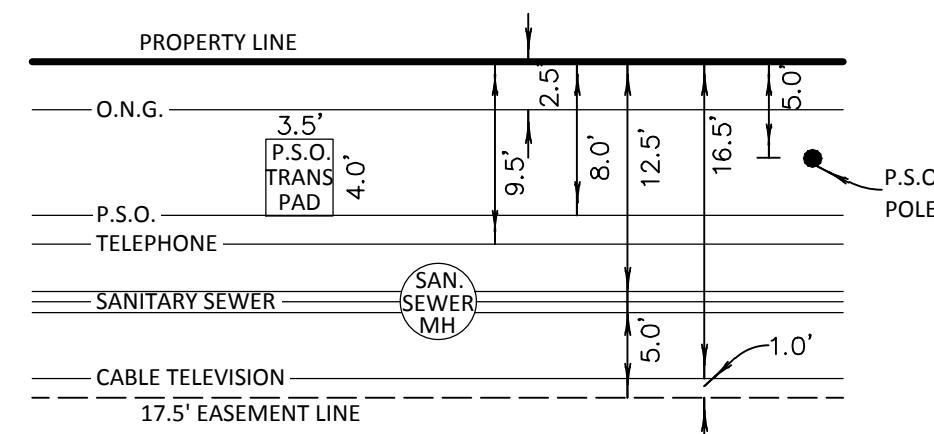
SUBDIVISION CONTAINS:
THIRTY-THREE (33) LOTS
IN THREE (3) BLOCKS & ONE (1) RESERVE
GROSS SUBDIVISION AREA: 8.143 ACRES

SURVEYOR/ENGINEER:
Tanner Consulting, L.L.C.
DAN E. TANNER, P.L.S. NO. 1435
OK CA NO. 2661, EXPIRES 6/30/2017
5323 South Lewis Avenue
Tulsa, Oklahoma 74105
Phone: (918)745-9929

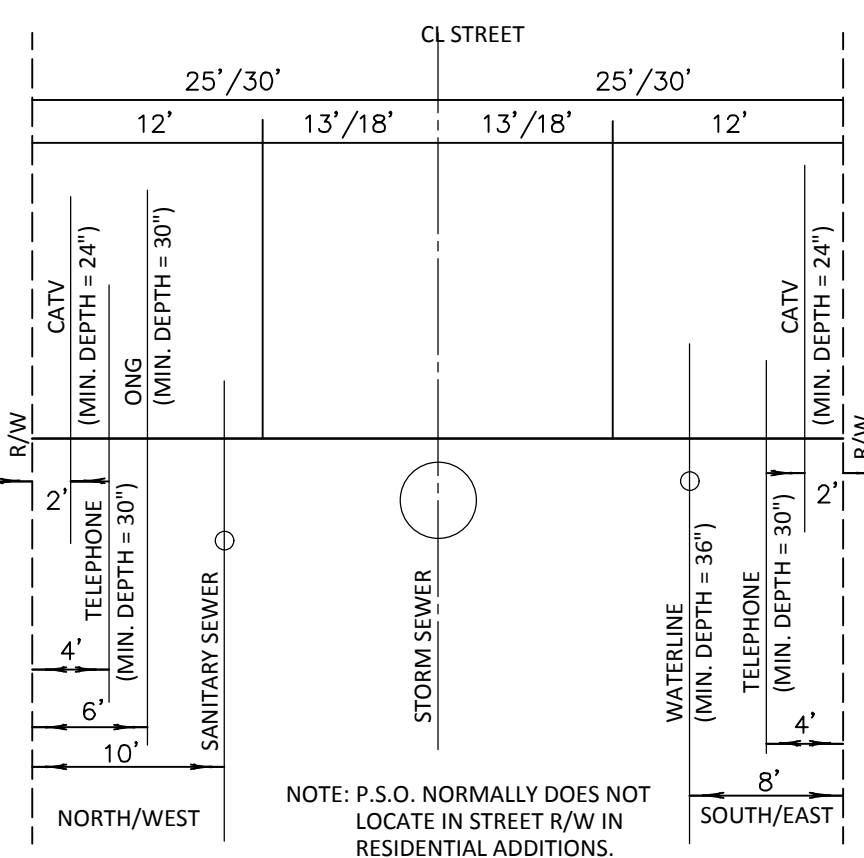
OWNER:
HHBG, LLC
CONTACT: DAVID GIBSON
1908 N. Willow Ave. Suite "A"
Broken Arrow, Oklahoma 74012
Phone: (918)252-2417



BACK TO BACK 11.0' EASEMENTS
STANDARD LOCATION OF UNDERGROUND UTILITIES



17.5' PERIMETER EASEMENT
STANDARD LOCATION OF UNDERGROUND UTILITIES



STANDARD LOCATION OF
UNDERGROUND UTILITY LINES FOR
RESIDENTIAL STREETS

