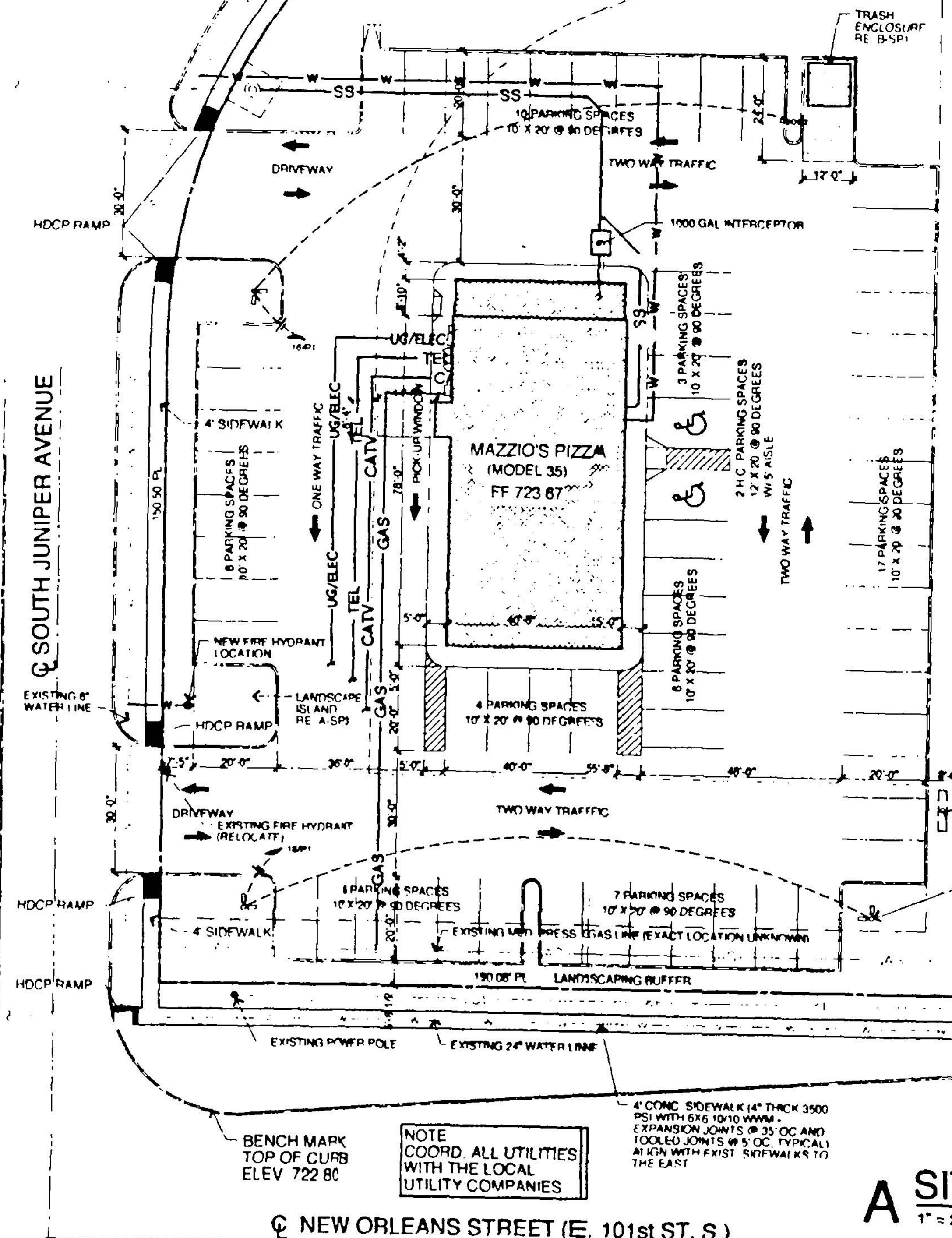
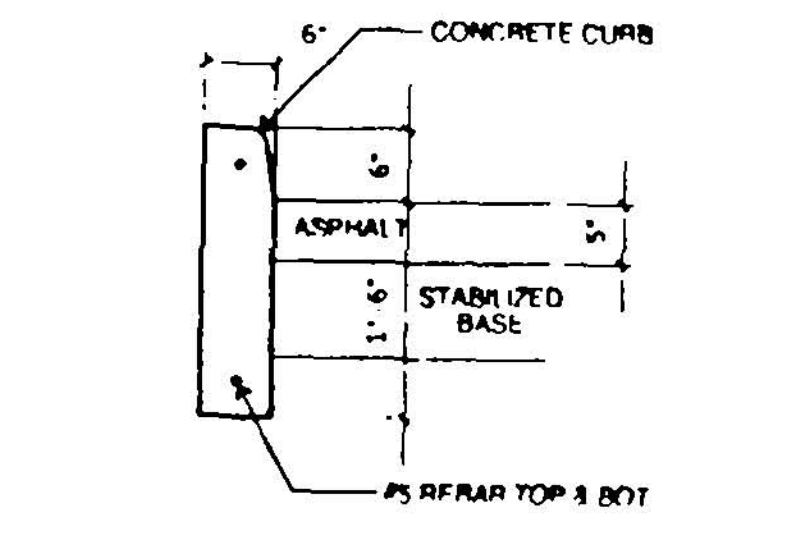
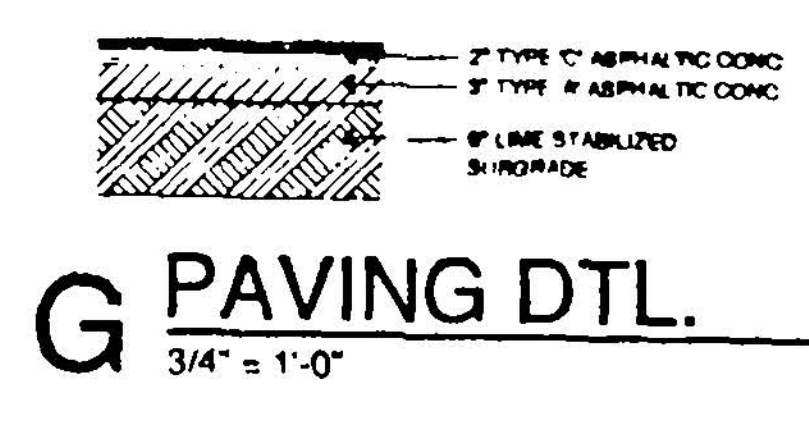


VICINITY MAP
 LEGAL DESCRIPTION:
 Lot 1, Block 1 Vandever Green, an addition to the City of Broken Arrow, Tulsa County, State of Oklahoma



NOTE
 COORD. ALL UTILITIES
 WITH THE LOCAL
 UTILITY COMPANIES

A SITE PLAN
 1" = 20'-0"



F TYP. CURB DTL.
 3/4" = 1'-0"

INDEX TO DRAWINGS

- SP1 SITE PLAN
- SP2 GRADING PLAN
- S1 FOUNDATION PLAN
- S2 ROOF FRAMING
- A1 FLOOR PLAN
- A2 EXTERIOR ELEVATIONS
- A3 BUILDING SECTIONS
- A4 WALL SECTIONS & DETAILS
- A5 REFLECTED CEILING PLAN
- A6 EQUIPMENT PLAN
- A7 INTERIOR ELEVATIONS
- P1 PLUMBING
- M1 HVAC
- E1 POWER
- E2 LIGHTING

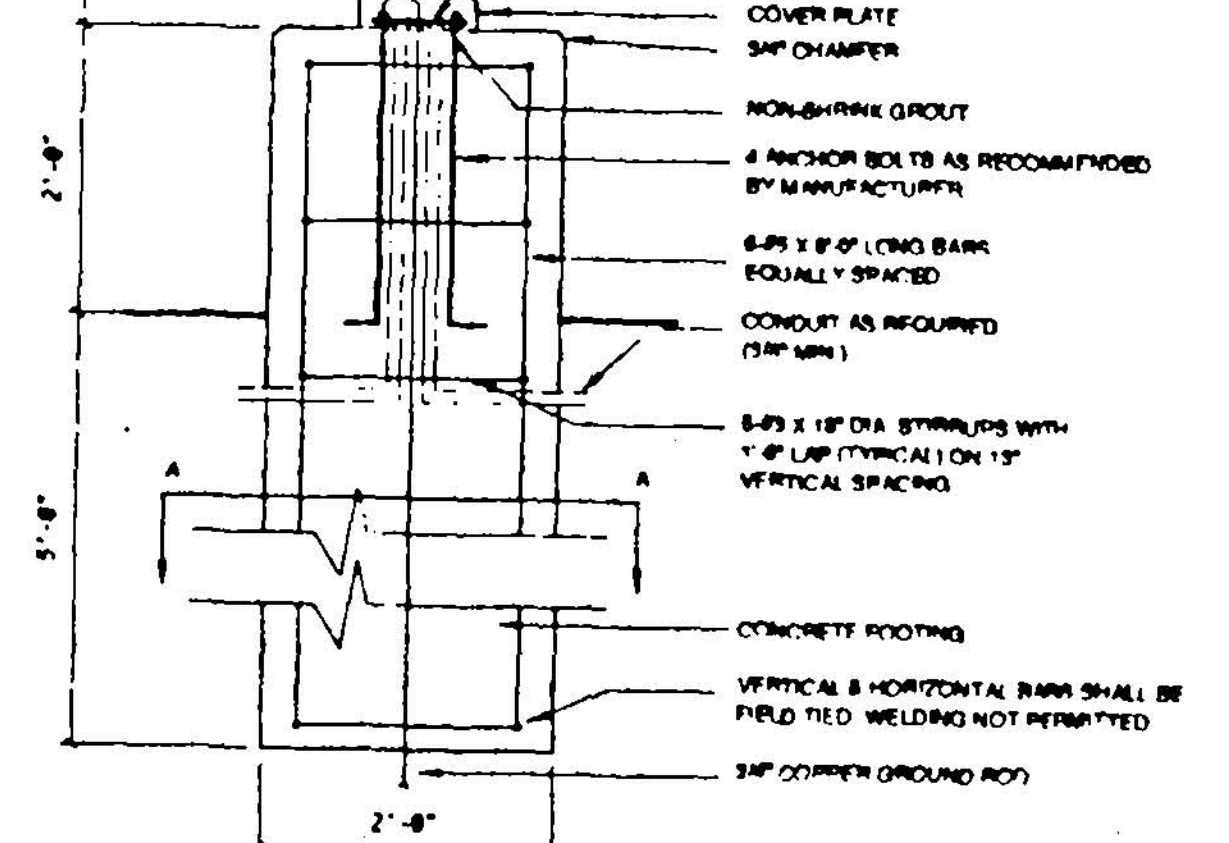
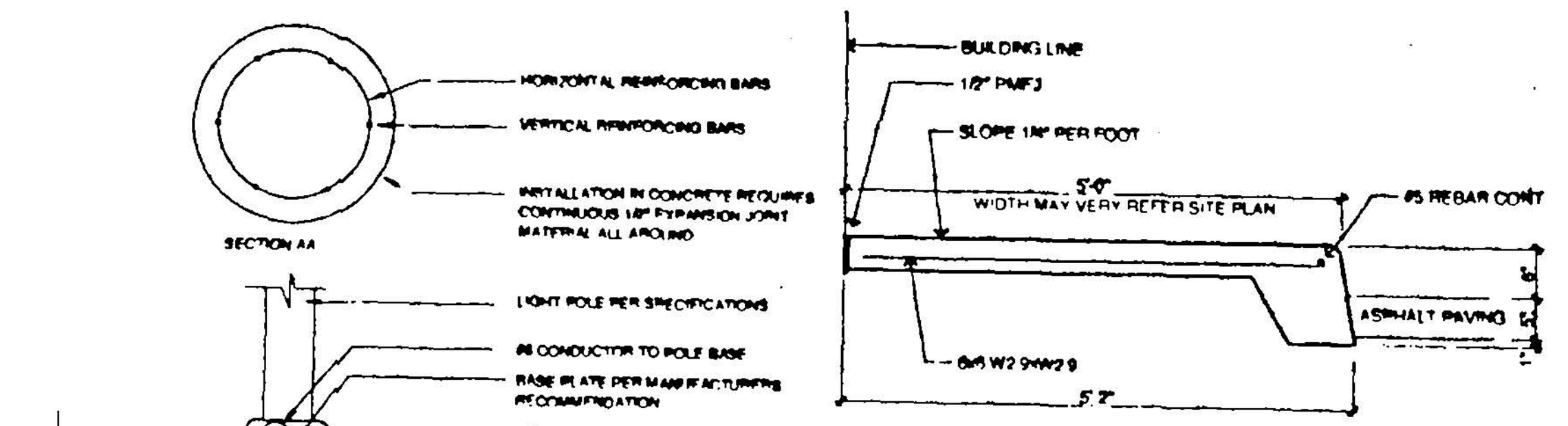
LEGEND

- BOUNDARY LINE
- GAS GAS
- SS SANITARY SEWER
- UG/ELEC UNDERGROUND ELECTRIC
- T&E OVERHEAD TELEPHONE & ELECTRIC
- W WATER
- TEL TELEPHONE
- CATV CABLE TV
- BORING LOCATION

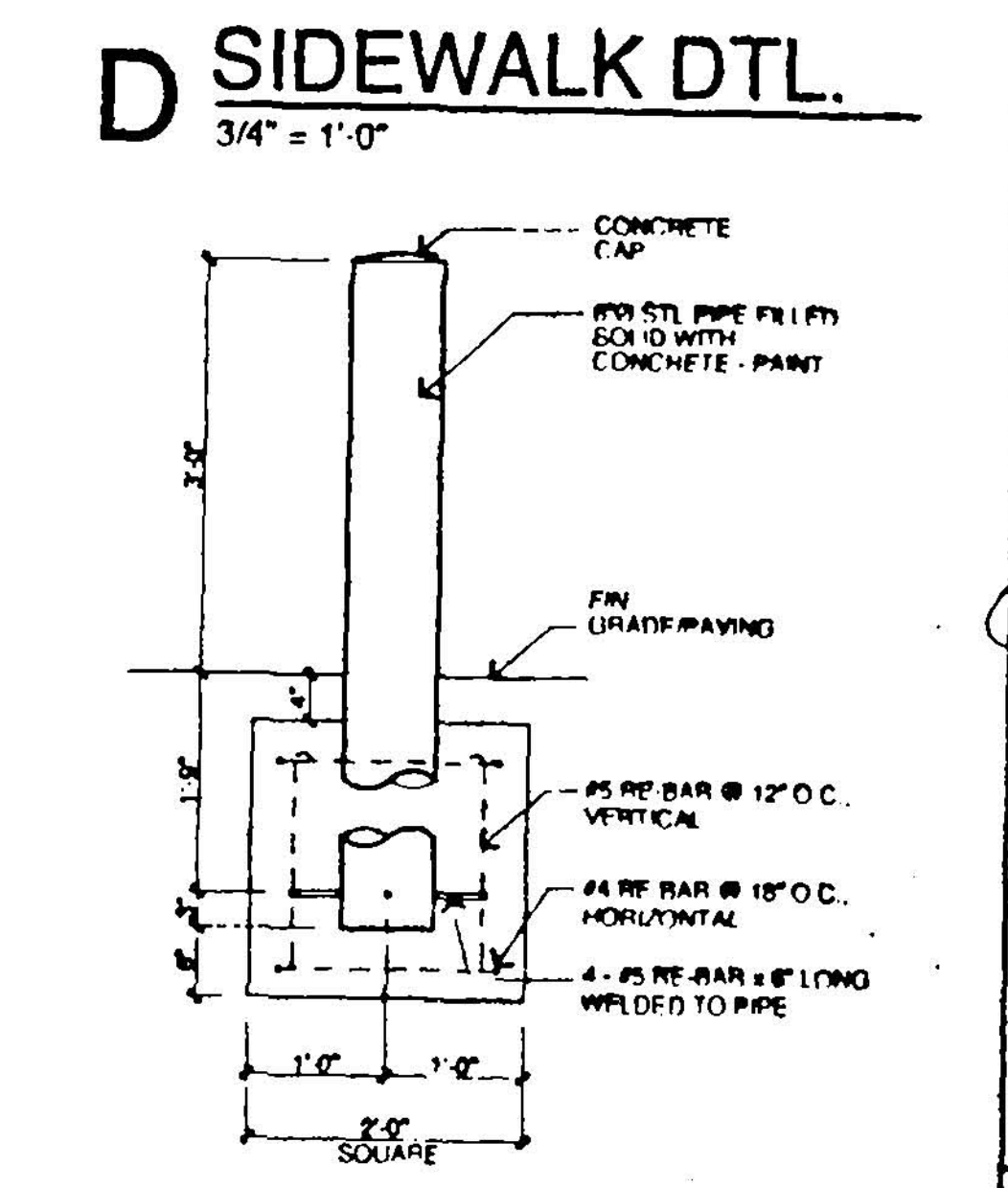
ON-SITE PARKING SPACES
 80 REGULAR PARKING SPACES
 2 HANDICAP PARKING SPACES
 82 TOTAL PARKING SPACES
 SITE AREA APPROX 55,000 SF

DBL FACE POLE SIGN
 W/ MESSAGE SIGN BOARD
 PER CITY SIGN REGULATIONS

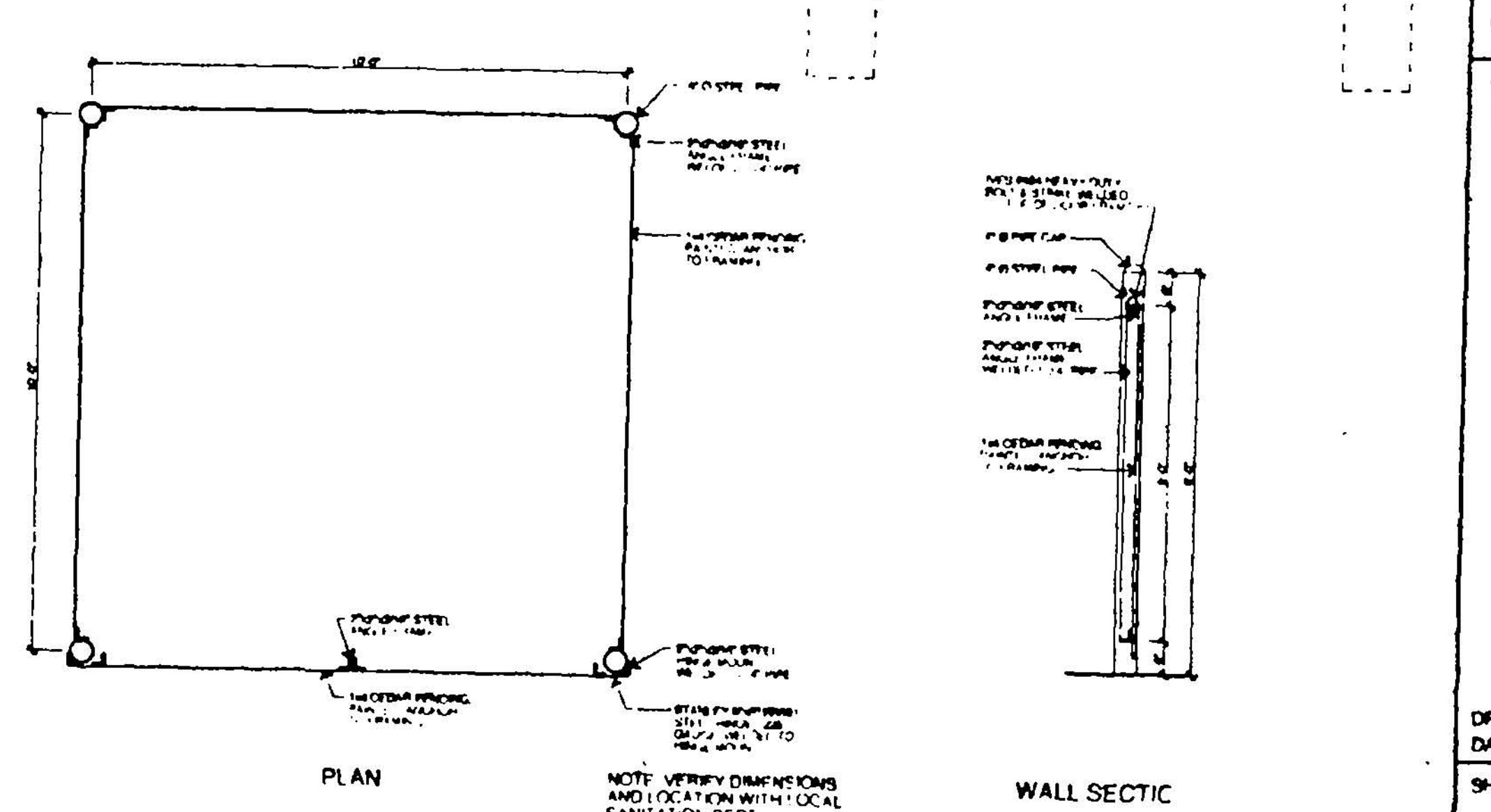
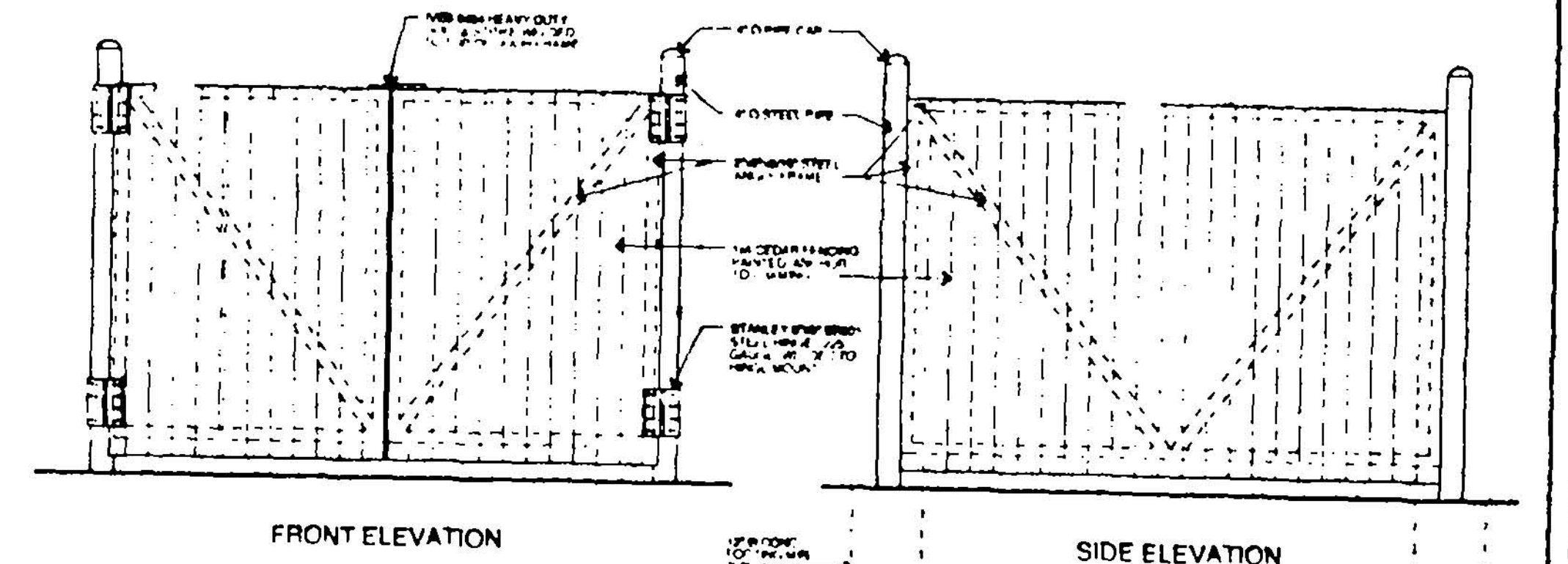
TOWN LT. EXITS
 ON 10' POLE
 TYP. OF 3
 RE E-SP1



E LIGHT POLE BASE
 3/4" = 1'-0"



C BOLLARD DTL.
 3/4" = 1'-0"



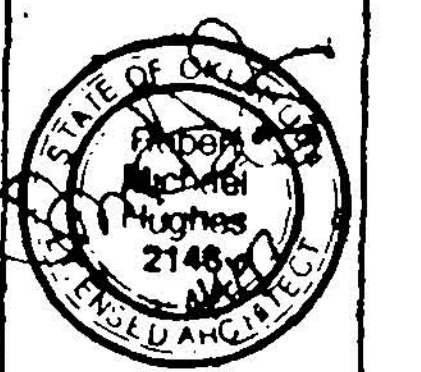
B TRASH ENCLOSURE
 NO SCALE



Mazzio's
 101st & Juniper
 Broken Arrow, OK

MAZZIO'S CORPORATION
 4441 S. 72nd E. AVE.
 TULSA, OKLA. 74145
 (918) 485-4900

Professional Engineer
 State of Oklahoma
 License No. 11993
 (12/15/77 - 12/15/97)



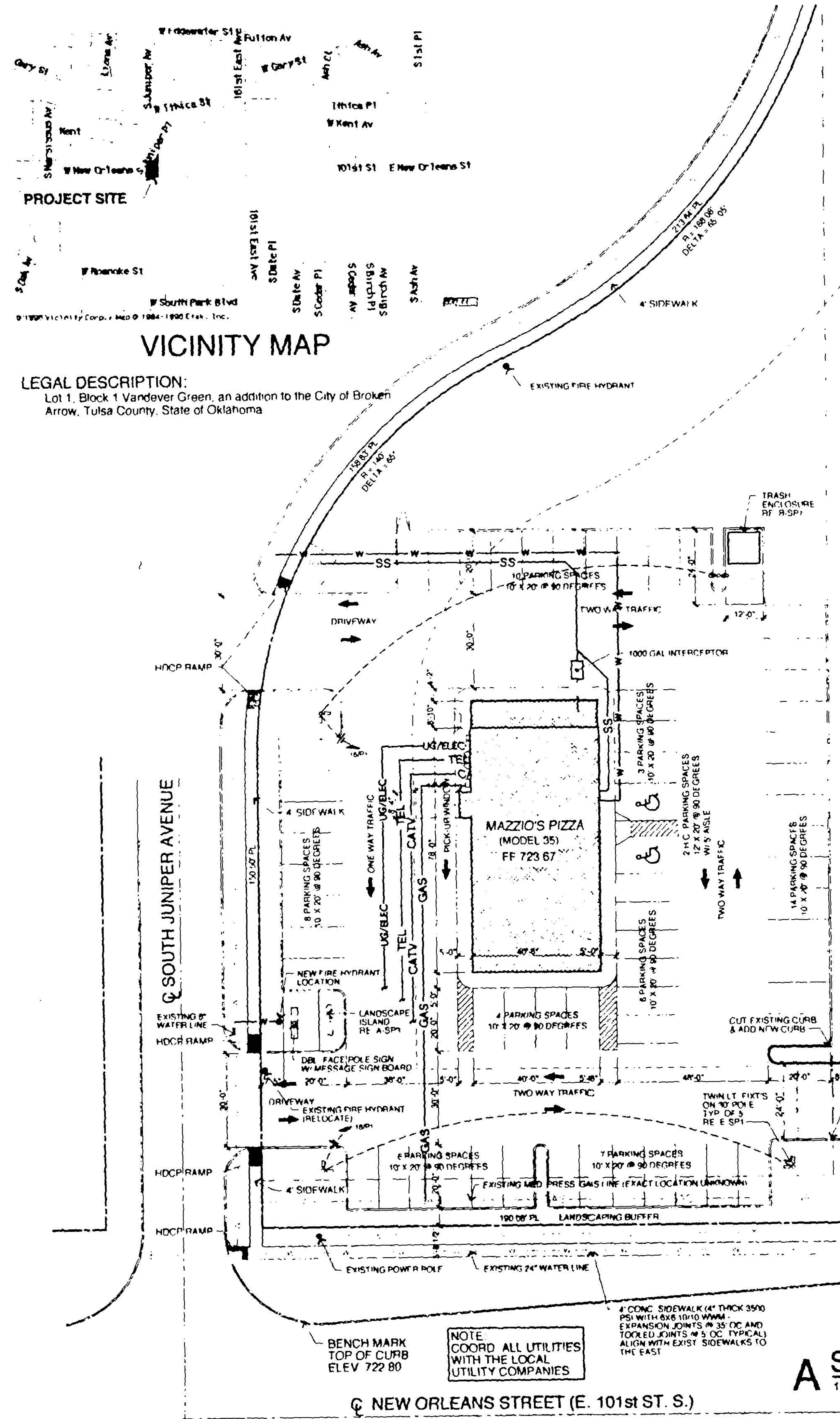
**SITE PLAN
 MODEL 33**

SHEET INDEX

SPHA PROJ NO 87003
 REV DATE
 28 FEB 97
 18 MAR 97
 28 MAR 97
 4 APR 97

DRAWING
 DATE 14 FEB 97
 SHEET NO

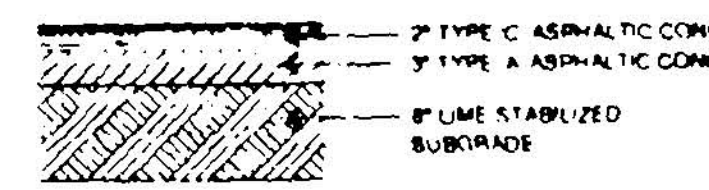
SP1



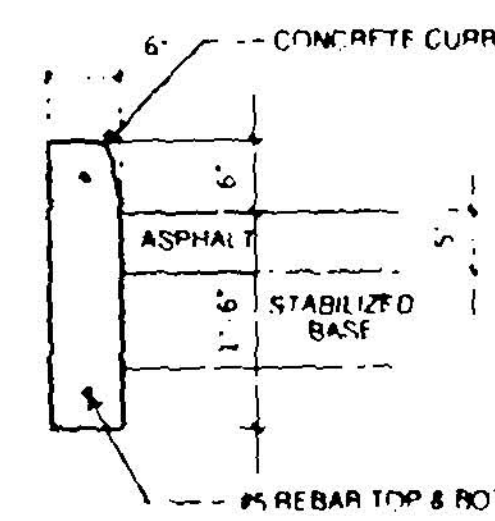
VICINITY MAP

LEGAL DESCRIPTION:
 Lot 1, Block 1 Vandever Green, an addition to the City of Broken Arrow, Tulsa County, State of Oklahoma

G PAVING DTL.
 3/4" = 1'-0"



F TYP. CURB DTL.
 3/4" = 1'-0"



INDEX TO DRAWINGS

- SP1 SITE PLAN
- SP2 GRADING PLAN
- S1 FOUNDATION PLAN
- S2 ROOF FRAMING
- A1 FLOOR PLAN
- A2 EXTERIOR ELEVATIONS
- A3 BUILDING SECTIONS
- A4 WALL SECTIONS & DETAILS
- A5 REFLECTED CEILING PLAN
- A6 EQUIPMENT PLAN
- A7 INTERIOR ELEVATIONS
- P1 PLUMBING
- M1 HVAC
- E1 POWER
- E2 LIGHTING

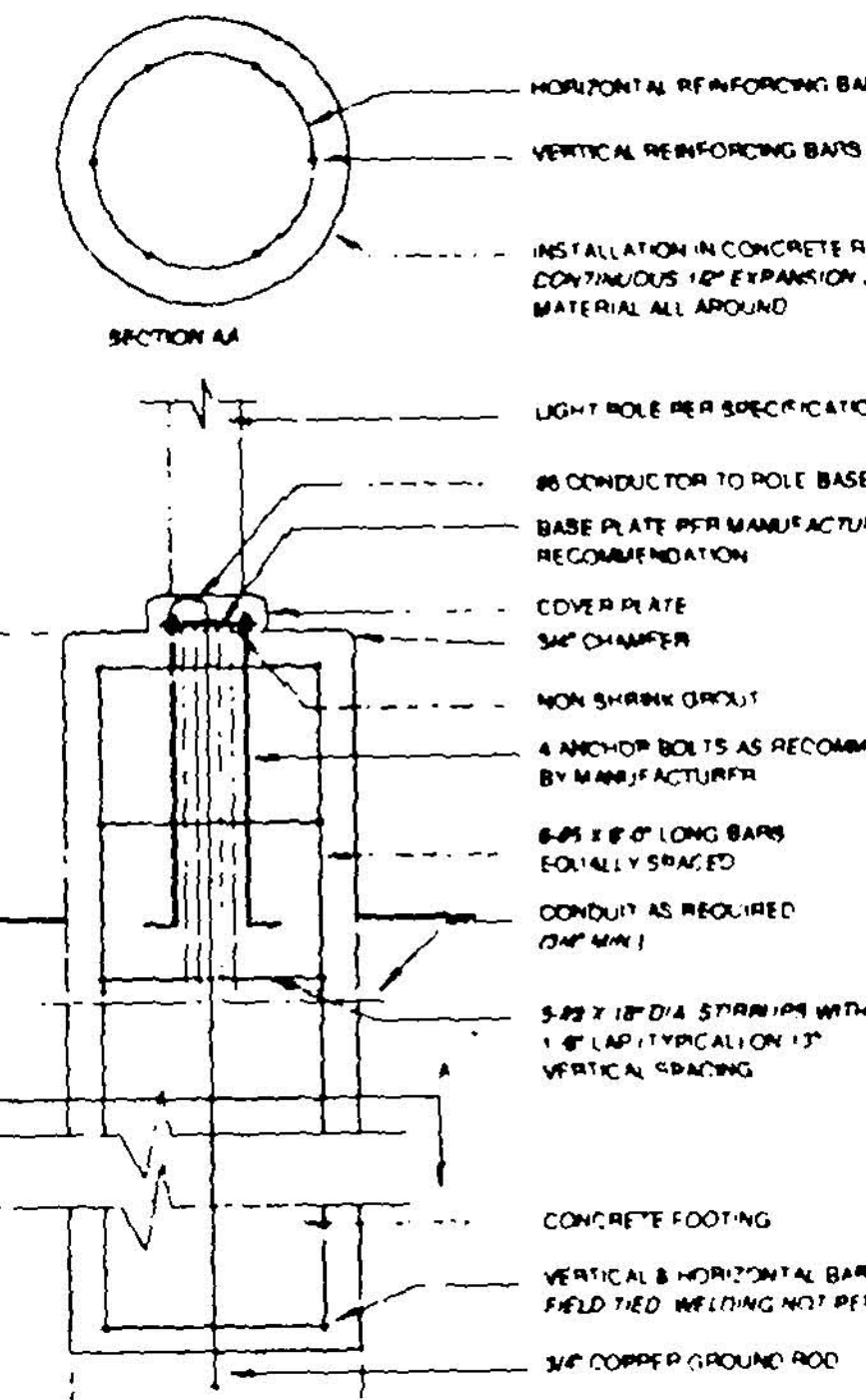
LEGEND

- BOUNDARY LINE
- GAS
- SS SANITARY SEWER
- UG/ELEC UNDERGROUND ELECTRIC
- T&E OVERHEAD TELEPHONE & ELECTRIC
- W WATER
- TEL TELEPHONE
- CATV CABLE TV
- ROOFING LOCATION

ON-SITE PARKING SPACES

- 57 REGULAR PARKING SPACES
- 2 HANDICAP PARKING SPACES
- 59 TOTAL PARKING SPACES
- SITE AREA APPROX 55,001 SF

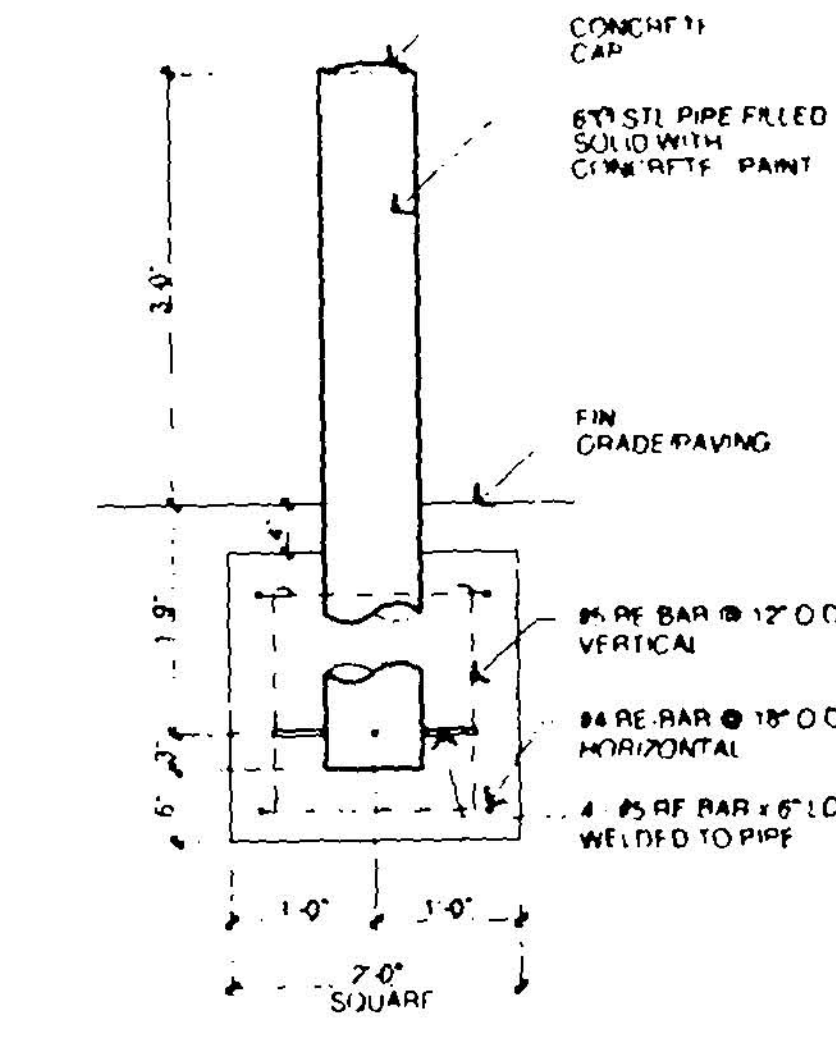
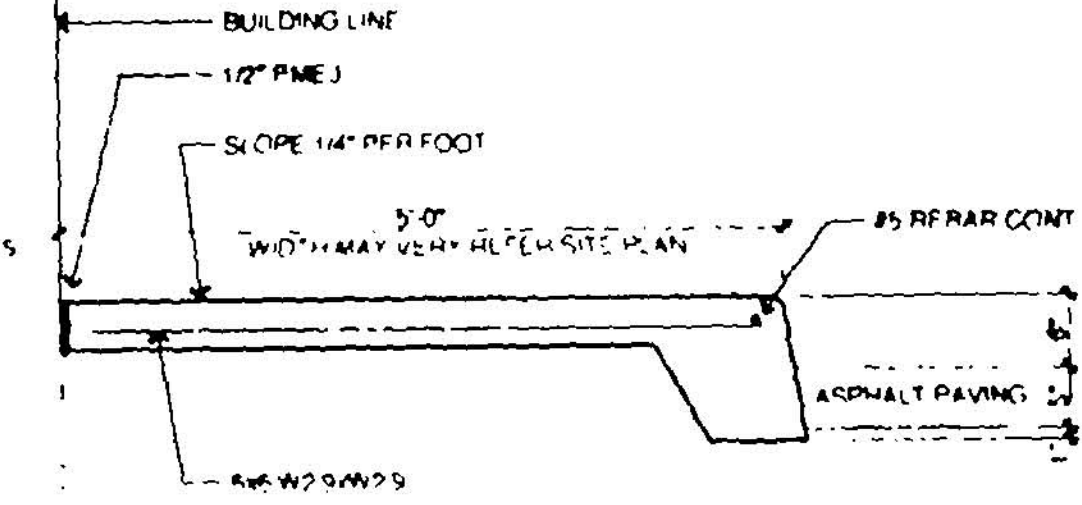
A SITE PLAN
 1" = 20'-0"



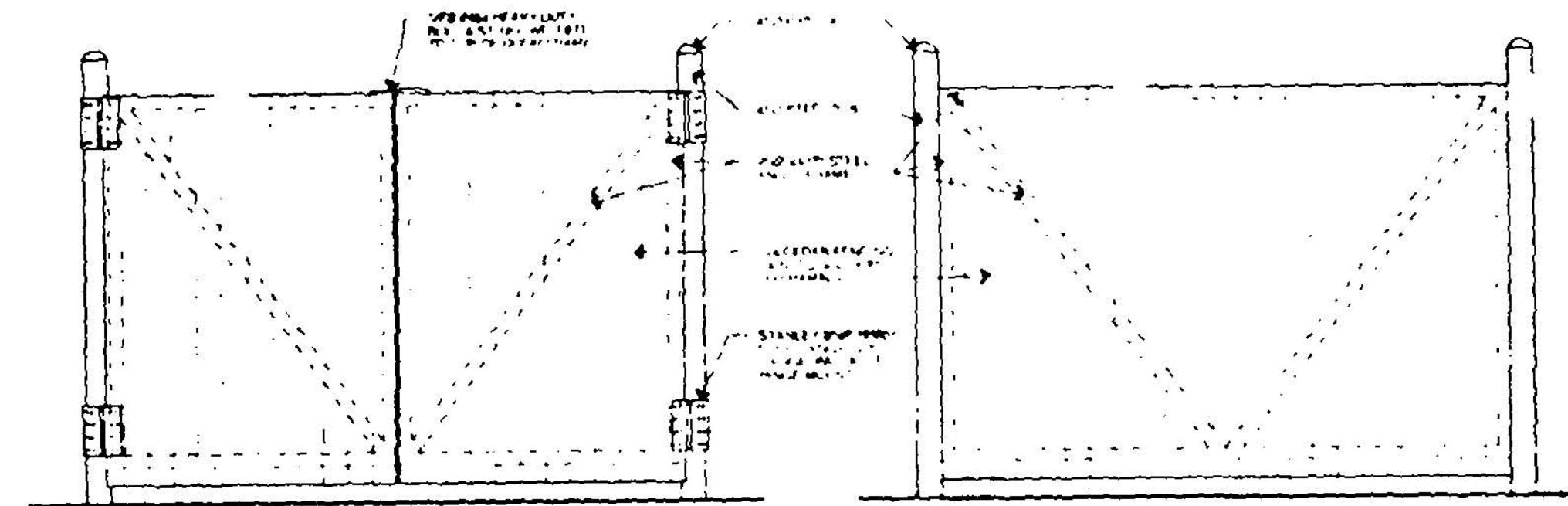
E LIGHT POLE BASE
 3/4" = 1'-0"

- NOTES:
 1. IF WATER IS PRESENT IN HOLE REMOVE BEFORE POURING CONCRETE
 2. FOUNDATION EXCAVATION SHALL BE WITH 2" ALGEBRA IN UNDISTURBED OR COMPACTED FILL PER SPECIFICATIONS

D SIDEWALK DTL.
 3/4" = 1'-0"

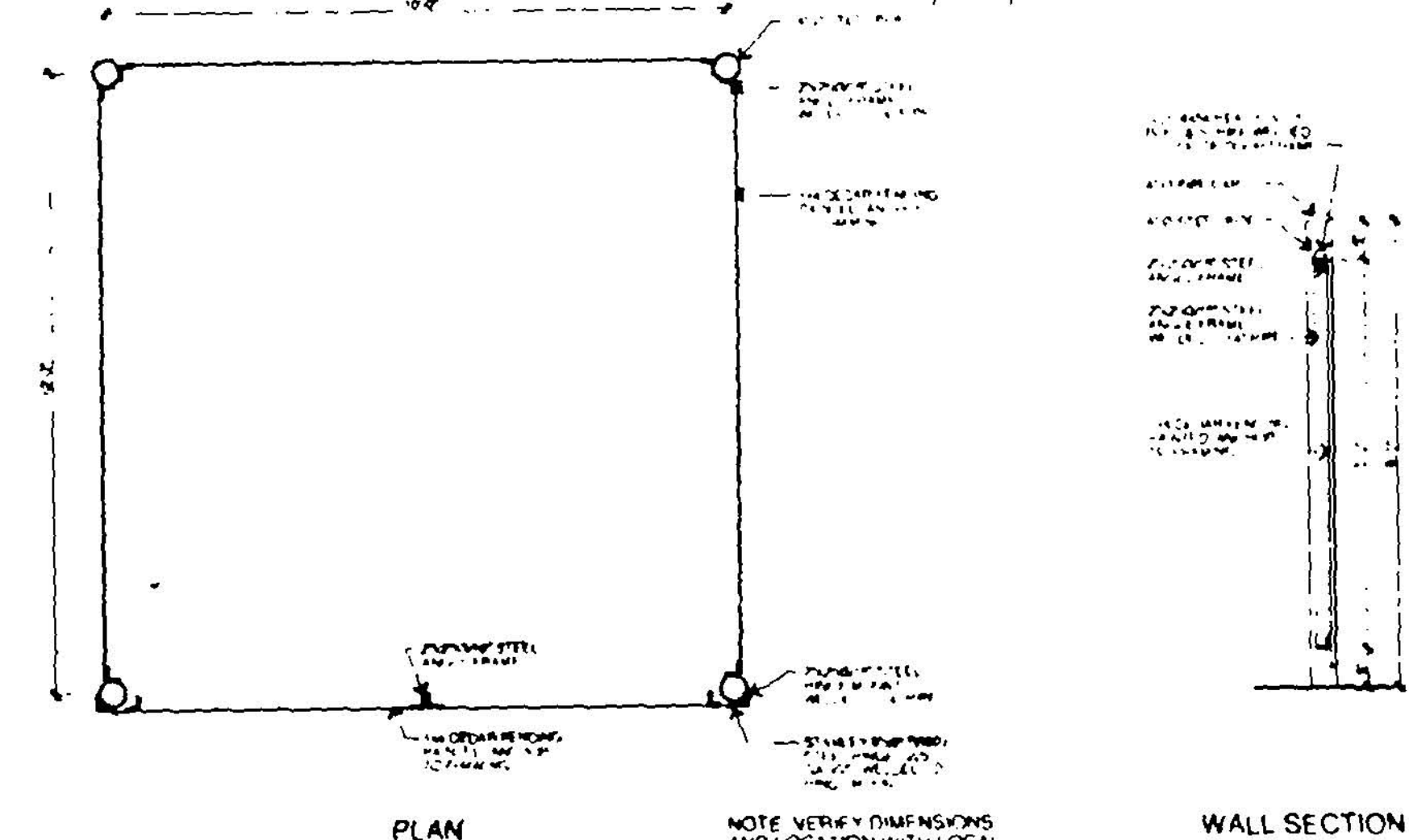


C BOLLARD DTL.
 3/4" = 1'-0"



FRONT ELEVATION

SIDE ELEVATION



PLAN

WALL SECTION

B TRASH ENCLOSURE
 NO SCALE

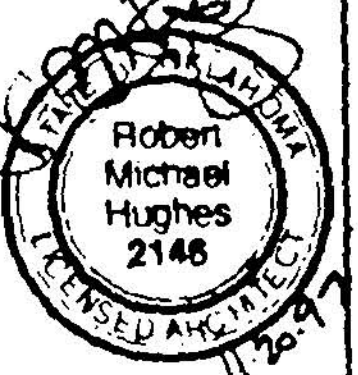
Revised site plan Jan 26, 98
 Change in interior floor plan
 Approved



Mazzio's
 101st & Juniper
 Broken Arrow, OK

MAZZIO'S CORPORATION
 4441 S 79th E AVE
 TULSA, OKLA 74145
 (918) 683-4800

PROFESSIONAL
 STAMPS



SITE PLAN
 MODEL 33x

SHEET INDEX

NO. PROJ. NO.	07003
REV.	DATE:
	28 FEB 97
	18 MAR 97
	28 MAR 97
	4 APR 97
	20 NOV 97



MAZZIO'S CORPORATION
 TULSA, OKLA
 Manager of Construction Projects
 4441 S 79th E AVE, TULSA, OK 74145-4802 • 918-683-4800
 DIRECT LINE 918-683-1371 • FAX 918-683-1708
 PAGE 03 OF 04 ATOM
 MARK 1/26/98 7:20 AM

DRAWING
 DATE 14 FEB 97
 SHEET NO.

SP1