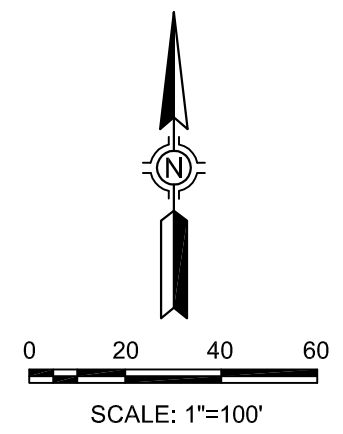
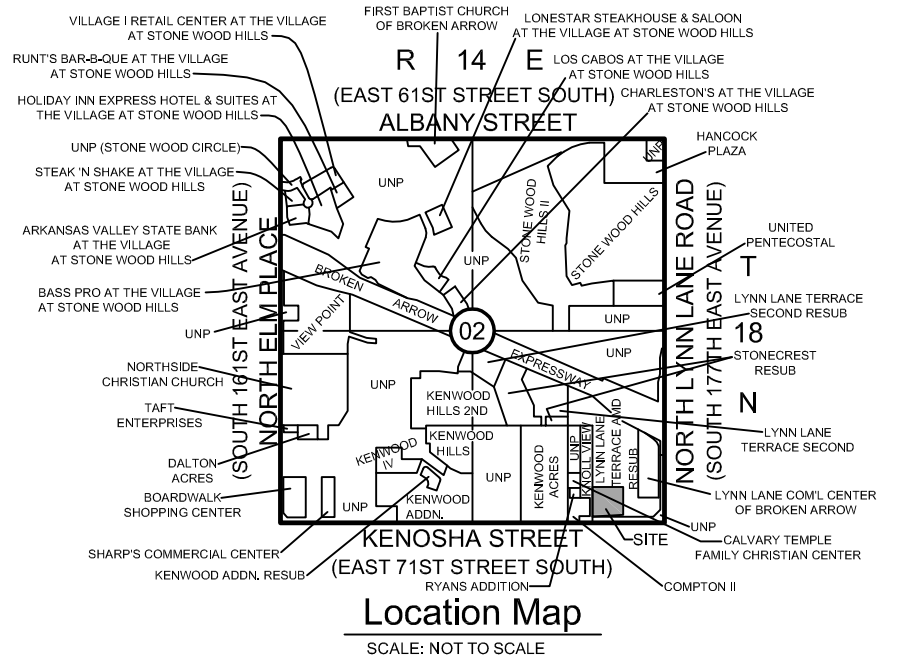
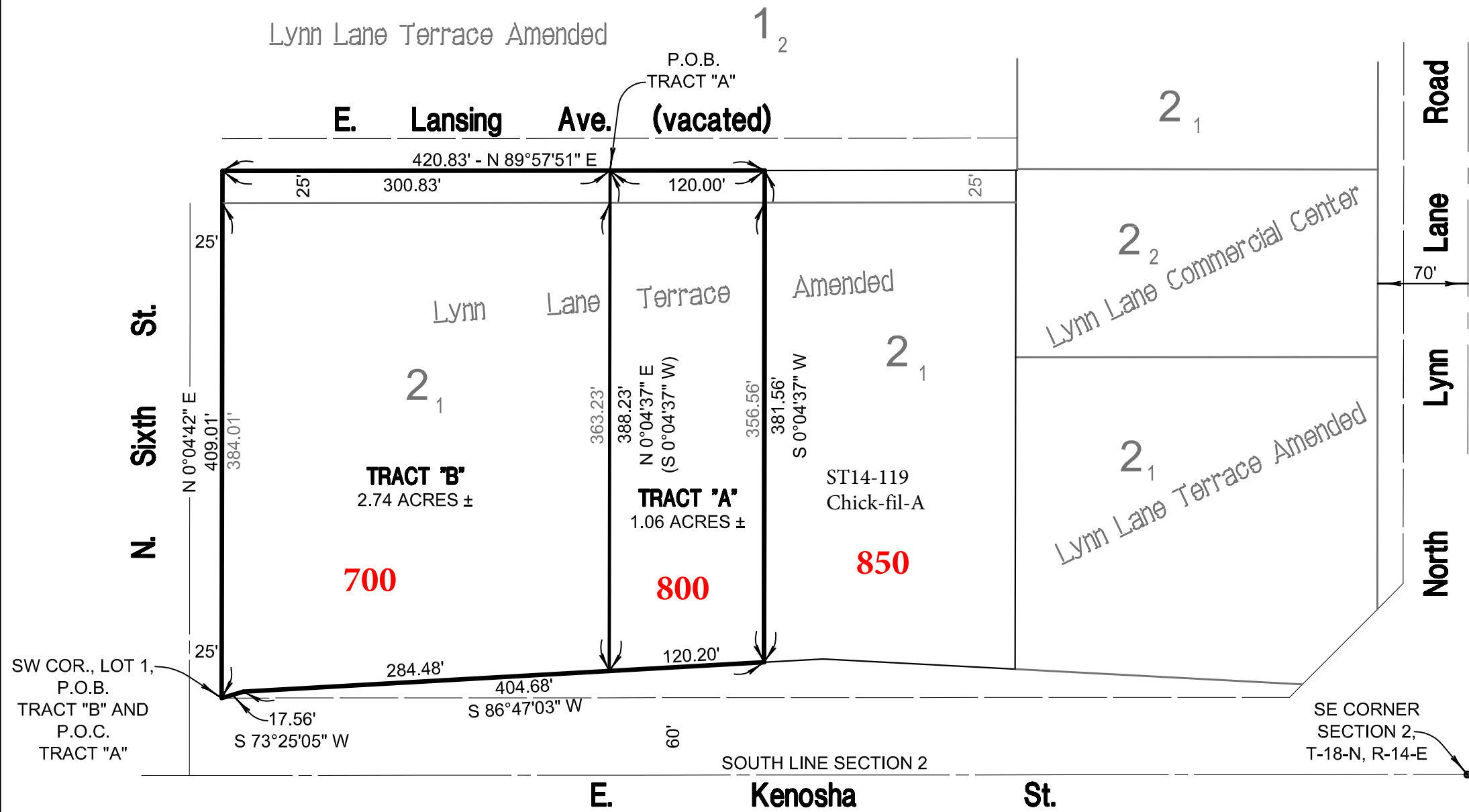


K:\15775-07\EXHIBITS\LOT-SPLIT-EXH.dwg SHEET 1 Feb 16, 2015 - 2:49:39pm SISEMORE WEISZ & ASSOCIATES, INC., 2015



**Lot Split Exhibit
of
Part of Lot One (1), Block Two (2)
Lynn Lane Terrace Amended
City of Broken Arrow, Tulsa County, Oklahoma**

Legend
P.O.B. = POINT OF BEGINNING
P.O.C. = POINT OF COMMENCEMENT

REVISIONS	BY	DATE

	Sisemore Weisz & Associates, Inc.		
	6111 EAST 32nd PLACE TULSA, OKLAHOMA 74135 C.A. NO. 2421	PHONE: (918) 665-3600 FAX: (918) 665-8668 EXP. DATE 6/30/15	
FILE: 1814.0200	SURVEY BY:	DATE: 2/16/15	
ORDER: 15775.07	DRAWN BY: LAD	SCALE: 1"=100'	
BOOK:	CHECKED BY: MK	SHEET 1 OF 1	