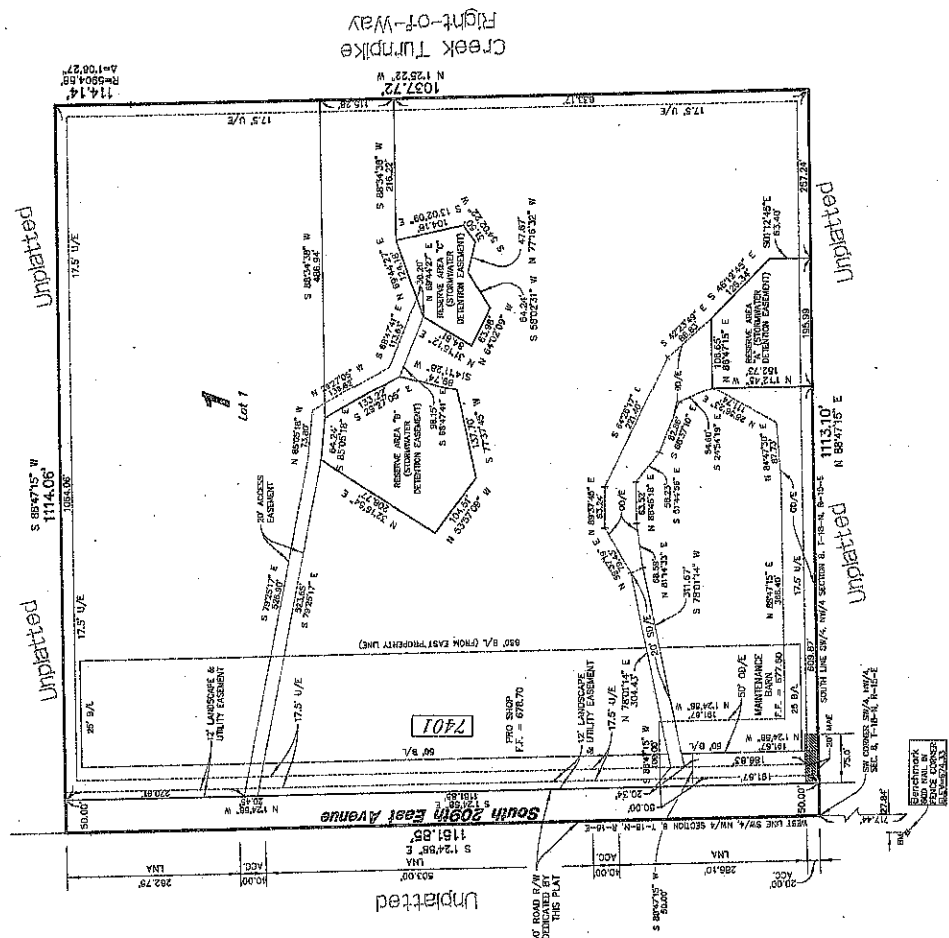
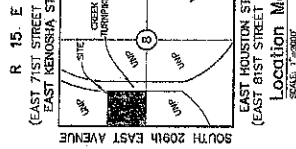


Tee Town Golf Ranch

PART OF THE SW/4 OF SECTION 5, TOWNSHIP 18 NORTH, RANGE 15 EAST,
 OF THE INDIAN BASE & MERIDIAN, A SUBDIVISION IN THE CITY OF BROKEN ARROW, WAGONER COUNTY, OKLAHOMA



Scale: 1"=100'

Benchmark and Datum
 580 NAIL IN FENCE CORNER 777.44 FEET SOUTH
 OF THE INTERSECTION OF THE PROPERTY
 CORNER ELEV: 674.33 (NVD 20)

Basis of Bearings
 BASIS OF BEARINGS IS ASSUMED USING THE
 NEST LINE OF THE N1/4 AS S 01°24'51" E.

Monumentation
 MONUMENTS SET AT ALL PROPERTY CORNERS.

- Legend:**
- B/L = BENCHMARK
 - L/E = LANSFORD EASEMENT
 - S/E = SOUTH STREET EASEMENT
 - D/E = DRIVE AND DRIVEWAY EASEMENT
 - U/A = UNITS OF NO ACCESS
 - P/F = PROPOSED FLOOR ELEVATION
 - = METAL ACCESS EASEMENT
 - [Z] = ZONING STREET ADDRESS

notes:
 ALL LINES SHOWN ON THIS PLAT ARE DRAWN BY THE
 ENGINEERING DEPARTMENT OF THE CITY OF BROKEN ARROW
 AND WERE ACCURATE AT THE TIME THE PLAT WAS FILED.
 THE ENGINEER HAS CONDUCTED A VISUAL INSPECTION
 AND HAS FOUND NO REASON TO BELIEVE THAT THE PLAT
 DOES NOT CORRECTLY SHOW THE LOCATION OF THE
 MONUMENTS SET AT ALL PROPERTY CORNERS.

Owner/Developer:
Tee Town Golf Ranch, Inc.
 An Oklahoma Corporation
 1212 East 167th Street South
 Glenpool, Oklahoma 74033
 Phone: (918) 827-5891

Engineer/Surveyor:
Sisemore Weisz & Associates, Inc.
 Certificate of Authorization No. 2421 Exp. June 30, 2003
 8111 East 32nd Place
 Tulsa, Oklahoma 74135
 Phone: (918) 865-3600

APPROVED: *S. L. O'Z* By the City
 Council of the City of Broken Arrow,
 Oklahoma.
 Mayor: *James C. Reynolds*
 Attest: City Clerk: *Brenda Ray Orr*

STATE OF OKLAHOMA)
 COUNTY OF WAGONER) SS
 I, *S. L. O'Z*, County Clerk, do hereby certify that
 the above plat was duly filed for record in the
 office of the County Clerk of this county on the
 5th day of June, 2002.
 S. L. O'Z
 County Clerk

CERTIFICATE
 I hereby certify that all real estate taxes levied in this plat have
 been paid in full to the satisfaction of the County Clerk of this
 county for the year 2002. The amount of \$2,000.00
 has been received by the County Clerk of this county.
 This certificate is not to be construed as payment of 2002
 taxes on the land shown on this plat. The amount of 2002
 taxes levied on the land shown on this plat is \$2,000.00.
 Paid: *S. L. O'Z* June 5, 2002

Wagoner County Treasurer
By: [Signature]

