

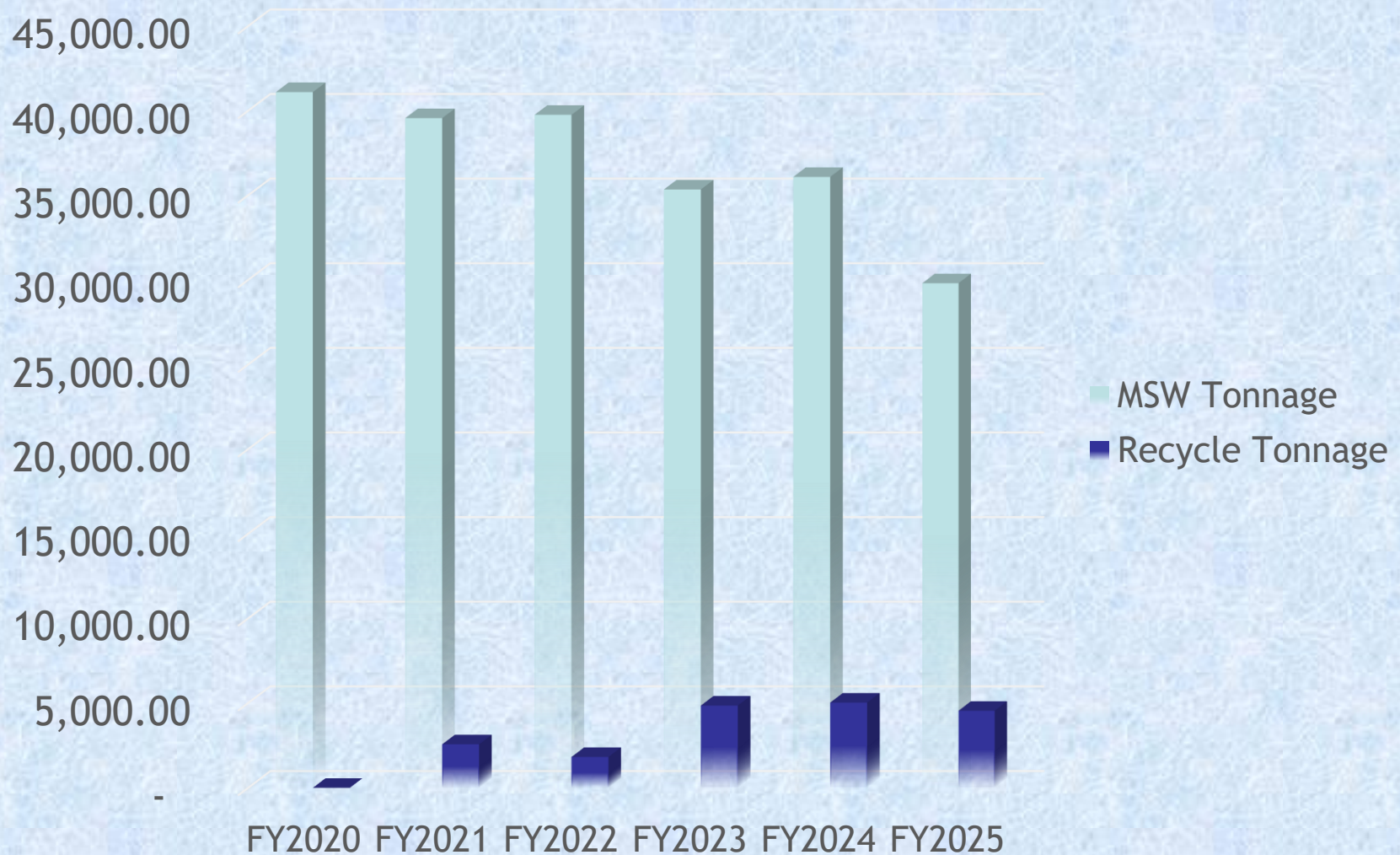
# **SOLID WASTE & RECYCLING**

## **Annual Updates**



# We have only just begun

## FISCAL TONNAGE



# Program Updates

## The new and improved Trash

**Bash** Bash program has been in BA for several years. It was re-engineered in 2021 to include a recycle rally. The purpose was to help our community find a convenient way to recycle the hard to recycle items they had at home.

The Recycle Rally was supported by the municipal authority, our Keep Broken Arrow Beautiful affiliate of Keep Oklahoma Beautiful, the M.e.t., select sponsors, and many volunteers.

This service has become the model for other jurisdictions and won the city several awards for its innovative way of serving our community!





# We *have* made a difference!

## Trash Bash Statistics to

7,864 Lbs. of Car Batteries

7,675 Lbs. of household batteries

11,642 Lbs. of Cardboard

29,435 Lbs. of E-waste

1,290 Lbs. of RX

760 Lbs. of Plastic Bags

768 Lbs. of Sharps

38,430 Lbs. of Paper Shredding

1,460 Tires

146 Lbs. of Fire Extinguishers

The volunteer groups have cleaned over 60 miles with 611 people. Their efforts have netted 563 bags of trash and 141 bags of recyclables!



# Service changes so far...

The department had challenges.

Routes were finishing late in the evening or not completing the days task

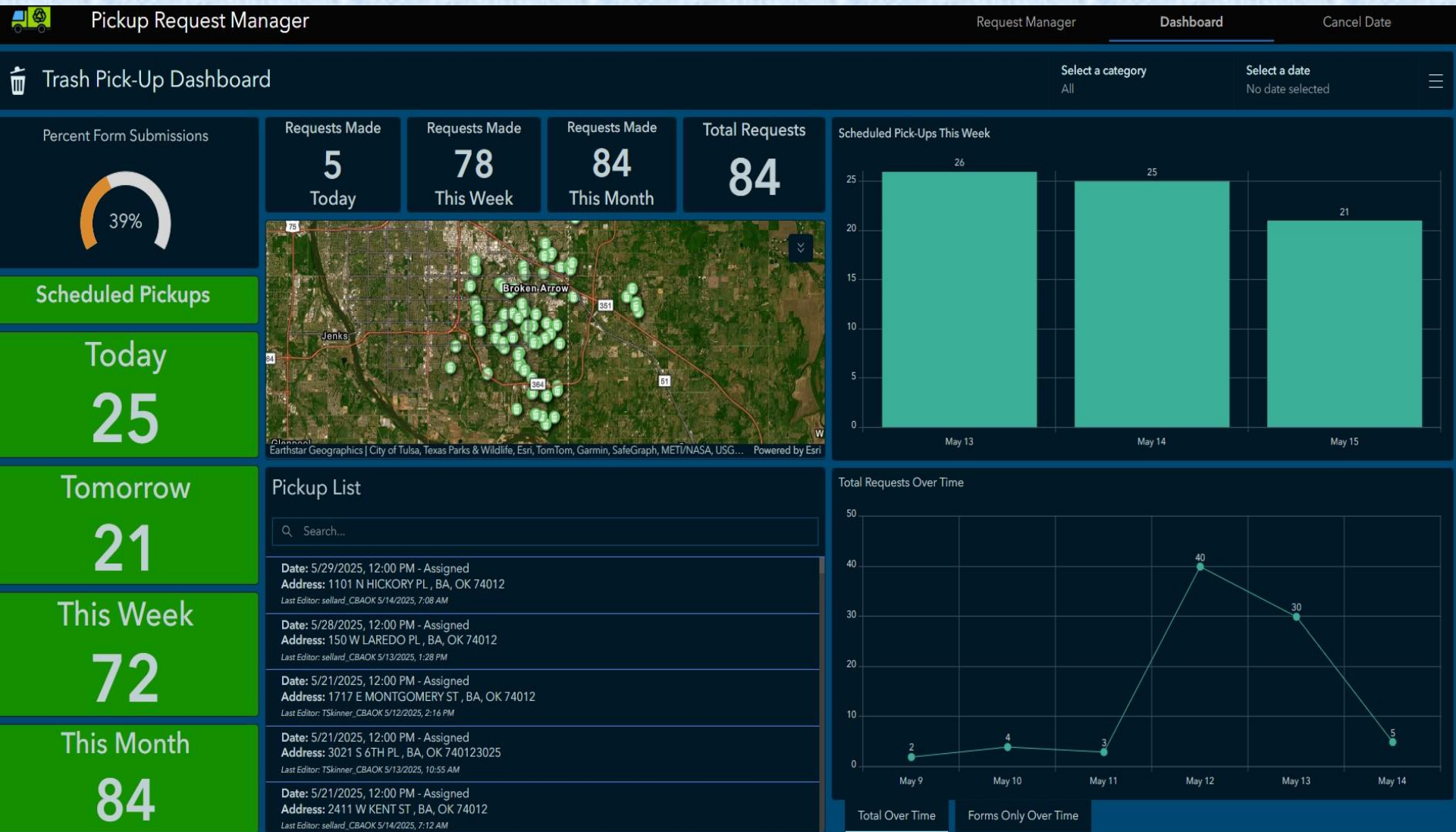
The recycling center we used for processing suffered a fire and was closed to us for a year

The equipment was showing signs of fatigue and was antiquated for the services needed for a city of 120,000+ people.

The department positions were not at full capacity, which meant the long days were taking their toll on the staff.



# Our newest Addition to the SW&R Family!





# The marathon not the sprint

Route Completion Times  
improved

Recycling was reopened

Vehicles were being replaced

Adjustments to personnel were  
being made

Program enhancements like  
landfill vouchers

Rates were adjusted

# The race continues

Next steps for continual route Times improvement (Overtime)

Continual improvements

Cost impacts

Recycling contamination is on the rise

All 23 ASL Vehicles are here



# **Thank you**

**I am here to answer any questions you may have.**