

Final Plat - PUD #147

5917 Bristol Ponds

AN ADDITION TO THE CITY OF BROKEN ARROW, TULSA COUNTY, STATE OF OKLAHOMA; BEING A PART OF THE SE/4 OF SECTION 15, T-18-N, R-14-E, OF THE INDIAN BASE AND MERIDIAN; A RESUBDIVISION OF PART OF 'METROLAND COMMERCIAL CENTER', AN ADDITION TO THE CITY OF BROKEN ARROW, TULSA COUNTY, STATE OF OKLAHOMA (PLAT #4955) AND PART OF 'VILLAGE PARK', AN ADDITION TO THE CITY OF BROKEN ARROW, TULSA COUNTY, STATE OF OKLAHOMA (PLAT #5152)

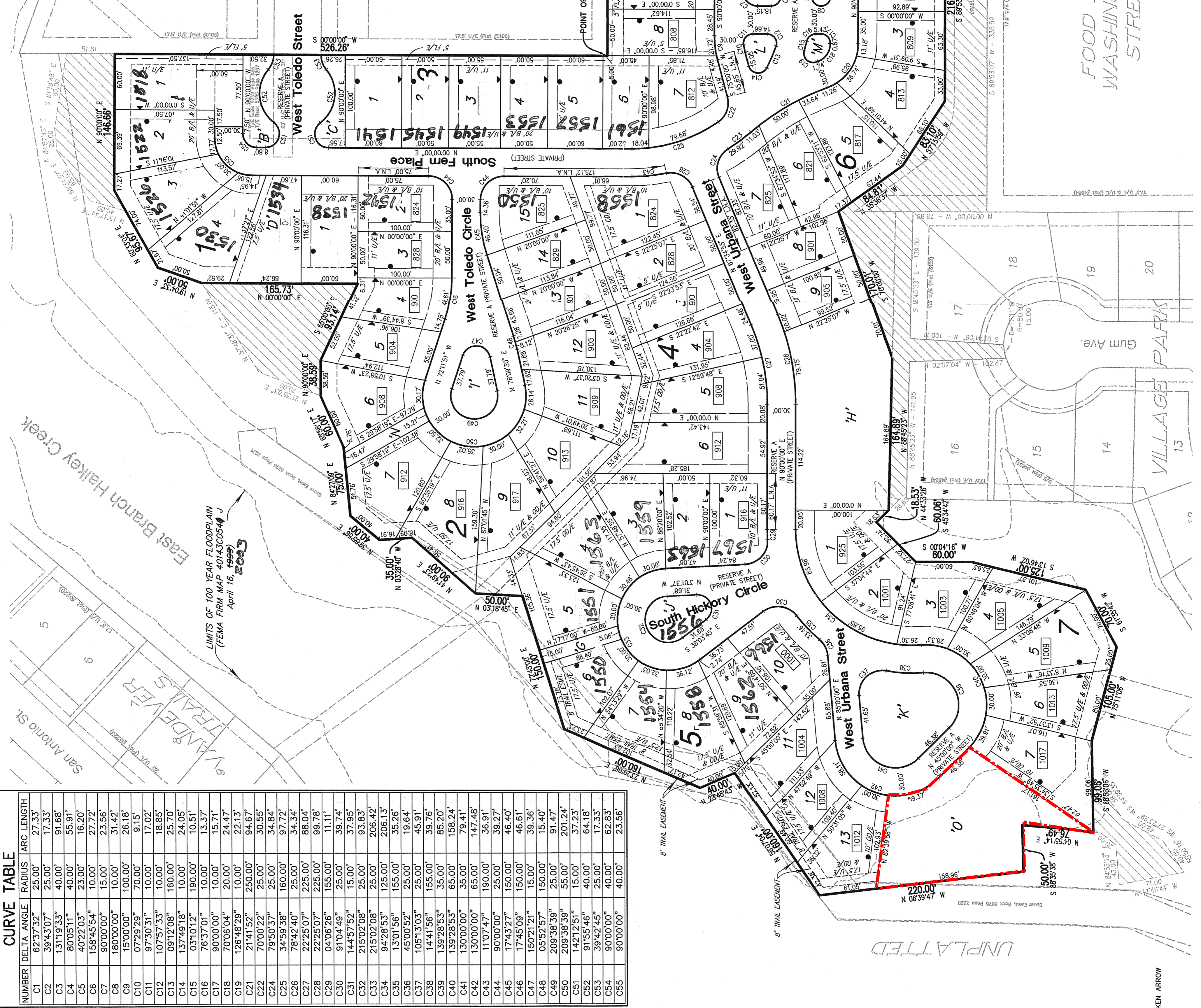
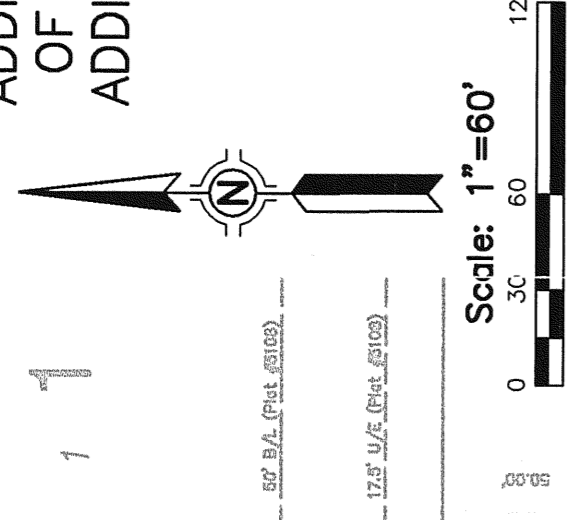
Owner/Developer
 BREEZE PETROLEUM, LLC
 7170 S. BRADEN AVE. #200
 TULSA, OK 74136
 PHONE: (918) 492-5090

Engineer/Surveyor
 HALL, ROSENBAUM, ALMON & ASSOCIATES, INC
 1913 WEST TACOMA, SUITE-C
 BROKEN ARROW, OKLAHOMA 74012-1472
 PHONE: (918) 258-3737
 FAX: (918) 258-2554
 C.A.#3643 EXPIRES JUNE 30, 2007

Basis of Bearing
 PLATTED BEARING OF S 0°00'00" W
 ALONG THE WEST LINE OF "VANDEVER PLAZA II" AND ADDITION TO THE CITY OF BROKEN ARROW, TULSA COUNTY, STATE OF OKLAHOMA (PLAT NO. 5108)

Notes
 ADDRESSES SHOWN ON THIS PLAT WERE ACCURATE AT THE TIME THIS PLAT WAS FILED. ADDRESSES ARE SUBJECT TO CHANGE AND SHOULD NEVER BE RELIED ON IN PLACE OF LEGAL DESCRIPTION.
 ALL PRIVATE STREETS SHOWN HEREON ARE DEDICATED AS RESERVE A BY THIS PLAT.
 ALL WATER AND SANITARY SEWER SERVICES WILL BE SUPPLIED AND MAINTAINED BY THE CITY OF BROKEN ARROW.

Monumentation
 ALL CORNERS SHOWN HEREON WERE SET USING A #3 X 18" REBAR PIN WITH A PLASTIC CAP STAMPED "PLS 1283". UNLESS OTHERWISE NOTED.



CURVE TABLE

NUMBER	DELTA ANGLE	RADIUS	ARC LENGTH
C1	62.5732°	25.00'	27.33'
C2	39.4307°	25.00'	17.33'
C3	131.1933°	40.00'	91.68'
C4	80.0511°	40.00'	55.91'
C5	40.2203°	10.00'	16.20'
C6	158.4554°	10.00'	27.72'
C7	90.0000°	15.00'	23.56'
C8	180.0000°	10.00'	31.42'
C9	15.0000°	100.00'	26.18'
C10	97.3031°	70.00'	9.15'
C11	107.5733°	10.00'	17.02'
C12	89.1208°	10.00'	18.85'
C13	137.4918°	10.00'	24.05'
C14	3.1012°	10.00'	10.51'
C15	76.3701°	10.00'	13.37'
C16	90.0000°	10.00'	15.71'
C17	70.0604°	20.00'	24.47'
C18	126.9829°	10.00'	23.13'
C19	21.4152°	250.00'	94.67'
C20	70.0022°	25.00'	30.55'
C21	79.5037°	25.00'	34.84'
C22	34.5938°	160.00'	97.72'
C23	78.4240°	25.00'	34.34'
C24	22.2507°	225.00'	88.04'
C25	22.2507°	225.00'	88.04'
C26	94.0626°	155.00'	11.11'
C27	91.0449°	25.00'	39.74'
C28	144.5752°	15.00'	37.95'
C29	215.0208°	25.00'	93.83'
C30	215.0208°	25.00'	206.42'
C31	94.2853°	125.00'	206.13'
C32	13.0156°	155.00'	35.26'
C33	45.0052°	25.00'	19.64'
C34	105.1303°	25.00'	49.91'
C35	14.4156°	155.00'	39.76'
C36	139.2853°	35.00'	85.20'
C37	139.2853°	35.00'	158.24'
C38	130.0000°	65.00'	158.24'
C39	130.0000°	65.00'	158.24'
C40	130.0000°	65.00'	158.24'
C41	130.0000°	65.00'	158.24'
C42	130.0000°	65.00'	158.24'
C43	130.0000°	65.00'	158.24'
C44	90.0000°	25.00'	39.27'
C45	174.3727°	150.00'	46.40'
C46	17.4509°	150.00'	46.61'
C47	15.0121°	15.00'	39.36'
C48	05.5257°	150.00'	15.40'
C49	209.3839°	55.00'	201.24'
C50	142.1251°	15.00'	37.23'
C51	91.5546°	40.00'	64.18'
C52	39.4245°	25.00'	17.33'
C53	90.0000°	40.00'	62.83'
C54	90.0000°	40.00'	23.56'
C55	90.0000°	40.00'	23.56'

BACKFLOW PREVENTER VALVE TABLE

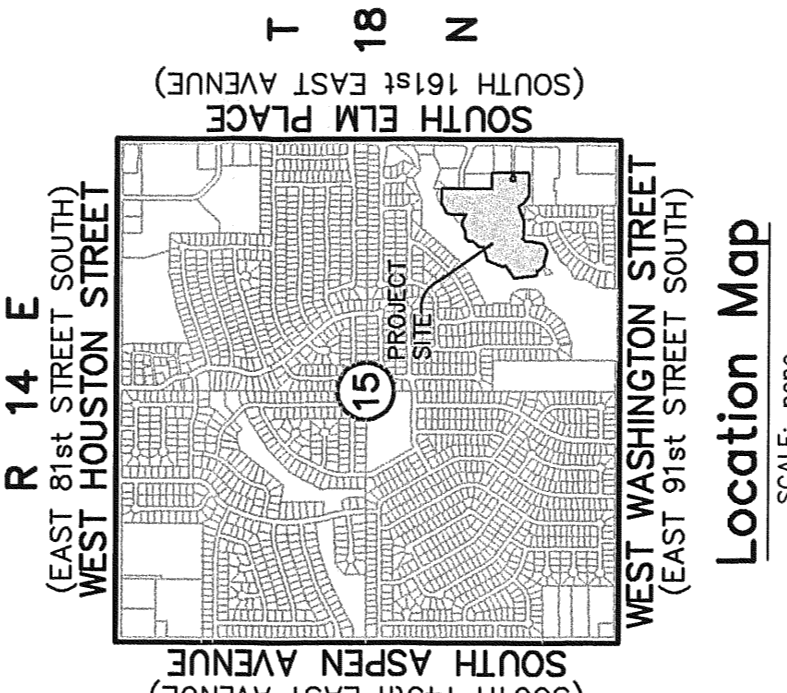
BLOCK	LOTS	FINISH FLOOR ELEVATION	TOP OF MANHOLE ELEVATION	
1	1	706.50	28	704.50
1	2	706.50	28	704.50
1	3	706.50	28	704.50
1	4	706.50	f	704.10
2	1	706.50	f	704.46
2	2	706.50	f	704.46
2	3	706.50	f	704.46
2	4	706.50	26	704.57
2	5	706.50	26	704.57
2	6	706.50	24	704.80
2	7	706.50	15	701.06
2	8	706.50	15	701.06
2	9	706.50	17	703.68
2	10	706.50	17	703.68
2	11	706.50	19	702.78
2	12	706.50	19	702.78
2	13	706.50	19	702.78
2	14	706.50	19	702.78
2	15	706.50	29	709.49
3	1	709.50*	29	709.49
3	2	709.50*	29	709.49
3	3	709.50*	29	709.49
3	4	707.50*	6	709.00
3	5	706.50*	6	709.00
3	6	706.50	d	705.00
3	7	706.50	d	705.00
3	8	706.00*	22	705.19
3	9	706.00*	21	709.52
3	10	706.00*	21	709.52
4	1	703.50*	19	702.78
4	2	704.80	19	702.78
4	3	704.80	19	702.78
4	4	704.80	19	702.78
4	5	704.50*	18	703.76
4	6	704.50*	18	703.76
5	1	704.00*	6	703.25
5	2	704.00*	6	703.25
5	3	702.00*	16	703.56
5	4	702.00*	16	703.56
5	5	701.50*	16	703.56
5	6	701.50*	EXST.	697.36
5	7	701.50*	EXST.	698.82
5	8	701.50*	13	701.59
5	9	702.50*	13	701.59
5	10	703.60	13	701.59
5	11	701.50	EXST.	698.67
5	12	701.50	EXST.	698.67
5	13	701.50	EXST.	698.67
6	1	706.00*	EXST.	705.73
6	2	706.00*	EXST.	705.73
6	3	706.00*	EXST.	705.73
6	4	706.00*	EXST.	704.84
6	5	705.50	11	703.08
6	6	704.50	11	703.08
6	7	703.50*	b	703.00
6	8	704.50	b	703.00
6	9	704.50	b	703.00
6	10	704.50	b	703.00
7	1	703.50	9	699.95
7	2	703.50	9	699.95
7	3	702.50	7	695.29
7	4	701.50	7	695.29
7	5	701.50	5	696.97
7	6	701.50	5	696.97
7	7	701.50	4	696.93

* REQUIRES BACKFLOW PREVENTER VALVE.
 IF THE ACTUAL FINISH FLOOR ELEVATION IS LOWER THAN ONE (1) FOOT ABOVE THE TOP OF RIM ELEVATION OF THE UPSTREAM MANHOLE, IT SHALL BE THE BUILDER'S RESPONSIBILITY TO INSTALL A BACKFLOW PREVENTER VALVE IN ACCORDANCE WITH PERMITS AND CITY OF BROKEN ARROW ORDINANCE NO. 1777, SECTION 24-100, ADOPTED MAY 17, 1993.

STORMWATER DETENTION ACCOMMODATIONS FOR THIS SITE ARE PROVIDED BY THE INSTANT DETENTION FACILITY AS SHOWN IN THE "NO EXCEPTIONS TAKEN" ENGINEERING PLANS IN ACCORDANCE WITH PERMITS AND CITY OF BROKEN ARROW ORDINANCE NO. 1777, SECTION 24-100, ADOPTED MAY 17, 1993.

Legend

- B/L BUILDING LINE
- U/E UTILITY EASEMENT
- T/E TURNAROUND EASEMENT
- F/E FENCE & LANDSCAPE EASEMENT
- M/AE MUTUAL ACCESS EASEMENT
- O/E OVERLAND DRAINAGE EASEMENT
- R/W RIGHT OF WAY
- L/VA LIMITS OF NO ACCESS
- POB POINT OF BEGINNING
- TRAFIC CONTROL MEDIAN
- [1234] STREET ADDRESS
- [---] AREA DEDICATED TO CITY OF BROKEN ARROW
- [---] 10' BUILDING SETBACK LINE
- [---] MANDATORY BUILDING LINE



APPROVED *[Signature]* by the City Council of the City of Broken Arrow, Oklahoma.
 Mayor: *[Signature]*
 Attest: City Clerk *[Signature]*

Dated this 11th day of Nov, 2005
 EARLENE WILSON, Tulsa County Clerk
 Deputy: *[Signature]*

CERTIFICATE
 I hereby certify that all real estate taxes involved in this plat have been paid as reflected by the current tax rolls. Security as required has been provided in the amount of \$ 8,557.00 per trust receipt no. 2005131022 to be applied to 2005 taxes. This certificate is NOT to be construed as payment of 2005 taxes in full but only in order that this plat may be filed on record. No fees may exceed the amount of the security provided.