

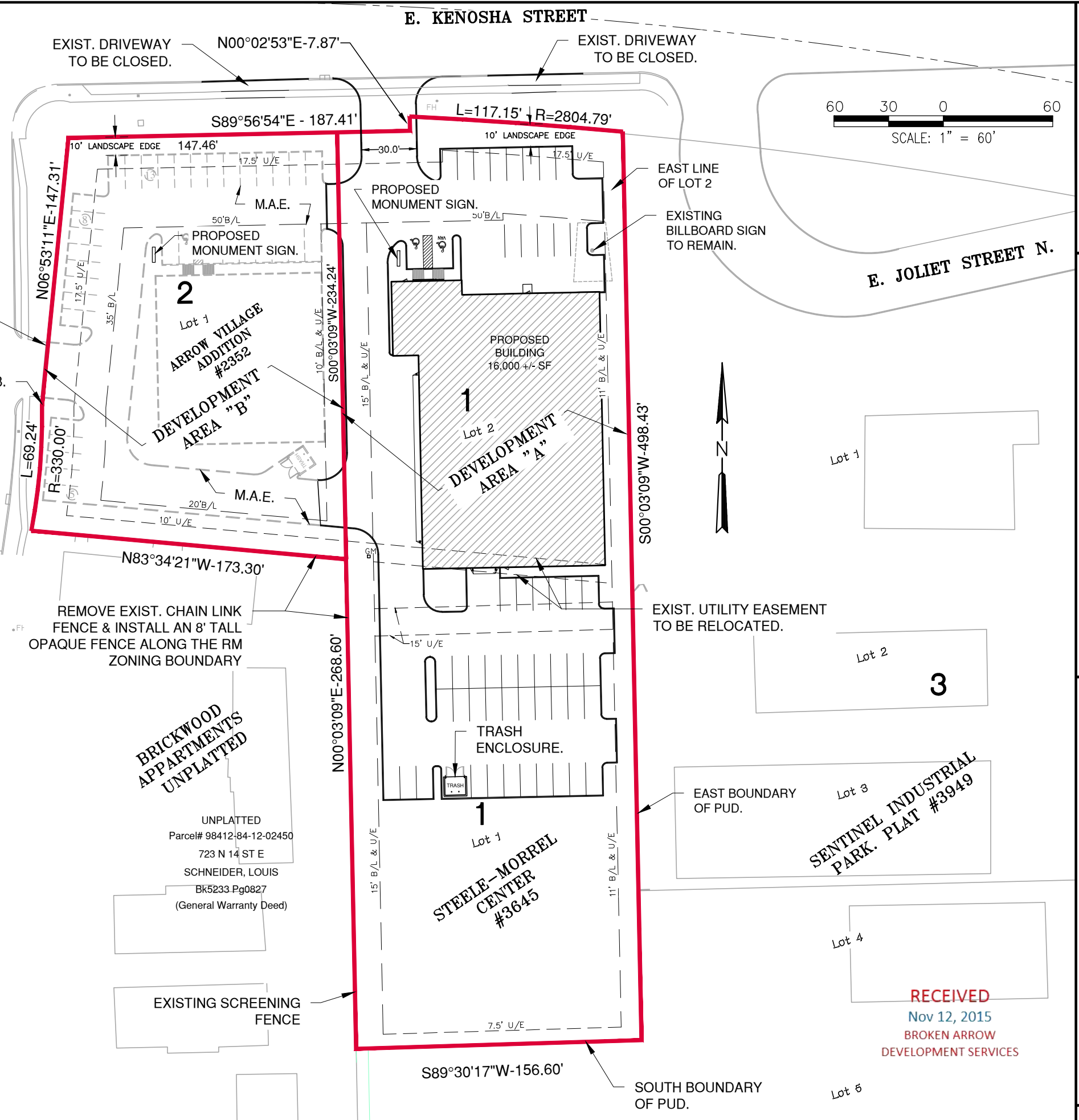


PUD LEGAL DESCRIPTION:

A TRACT OF LAND THAT IS "STEELE-MORREL CENTER", AN ADDITION TO THE CITY OF BROKEN ARROW, FILED AS PLAT #3645, AND A PART OF BLOCK TWO (2) OF "BLOCKS 1,2,&3 ARROW VILLAGE ADDITION", AN ADDITION TO THE CITY OF BROKEN ARROW, FILED AS PLAT #2352, AND A PART OF THE NORTHEAST QUARTER OF THE NORTHWEST QUARTER (NE/4 NW/4) OF SECTION TWELVE (12), TOWNSHIP EIGHTEEN (18) NORTH, RANGE FOURTEEN (14) EAST OF THE INDIAN MERIDIAN, TULSA COUNTY, STATE OF OKLAHOMA. SAID TRACT OF LAND BEING MORE PARTICULARLY DESCRIBED AS FOLLOWS:

BEGINNING AT A POINT ON THE WEST LINE OF LOT ONE (1), BLOCK (2), OF "BLOCKS 1, 2, &3 ARROW VILLAGE ADDITION" THAT IS S00°03'09"W A DISTANCE OF 161.26 FEET FROM THE NORTHWEST CORNER OF SAID LOT ONE (1), BLOCK (2); THENCE ALONG THE OKLAHOMA DEPARTMENT OF TRANSPORTATION RIGHT OF WAY, N06°53'11"E A DISTANCE OF 147.31 FEET; THENCE CONTINUING ALONG SAID RIGHT OF WAY, S89°56'54"E A DISTANCE OF 187.41 FEET; THENCE CONTINUING ALONG SAID RIGHT OF WAY, N00°02'53"E A DISTANCE OF 7.87 FEET TO A POINT ON THE NORTH LINE OF BLOCK ONE (1) OF "STEELE-MORREL CENTER"; THENCE WITH A CURVE TO THE RIGHT HAVING A RADIUS OF 2804.79 FEET, AN ARC LENGTH OF 117.15 FEET, A CENTRAL ANGLE OF 02°23'35", A CHORD BEARING OF S84°39'54"E, AND A CHORD LENGTH OF 117.14 FEET TO THE NORTHWEST CORNER OF LOT ONE (1), BLOCK THREE (3) OF "SENTINEL INDUSTRIAL PARK", AN ADDITION TO THE CITY OF BROKEN ARROW, FILED AS PLAT #3949; THENCE ALONG SAID BLOCK THREE (3) OF "SENTINEL INDUSTRIAL PARK", S00°03'09"W A DISTANCE OF 498.43 FEET TO THE SOUTHWEST CORNER OF LOT FOUR (4), BLOCK THREE (3) OF "SENTINEL INDUSTRIAL PARK"; THENCE ALONG THE NORTHERLY LINE OF LOT FIVE (5), BLOCK THREE (3) AND CONTINUING ALONG THE SOUTHERLY LINE OF BLOCK ONE (1) OF "STEELE-MORREL CENTER", S89°30'17"W A DISTANCE OF 156.60 FEET TO THE SOUTHWEST CORNER OF LOT ONE (1), BLOCK ONE (1), "STEELE-MORREL CENTER"; THENCE ALONG THE WESTERLY LINE OF LOT ONE (1), BLOCK ONE (1), "STEELE-MORREL CENTER", N00°03'09"E A DISTANCE OF 268.60 FEET TO A POINT ON THE SOUTHERLY LINE OF LOT ONE (1), BLOCK TWO (2) OF "BLOCKS 1,2,&3 ARROW VILLAGE ADDITION"; THENCE N83°34'21"W A DISTANCE OF 173.30 FEET TO THE SOUTHWEST CORNER OF LOT ONE (1), BLOCK TWO (2) OF "BLOCKS 1,2,&3 ARROW VILLAGE ADDITION"; THENCE WITH A CURVE TO THE LEFT HAVING A RADIUS OF 330.00 FEET, AN ARC LENGTH OF 69.24 FEET, A CENTRAL ANGLE OF 12°01'19", A CHORD BEARING OF N06°03'49"E, AND A CHORD LENGTH OF 69.11 FEET TO THE POINT OF BEGINNING, HAVING AN AREA OF 114973 SQUARE FEET OR 2.6394 ACRES.

BEARINGS BASED ON THE PLATTED LINES OF "BLOCKS 1, 2, &3 ARROW VILLAGE ADDITION", AN ADDITION TO THE CITY OF BROKEN ARROW, FILED AS PLAT #2352.



BRICKWOOD APARTMENTS UNPLATTED

UNPLATTED
Parcel# 98412-84-12-02450
723 N 14 ST E
SCHNEIDER, LOUIS
Bk5233 Pg0827
(General Warranty Deed)

STEELE-MORREL CENTER #3645

SENTINEL INDUSTRIAL PARK. PLAT #3949

RECEIVED
Nov 12, 2015
BROKEN ARROW
DEVELOPMENT SERVICES