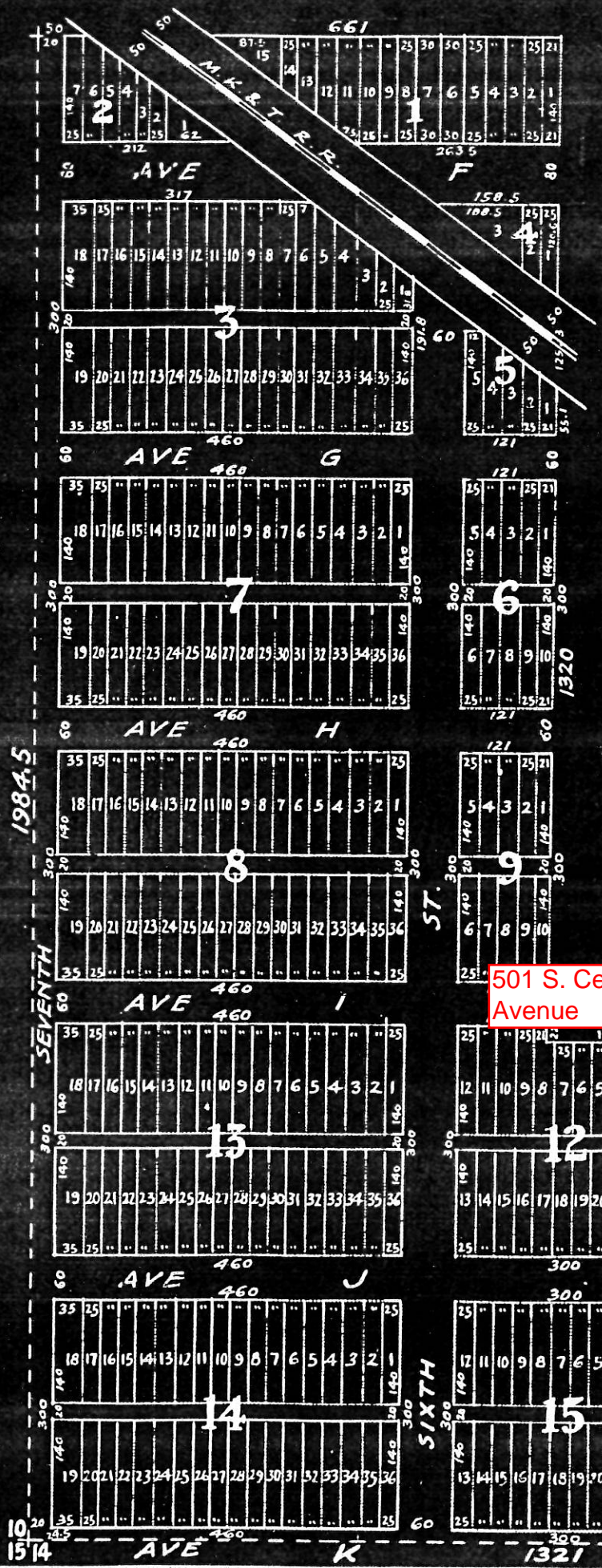
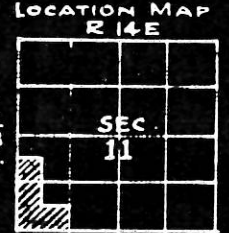


HOMESTEAD ADDITION TO BROKEN ARROW, OKLA.

SE 1/4 SW 1/4 SW 1/4 }
SW 1/4 NW 1/4 SW 1/4 } SEC. 11-18-14
W 1/2 SW 1/4 SW 1/4 }

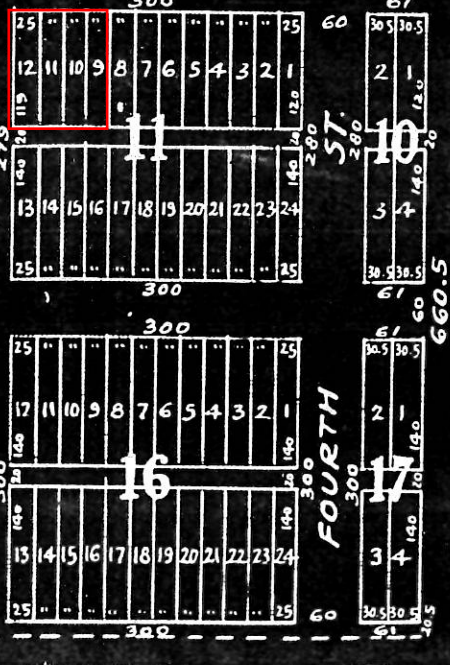


PLAT NOT FILED IN TULSA COUNTY

PHONE — PLAT BOOK, CITY OF TULSA & VICINITY
6-2557 COPYRIGHT 1924, BY A. T. THORNE

501 S. Cedar
Avenue

660



19845
SEVENTH

ST.

SIXTH

FIFTH

FOURTH

10
15 14

1321

660.5