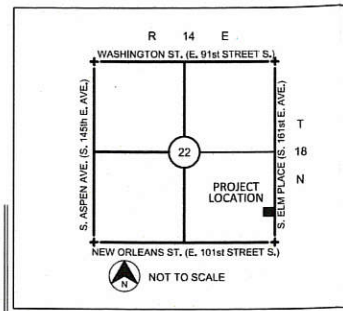
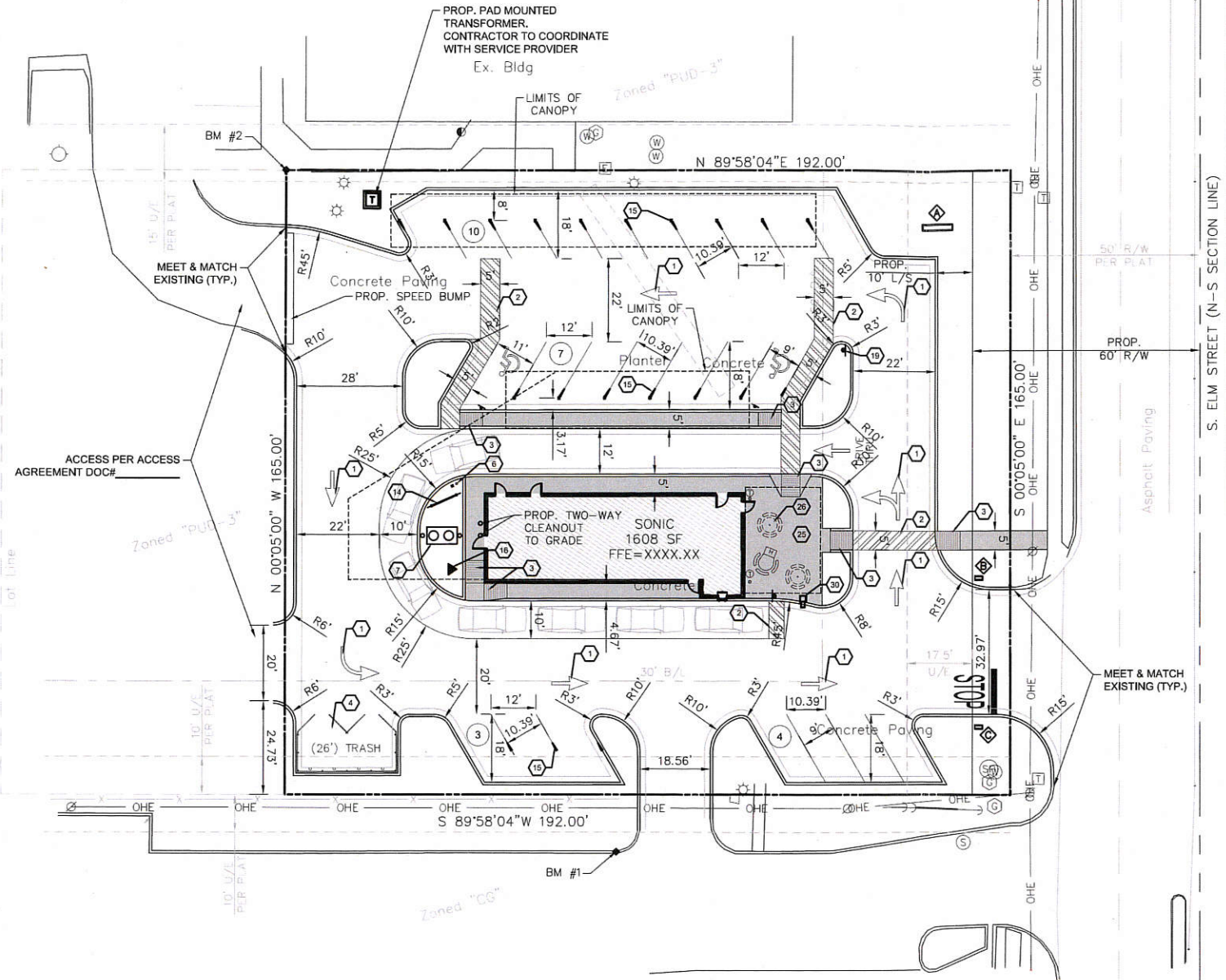
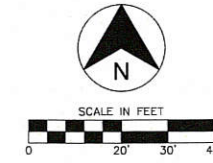


NOTE: ONSITE AREA DISTURBED APPROXIMATELY .73 ACRES (31,679.99 S.F.)

NOTE: REFER TO ARCHITECTURAL PLANS FOR COORDINATION OF BUILDING, APPURTENANCES, DIMENSIONS, AND UTILITY ENTRANCE LOCATIONS.



VICINITY MAP



GENERAL NOTES:

- 1. ALL DIMENSIONS AT CURBS ARE TO FACE OF CURB UNLESS OTHERWISE NOTED.
2. PROPOSED UTILITIES ARE SHOWN IN SCHEMATIC ONLY. EXACT LOCATIONS SHALL BE DETERMINED TO ALLOW FOR THE MOST ECONOMICAL AND PRACTICAL INSTALLATION.
3. THE CONTRACTOR SHALL COORDINATE WITH ALL UTILITY COMPANIES TO DETERMINE EXACT POINT OF SERVICE CONNECTION AT EXISTING UTILITY. REFER TO THE BUILDING ELECTRICAL AND PLUMBING DRAWINGS FOR UTILITY SERVICE ENTRANCE LOCATIONS, SIZES AND CIRCUITING.
4. LOCATIONS OF Pylon / MONUMENT SIGNS AND ENTER / EXIT SIGNS ARE NOT EXACT. THE CONTRACTOR SHALL VERIFY EXACT LOCATIONS WITH OWNER / CONSTRUCTION MANAGER.
5. ALL LANDSCAPE AREAS SHALL BE ROUGH GRADED TO 6" BELOW TOP OF ALL WALKS AND CURBS. TOP SOIL TO BE ADDED TO THE LEVEL OF THE WALKS OR CURBS.
6. THE CONTRACTOR SHALL NOT DISTURB ANY ADJACENT PROPERTIES.

SITE PLAN KEYNOTES

Table with 2 columns: ITEM, NOTE. Lists 30 keynotes for site plan elements like traffic flow arrows, painted stripes, curbs, trash enclosures, railings, bollards, grease traps, sewer lines, gas lines, water lines, electric lines, telephone lines, irrigation systems, order boards, menu/canopy posts, gas meters, concrete paving, thick concrete paving, carhop crossing signage, pick up order here signage, flood lights, conc. curb & gutter, conc. walks and patio, loose tables & chairs, yard hydrant, flower pots, and trash cans.

SIGN SCHEDULE

Table with 5 columns: ITEM, QTY., REFERENCE, SIGN TYPE. Lists signs for monument, enter, exit, sign on building, handicapped parking, and van accessible handicapped sign.

LEGEND

- FIRE HYDRANT, WATER VALVE, EX. WATER METER PIT, EX. WATER METER, PROP. WATER METER, EX. ELECTRICAL PED., EX. ELECT. TRANSFORMER, EX. ELECT. METER, PROP. TRANSFORMER, EX. SIGNAGE, EX. LIGHT POLE, PROP. LIGHT POLE, EX. POWER POLE, PROP. POWER POLE, EX. TELEPHONE PED., EX. SS MANHOLE, PROP. SS MANHOLE, EX. GAS METER, PROP. GAS METER, EX. ELECT. MANHOLE, EX. STORM MANHOLE, VERTICAL SEPARATION REQUIREMENT

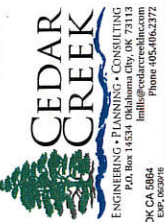
LEGAL DESCRIPTION

Benchmark #1: Northing=49819.906, Easting=50087.812, Elevation=731.533
Benchmark #2: Northing=50000.000, Easting=50000.000, Elevation=728.955

Submitted to Planning Commission during July 14, 2016 meeting by Andrew Shank



REVISIONS table with columns for NO, DATE, and description.



SONIC CORPORATION
300 JOHNNY BENCH DRIVE
OKLAHOMA CITY, OK 73104
OFFICES: 405-225-5000



SONIC DRIVE-IN
SONIC TYPE: 12X
3208 S. ELM PLACE
BROKEN ARROW, OK

SITE PLAN
SHEET C2.0
DWG: 16029
DATE: 05.16.16